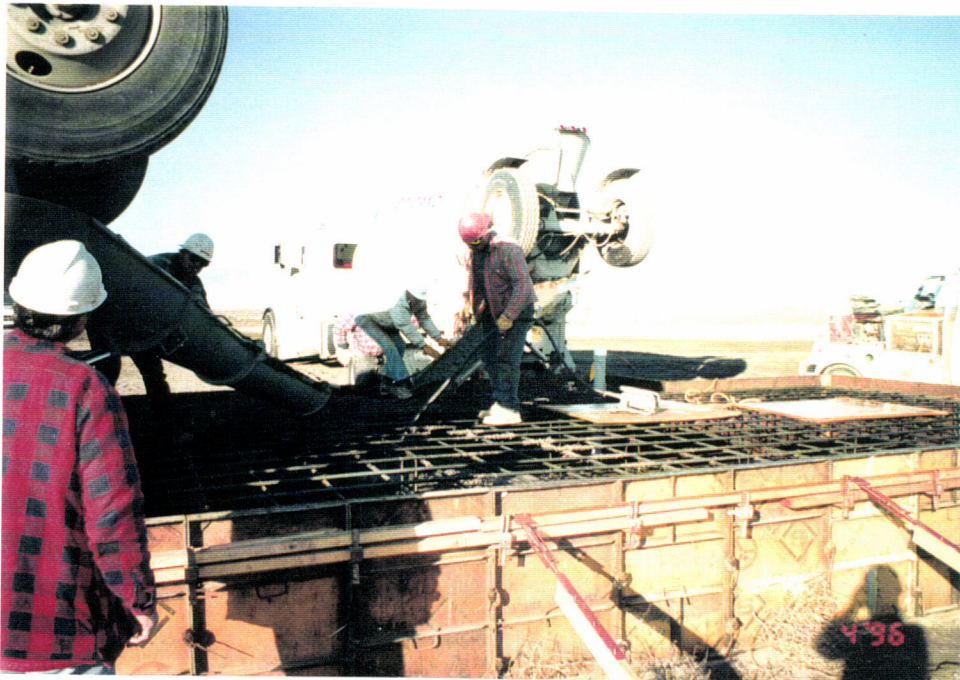




3960092-01-O-P

Placing concrete for the vacuum equipment interface slab at the northwest arm Corner Station.



3960092-02-O-P

Continuing to place, until done, concrete for the vacuum equipment interface slab at the northwest arm Corner Station.



3960092-03-O-P

Continuing to place, until done, concrete. Quality assurance activity in the foreground.

G960092-



G960092-04 -O -P

Date: 3/22/96
Typical excavation
along the both arms
for the installation of
the capillary barrier.



G960092-05 -O -P

Date: 3/24/96
Typical placement of
the first layer of the
capillary rock along
both arms.



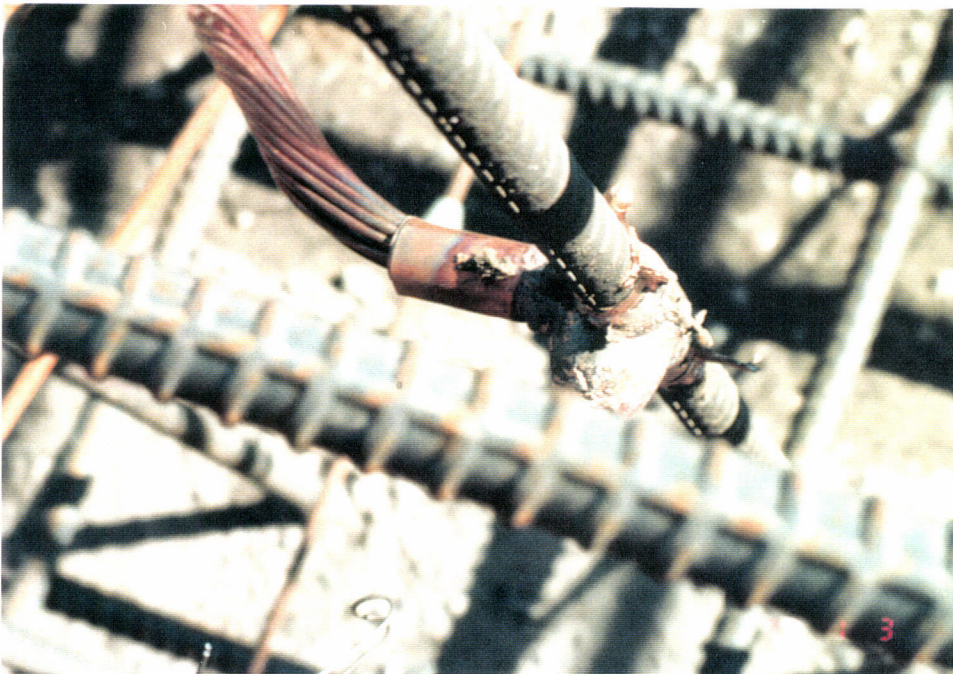
G960092-06 -O -P

Date: 3/28/96
Typical placement of
the second layer of
the capillary rock
along both arm



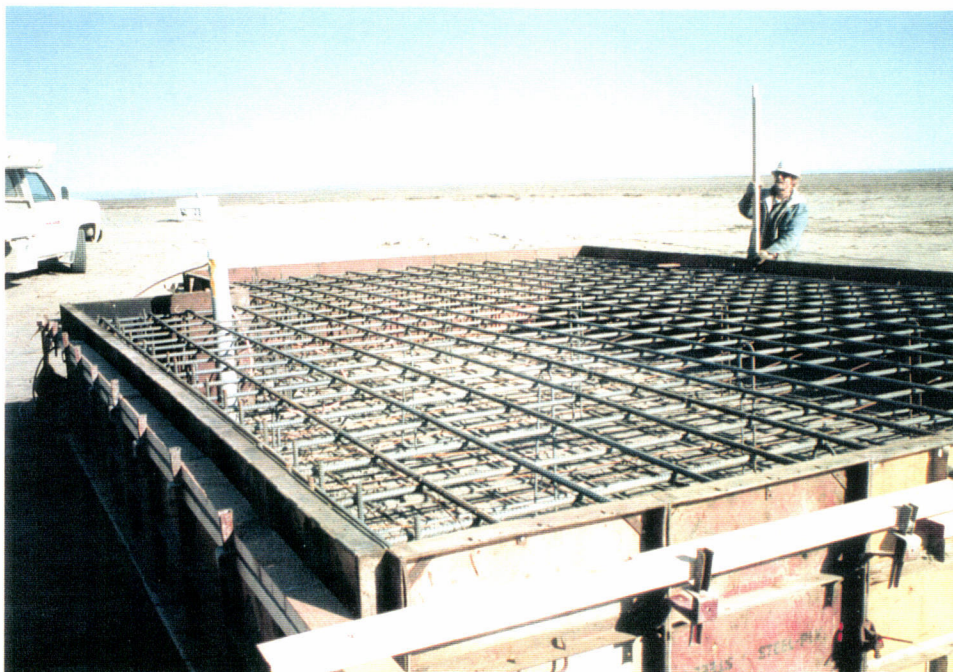
G960092-07-O-P

Date 3/29/96
Installing forms and rebar, and ground wire for the vacuum equipment interface slab.



G960092-08-O-P

Date 3/29/96
Installing forms and rebar, and ground wire for the vacuum equipment interface slab. Cad-weld ground wire to the rebar.



G960092-09-O-P

Date 3/29/96
Installing forms and rebar, and ground wire for the vacuum equipment interface slab, final check and inspection.



3960092-10 -O -P

Date: 3/27/96
Typical sequence of work for the vacuum equipment interface slab walls, forming.



3960092-11 -O -P

Date: 3/27/96
Typical sequence of work for the vacuum equipment interface slab walls, concrete.



G960092-12 -O -P

Date: 3/27/96
Typical sequence of work for the vacuum equipment interface slab walls, stripping forms, filling the snap tie voids and backfilling.



3960092-13 -O-P

Date: 3/25/96
Clearing the temporary
area for the rock
washing equipment and
concrete batch plant



3960092-14 -O-P

Date: 3/29/96
Clearing area in
preparation for the
concrete batch plant.



3960092-15 -O-P

Date: 3/29/96
Clearing area in
preparation for the
concrete batch plant.



3960092-16 -O -X

Date: 3/26/96
Scraper excavating
along the beam tube
for placement of the
capillary barrier on
the southwest arm.

NO ORIGINAL PHOTO



3960092-17 -O -X

Date: 3/26/96
Scraper continues the
excavation along the
southwest arm.

NO ORIGINAL PHOTO



3960092-18-O-P

Date 3/21/96
excavation from the
Corner Station to the
Mid Station along the
southwest arm has
been virtually
completed.



3960092-19 -O-X

Date: 3/25/96
Hanford gravel pit No. 6
where Acme is set up
for mining and crushing
gravel for the LIGO site

NO ORIGINAL PHOTO



3960092-20 -O-X

Date: 3/25/96
Different view of
Hanford gravel pit No.
6.

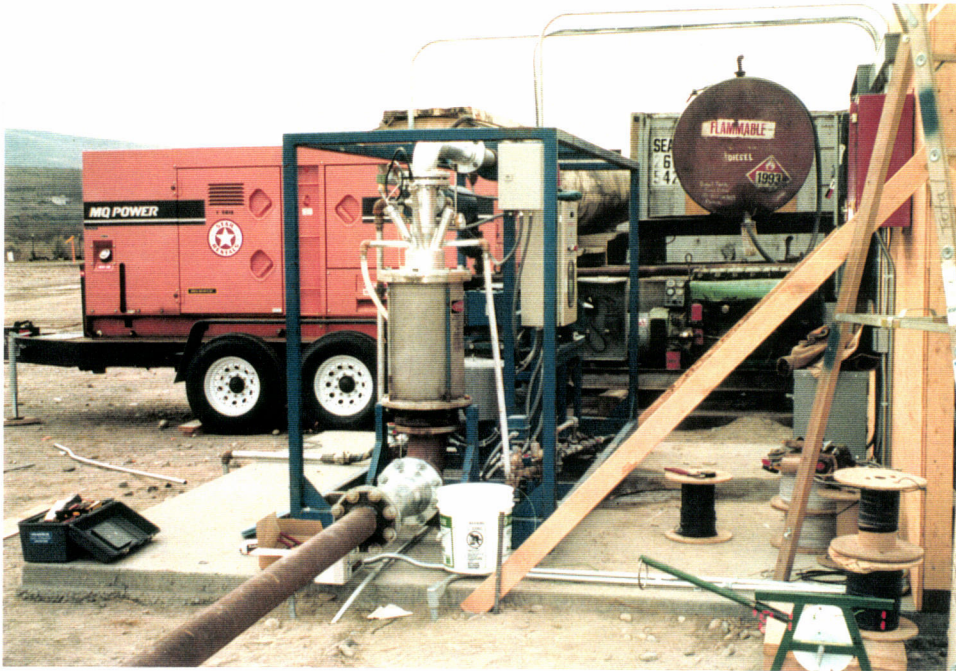
NO ORIGINAL PHOTO



3960092-21 -O-X

Date: 3/25/96
Different view of
Hanford gravel pit No.
6.

NO ORIGINAL PHOTO



3960092-22-OX

Date: 3/25/96
Power and steam
Generator for curing the
precast bean tube
enclosure segments
after concrete
placement

NO ORIGINAL PHOTO



3960092-23-OX

Date: 3/25/96
Steam line and
temporary bolt down of
the forms.

NO ORIGINAL PHOTO

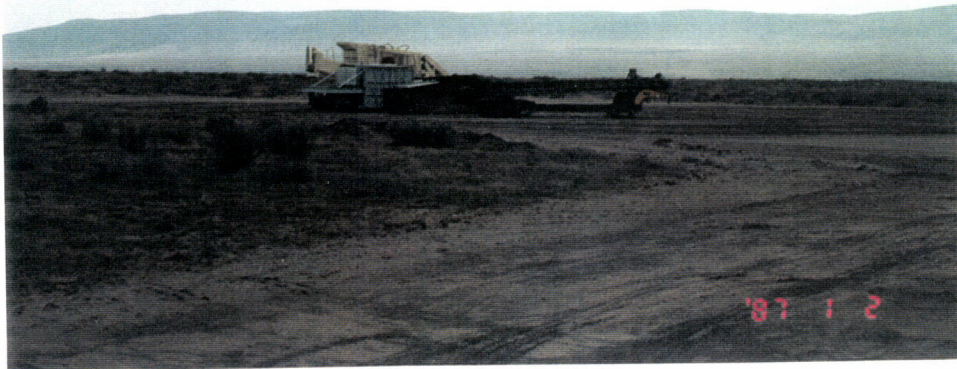


3960092-24-OX

Date: 3/25/96
After stripping of the
bean tube enclosures
the units will be moved
to these pad for
storage.

NO ORIGINAL PHOTO

3960092-25-O-X



Date: 3/26/96
First of the rock
washing equipment
arrived at site

3960092-26-O-P



Date: 3/25/96
Temporary water line
to the batch plant, the
road & bte crossing
has been completed.

3960092-27-O-X



3/25/1996
Temporary field
offices arrive and
were set into position.