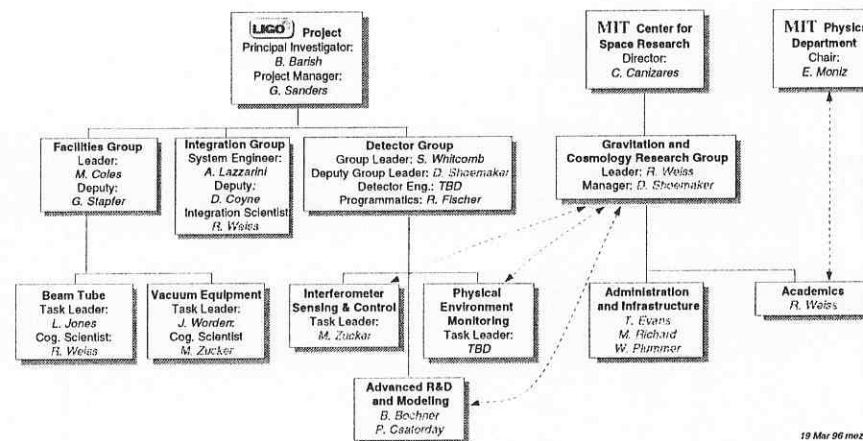


STRUCTURE OF THE GROUP AT MIT

Rai Weiss 20 March 96

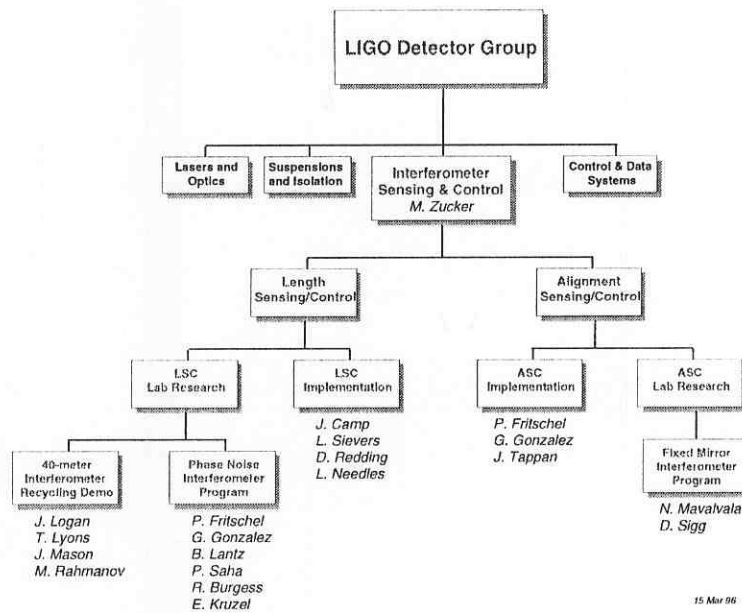
- >> Scientists
 - Peter Fritschel Daniel Sigg
 - Gabriela Gonzalez Rainer Weiss
 - David Shoemaker Michael Zucker
- >> Engineers
 - Ralph Burgess (0.5) John Tappan (0.5)
- >> Graduate Students
 - Brett Bochner Nergis Mavalvala
 - Peter Csatorday Partha Saha
 - Brian Lantz
- >> Undergraduate Students
 - Omar Saleh
- >> Technical Support
 - Tom Evans Ed Kruzel
- >> Secretarial Support
 - Michael Richard (0.6) Will Plummer (0.6)

LIGO/MIT



19 Mar 96 moz

INTERFEROMETER SENSING AND CONTROL



15 Mar 98