

# MEXICAN HAT

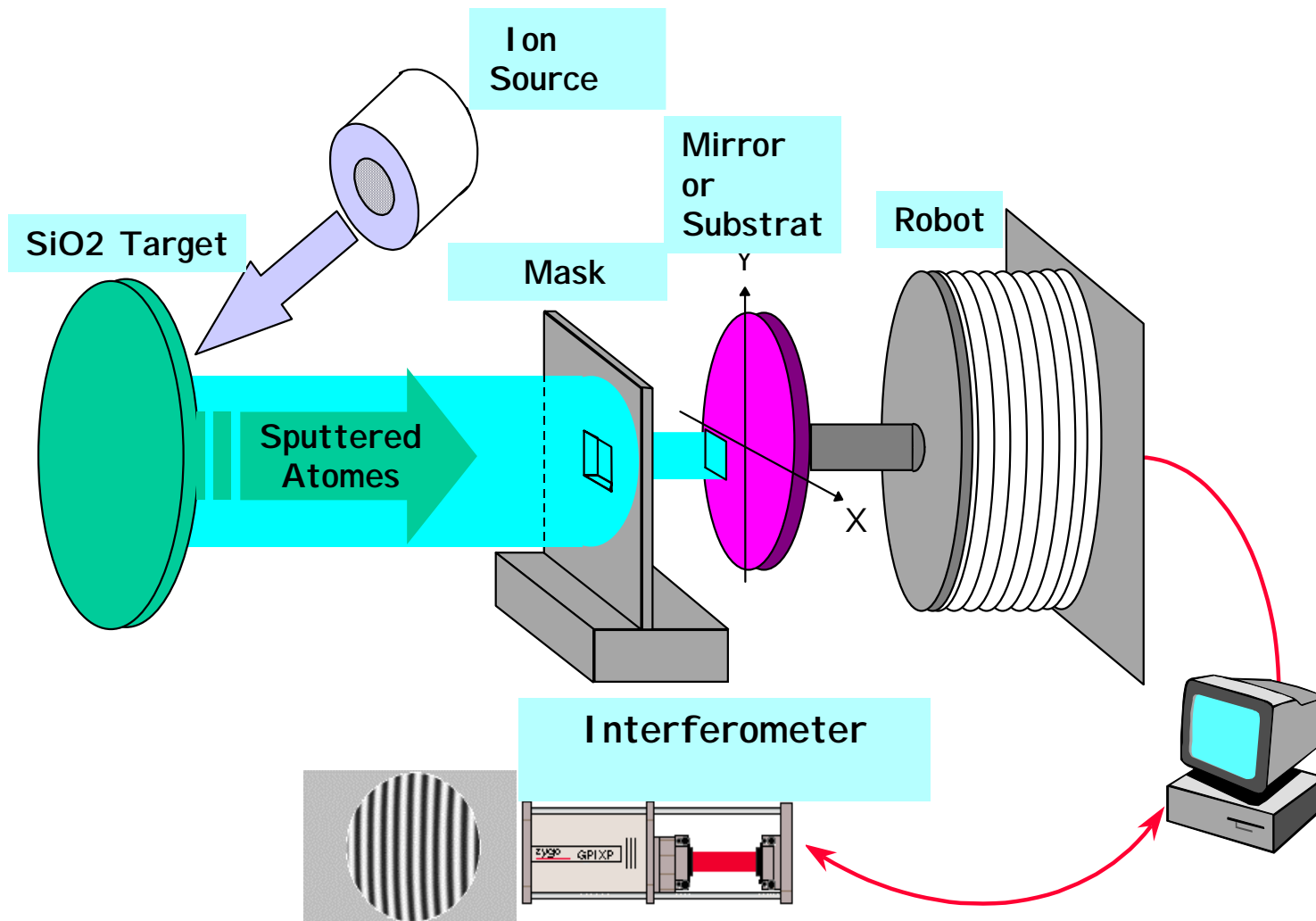
## Substrate Corrective Coating

LIGO-G030115-00-Z

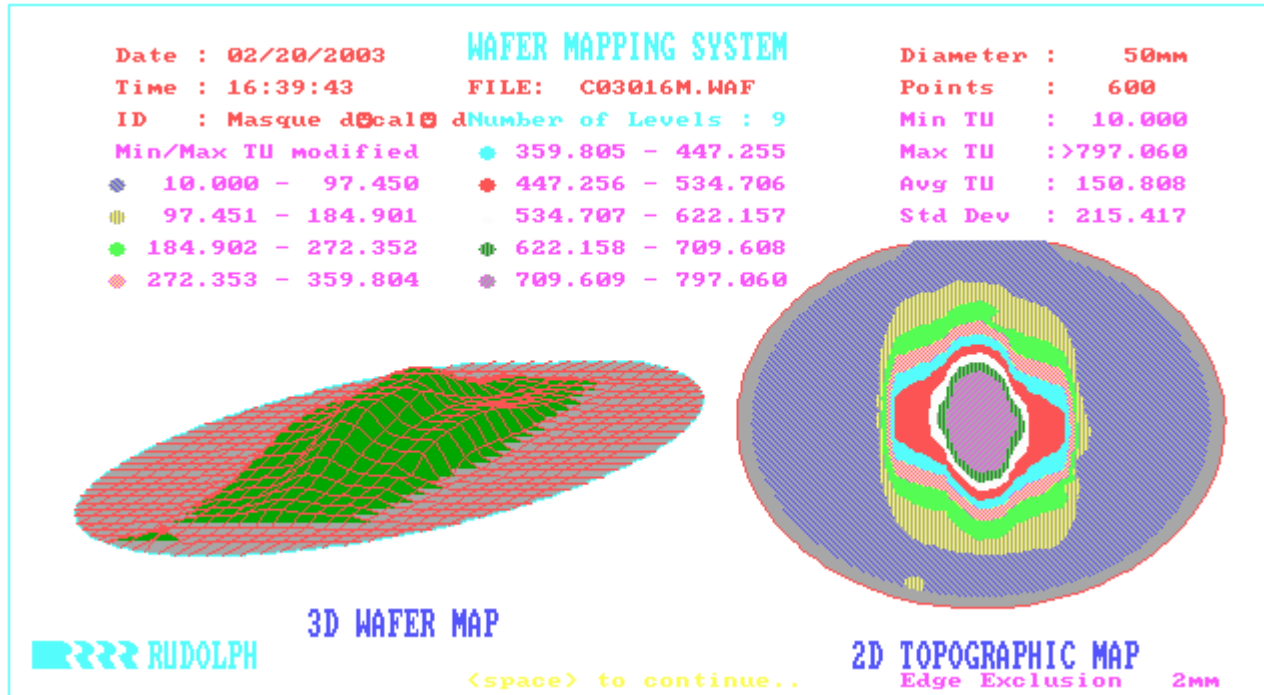


**VIRGO COATER**

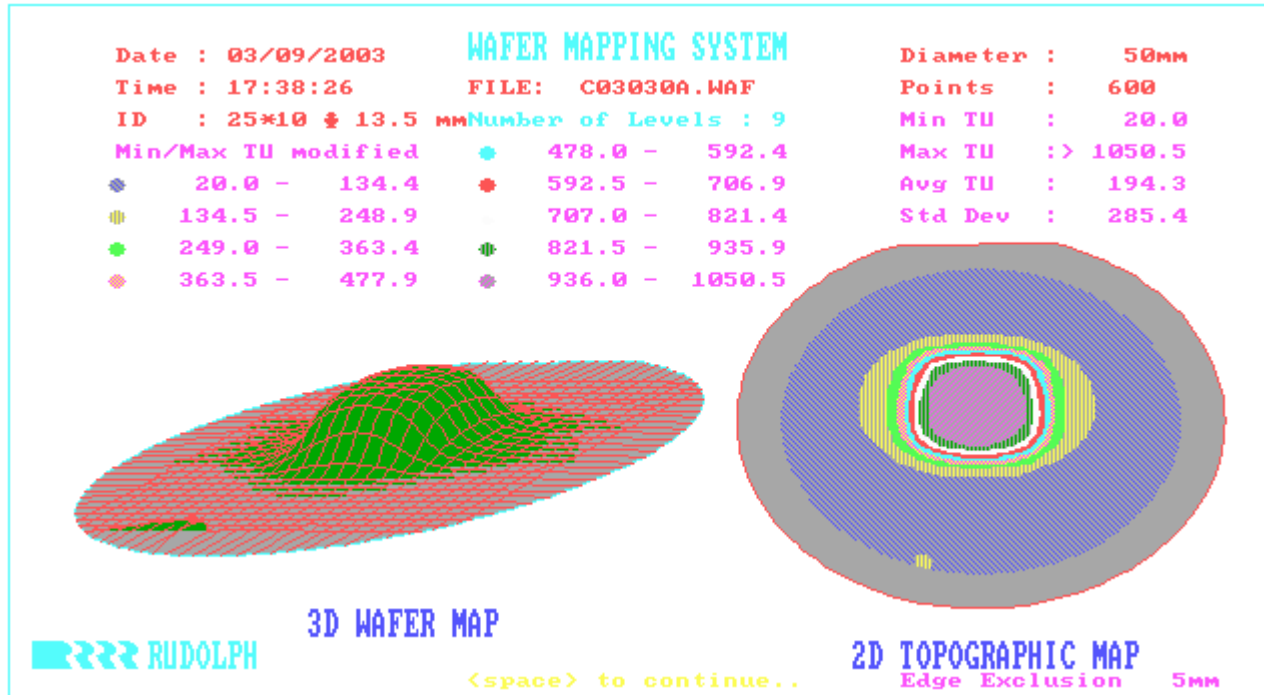
# Corrective Treatment



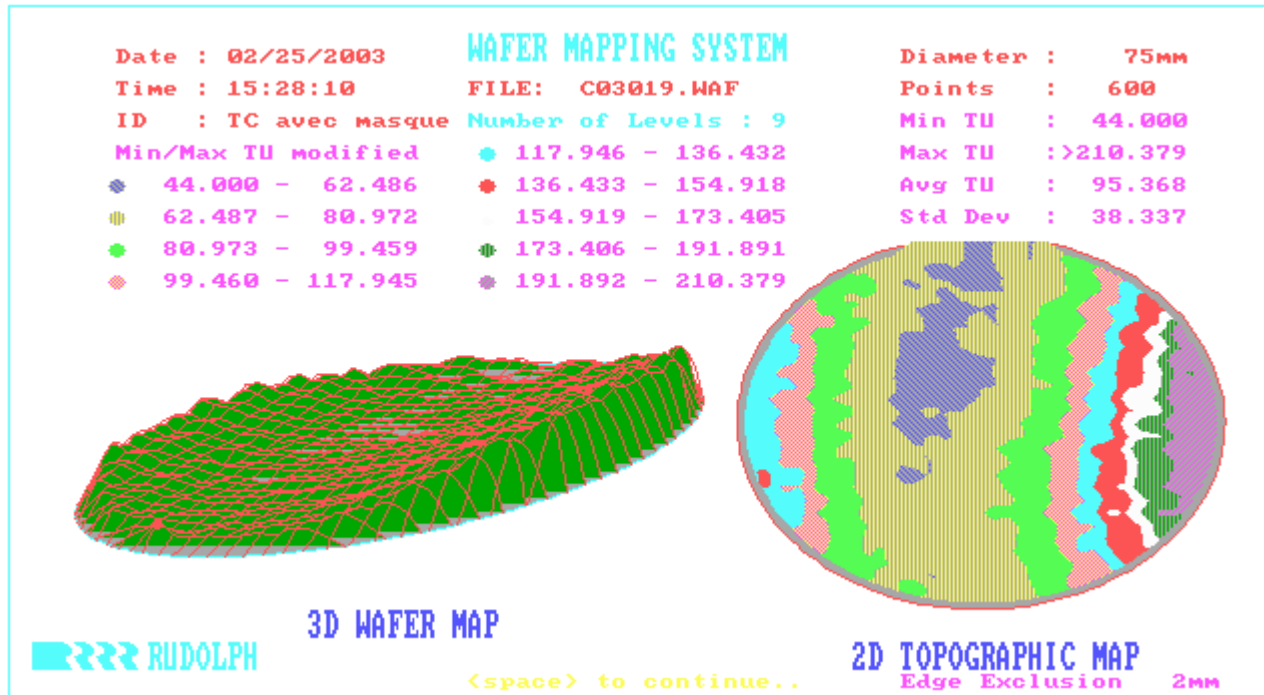
# MASK Optimization n-1

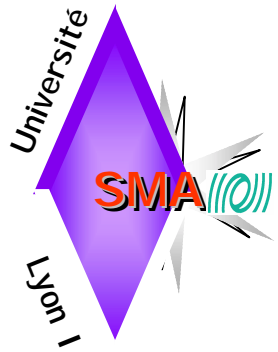


# MASK Optimization n

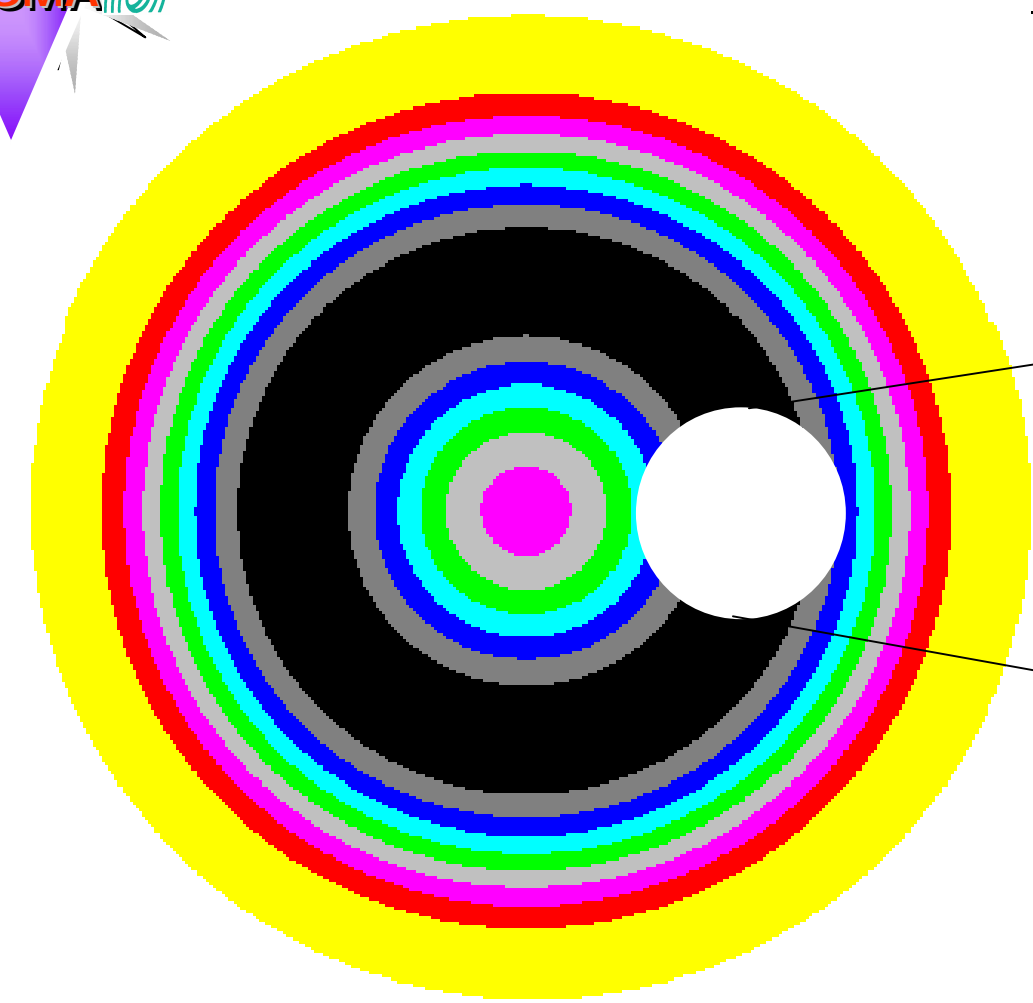


# Mexican Hat 1st try

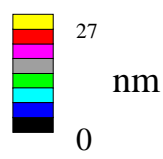
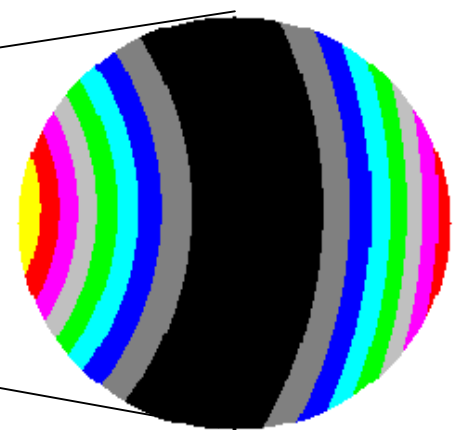




# Top view of a Mexican hat

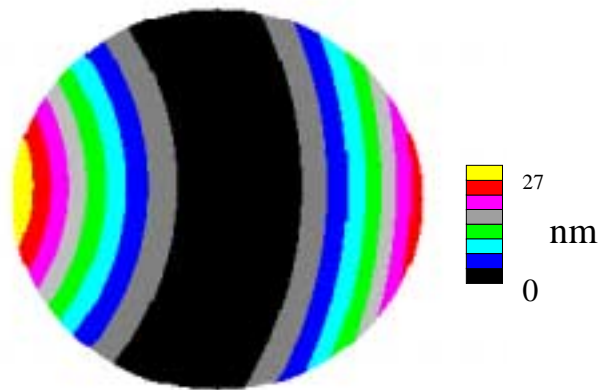


## Studied area of Mexican hat

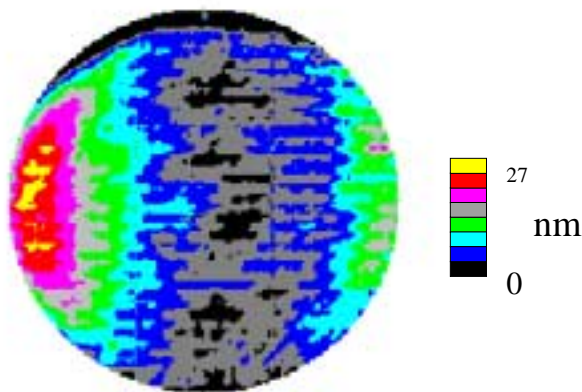


350 mm

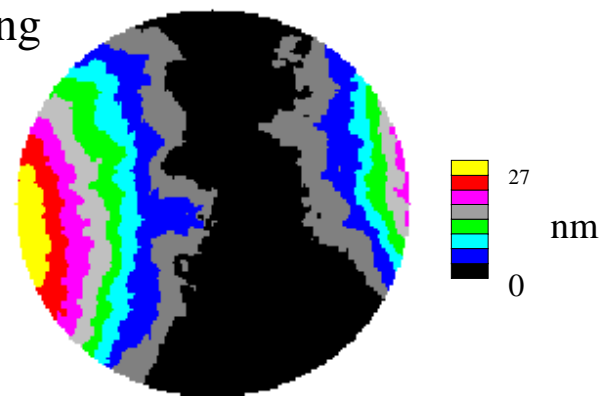
80 mm



Theoretical mexican hat



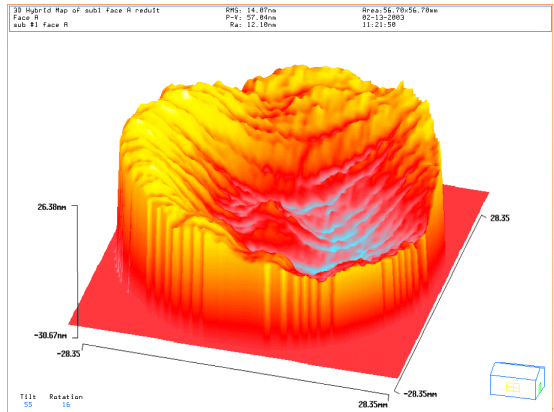
Simulation of the corrective coating



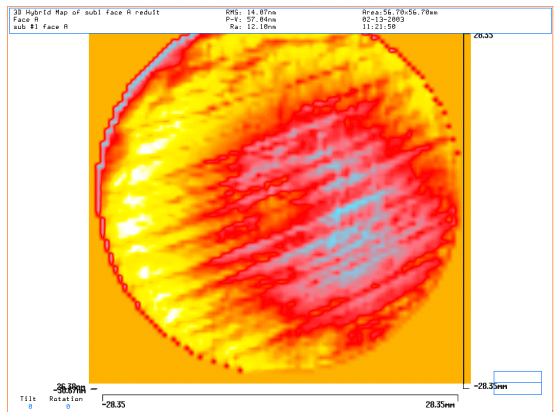
Experimental mexican hat



# before correction



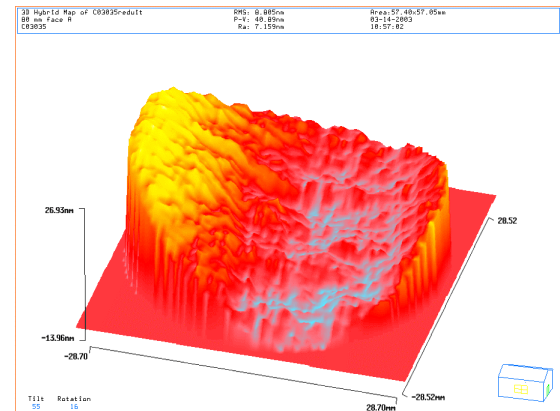
Title: Face A	SMA-VIRGO	DATE: 02-13-2003 11:21:50
Part ID: sub #1 face A	ODE/PHASE SHIFT	Wedge: Surface
Customer: VIRGO	OptiCode - Phase Analysis Software	Polarity: *
Operator: Laurent Pinard	Version 4.23 (c) 1995-2000	
Terms Subtracted: Tilt		



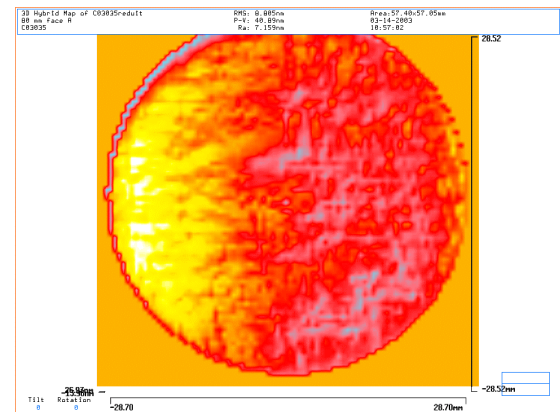
Title: Face A	SMA-VIRGO	DATE: 02-13-2003 11:21:50
Part ID: sub #1 face A	ODE/PHASE SHIFT	Wedge: Surface
Customer: VIRGO	OptiCode - Phase Analysis Software	Polarity: *
Operator: Laurent Pinard	Version 4.23 (c) 1995-2000	
Terms Subtracted: Tilt		

substrate

# after correction



Title: 80 mm Face A	SMA-VIRGO	DATE: 03-14-2003 10:57:02
Part ID: C03035	ODE/PHASE SHIFT	Wedge: Surface
Customer:	OptiCode - Phase Analysis Software	Polarity: *
Operator: Laurent Pinard	Version 4.23 (c) 1995-2000	
Terms Subtracted: Tilt		



Title: 80 mm Face A	SMA-VIRGO	DATE: 03-14-2003 10:57:02
Part ID: C03035	ODE/PHASE SHIFT	Wedge: Surface
Customer:	OptiCode - Phase Analysis Software	Polarity: *
Operator: Laurent Pinard	Version 4.23 (c) 1995-2000	
Terms Subtracted: Tilt		

mexican hat

