



Advanced LIGO Systems Requirements Review

3 July 2001



Agenda

- Systems requirements & design, 1 hr (Peter F)
- Optical layout, 20 min (Dennis C)
- Generic requirements & standards, 10 min (Dennis C)
- LIGO Observatory environments, 20 min (David S)
- Summary



Outline for systems design

- Upgrade approach & philosophy
- System level requirements
- System level design
- Subsystem requirements



Upgrade approach & philosophy

- We don't know what the initial LIGO detectors will see
 - » Design advanced interferometers for improved broadband performance
- Evaluate performance with specific source detection estimates
 - » Optimizing for neutron-star binary inspirals also gives good broadband performance
- Push the design to the technical break-points
 - » Improve sensitivity where feasible - design not driven solely by known sources



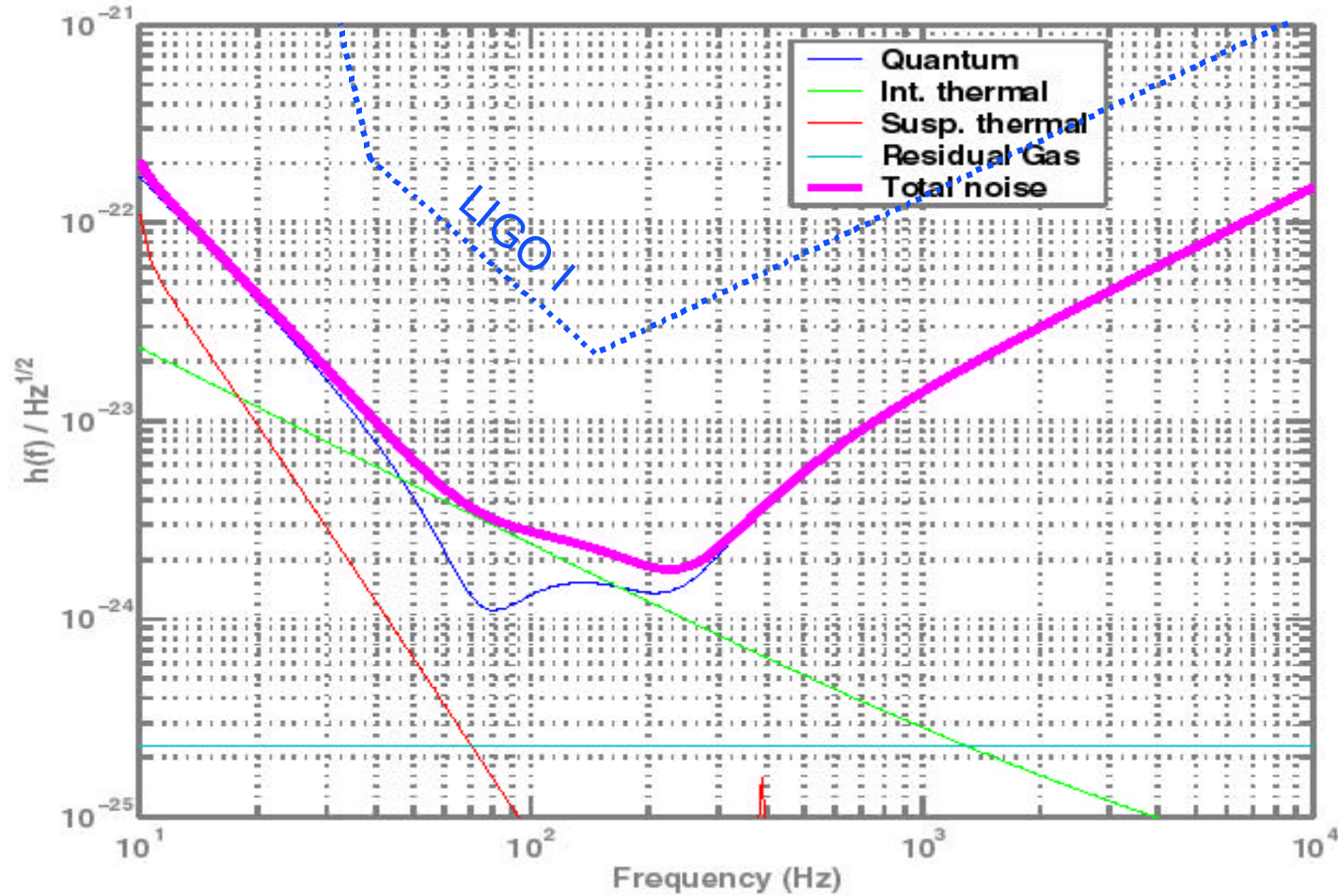
Upgrade approach, cont'd

- Design approach based on a complete interferometer upgrade
 - » More modest improvements may be possible with upgrades of selected subsystem/s, but they would profit less from the large fixed costs of making any hardware improvement
- Two interferometers, the LLO and LHO 4k units, would be upgraded as broadband instruments
- Current proposal for third interferometer (LHO 2k):
 - » increase length to 4 km
 - » implement a narrowband instrument, tunable from ~500 Hz-1 kHz



Estimated strain sensitivity

40 kg sapphire test masses



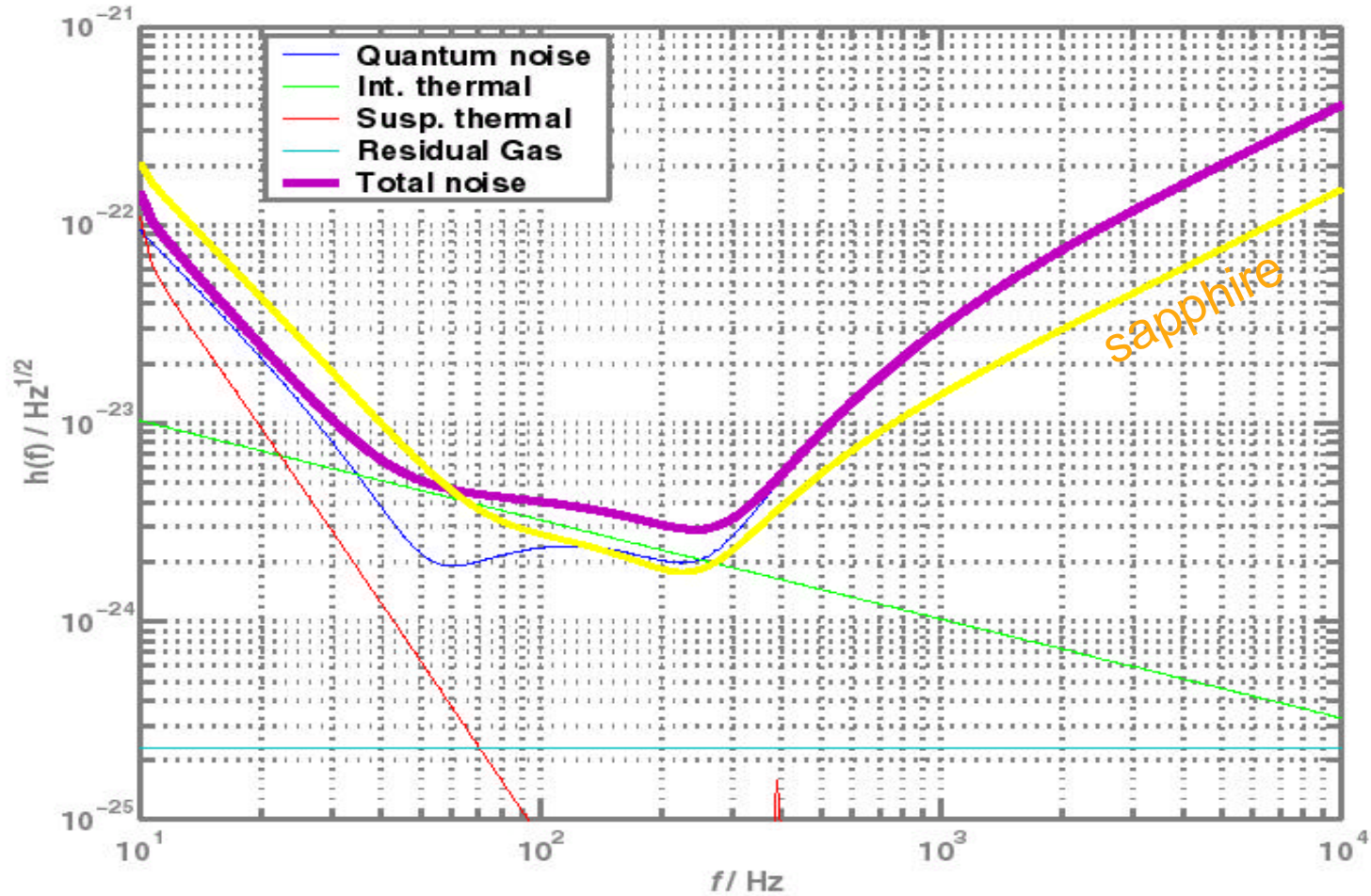


LIGO Top level performance & parameters

Parameter	LIGO I	LIGO II
<i>Equivalent strain noise, minimum</i>	$3 \times 10^{-23}/\text{rtHz}$	$2 \times 10^{-24}/\text{rtHz}$
<i>Neutron star binary inspiral range</i>	19 Mpc	300 Mpc
<i>Stochastic backgnd sens.</i>	3×10^{-6}	$1.5\text{-}5 \times 10^{-9}$
<i>Interferometer configuration</i>	Power-recycled MI w/ FP arm cavities	LIGO I, plus signal recycling
<i>Laser power at interferometer input</i>	6 W	125 W
<i>Test masses</i>	Fused silica, 11 kg	Sapphire, 40 kg
<i>Seismic wall frequency</i>	40 Hz	10 Hz
<i>Beam size</i>	3.6/4.4 cm	6.0 cm
<i>Test mass Q</i>	Few million	200 million
<i>Suspension fiber Q</i>	Few thousand	~30 million



Comparison with 40 kg fused silica test masses, $P_{in} = 80$ W



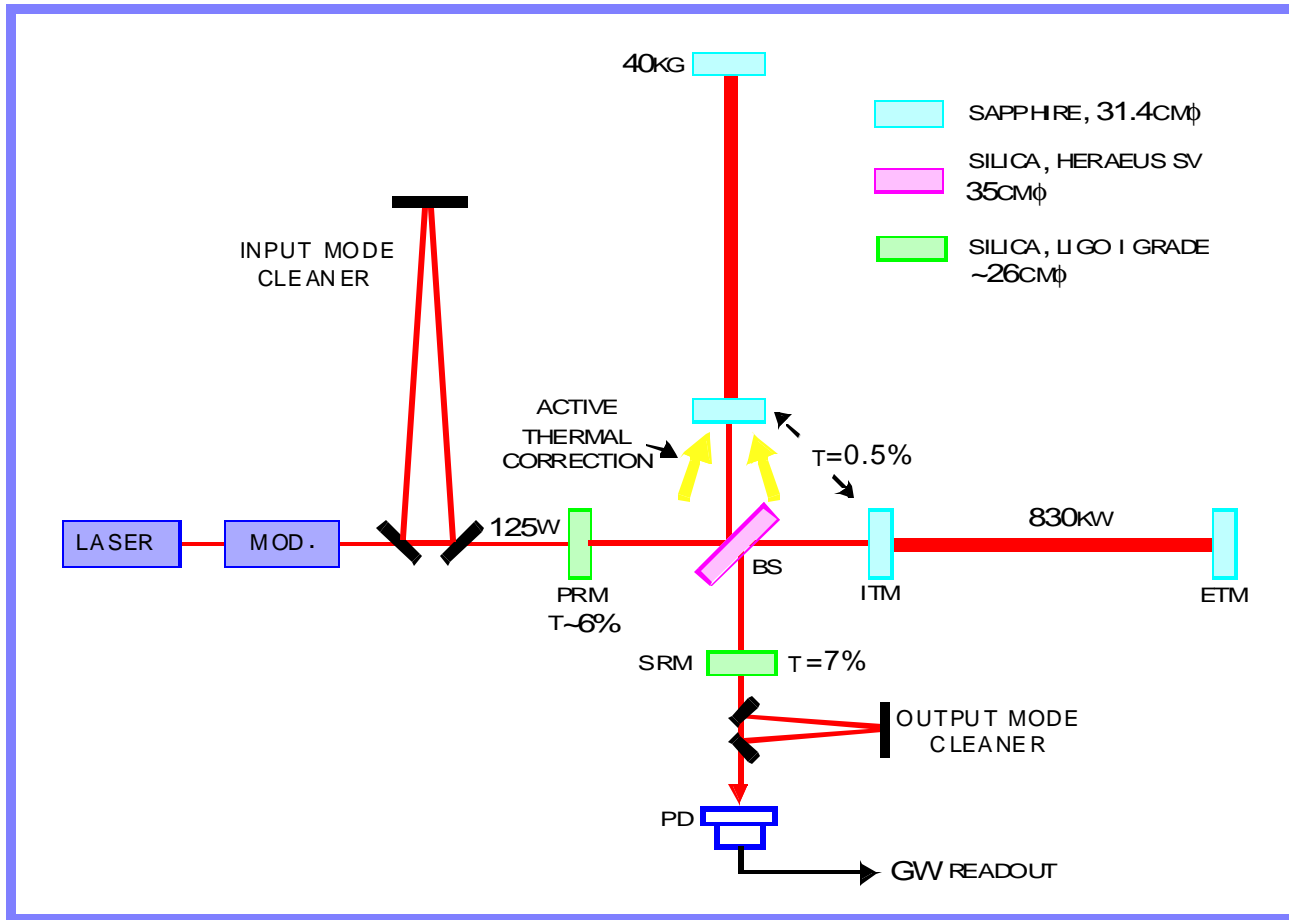


System level requirements

- Non-gaussian noise
 - » Difficult to establish quantitative requirements
 - » Subsystems should be designed to avoid potential generation of non-gaussian noise
- Availability – as for initial LIGO:
 - » 90% for a single interferometer (40 hrs min continuous operation)
 - » 85% for two in coincidence
 - » 75% for three in coincidence
- Environmental sensing
 - » Initial PEM system basically adequate, some sensor upgrades possible
- Infrastructure constraints
 - » Designs must fit with existing LIGO facilities, with two possible changes:
 - Larger diameter mode cleaner tube
 - mid-station BSCs moved to the ends, for 4km length 3rd ifo
- Data acquisition
 - » Same sample rate and timing requirements as for initial LIGOb
 - » Each subsystem must be designed with appropriate data acquisition channels



System level design – basic layout





What we've left out

- Internal thermal noise
 - » Flat-topped beams to reduce thermo-elastic noise
 - » Cooling of the test masses
 - » Independent readout of test mass thermal motion
- Quantum noise
 - » Quantum non-demolition techniques
 - » Very high power levels, coupled with all-reflective configurations
- Seismic noise
 - » Independent measurements of gravitational gradient noise



Systems level design: signal recycling

- Provides ability to do some shaping of the response, but principal advantage is in power handling:
 - » Signal recycled interferometer: 200 Mpc NBI range, 2.1 kW beamsplitter power
 - » Non-signal recycled, same input power: 180 Mpc range, 36 kW beamsplitter power
- Limit to signal vs power recycling comes from losses in the signal recycling cavity
 - » Arm cavity finesse of ~ 1000 probably OK
 - » Arm cavity finesse of $\sim 10,000$ probably too high
- Not requiring a tunable or selectable signal recycling mirror
 - » Not necessary for the 'broadband performance' goal



Output mode cleaner

- Reduce the output power to a manageable level
 - » 20x higher input power (compared to initial LIGO) leads to 2-3x higher output power
 - 1-3 watts total power w/out a mode cleaner
 - » Output mode cleaner leaves only the TEM₀₀ component of the contrast defect, plus local oscillator
 - ~100 mW total power w/ mode cleaner
- Necessary for dc readout scheme
 - » Technical laser intensity noise must be controlled
 - » Even with rf readout, detecting and getting shot noise in several Watts is tough
- Two possible designs:
 - » Dc readout: short (~0.5 m) rigid cavity, modest isolation needs
 - » RF readout: essentially a copy of the input mode cleaner (isolation requirements probably much more lax)

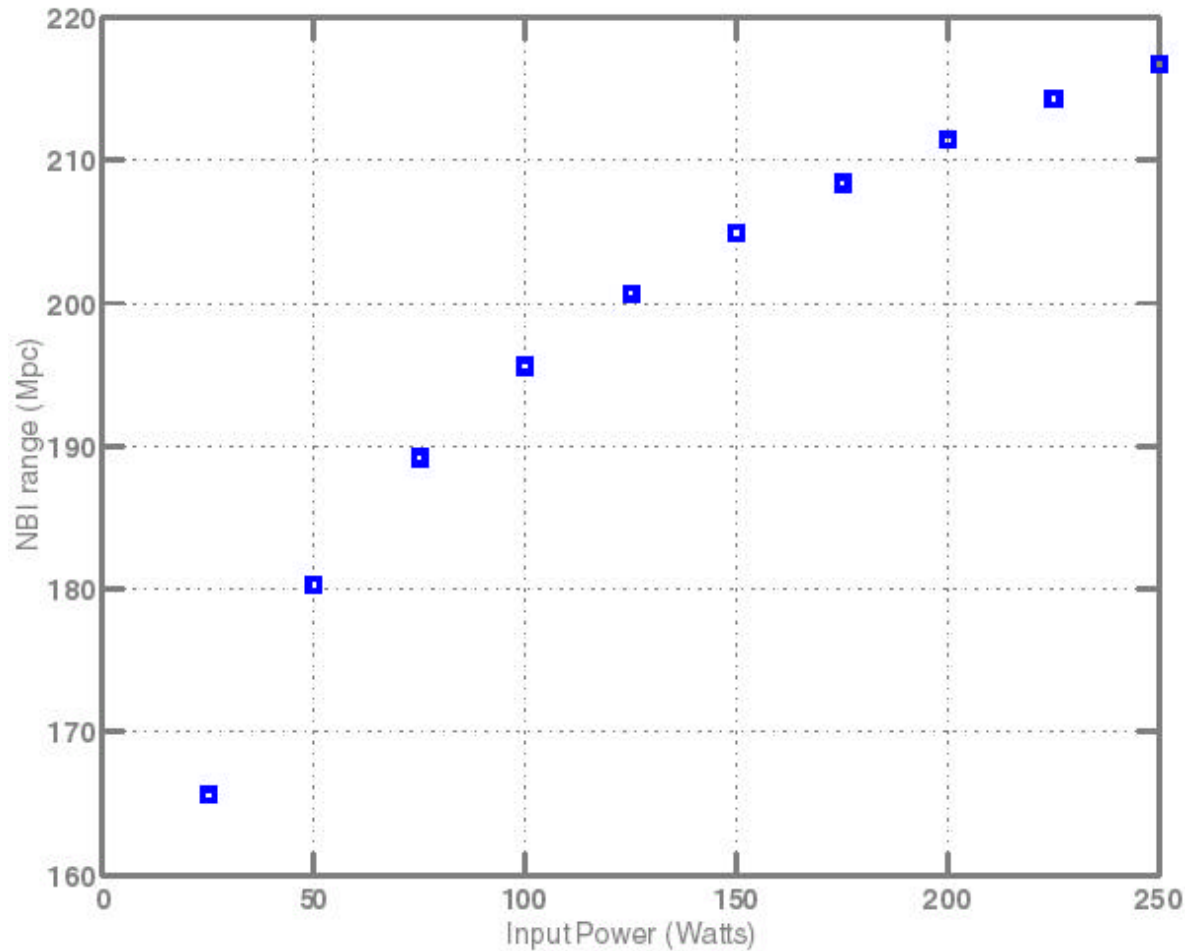


Active thermal compensation

- Thermal loading comparison, total absorbed power:
 - » Initial LIGO: 20 mW
 - » AdLIGO, sapphire: 350–1600 mW, silica: 60-340 mW
 - » Sapphire has lower thermal lensing by a factor of 25, lower thermo-elastic distortion by a factor of 2
 - » AdLIGO must also operate at low power
- Required compensation: roughly a factor of 10 in opd
- Two compensation methods
 - » Radiative ring heater, close to optic
 - » External heating laser beam, scanned over the optic
- Compensation plate
 - » Several advantages for active compensation actuation: limit temperature rise in TM; avoid noise of laser actuator; easier to interface



Input power



40kg sapphire
test masses

180 W from laser



165 W from PSL



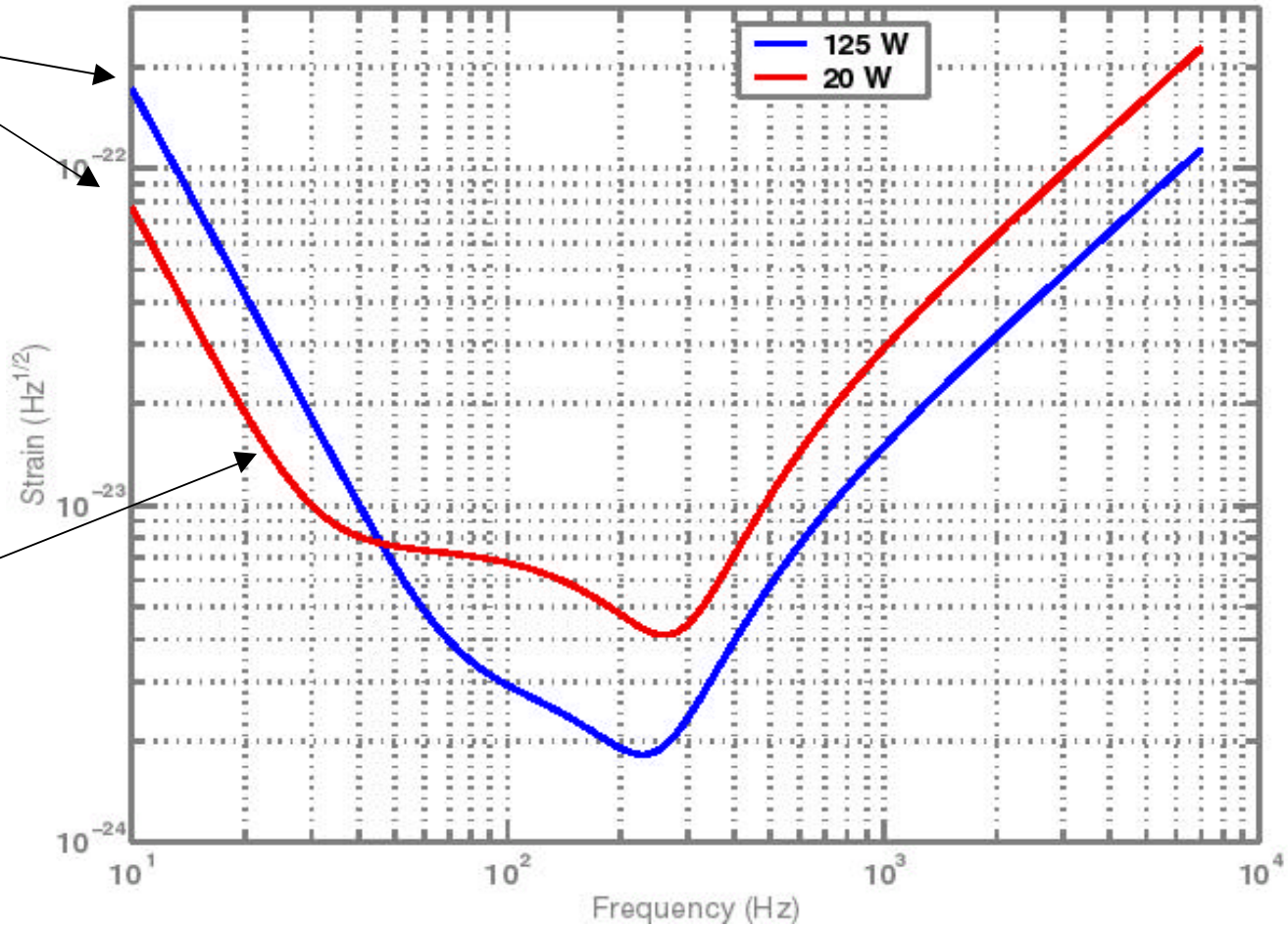
125 W from MC



Low & High power modes

Factor of 3
difference
at low
frequencies

Quantum
radiation
pressure
roughly equal
to suspension
thermal noise





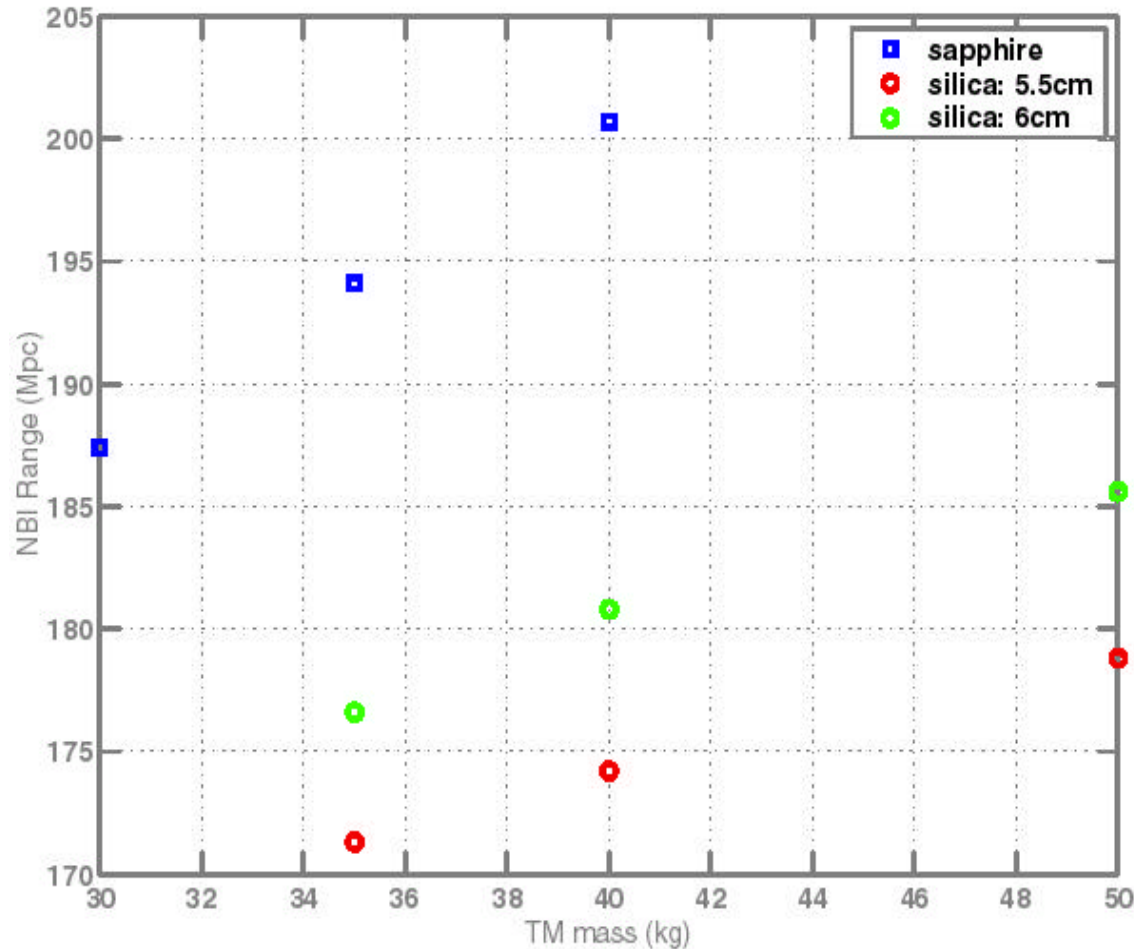
Test mass material: sapphire vs fused silica

- Sapphire is baseline design:
 - » 20% larger NBI range
 - » Potential for thermal loading advantage
 - » Still under development:
 - Size
 - Absorption
 - Homogeneity
 - Scattering
- Silica
 - » Better understood materials properties
 - » Size available, but expensive



Test mass size and mass

Bigger is better!



40 kg a practical maximum for sapphire (for AdL timescale)

Fused silica: choice not so clear

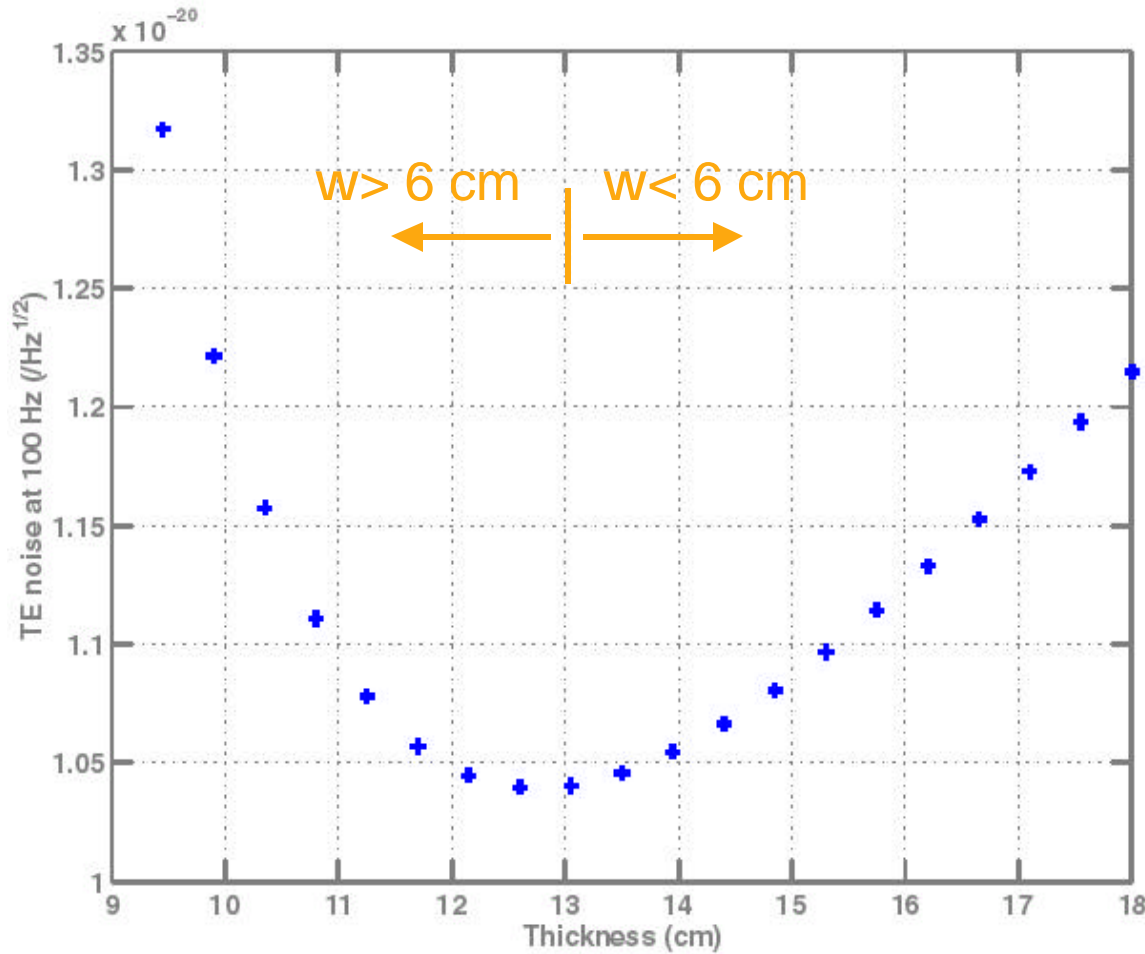


Beam size

- Win quickly with sapphire, $w^{-3/2}$, more slowly with fused silica, $w^{-1/2}$
- Limits imposed by:
 - » Aperture loss in arm cavities
 - » Polishing very long radii of curvature
 - » Attaining polishing uniformity over a larger area
 - » Stability of arm cavities in the presence of mirror distortions and misalignments
- Sapphire
 - » With an upper limit of 15 ppm aperture loss, beam radius of 6.0 cm minimizes thermo-elastic noise, for a 40 kg piece
- Silica
 - » Probably limited more by thermal distortions; using 5.5 cm for now



40 kg sapphire optimization



Aperture loss kept constant at 15 ppm



Seismic wall frequency: 10 Hz

- Specific source detection
 - » Sensitivity to NBIs or stochastic background doesn't significantly change for cutoff frequencies less than 15 Hz
 - » Somewhat more sensitive for intermediate mass BH-BH mergers; still probably no significant loss for any cutoff less than 12-13 Hz
- Technology threshold
 - » Horizontal ground motion (isolated by seismic + suspension) crosses quantum radiation pressure & suspension thermal noise below 10 Hz
 - » Vertical isolation not so large, since last stage of suspension is relatively stiff; couples to beam path at a level of ~ 0.001
 - » Fiber cross section also driven by minimizing thermal noise: smallest diameter fiber is not the best
 - » By using a dense penultimate mass material, it appears feasible to keep the vertical mode under 10 Hz



GW channel readout: 2 candidates

- RF readout, as in initial LIGO
 - » Phase modulate at interferometer input
 - » Arrange parameters for high transmission of RF sidebands (one anyway) to output port
- DC readout
 - » Small offset from carrier dark fringe
 - » GW signal produces linear baseband intensity changes
 - » Advantages compared to rf readout:
 - Output mode cleaner simpler
 - Photodetector easier, works at DC
 - Lower sensitivity to laser AM & FM
 - Laser/modulator noise at RF frequencies not critical
- Comparison of quantum-limited sensitivity still in progress



System level noise sources: control of fundamental noise sources

- Quantum noise

- » Photodetector quantum efficiency: $> 90\%$
- » Readout scheme: must not significantly compromise ideal sensitivity

- Internal thermal noise

- » Make beam as big as possible (optimized given sapphire size constraint)
- » Don't spoil Q of substrate material, BUT ...
 - Mirror coatings and possibly polishing have a significant effect, that we may not be able to mitigate

- Suspension thermal noise

- » Under control: stress and shape of fiber
- » Ribbons (10:1 aspect) give about 2x lower noise
 - $\sim 10\%$ improvement in stochastic sensitivity in low-power mode
- » Ribbons not required – too risky for the payoff – though R&D should continue, and they're not ruled out if development goes well



Technical noise

- Each technical noise source must be held below 10% of the target strain sensitivity
 - » Applies to each noise source over the entire GW band
 - » A single noise source degrades the strain sensitivity by a factor of 1.005
 - » ~10 such noise sources in a given frequency region, 5% strain degradation
- Composite technical noise curve formed
 - » Minimum of the sapphire low-power & high-power strain curves
 - » Applies to noise sources independent of the input power
 - » Don't need major revision if we switch to fused silica test masses
 - Sapphire low-power curve covers the silica case

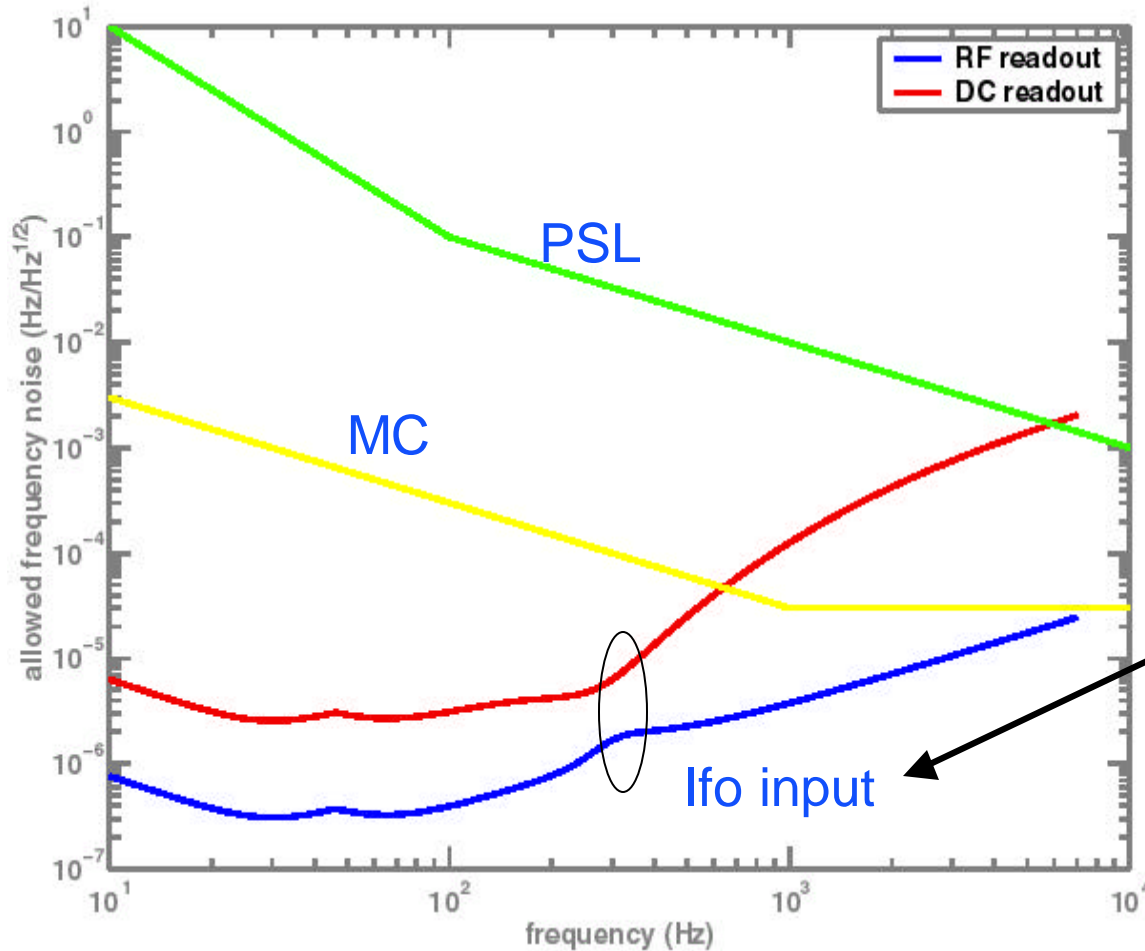


Ground noise

- Displacement noise for each seismic platform:
 - » 2×10^{-13} m/rtHz at 10 Hz
- Test masses: 10^{-19} m/rtHz at 10 Hz
 - » Strain noise: 5×10^{-23} /rtHz, 30% & 60% of the target for high-power and low-power operation, respectively
 - » Suspensions to provide the required isolation
 - » Applies with local damping not active (longitudinal, pitch & yaw)
 - Control comes from global feedback
 - » Must be satisfied with vertical-horizontal coupling of (no smaller than) 0.001
- Beamsplitter: $< 2 \times 10^{-17}$ m/rtHz at 10 Hz
 - » 10x below test mass effect
 - » Vert-horiz coupling: 1.4%



Laser frequency noise



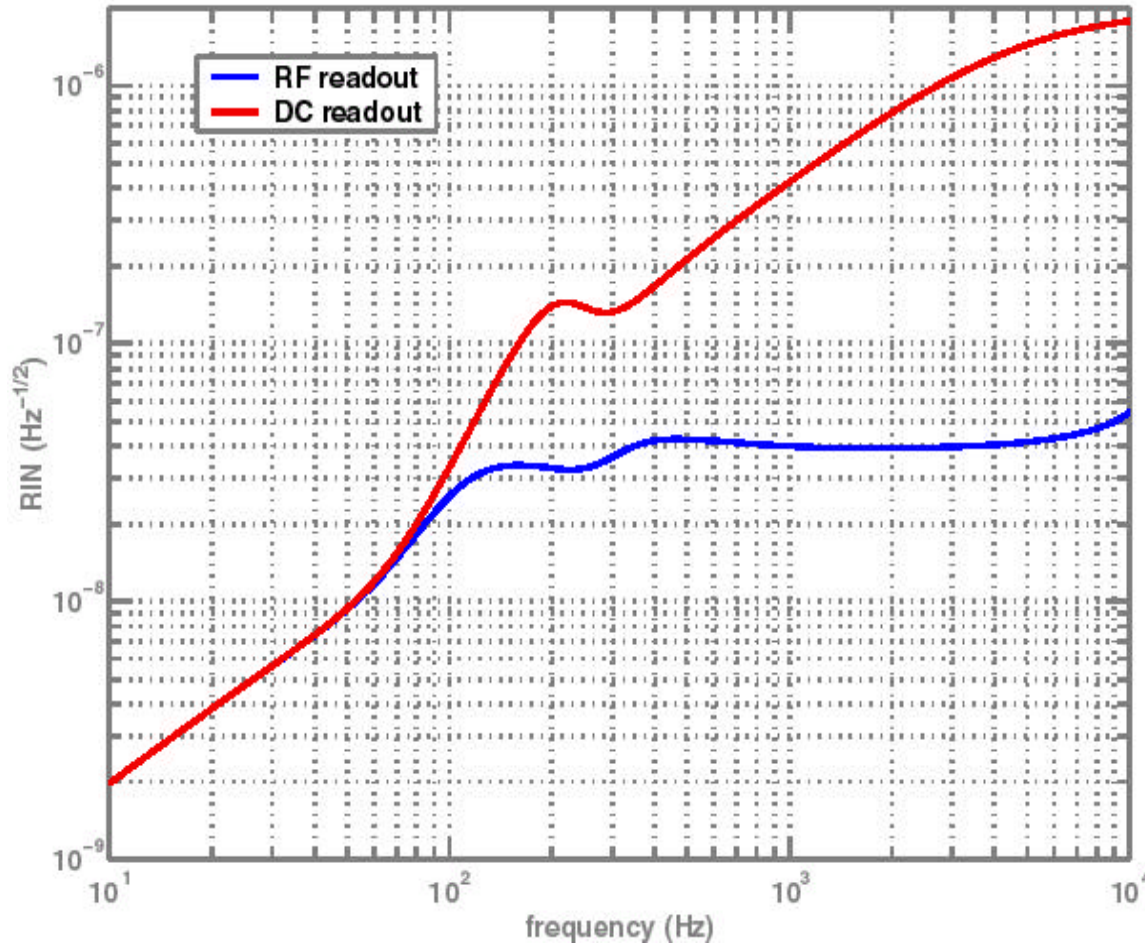
Same three-level stabilization hierarchy as in initial LIGO

PSL & MC specified with more strict RF readout req. in mind

ITM T's matched to 1%; round trip arm loss difference, 20 ppm



Laser intensity noise



Arm cavity power levels matched to 1% (feasible?)

Dominated by technical radiation pressure below 100Hz

RIN: $2 \times 10^{-9}/\text{rtHz}$ at 10 Hz – requires about 100 ma of stabilization photocurrent



Subsystem requirements

- Primary requirements set as a result of, or to support, the systems requirements & design
- For example, PSL requirements are set for:
 - » Output power (TEM₀₀ mode; higher order modes; stability)
 - » Intensity stability (gw band; control band; rf modulation freq)
 - » Frequency stability (gw band; control band)
 - » Modulation inputs (power; frequency)
- Subsystem requirements will be refined and reviewed at each subsystem's design requirements review

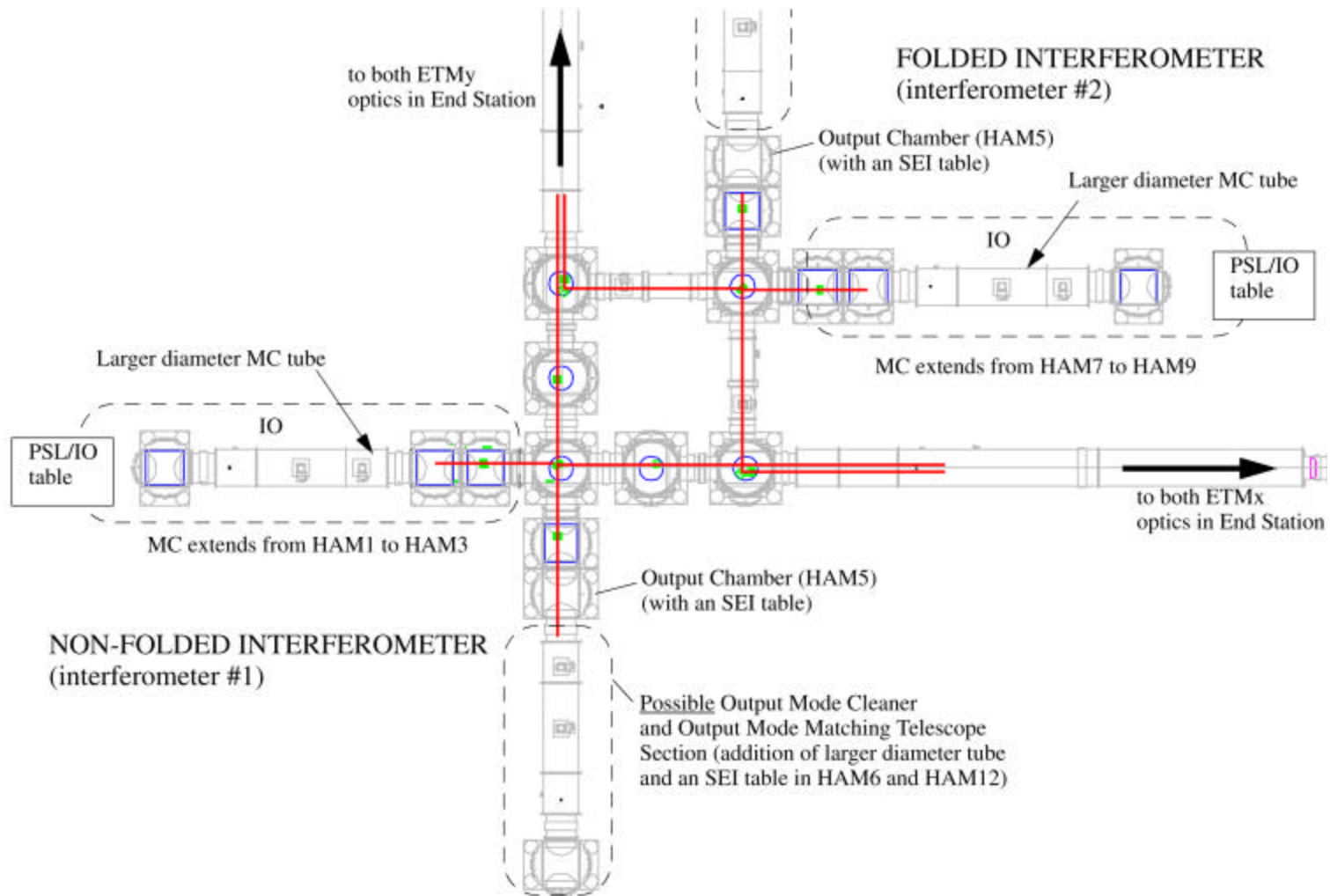


Optical Layout Cavity Lengths

- Input Mode Cleaner (IMC)
 - » IMC FSR = ~ 9 MHz
 - » Length = ~ 16.6 m = \sim HAM1 to HAM3 separation
- Power Recycling Cavity (PRC)
 - » PRC FSR = $2 \times$ IMC FSR = ~ 18 MHz
 - » Length = ~ 8.3 m = \sim HAM3 to BSC2 separation
 - » Asymmetry = 0.2 m
- Signal Recycling Cavity (SRC)
 - » $f = 180$ MHz
 - » Length = ~ 8.4 m = \sim HAM4 to BSC2 separation
- Fabry-Perot (FP) Arm Cavities
 - » Length = ~ 4 km
- Precise frequencies and lengths in the optical layout document
 - » T010076-01
 - » Folded interferometer layout pending

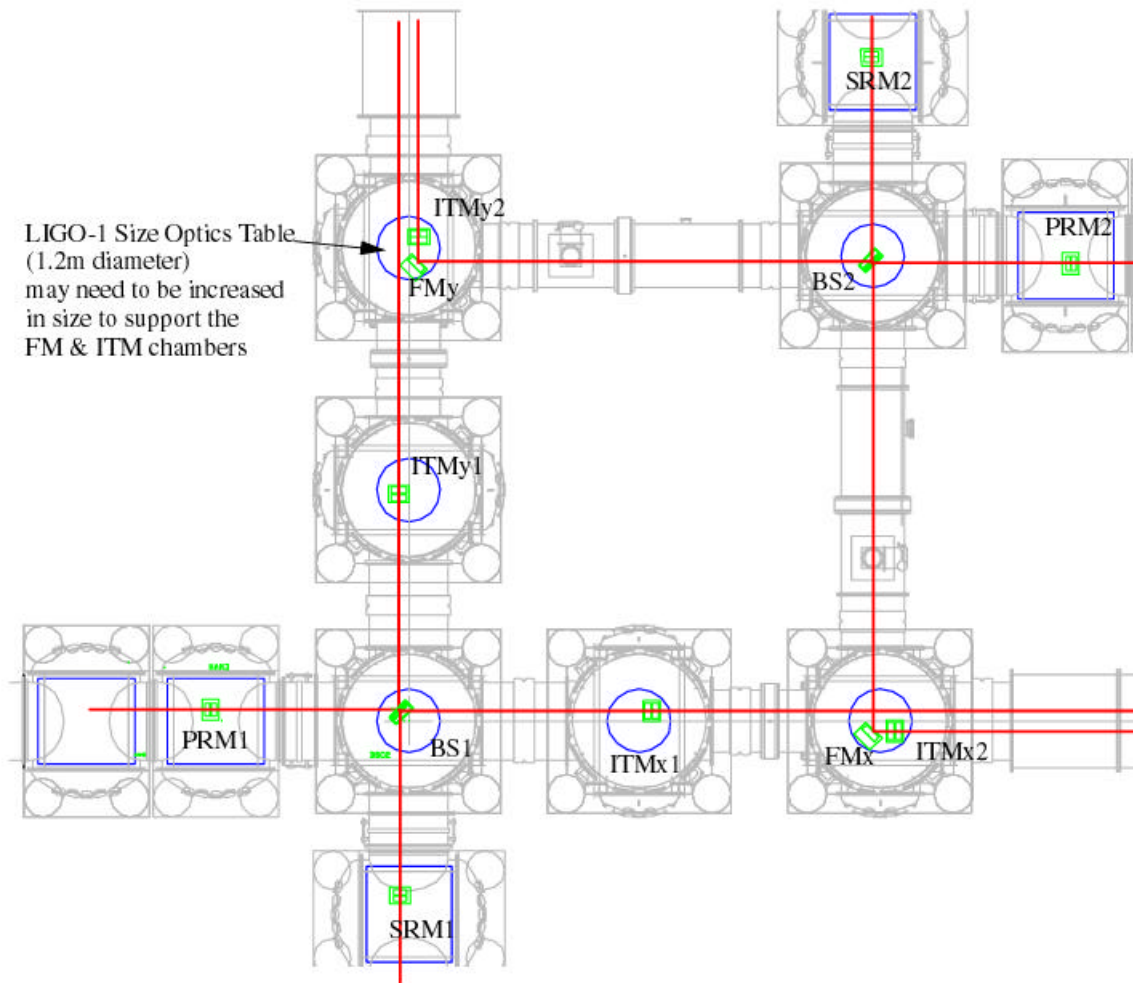


Optical Layout Plan View



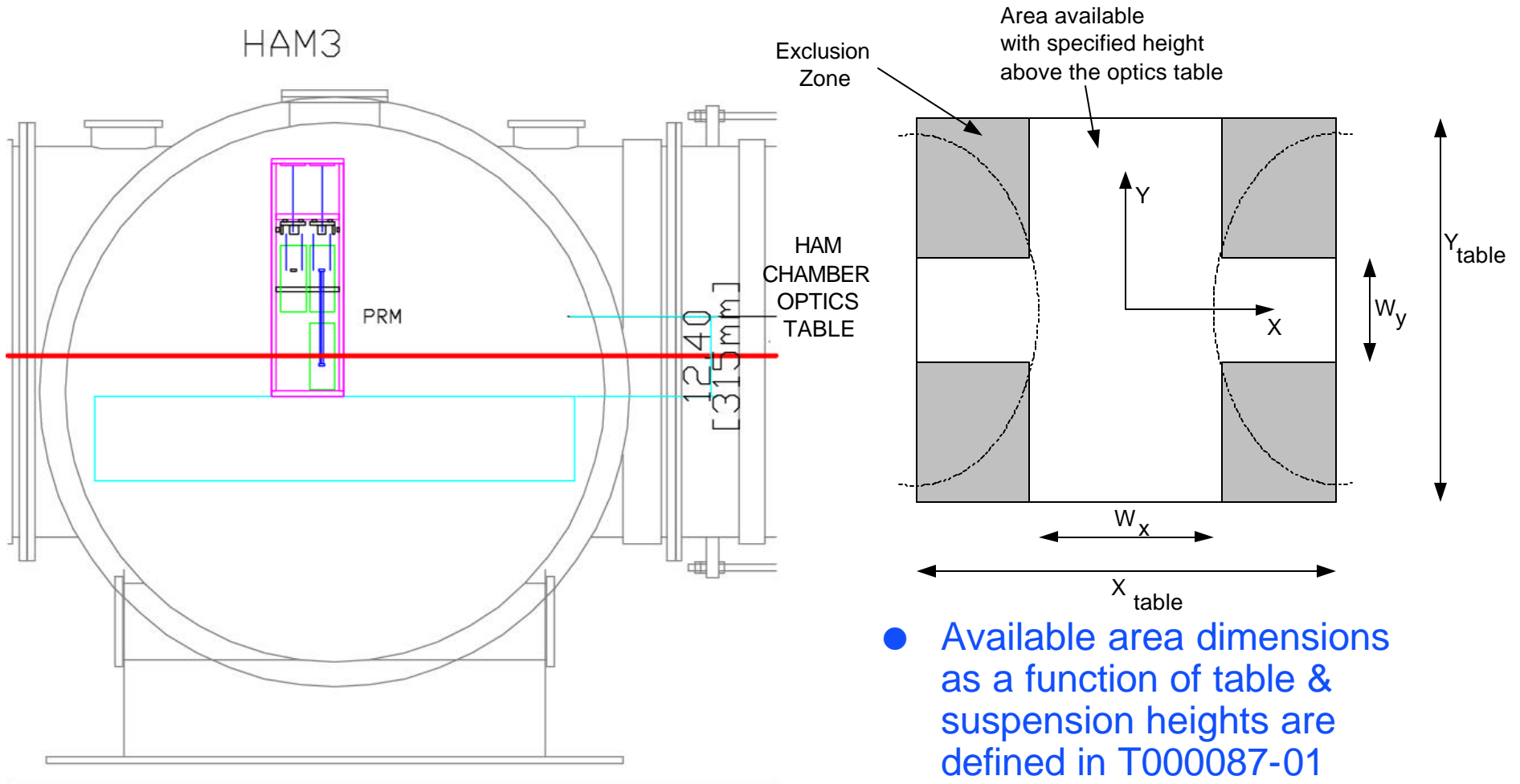


Optical Layout Recycling Cavities





Headroom in HAM Chamber constrains MC, RM placement



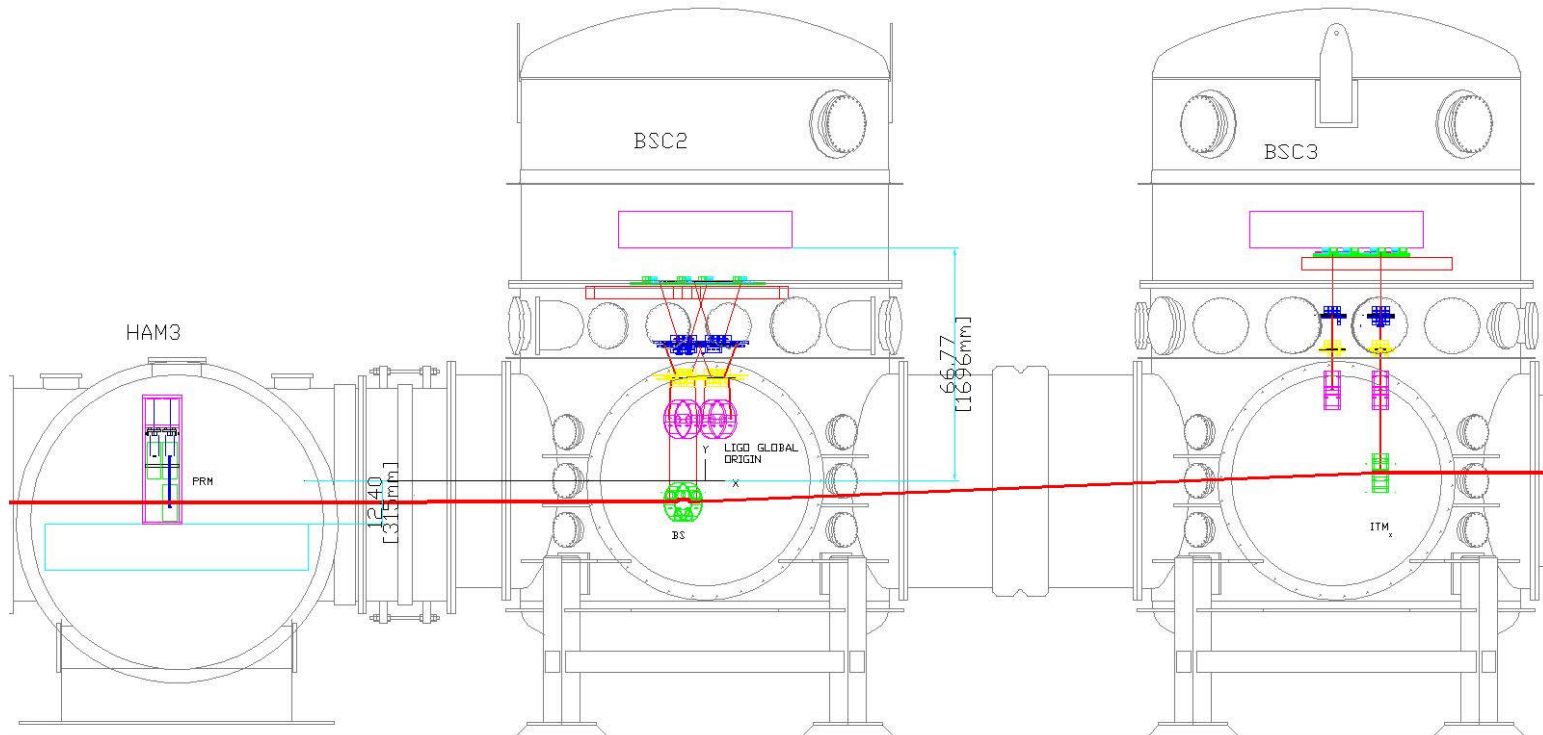


Optical Layout Wedge Options

#	Case	Refracted Path Schematic, elevation view (BS rotated into the plane and angles exaggerated for clarity)
1	Vertical Wedges: ITM & BS with thick sides up (like LIGO-1)	
2	Vertical Wedges: ITM with thick side up, BS with thick side down	
3	Vertical Wedges: ITM and BS with thick sides down	
4	Vertical Wedges: ITM with thick side down, BS with thick side up (current baseline for advanced LIGO)	
5	Horizontal Wedges (left/right orientation will matter due to handedness associated with the folded and non-folded interferometers)	

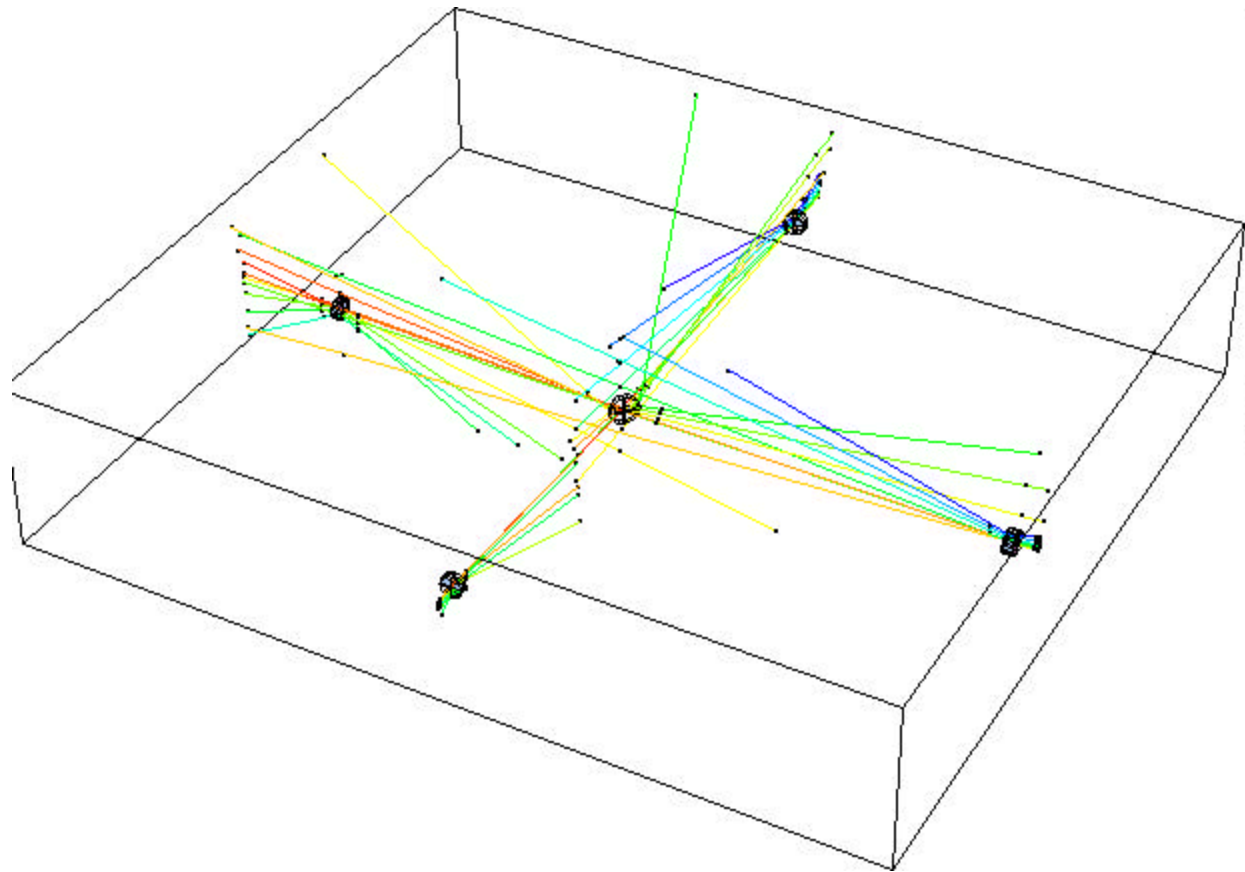



Optical Layout Elevation View





Optical Layout Ghost Beams





LIGO Optical Layout Criteria

- Requires BS wedge angle > currently defined manufacturing limit

Criteria#	Parameter	IFO#1	IFO #2	Requirement
1	Lateral separation between IFO beams	TBD		>400 mm
2a	Maximum BS wedge angle	1.3 ^a	TBD	1 max
2b	Maximum ITM wedge angle	1.1	TBD	3 max
2c	Maximum PRM wedge angle	0.23	TBD	3 max
2d	Maximum SRM wedge angle	0.23	TBD	3 max
3	Wedge angle tolerance	TBD	TBD	1
4	Beam height in HAM chambers ^b	-157 mm	TBD	-157 mm
5a	BS Pickoff Beam Separation from ITM _x (margin after - 2R _{100ppm})	16 mm ^a	TBD	> 30 mm
5b	ITM _x Pickoff Beam Separation from BS (margin after - 2R _{100ppm})	65 mm	TBD	> 30 mm
5c	ITM _y Pickoff Beam Separation from BS (margin after - 2R _{100ppm})	31 mm	TBD	> 30 mm
6a	BS 1st ghost separation at the ITMs (margin after - 2R _{100ppm})	< 0, ITM _y ^a	TBD	> 30 mm
6b	ITM _x 1st ghost separation at the BS (margin after - 2R _{100ppm})	75 mm	TBD	> 30 mm
6c	ITM _y 1st ghost separation at the BS (margin after - 2R _{100ppm})	41 mm	TBD	> 30 mm
6d	RM 1st ghost separation at the BS (margin after - 2R _{100ppm})	< 0 ^c	TBD	> 30 mm
7	Beam line to baffle edge separation in the beam tube (backscatter limit)	281	TBD	> 200 mm
8	Length sensing noise due to optic wedge & pitch angle coupling (as a fraction of a FP surface contribution)	0.50, seismic 0.17, thermal	TBD	< 1, seismic < 0.28, thermal
9 to 13	constraints	all are met	TBD	see section 4

a. Need to revisit the BS maximum wedge angle criteria. BS pick-off separation would be increased with a larger BS wedge angle.

b. in the LIGO global coordinate system

c. Requires beam dumps on the BS suspension structure and a beam dump to catch the RM ghost beam reflection off of the BS, as in LIGO-1.

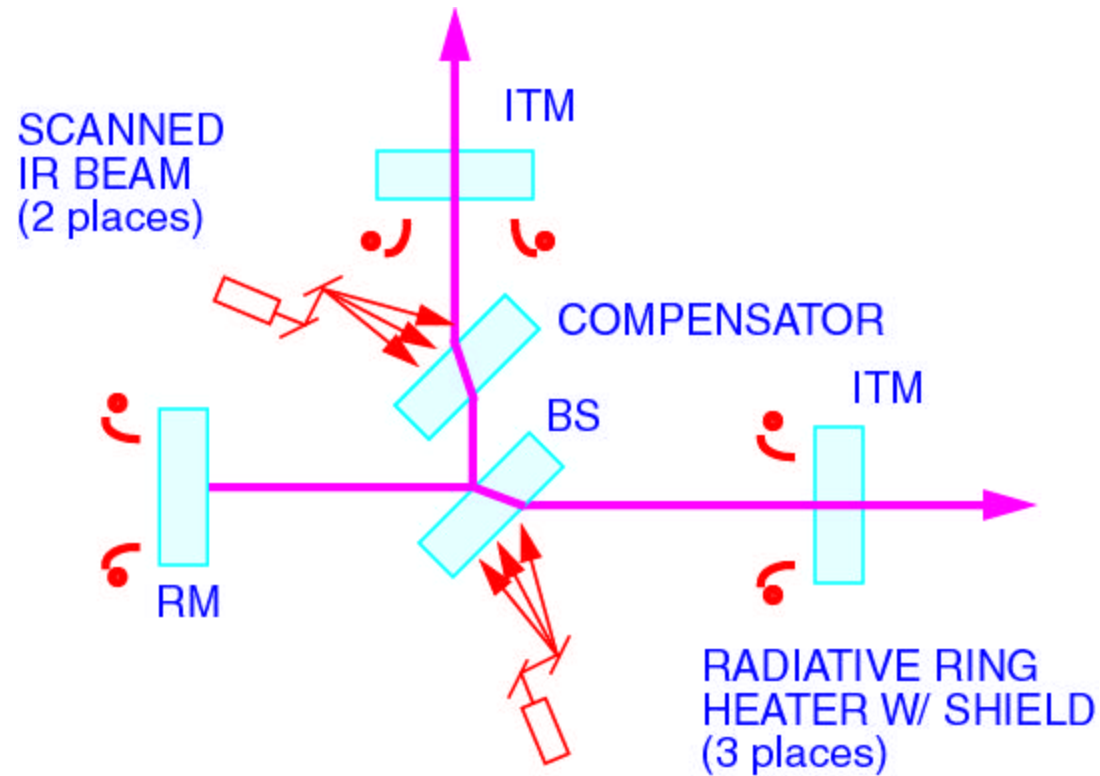


Optical Layout Issues, Limitations

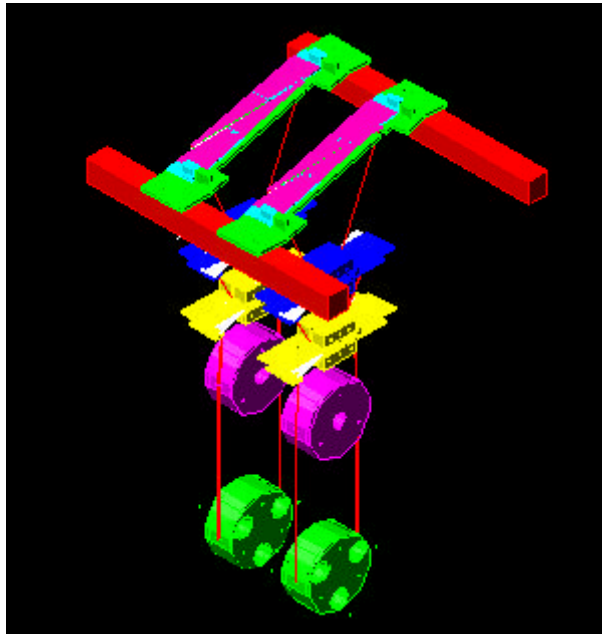
- Folded interferometer layout pending
- Active thermal compensation system?
 - » May require the addition of 1 or 2 phase plates in the PRC
 - » May benefit from putting the AR side of the PRM into the PRC for common mode corrector
- Single recycling cavity pick-off beam?
 - » 3 in initial LIGO: ITM_x, ITM_y, BS
 - » May require only one in advanced LIGO
- Non-wedged ITMs?
- Horizontal Wedges?
 - » May be possible if a single RC pick-off is sufficient
 - » May require (somewhat) larger SEI BSC tables
 - In fact, recommend going to maximum size square BSC SEI tables (limited by support tubes)
- Suspension planform dimensions?
 - » Layout is tight, need an estimate of SUS quad & triple base size to resolve



Active Thermal Compensation Potential Implementation

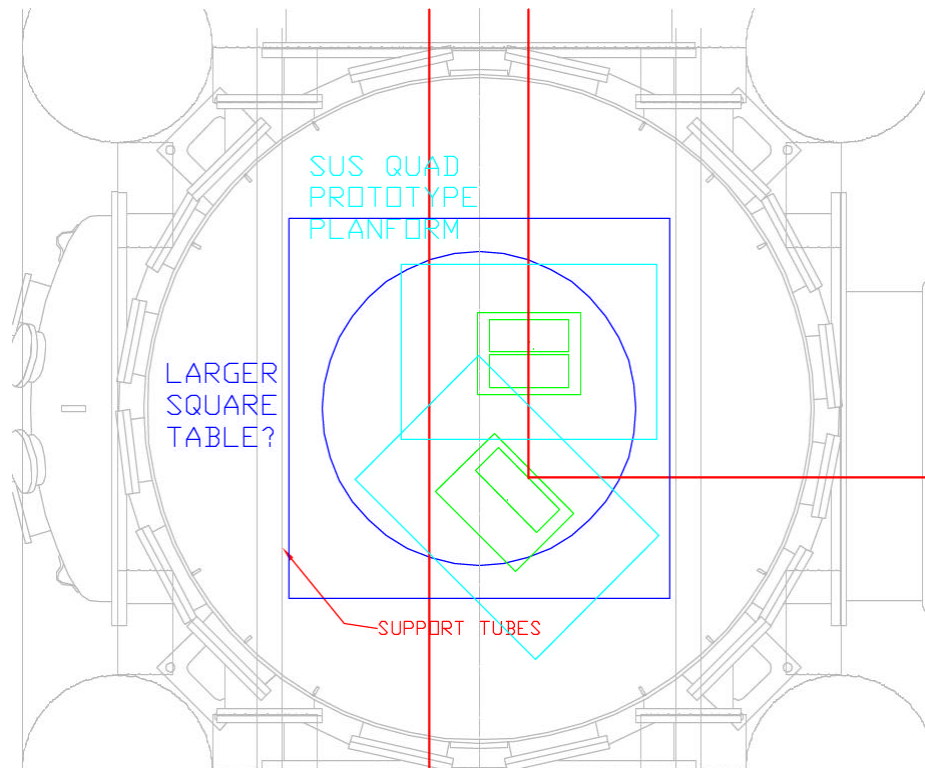


Suspension Table Area?



- Suspension

- » Quadruple prototype (shown at left)
- » Apparent planform dimensions: 700 X 1020 (lateral) mm
- » >> than assumed 330 X 420 (lateral) mm in layout





Generic Requirements & Standards for Subsystems

- Collection of (or pointers to) the general requirements and standards which apply to all (or most) subsystems
 - » Design standards
 - » Review requirements
 - » Documentation requirements
 - » Configuration controls
 - » Test requirements
 - » EMC requirements
 - » Vacuum compatible materials, processing
 - » Etc.



Generic Requirements & Standards for Subsystems

Table of Contents

1 Introduction

1.1 Purpose

1.2 Scope

1.3 Definitions

1.4 Acronyms

1.5 Applicable Documents

1.5.1 LIGO Documents

1.5.2 Non-LIGO Documents

2 Review Requirements

2.1 Design Reviews

2.2 Approval & Release Process

3 Configuration Control

3.1 Design Configuration Control

3.2 Interfaces Definition & Control

3.3 Physical Configuration Control

4 Documentation Requirements

4.1 Documentation Numbering & Electronic Filing

4.2 Design, Analysis & Test

4.2.1 Design Requirements Document (DRD)

4.2.2 Conceptual Design Document (CDD)

4.2.3 Preliminary Design Document (PDD)

4.2.4 Final Design Document (FDD)

4.2.5 Technical Design Memorandum

4.2.6 Test Plans and Procedures

4.2.7 Prototype Test Plans & Results

4.3 Fabrication and Process Specifications

4.4 Engineering Drawings and Associated Lists

4.5 Technical Manuals and Procedures

4.5.1 Procedures

4.5.2 Manuals

5 Testing Requirements

5.1 Form & Fit

5.2 Assembly

5.3 Function

5.4 Performance

5.5 Self-Test

5.6 Installation

6 Mechanical Characteristics & Standards

6.1 Materials and Processes

6.2 Welding and Brazing

6.3 Bolted Joints & Threaded Fasteners

6.4 Drawing Standards

6.5 CAD Standards

6.6 Interchangeability

6.7 Workmanship

6.8 Human Engineering

6.9 Preparation for Delivery

6.9.1 Preparation

6.9.2 Packaging

6.9.3 Marking



Generic Requirements & Standards for Subsystems

- 6.10 Assembly
- 6.11 Installation
- 7 Electrical Characteristics & Standards
- 7.1 Grounding & Shielding
- 7.2 EMI
- 7.3 Cabling
- 7.4 Connectors
- 7.5 Bus Architecture
- 7.5.1 EPICS control interface
- 7.5.2 Workmanship
- 7.5.3 Software Characteristics & Standards
- 7.6 TBD
- 7.7 GUI Human Engineering
- 8 Vacuum Compatibility Requirements
- 8.1 Form/Fit
- 8.2 Tribology
- 8.3 Materials
- 8.4 Qualification
- 8.5 Fabrication
- 8.6 Cleaning
- 9 Earthquake Requirements
- 9.1 Structural Integrity
- 9.2 Alignment
- 9.3 Operation

- 10 Quality Assurance
- 10.1 Quality conformance inspections
- 10.1.1 Inspections
- 10.1.2 Analysis
- 10.1.3 Demonstration
- 10.1.4 Similarity
- 10.1.5 Test
- 10.2 Quality Conformance Matrix
- 11 Reliability
- 11.1 Reliability Requirements
- 11.2 Reliability Testing
- 12 Maintainability
- 13 Transportability
- 14 Safety



Generic Requirements & Standards for Subsystems

- Basically the same as initial LIGO
 - » Fill omissions, provide clarifications to initial LIGO requirements
 - » Added requirements:
 - CAD Standards: SolidWorks & 3D preferred
 - AutoCad & 2D may be deemed acceptable on a case by case basis
 - Earthquake limit for seismic & suspension survival & alignment retention
 - For controlled documents: Source file archival required (in addition to Adobe AcroBat format)
 - All piece parts must be marked with part # (= drawing # - revision S/N)
- Status of LIGO-E010123:
 - » Outline completed
 - » Content growing
 - » Comments & suggestions welcome



LIGObservatory Environment

David Shoemaker

3 July 2001



Purpose

- An overview of the environment at the LIGO sites relevant to the design and operation of the instruments
 - » Will provide pointers to additional sources of information
- Document is organized by the quantity measured, dealing first with one site (LLO) and then the other (LHO)
- The scope of this document covers those aspects of the environment which directly relate to the instrument design and performance
 - » Criterion: if it changes during operation, the performance of the interferometer might change
 - » Should be complementary to the 'Generic Requirements for Detector Subsystems' and the two should span the space



Long-term goals

Document should

- consist of standard plots for similar measurements at different times and places and between sites
- give pointers to data for the plots to allow quantitative analysis, and give fits and approximations for estimates
- carry references to the measurements
- be updated regularly to indicate the latest information on the measured quantities

- Notion: create web sites for each observatory to carry data, additional information
 - » Maintain a single 'paper' document of top-level current information

...clearly, some work yet to do.

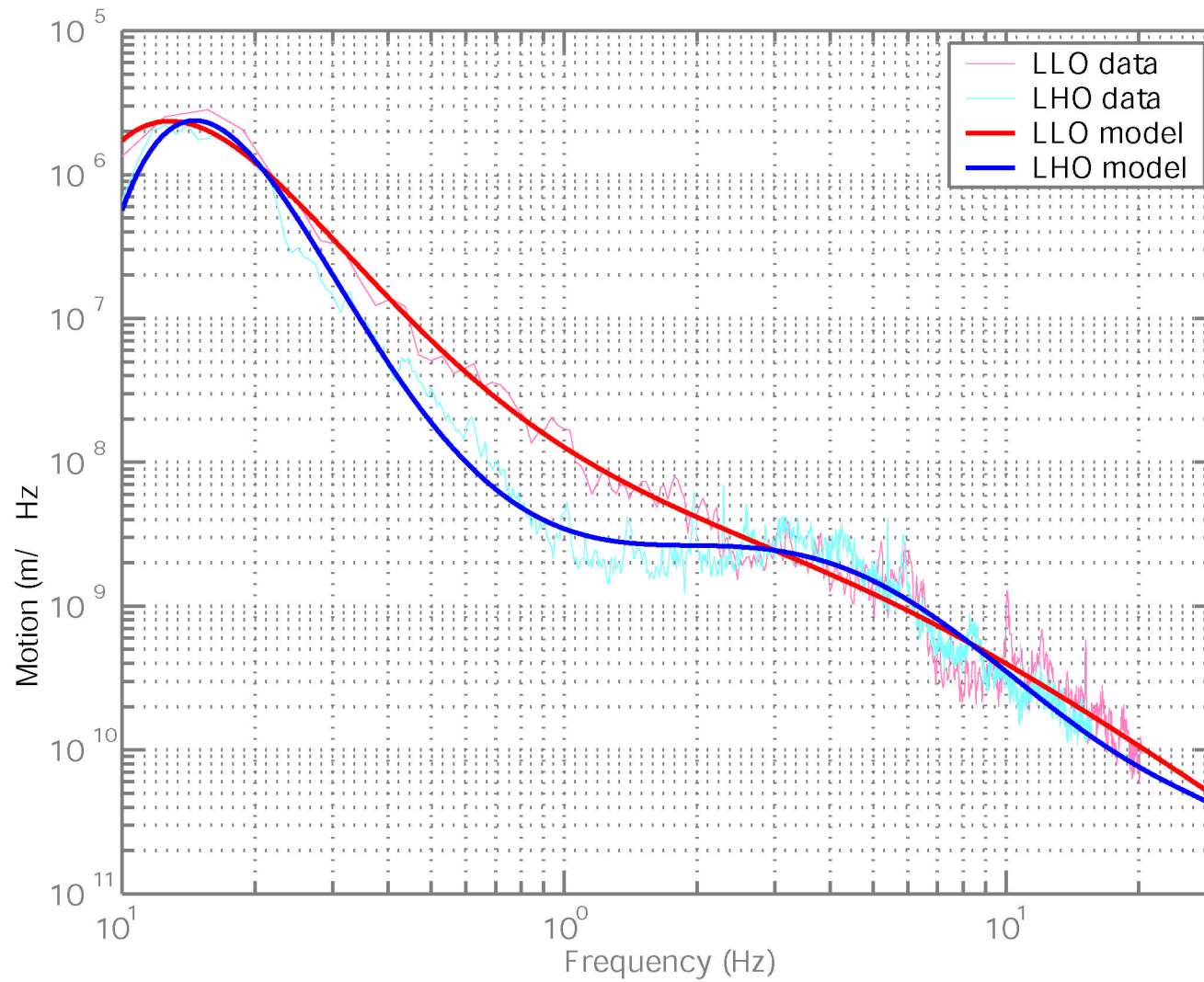


How has, how will this happen?

- Growing base of information: Schofield, Giaime, Daw, Johnson, Chatterji, Marka, ...
- LSC Detector Characterization group: Riles et alia
- Upper Limit characterization effort
- Continuing attention from the Detector systems group



'Standard' seismic spectrum

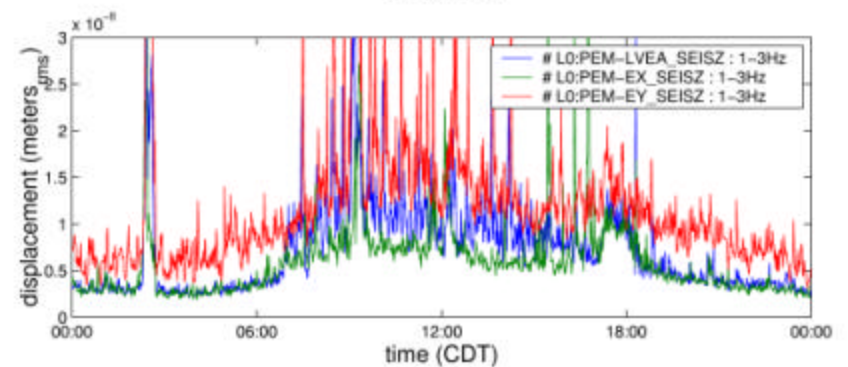
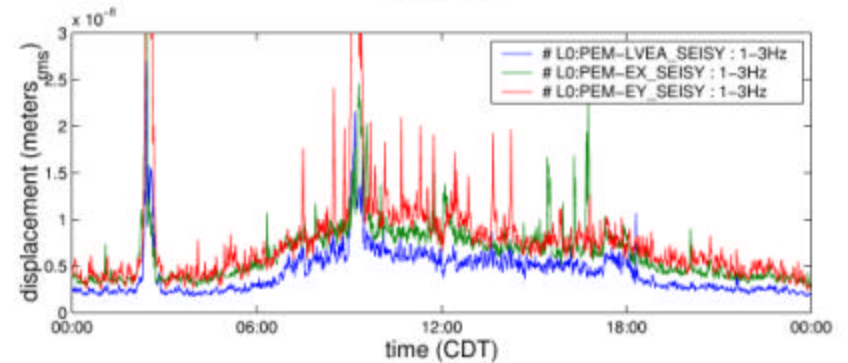
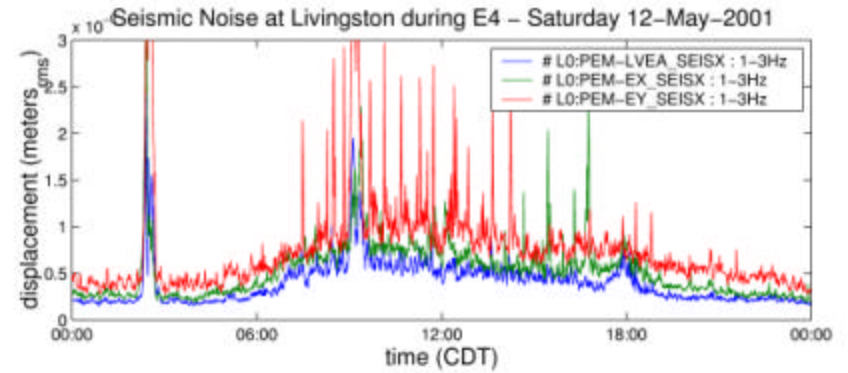
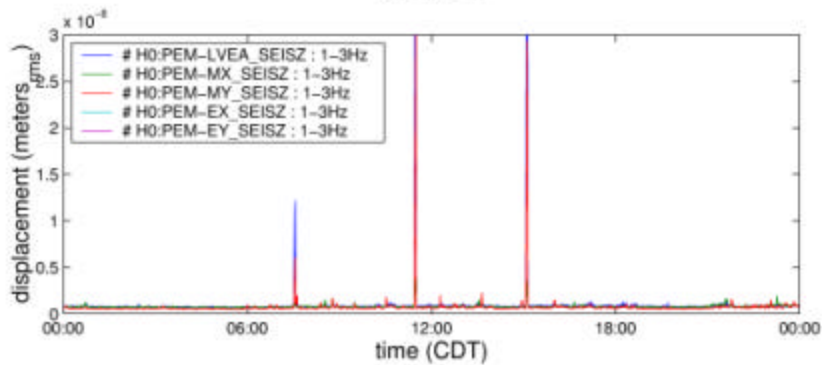
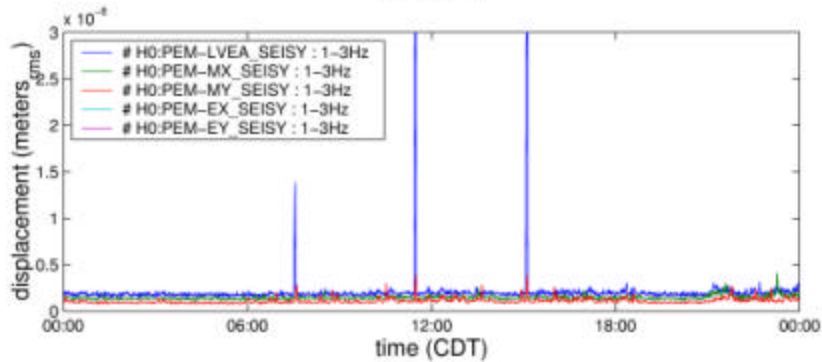
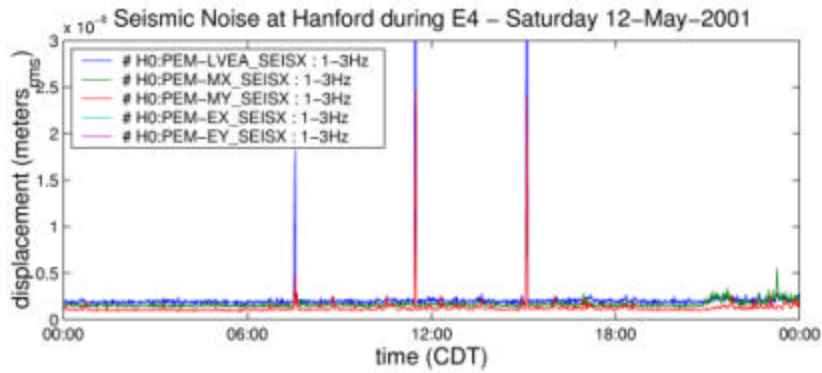




Seismic variability

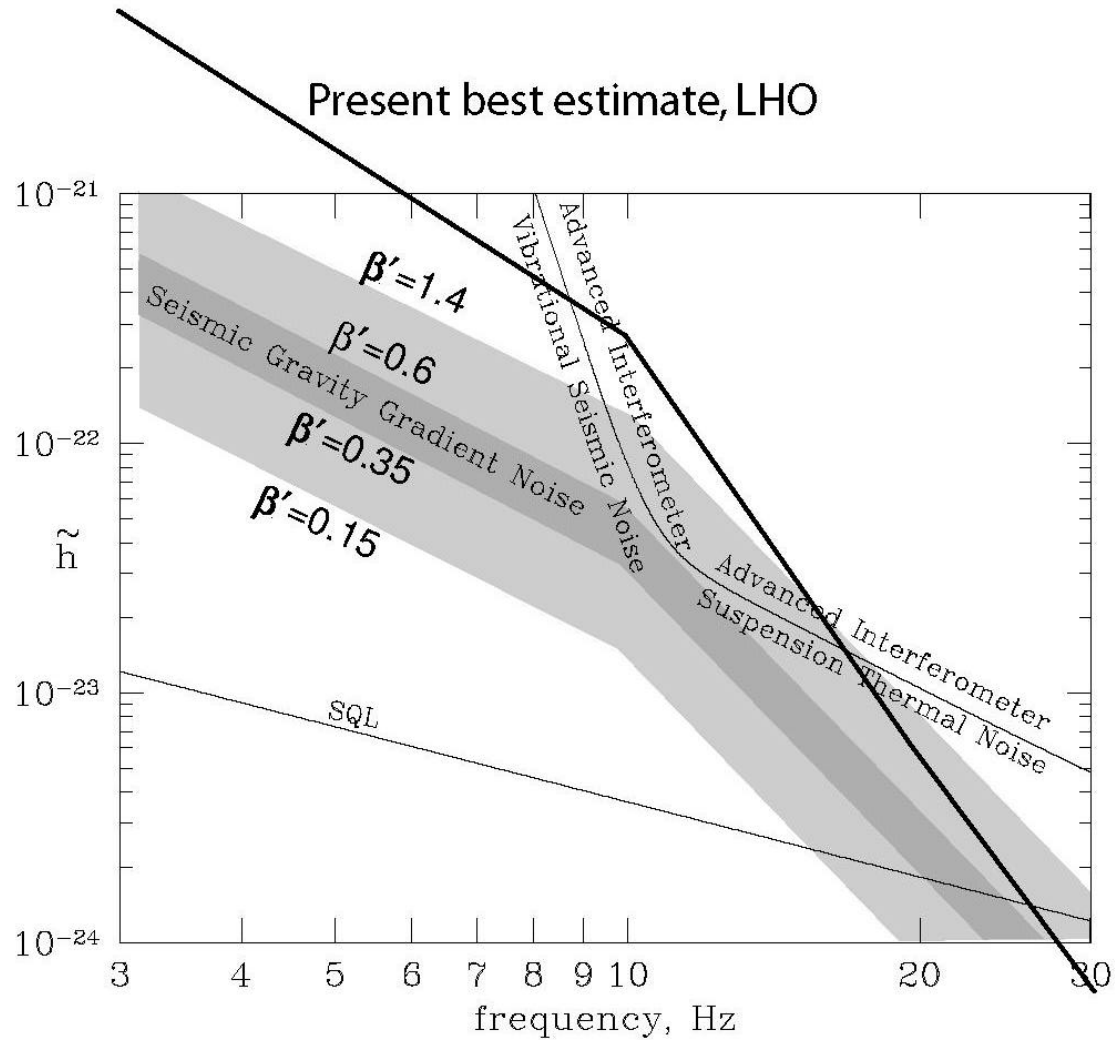
LHO

LLO



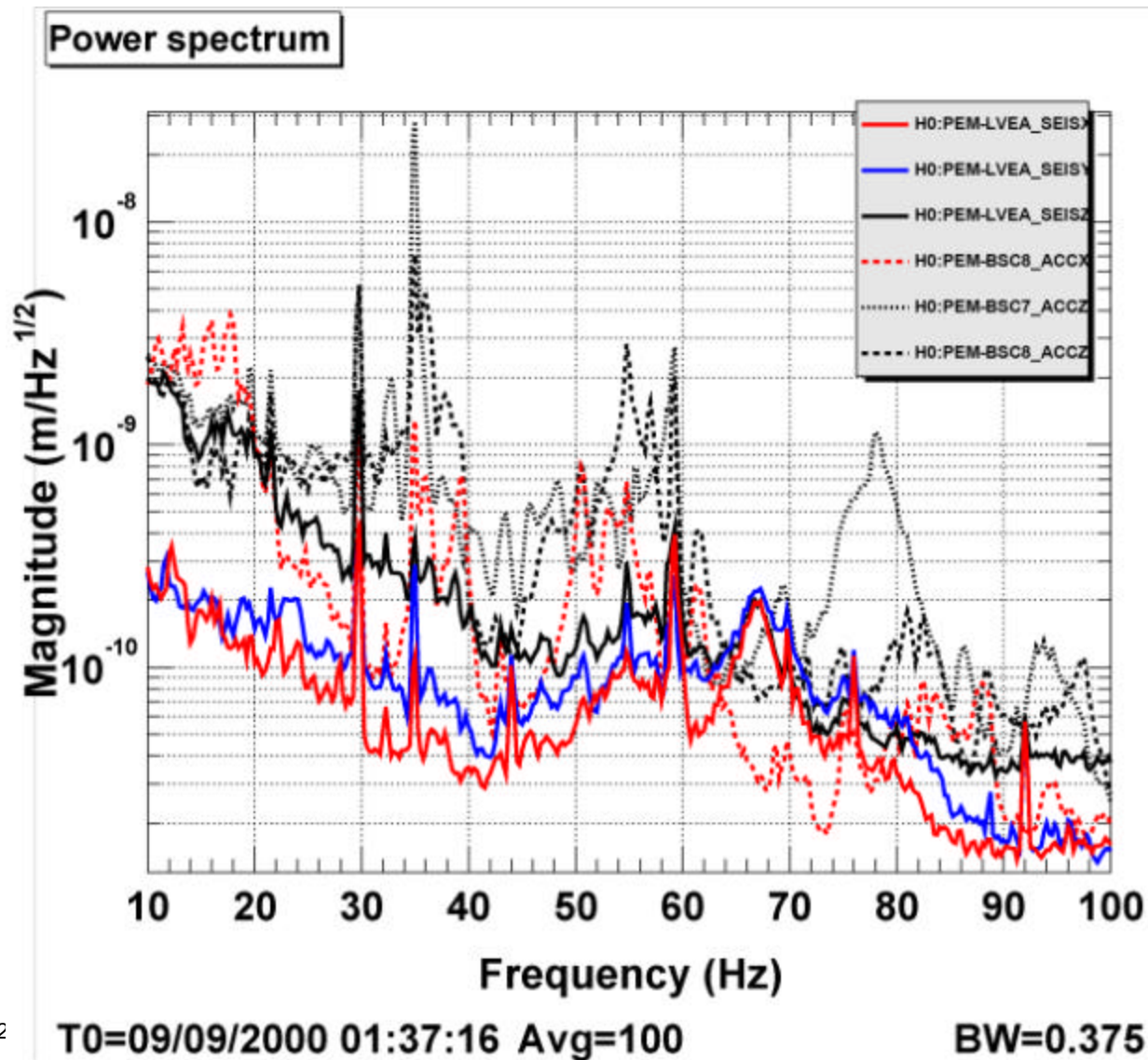


Newtonian background



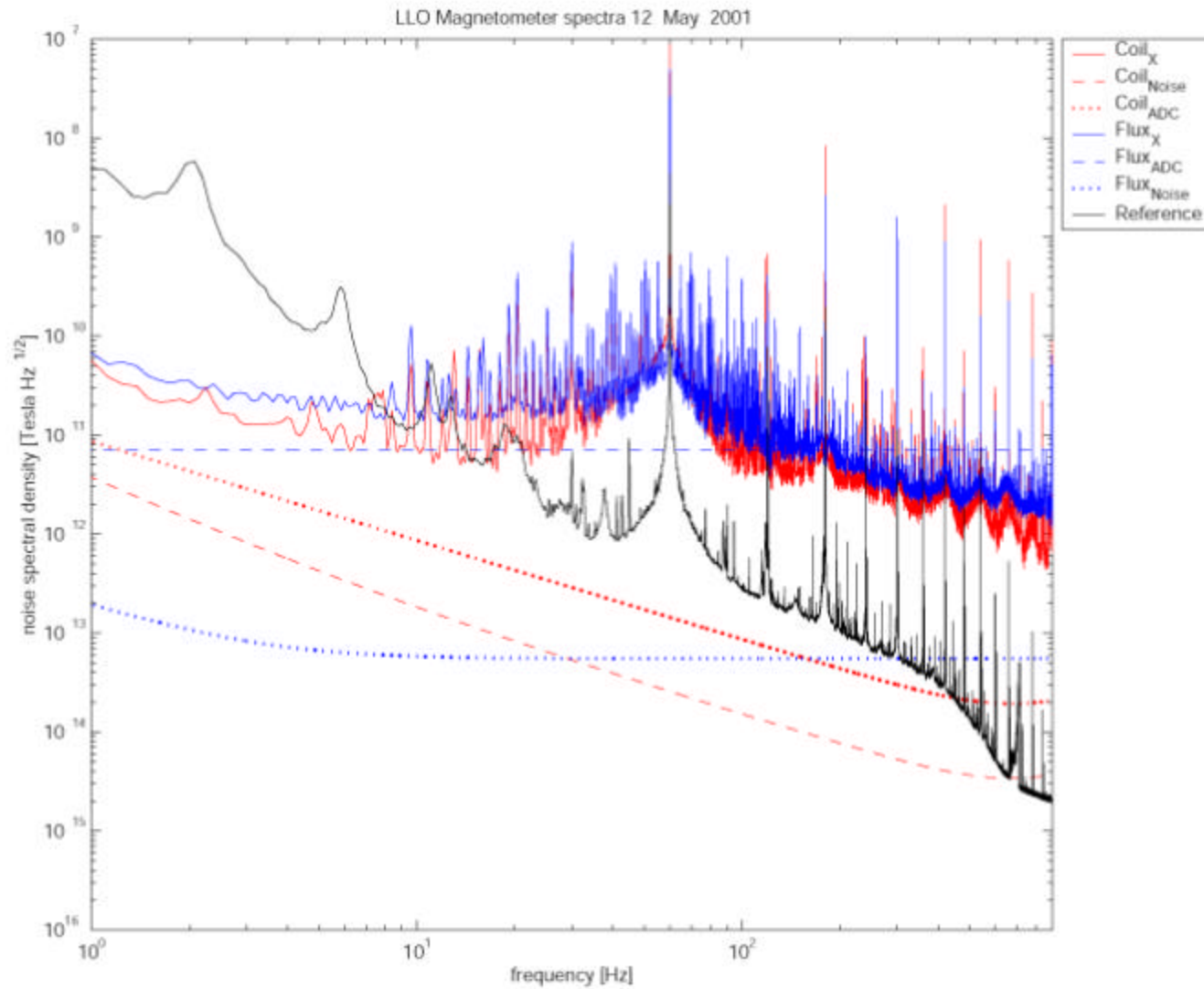


Spectrum at Seismic Supports



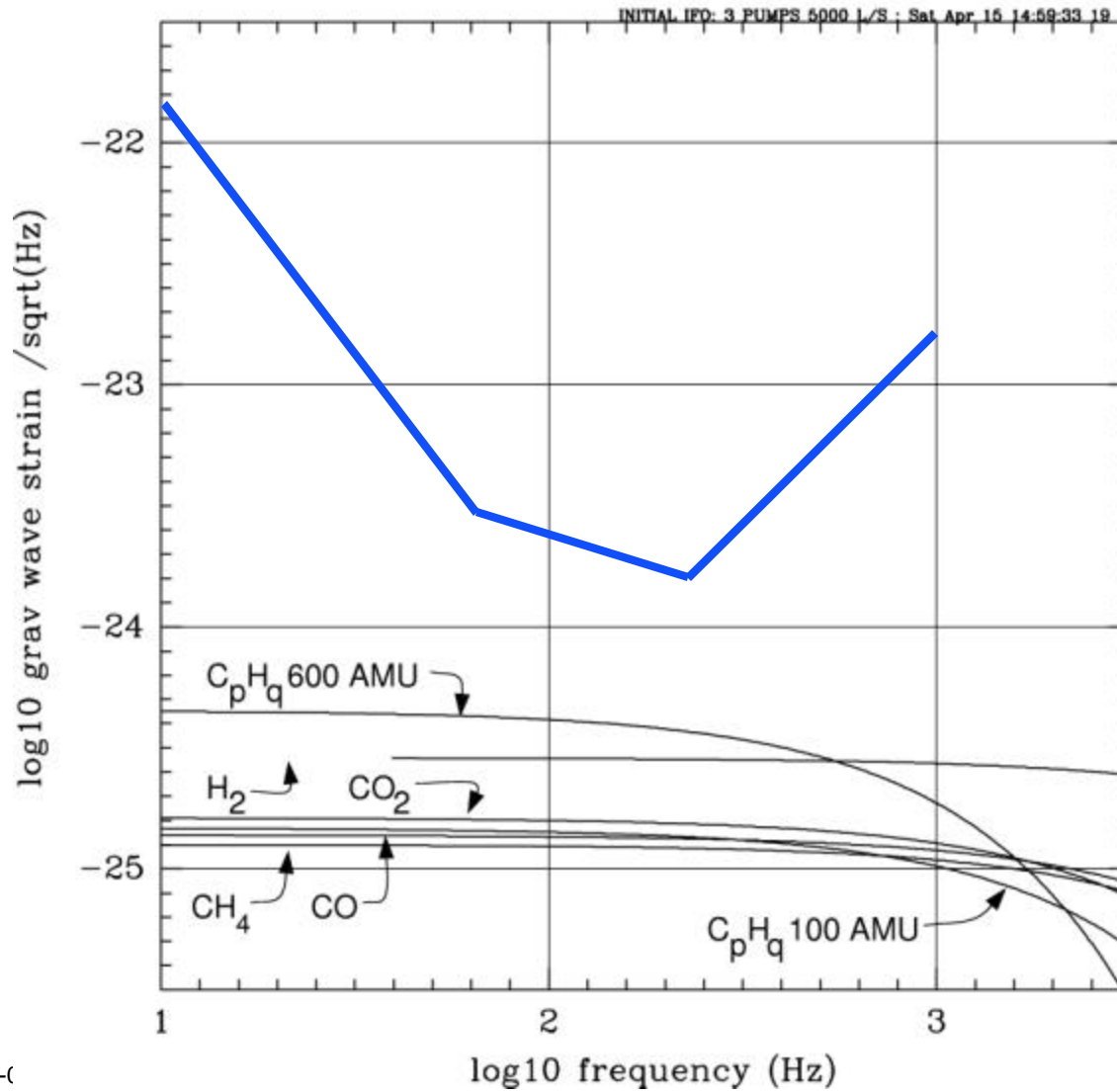


Magnetic fields





Residual gas





So...

- Work to do to finish an initial round of collecting existing data
- On-going work to maintain 'environmental references' for operation, analysis, design



Summary & Plan

- Systems design: resolution of open issues
 - » Sapphire vs fused silica
 - Hinges mostly on success of sapphire development
 - Selection scheduled for mid-20022
 - » Readout scheme
 - Sensitivity analysis in progress, results are weeks-months away
 - Bench tests of dc readout
 - Glasgow, 40m tests
 - » Optics modeling
 - Need to specify requirements for optics production & active thermal compensation
 - Meeting held at MIT in May to define modeling needs and start a concentrated effort with the FFT and Melody models
- Data analysis
 - » Begin working with A Lazzarini to to scope AdLIGO data analysis



Development Plan

- R&D including Design through Final Design Review
 - » for all long lead or high risk subsystems
 - » LIGO Lab contracts and funds large R&D equipment
 - » Subsystem development plans described at the last LSC meeting ([G010082](#))
- Construction Phase Proposal
 - » Major Research Equipment (MRE) funding
 - » includes 'prosaic' design efforts
 - » Proposal due this fall
- Isolation Test Bed (LASTI)
 - » full scale, integrated suspensions & seismic Isolation testing
 - » in-chamber assembly & installation procedure check-out
 - » possible first article test bed

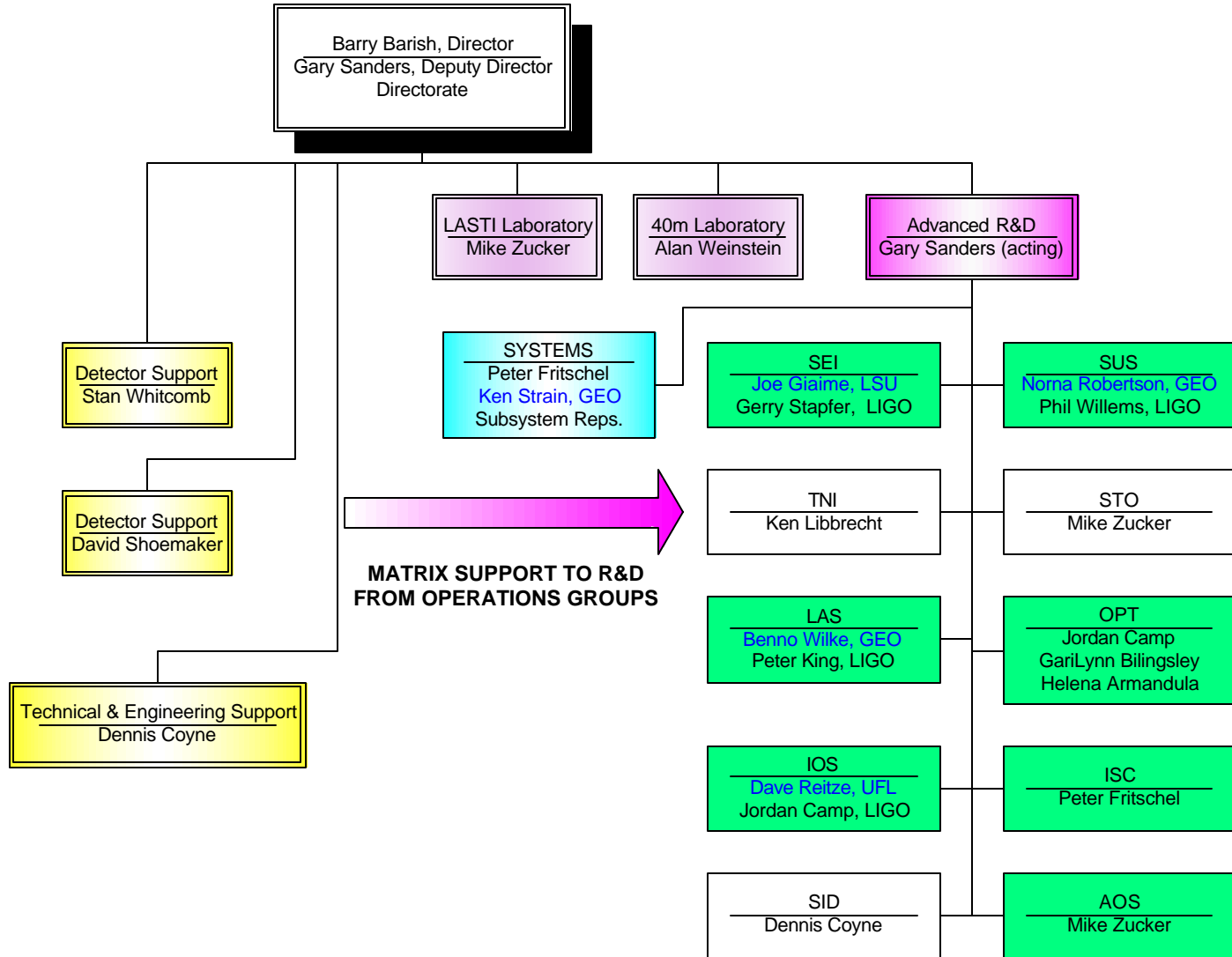


Development Plan (continued)

- Controls Test Beds (GEO 10m and LIGO 40m)
- High Power Test Facilities
 - » Component level testing by UFL at LLO
 - » Gingin High Power Interferometer Test Facility
- Integrated Systems Tests
 - » Pre-Stabilized Laser (PSL), Input Mode Cleaner, Suspensions and Seismic Isolation Test at LASTI
 - » Integrated Servo Control Electronics Testing at the LIGO 40m Lab
 - » Possibly early End Test Mass Suspension & Seismic Isolation replacement at a LIGO Observatory



Organization

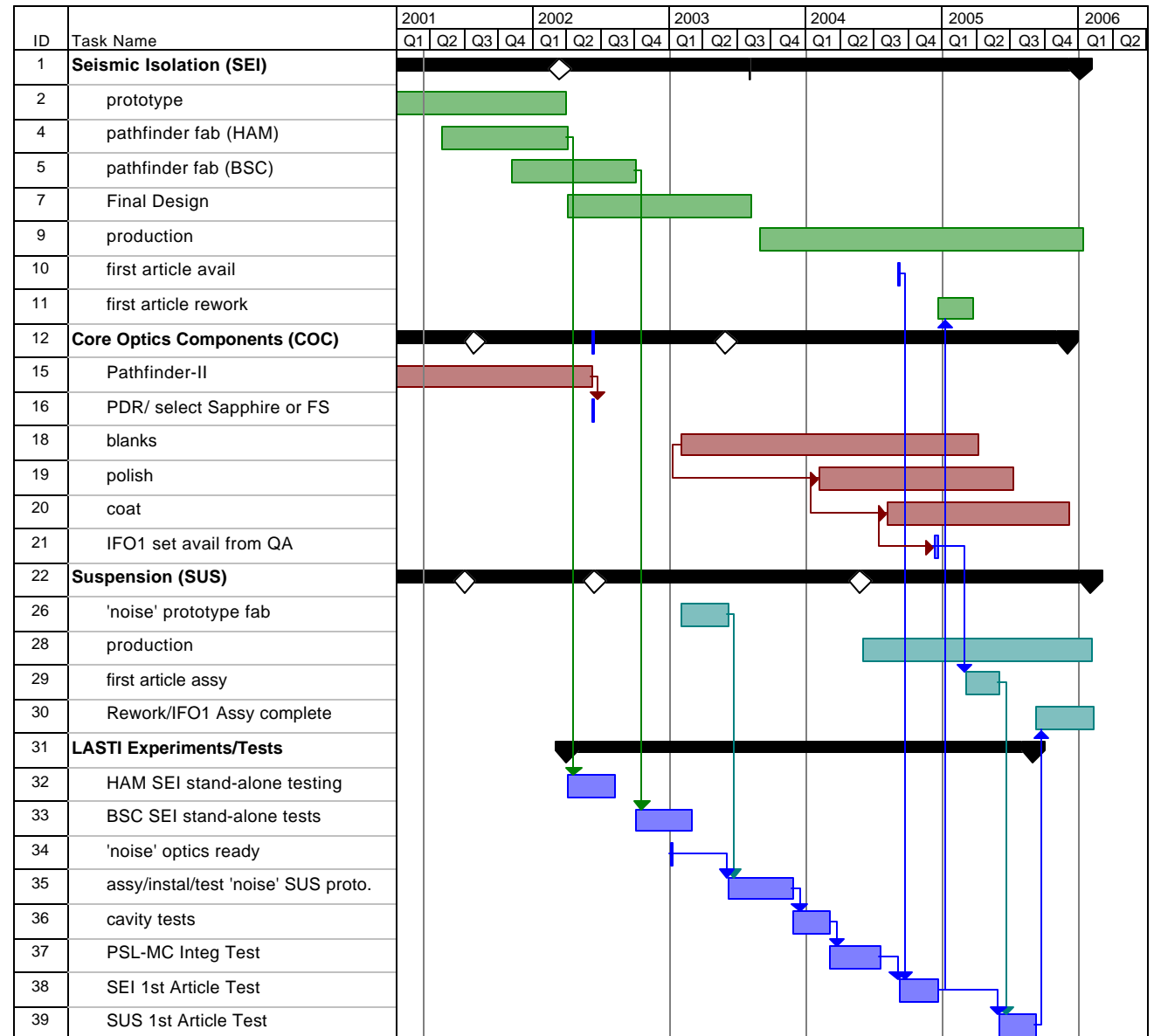


MATRIX SUPPORT TO R&D FROM OPERATIONS GROUPS



LASTI & Supporting Subsystem Integrated Schedule

- Subsystem schedules are being integrated into a project plan
- Requirement reviews are already late
- Testbeds (LASTI, 40m, Gingin) are metronomes for the subsystems
- NSF funding limits may defer COC long lead procurement





Installation & Commissioning Plan

- Minimum of a 1 year of Integrated Science Run Before a Major Upgrade
- Schedule to be Coordinated with International GW Observatories to Keep ≥ 2 Detectors Operating
- Start Installation Only When Production & Assembly Pipeline Will Not Limit the Installation Schedule
- Install One Advanced LIGO Interferometer and Incorporate Lessons Learned into the Subsequent Advanced Interferometers (time lag of ~ 18 months)
- Plan to start installation in early 2006