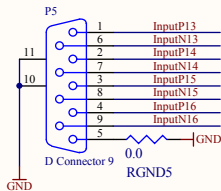
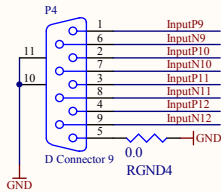
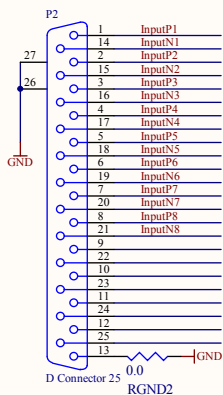
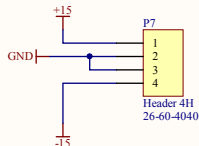
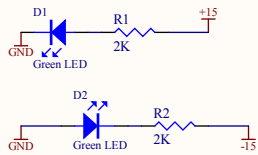
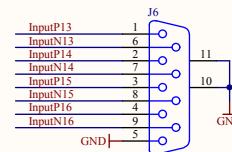
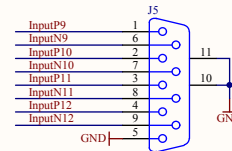
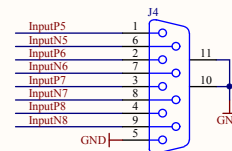
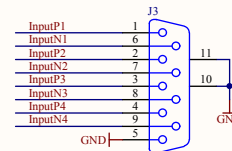


Outputs to Modules



Inputs from Filters



Title		aLIGO HEPI AI Chassis Adapter Board		LIGO Project California Institute of Technology Massachusetts Institute of Technology		LIGO [®]	
Size: B	DCC Number: D1100202	SCH / PCB Revision: v1	Engineer: B.Abbott	Date: 2/2/2011		Time: 4:12:31 PM	
File: C:\restored\Ben\HEPI\New HEPI\ALIGO HEPI AI Interface\HEPI AI Int.Sch.Doc				Sheet 1 of 1			

