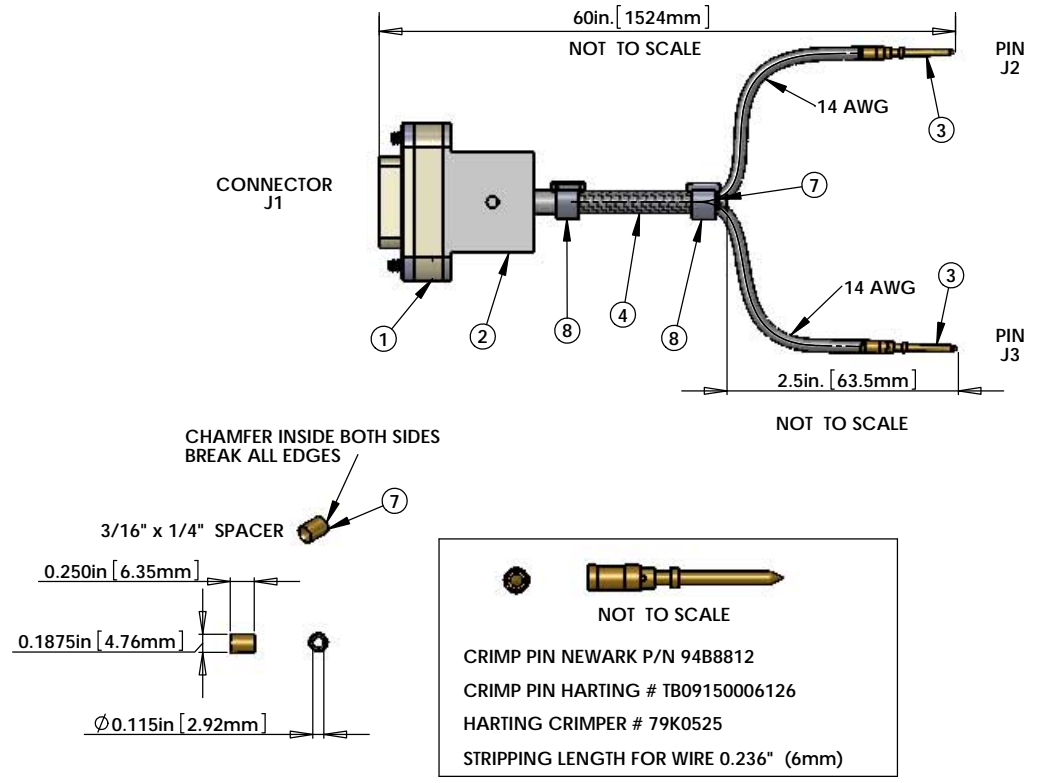
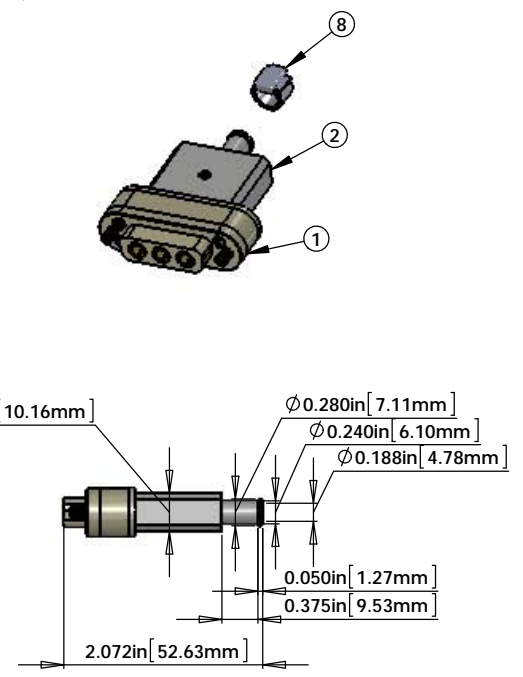
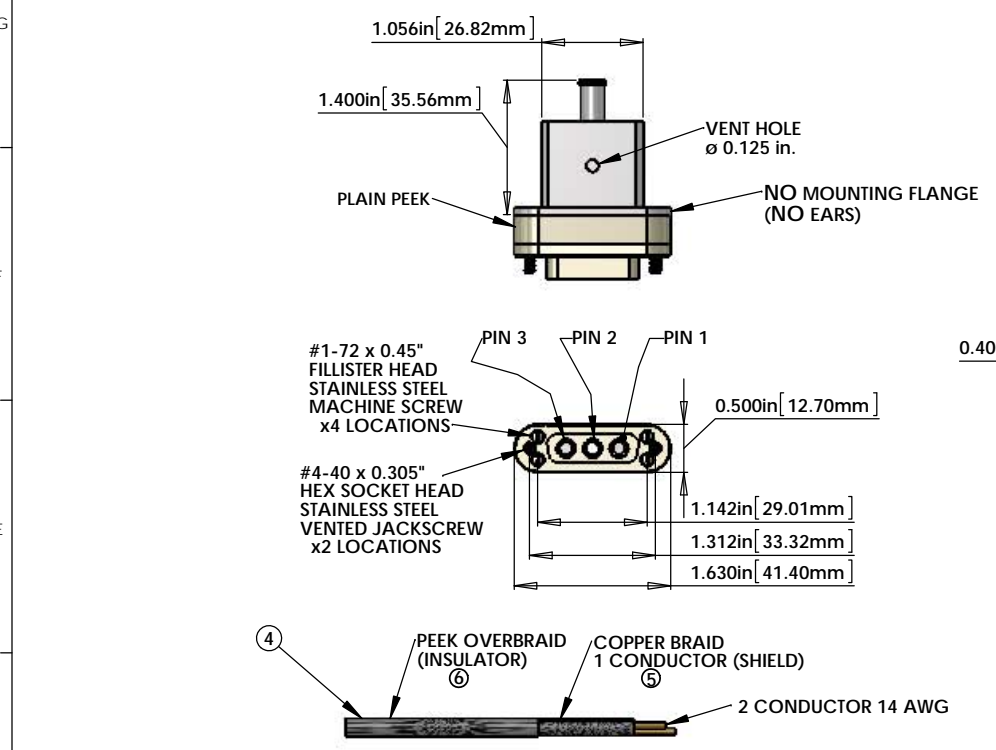


- NOTES CONTINUED:
- SCRIBE, ENGRAVE, OR MECHANICALLY STAMP (NO INKS OR DYES) DRAWING PART NUMBER AND REVISION ON NOTED SURFACE FOLLOWED ON THE NEXT LINE BY A THREE DIGIT SERIAL NUMBER. SERIAL NUMBERS START AT 001 FOR THE FIRST ARTICLE AND PROCEED CONSECUTIVELY. USE .07" HIGH CHARACTERS. EXAMPLE: DXXXXX-VY, S/N 001. VIBRATORY TOOL MAY BE USED.
 - APPROXIMATE WEIGHT = X.XXX LB.
 - MACHINE ALL SURFACES TO REMOVE OXIDES AND MILL FINISH. USE OF ABRASIVE REMOVAL TECHNIQUES IS NOT ALLOWED. REFER TO LIGO-E0900364
 - ALL PARTS SHALL BE MANUFACTURED IN ACCORDANCE WITH LIGO SPECIFICATION E0900364.
 - ALL HELI-COIL HOLES TO BE PREPARED ACCORDING TO EMHART HELI-COIL PRODUCT CATALOG, HC2000, REV 4.

NOTES 9, 10, 13 and 14 DO NOT APPLY TO THIS PART



NOT TO SCALE
 CRIMP PIN NEWARK P/N 94B8812
 CRIMP PIN HARTING # TB09150006126
 HARTING CRIMPER # 79K0525
 STRIPPING LENGTH FOR WIRE 0.236" (6mm)

ITEM NO.	PART NUMBER	DESCRIPTION	QTY.	LENGTH*
1	TICOR #TS0148-15C003BS1-188 OR EQUIVALENT**	DB3 FEMALE CONNECTOR (J1) FOR UHV (PEEK)	1	
2		DB3 CONNECTOR BACK SHELL (NO EARS) FOR UHV (STAINLESS) WITH Ø0.188" i.d. PORT	1	
3	94B8812	CRIMP PINS (J2, J3) HARTING # 09 15 000 6126 NEWARK # 94B8812	2	
4	C1	2 COND. (2 WIRES + SHIELD) CABLE WITH 5 COPPER BRAID (SHIELD) 6 AND PEEK OVERBRAID	1	60in.
5	CONTINENTAL PART #24x3x40BC	COPPER BRAID - CONTINENTAL CORDAGE PART # 24x3x40BC	1	
6	PEEK BRAID PART #6759	PART #6759 MANUFACTURED WITH ZEUS 0.016" BLACK PEEK DRAWN MONOFILAMENT	1	
7	SPACER	3/16" SPACER 1/4" LENGTH 0.115" i.d.	1	
8	GLENAIR # 600-052 or BAND-IT # A10086	GLENAIR # 600-052 STANDARD BRAID CLAMP or BAND-IT PART # A10086 (0.240" WIDE) ("BAG OF 100" # A10089)	2	

* NOTE: THE OVERALL LENGTH IS MEASURED FROM PIN TIP (3 PIN) TO PIN TIP (CRIMP PINS) OF THE CABLE. THE OTHER MEASUREMENT IS SPACER TO PIN TIPS (CRIMP PINS). USE WHATEVER LENGTH IS NECESSARY FOR THE INTERNAL WIRING OF THE CONNECTORS AND STRIP LENGTH TO ACHIEVE THE CORRECT OVERALL LENGTHS.
 ** NOTE: SEE THE "TICOR CONNECTOR PART NUMBER BUILDER" DCC#D1000219 FOR DETAILS ON THIS PART NUMBER.

- NOTES: (UNLESS OTHERWISE SPECIFIED)
- MATERIAL:
 - CONNECTOR SHELL - PEEK VICTREX 450GL30.
 - BACKSHELL - STAINLESS STEEL WITH VENT HOLE.
 - CONTACTS - BERYLLIUM COPPER ALLOY C17300, 0.000050 MIN. GOLD OVER NICKEL.
 - HARDWARE: STAINLESS STEEL, PASSIVATED.
 - PEEK BRAID - PEEK VICTREX GRADE TDS-450CA30 CARBON LOADED - SUPPLIED BY LIGO.

- CABLE 2 COND. 14 AWG, (STRANDED) WITH 2 LAYERS OF KAPTON TAPE. OVERALL 40AWG COPPER BRAID 50% COVERAGE - SUPPLIED BY LIGO. OVERALL PEEK BRAID MIN. 50% COVERAGE. OVERALL CABLE O.D. WILL BE 0.240 IN.
- CONNECTORS WILL BE SUPPLIED WITH HARDWARE. SCREWS SHOULD BE THE PROPER LENGTH FOR MATING.

DIMENSIONS ARE IN		TOLERANCES:		ANGULAR ± °	
XX ±		XXX ±		Material <not specified>	
MATERIAL		FINISH		NEXT ASSY	
Material <not specified>		μinch			

NOTES AND TOLERANCES: (UNLESS OTHERWISE SPECIFIED)

- INTERPRET DRAWING PER ASME Y14.5-1994.
- REMOVE ALL SHARP EDGES, .005-.015. FOR MACHINED PARTS. ROUND ALL EDGES APPROXIMATELY R.02 FOR SHEET METAL PARTS.
- DO NOT SCALE FROM DRAWING.
- ALL MACHINING FLUIDS MUST BE FULLY SYNTHETIC, FULLY WATER SOLUBLE AND FREE OF SULFUR, SILICONE, AND CHLORINE.

LIGO CALIFORNIA INSTITUTE OF TECHNOLOGY MASSACHUSETTS INSTITUTE OF TECHNOLOGY

PART NAME		CUSTOM CABLE SPECIFICATION V3A-60	
DESIGNER	B. ABBOTT	JUN/29/2012	SIZE
DRAFTER	E. BROWN	JUN/29/2012	DWG. NO.
CHECKER			D1100151
APPROVAL			REV. v3
SCALE: 1:1		PROJECTION:	
		SHEET 1 OF 1	

CABLE NAME	WIRE NAME	WIRE SIZE	LENGTH*	FROM	TO
V3A-60				J1 PIN 1	END OF CABLE
	SHIELD	COPPER BRAID			
	W1	14 AWG	60in.	J1 PIN 2	J2
	W2	14AWG	60in.	J1 PIN 3	J3

STANDARD USE FOR THIS CABLE		
SUBSYSTEM	AIR/VAC	STANDARD USE
SEI	IN-VAC	FROM TABLE TO ISI ACTUATOR

