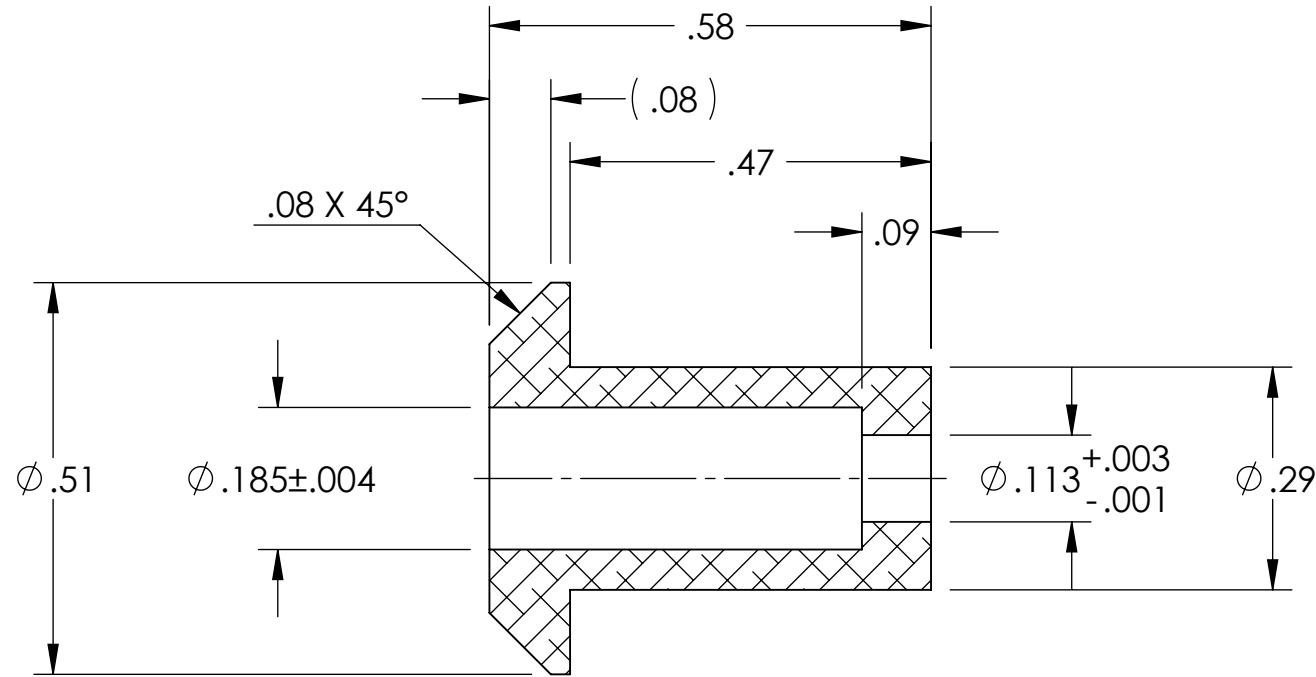
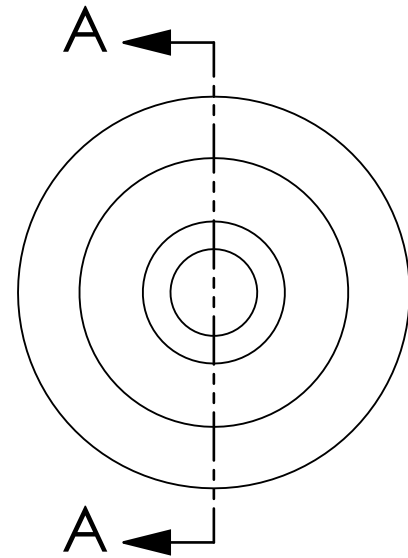
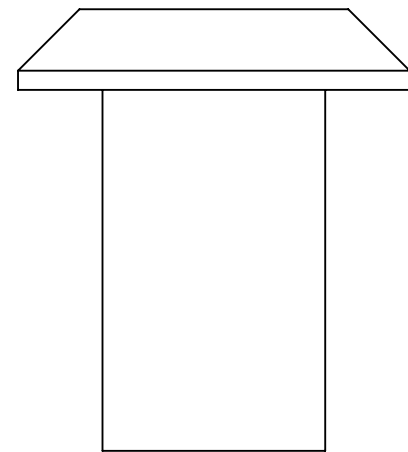
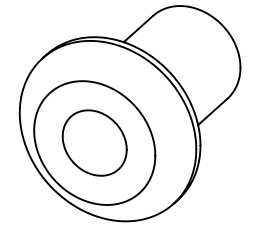


NOTES CONTINUED:
 5. BAG AND TAG PARTS SEPARATELY WITH THEIR DRAWING PART NUMBER, REVISION, AND SERIAL NUMBER. SERIAL NUMBERS START AT 001 (UNLESS OTHERWISE SPECIFIED) FOR THE FIRST ARTICLE AND PROCEED CONSECUTIVELY.
 EXAMPLE:
 DXXXXXX-vY
 S/N-001
 6. APPROXIMATE WEIGHT = .003 lb [1.5 g].
 7. MACHINE ALL SURFACES TO REMOVE OXIDES AND MILL FINISH. USE OF ABRASIVE REMOVAL TECHNIQUES IS NOT ALLOWED.
 8. ALL PARTS SHALL BE MANUFACTURED IN ACCORDANCE WITH LIGO SPECIFICATION E0900364.
 9. ALL MATERIAL IS TO BE VIRGIN MATERIAL (i.e. NO WELD REPAIRS OR PLUGS UNLESS APPROVED IN ADVANCE IN WRITING BY LIGO). REFER TO LIGO SPECIFICATION E0900364.

REV.	DATE	DCN #	DRAWING TREE #
v1	24 JAN 2011	E1100062-v1	-
-	-	-	-



SECTION A-A



D1100114 TMS Telescope Secondary Mirror Clamp, PART PDM REV: X-003, DRAWING PDM REV: X-010

NOTES AND TOLERANCES: (UNLESS OTHERWISE SPECIFIED)				LIGO CALIFORNIA INSTITUTE OF TECHNOLOGY MASSACHUSETTS INSTITUTE OF TECHNOLOGY		PART NAME	
DIMENSIONS ARE IN INCHES TOLERANCES: .XX ± .01 .XXX ± .005 ANGULAR ± 1.0°				1. INTERPRET DRAWING PER ASME Y14.5-1994. 2. REMOVE ALL SHARP EDGES, R.02 MIN. 3. DO NOT SCALE FROM DRAWING. 4. ALL MACHINING FLUIDS MUST BE FULLY SYNTHETIC, FULLY WATER SOLUBLE AND FREE OF SULFUR, SILICONE, AND CHLORINE.		TMS TELESCOPE SECONDARY MIRROR CLAMP	
MATERIAL 6061-T6 Al		FINISH 63 μinch Ra		SYSTEM ADVANCED LIGO NEXT ASSY D1002210		SUB-SYSTEM AOS	
DESIGNER K. MAILAND 21 JAN 2011		DRAFTER M. MILLER 12/17/2010		CHECKER		APPROVAL	
DIMENSIONS ARE IN INCHES				SCALE: 4:1		PROJECTION:	
DIMENSIONS ARE IN INCHES				SIZE DWG. NO. B		D1100114	
DIMENSIONS ARE IN INCHES				SHEET 1 OF 1		REV. v1	