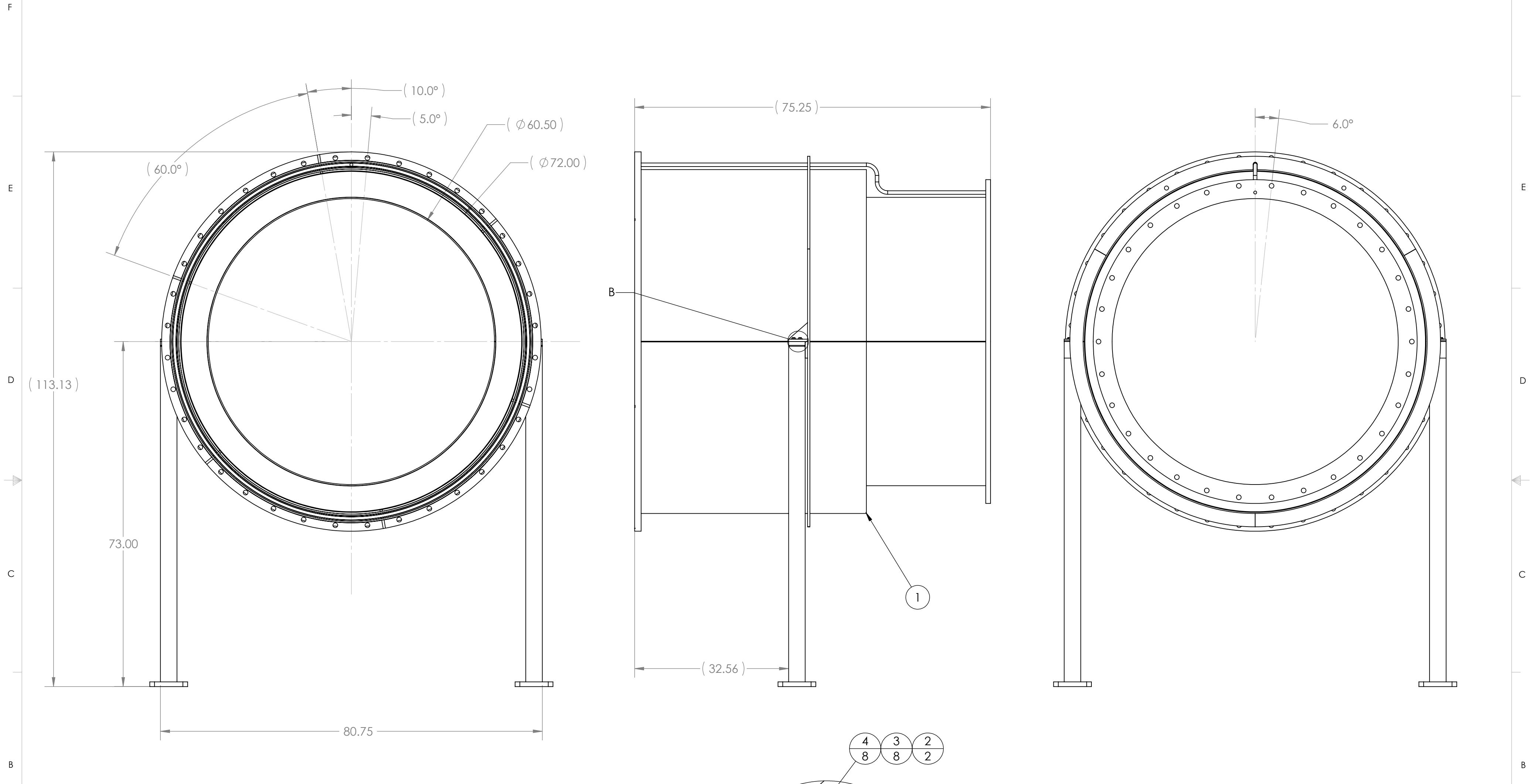


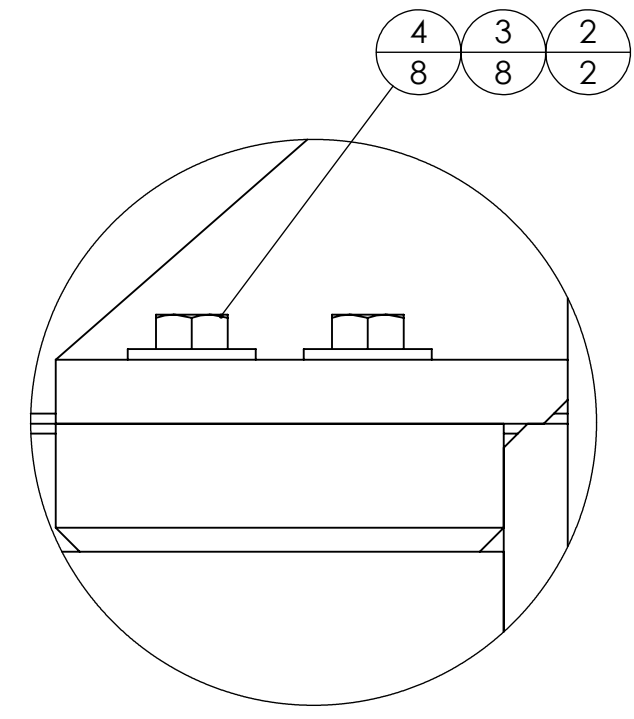
PROPRIETARY AND CONFIDENTIAL  
 THIS DRAWING IS THE SOLE PROPERTY OF  
 THE GNB CORPORATION. ANY  
 REPRODUCTION IN PART OR AS A WHOLE  
 WITHOUT THE WRITTEN PERMISSION OF  
 THE GNB CORPORATION IS PROHIBITED.

REVISIONS				
ZONE	REV.	DESCRIPTION	DATE	APPROVED
	A	RELEASED TO PRODUCTION	8/23/2010	MKM2



NOTES:

1. VACUUM SEALING SURFACE
2. CLEAN PER QP1750-D2
3. BAKEOUT PER QP1750-A6
4. LEAK CHECK PER QP1750-A7
5. KEEP FREE OF CONTAMINATION. ANY CONTAMINATION MUST BE REMOVED WITH A CO2 SPRAY IMMEDIATELY.
6. VERIFY CLEANLINESS PER QP1750-A3
7. PREPARE FOR SHIPPING QP1750-R6
8. ALL CONFLAT FLANGES ARE NON-ROTATABLE WITH THRU HOLES.



ITEM NO.	PART NUMBER	DESCRIPTION	QTY.
1	114313-00WS	WELDMENT, ADAPTER, A-18	1
2	114443-00WM	STAND, A-18	2
3	91525A136	(McM) WASHER, FENDER, 3/8 ID, 1" OD	8
4	C06C0220S	HHCS, 3/8-16, 1.38 LG	8

MATERIAL: AISI 304/AISI 304L DUAL CERT PER SA-240

UNLESS OTHERWISE SPECIFIED:  
 DIMENSIONS ARE IN INCHES  
 TOLERANCES: FINISH  
 ANGULAR: ±0°30'  $\sqrt{25}$   
 .XX ±.03  
 .XXX ±.005  
 UNSPECIFIED FILLETS: R.015  
 BREAK EDGES .010x45°  
 REMOVE ALL BURRS

WEIGHT: 2608.18#

APPROVALS: DATE  
 DRAFTER MKM2 7/30/10  
 CHECKER ER 8/18/10  
 ENGINEER MKM2 7/30/10

GNB CORPORATION  
 SCIENTIFIC AND INDUSTRIAL EQUIPMENT  
 3200 DWIGHT RD. SUITE 100  
 ELK GROVE, CA 95758  
 916-395-3003 FAX: 916-395-3363  
 www.gnbvalves.com

TITLE: ASSEMBLY, FINAL, ADAPTER A-18

THIRD ANGLE PROJECTION

DO NOT SCALE DRAWING

C DWG. NO. 114444-00S REV  
 SCALE: 1:15 SHEET 1 OF 1 A