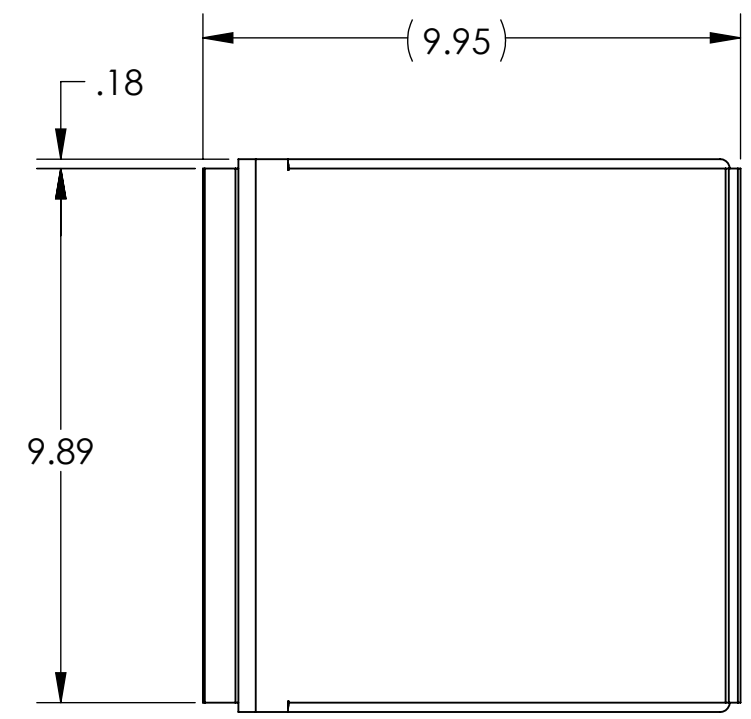
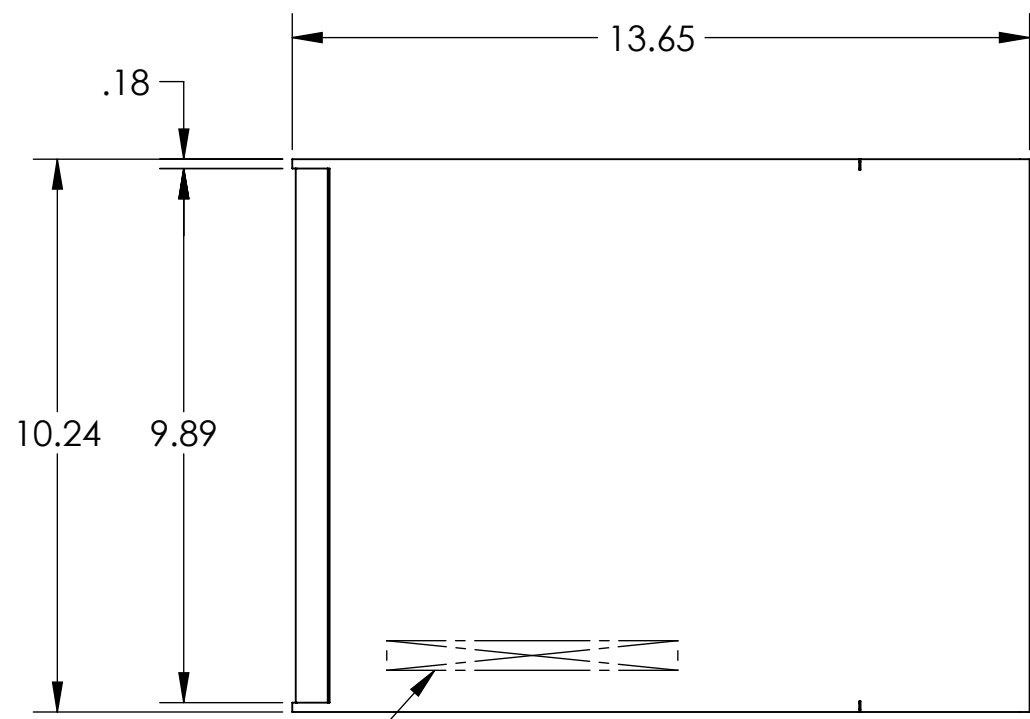
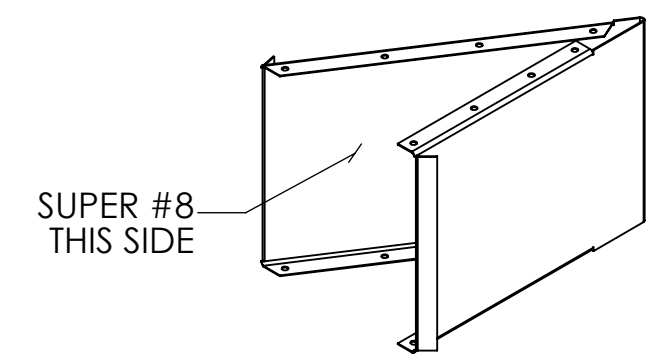
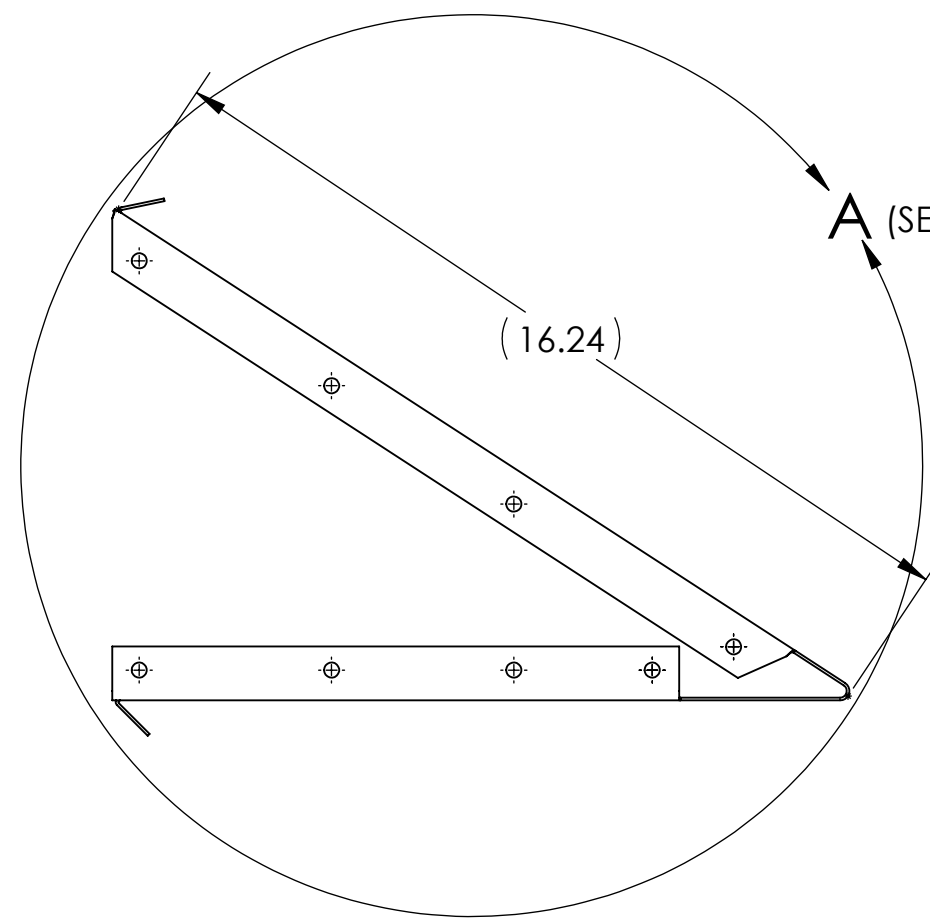


D1003368\_AdlIGO\_AOS\_FM Beam Dump Skin, PART PDM REV: X-027, DRAWING PDM REV: X-011

- NOTES CONTINUED:**
- 5. SCRIBE, ENGRAVE (A VIBRATORY TOOL MAY BE USED), LASER MARK (NO INKS OR DYES) DRAWING PART NUMBER, REVISION (AND VARIANT OR "TYPE" IF APPLICABLE) ON NOTED SURFACE OF PART FOLLOWED ON THE NEXT LINE WITH A THREE DIGIT SERIAL NUMBER. SERIAL NUMBERS START AT 001 FOR THE FIRST ARTICLE AND PROCEED CONSECUTIVELY. USE MINIMUM 0.12" HIGH CHARACTERS, UNLESS THE SIZE OF THE PART DICTATES SMALLER CHARACTERS. EXAMPLE: DXXXXXX-VV, TYPE-XX, S/N XXX  
**(DO NOT APPLY MARK ON SUPER #8 SIDE)**
  - 6. APPROXIMATE WEIGHT = 5.285 LBS.
  - 7. ALL PARTS SHALL BE MANUFACTURED IN ACCORDANCE WITH LIGO SPECIFICATION E0900364 AND E1100842.
  - 8. ALL MATERIAL IS TO BE VIRGIN MATERIAL (i.e. NO WELD REPAIRS, PLUGS OR RECYCLED MATERIAL). NO REPAIRS SHALL BE MADE UNLESS APPROVED IN ADVANCE, AND IN WRITING, BY LIGO LABORATORY. REFER TO LIGO-E0900364.
  - 9. SURFACE FINISH TO BE AS-PROCESSED FROM MILL/SUPPLIER, FREE FROM SCRATCHES OR GOUGES. DO NOT REMOVE PROTECTIVE PLASTIC COATING FROM MIRRORED SIDE.
  - 10. PART WILL BE OXIDIZED PER LIGO SPECIFICATION E1100842 AFTER FABRICATION.
  - 11. BEND RADIUS: UNLESS OTHERWISE NOTED, THE BEND RADIUS SHOULD BE THE MINIMUM REQUIRED TO FORM WITHOUT CRACKING OR REQUIRING ADDITIONAL WORK WHEN FORMING.

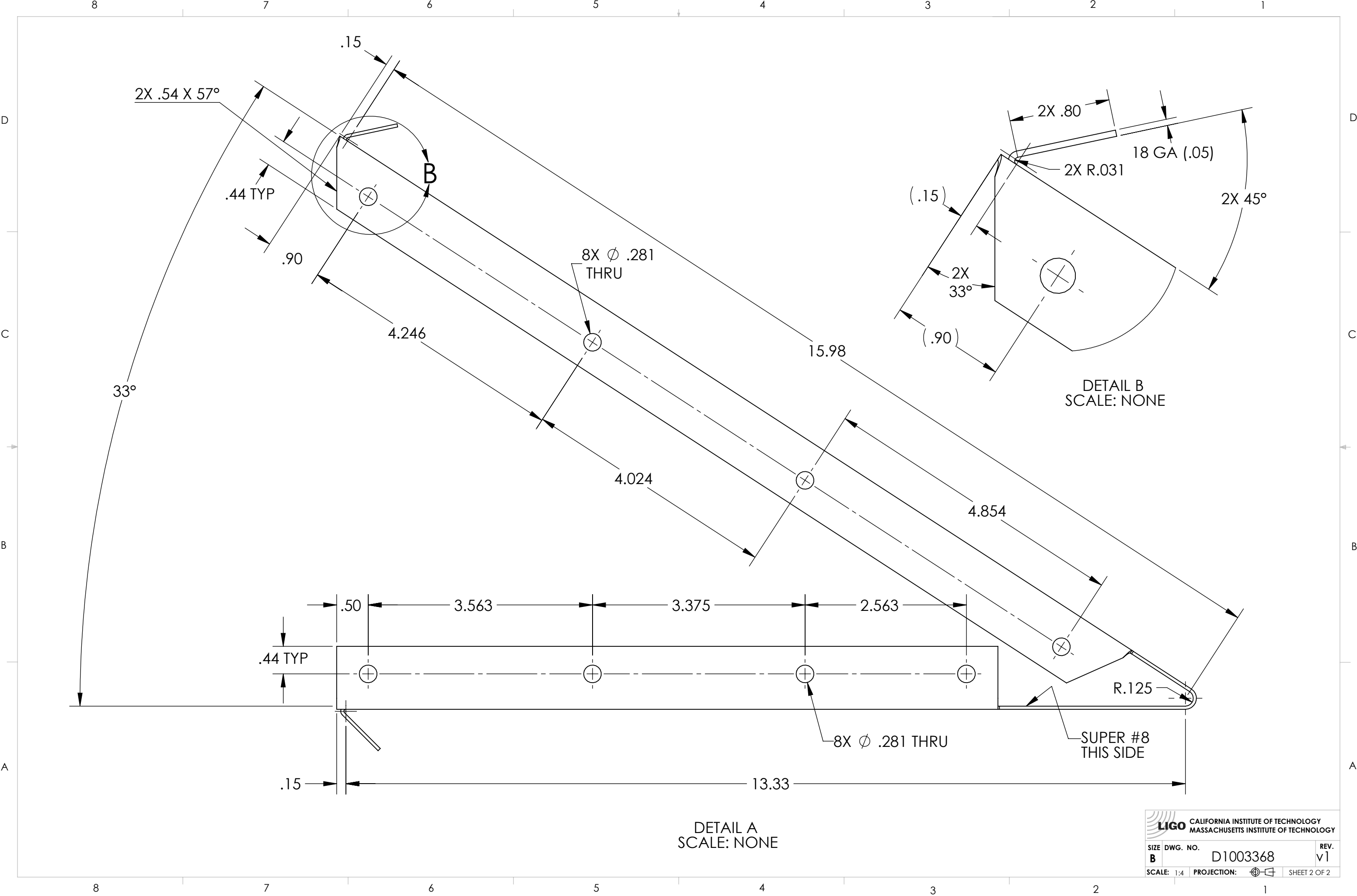
REV.	DATE	DCN #	DRAWING TREE #
v1	31 OCT 2011	E1200051	-
-	-	-	-
-	-	-	-



NOTES AND TOLERANCES: (UNLESS OTHERWISE SPECIFIED)	
DIMENSIONS ARE IN INCHES	
TOLERANCES: .XX ± .02 .XXX ± .005 ANGULAR ± 1.0°	
1. INTERPRET DRAWING PER ASME Y14.5-1994. 2. REMOVE ALL SHARP EDGES, .005-.015, FOR MACHINED PARTS. ROUND ALL EDGES APPROXIMATELY R.02 FOR SHEET METAL PARTS. 3. DO NOT SCALE FROM DRAWING. 4. ALL MACHINING FLUIDS MUST BE FULLY SYNTHETIC, FULLY WATER SOLUBLE AND FREE OF SULFUR, SILICONE, AND CHLORINE.	
MATERIAL	FINISH
18 GA 304 SSSL	9 SUPER #8

CALIFORNIA INSTITUTE OF TECHNOLOGY MASSACHUSETTS INSTITUTE OF TECHNOLOGY		PART NAME	
ADVANCED LIGO		aLIGO AOS FM BEAM DUMP SKIN	
DESIGNER	M. SMITH	SIZE	DWG. NO.
DRAFTER	J. TERRAZAS	B	D1003368
CHECKER		SCALE	1:4
APPROVAL	M. SMITH	PROJECTION	1ST ANGLE
SYSTEM	ADVANCED LIGO	SUB-SYSTEM	AOS
NEXT ASSY	D1102105	REV.	v1
		SHEET 1 OF 2	

D1003368\_AcLIGO\_AOS\_FM Beam Dump Skin, PART PDM REV: X-027, DRAWING PDM REV: X-011



DETAIL A  
SCALE: NONE

DETAIL B  
SCALE: NONE

**LIGO** CALIFORNIA INSTITUTE OF TECHNOLOGY  
MASSACHUSETTS INSTITUTE OF TECHNOLOGY

SIZE	DWG. NO.	REV.
B	D1003368	v1
SCALE: 1:4		PROJECTION:
		SHEET 2 OF 2