

New Folder Name Termination Support
Foundation Loads

CBI Services, Inc.

1501 N. Division Street
Plainfield IL 60544-8929

FAX TRANSMISSION

Fax #: CBI:CT 2.3/0011
RE: Contract PC 181520
Foundation Loads; Termination Support

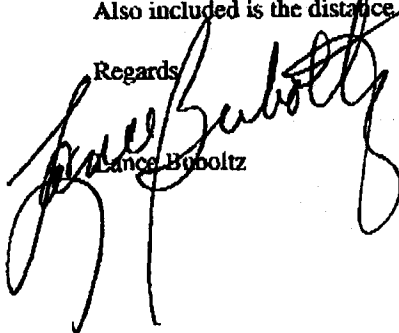
L160-T950127-00-B

Phone: 815 439 6000
FAX: 815 439 6010

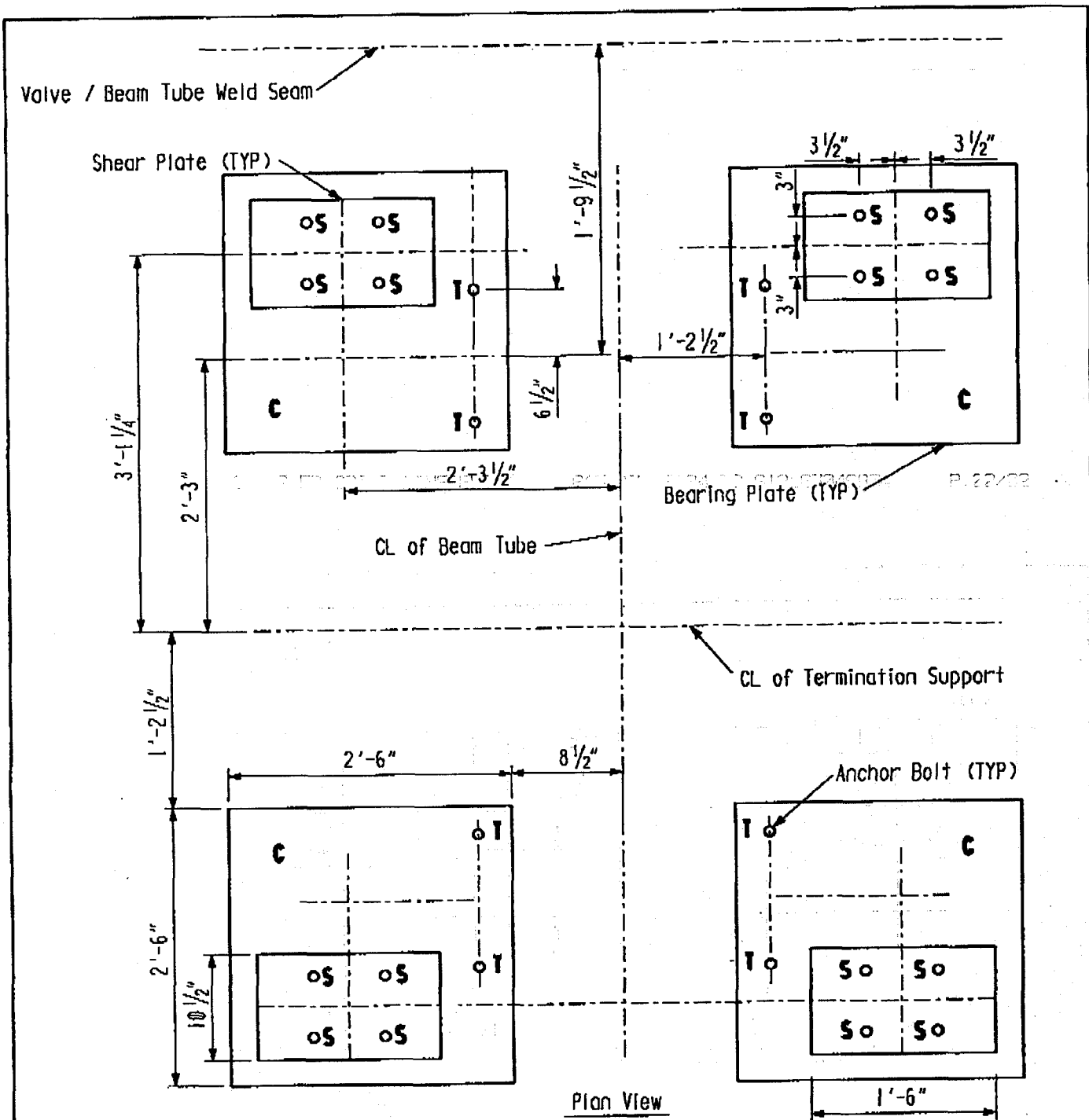
TO: <u>Larry Jones</u>	FROM: <u>Lance Buboltz</u>
COMPANY: <u>Caltech</u>	DATE: <u>12/18/95</u>
FAX NO.: <u>(818)304-9834</u>	# OF PAGES: <u>(including cover) 2</u>
FAX I.D.# _____	
RE: _____	

Larry, per our telecon earlier today, attached are the checked Termination Support Foundation Loads. Also included is the distance from the Beam Tube Weld Seam to the centerline of the support.

Regards



Lance Buboltz



- Notes:
- 1) All dimensions are typical.
 - 2) All bolts are 1" Dia. with $12\frac{3}{8}"$ embedment
 - 3) C (total downward force/bearing plate) = 32,684 lb
 - 4) S (shear/bolt) = 12,078 lb
 - 5) T (tension/bolt) = 14,284 lb

SUBJECT Termination Support Foundation Loads LIGO	CBI OFFICE PVE-A		REVISION	0	REFERENCE NO.
	MADE BY DTR	CHKD BY ARL	MADE BY	CHKD BY	SHT ____ OF ____
	DATE 12/15/95	DATE 12-18-95	DATE	DATE	