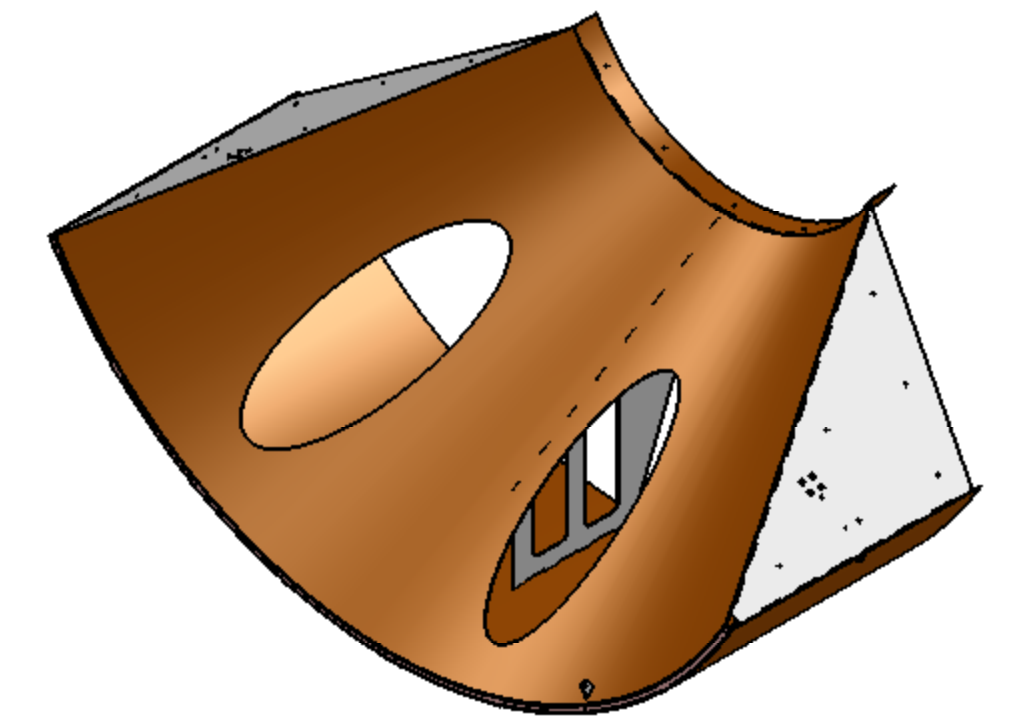
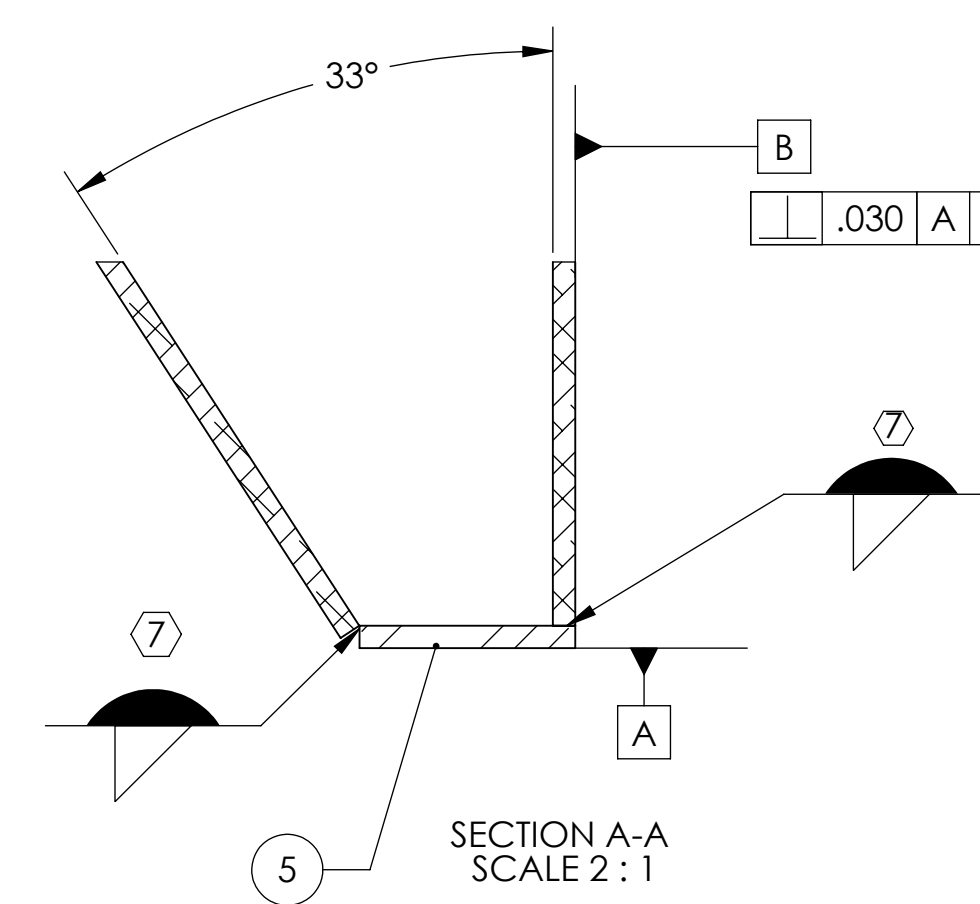
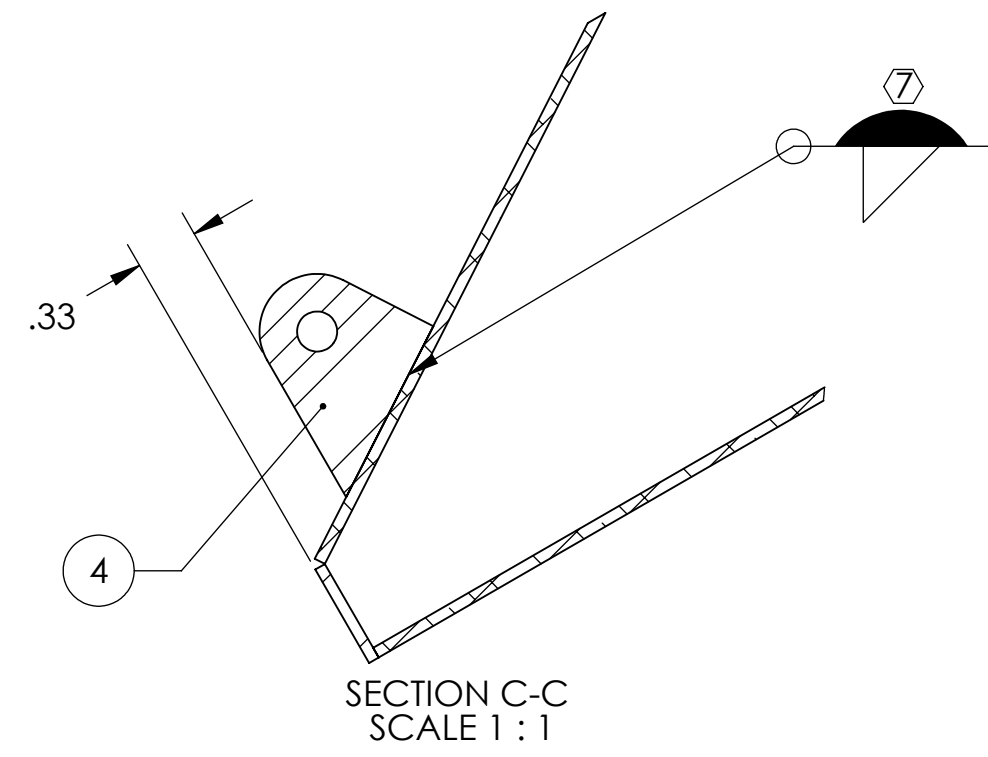
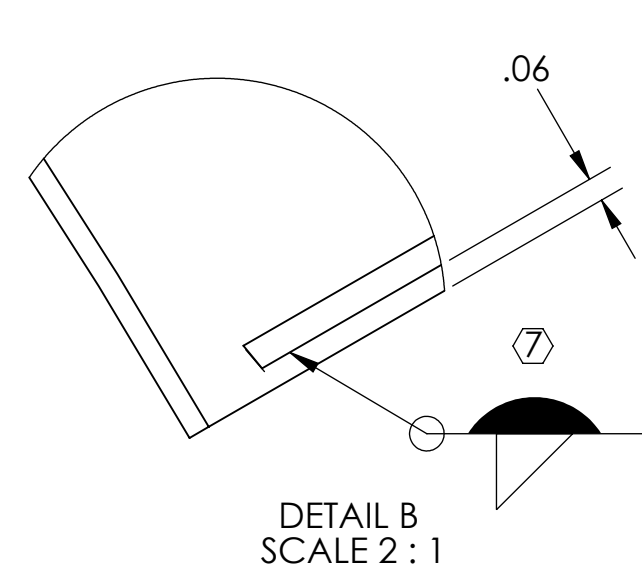
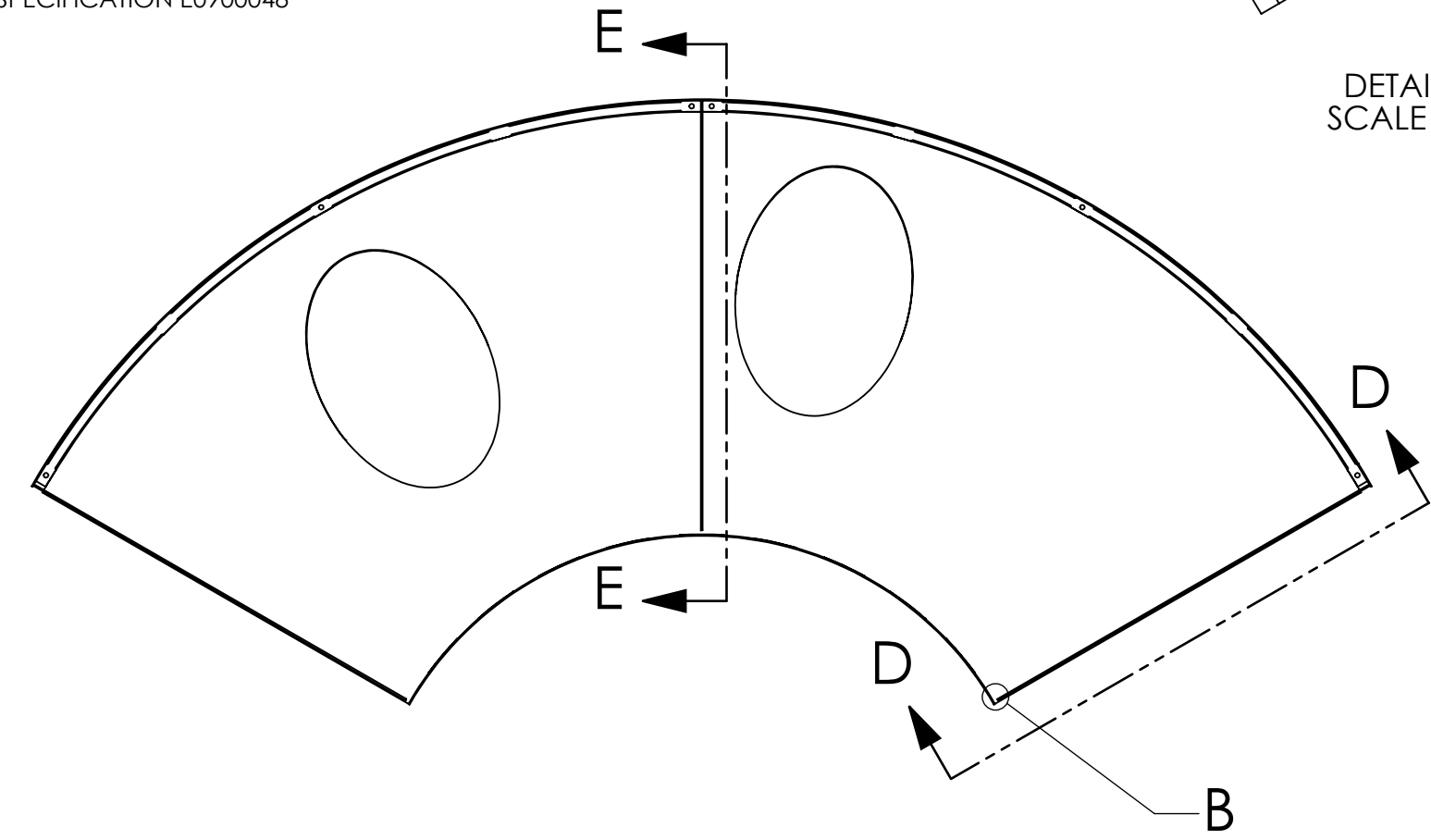


NOTES CONTINUED:
 5. SCRIBE, ENGRAVE (A VIBRATORY TOOL MAY BE USED), LASER MARK OR MECHANICALLY STAMP (NO INKS OR DYES) DRAWING PART NUMBER, REVISION (AND VARIANT OR "TYPE" IF APPLICABLE) ON NOTED SURFACE OF PART FOLLOWED ON THE NEXT LINE WITH A THREE DIGIT SERIAL NUMBER. SERIAL NUMBERS START AT 001 FOR THE FIRST ARTICLE AND PROCEED CONSECUTIVELY. USE MINIMUM 0.12" HIGH CHARACTERS, UNLESS THE SIZE OF THE PART DICTATES SMALLER CHARACTERS. EXAMPLE: DXXXXXX-VY, TYPE-XX, S/N XXX

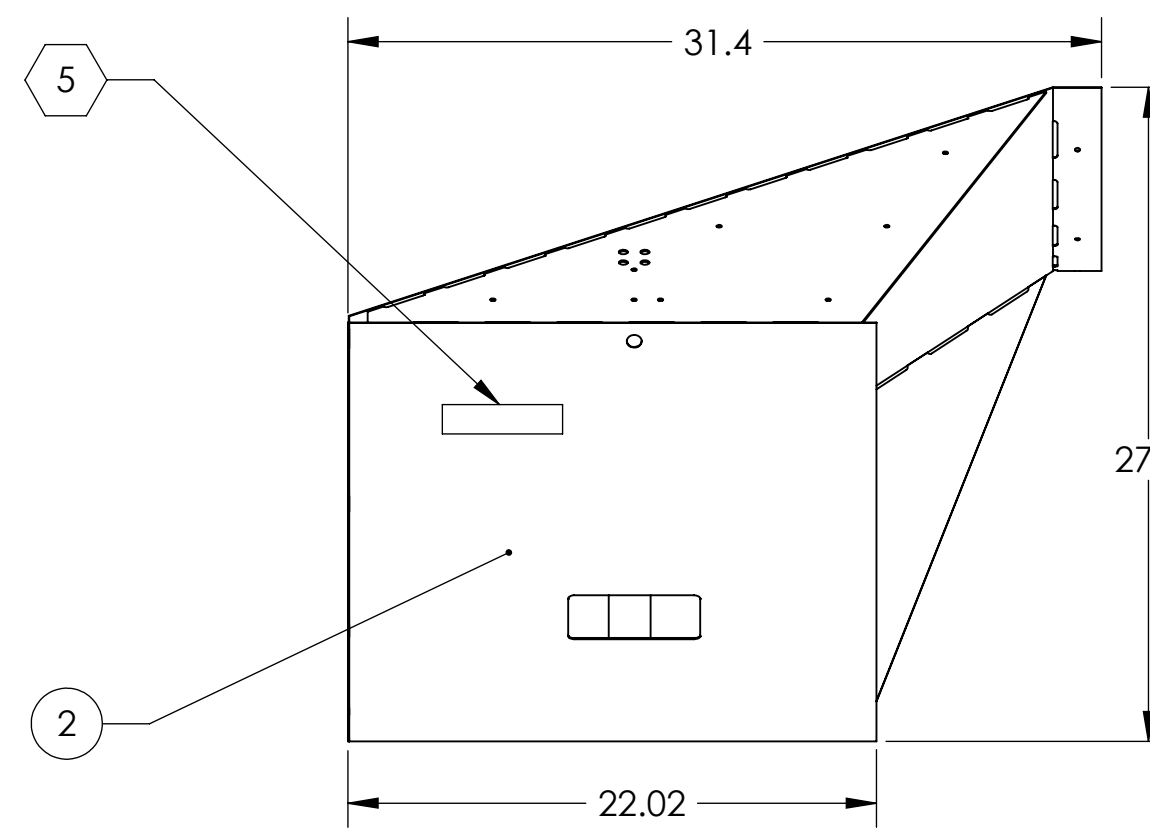
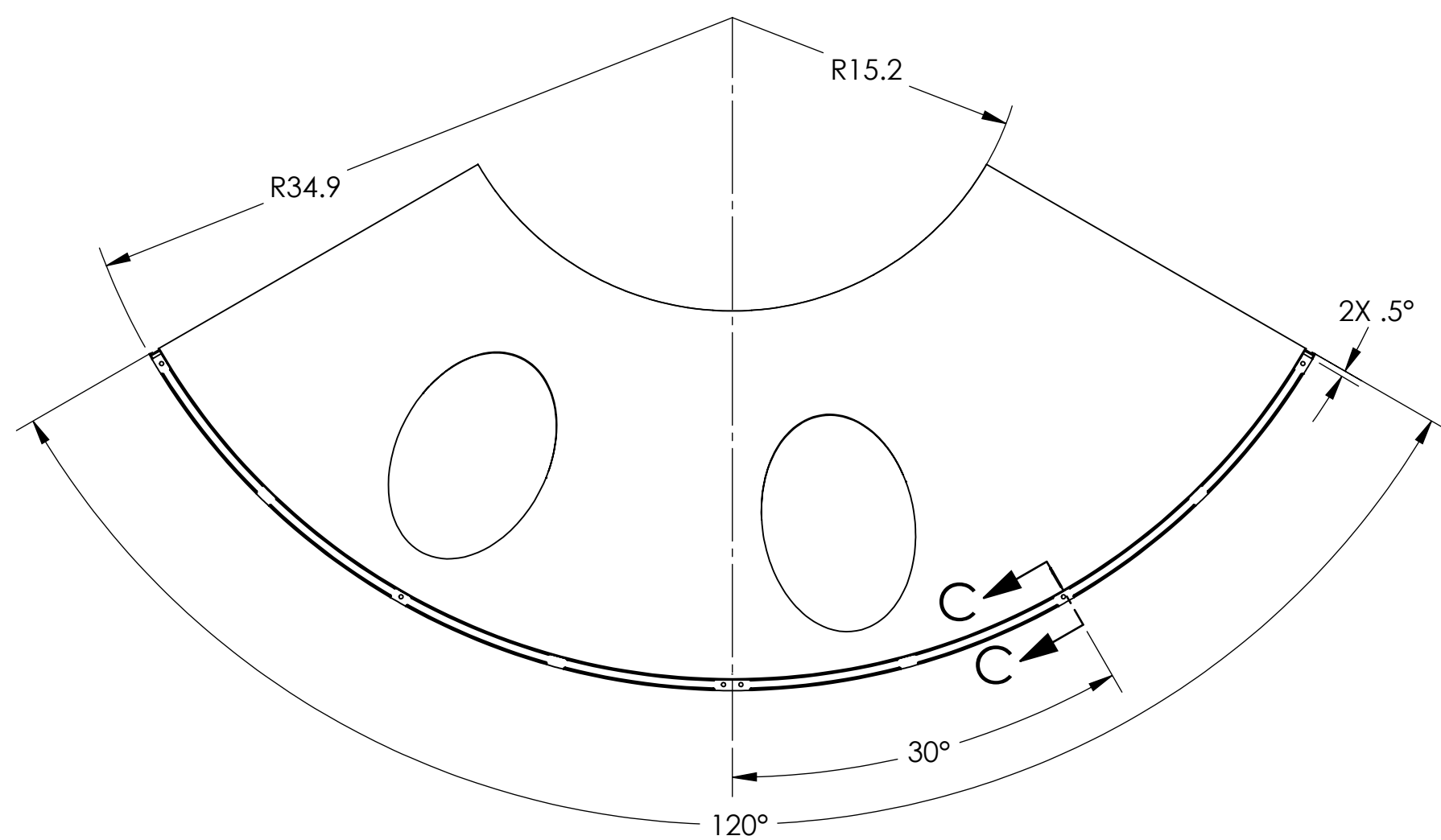
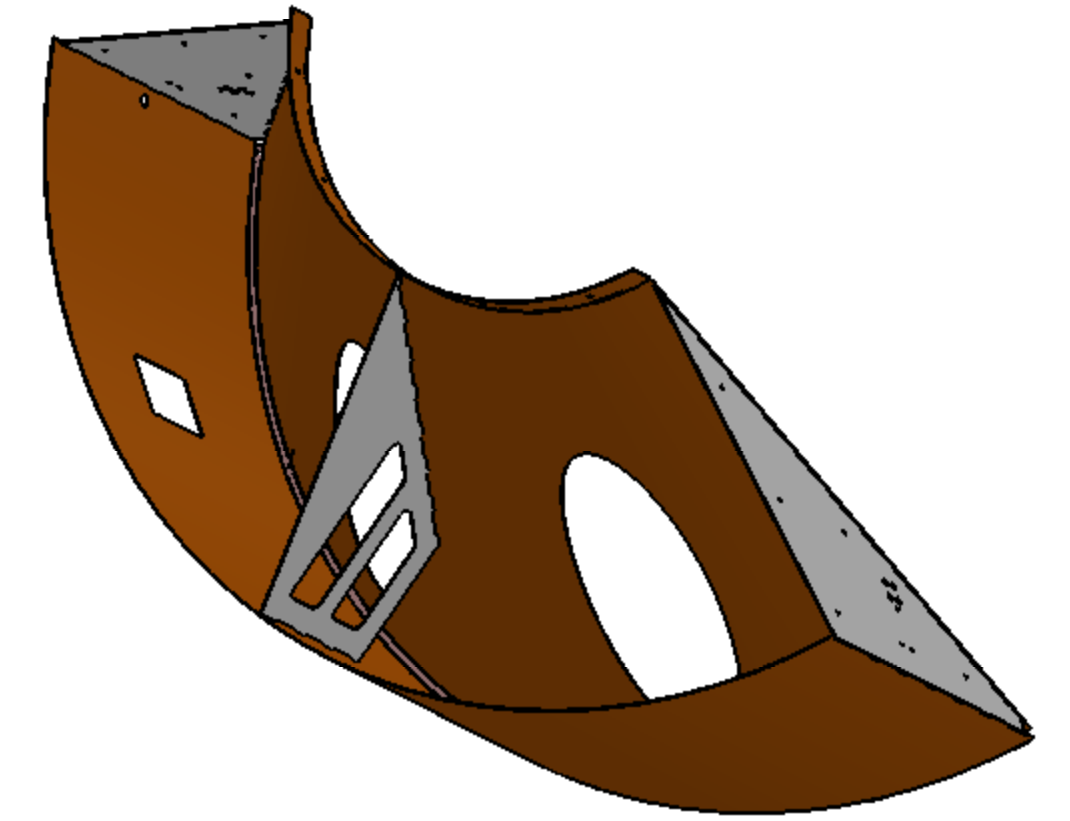
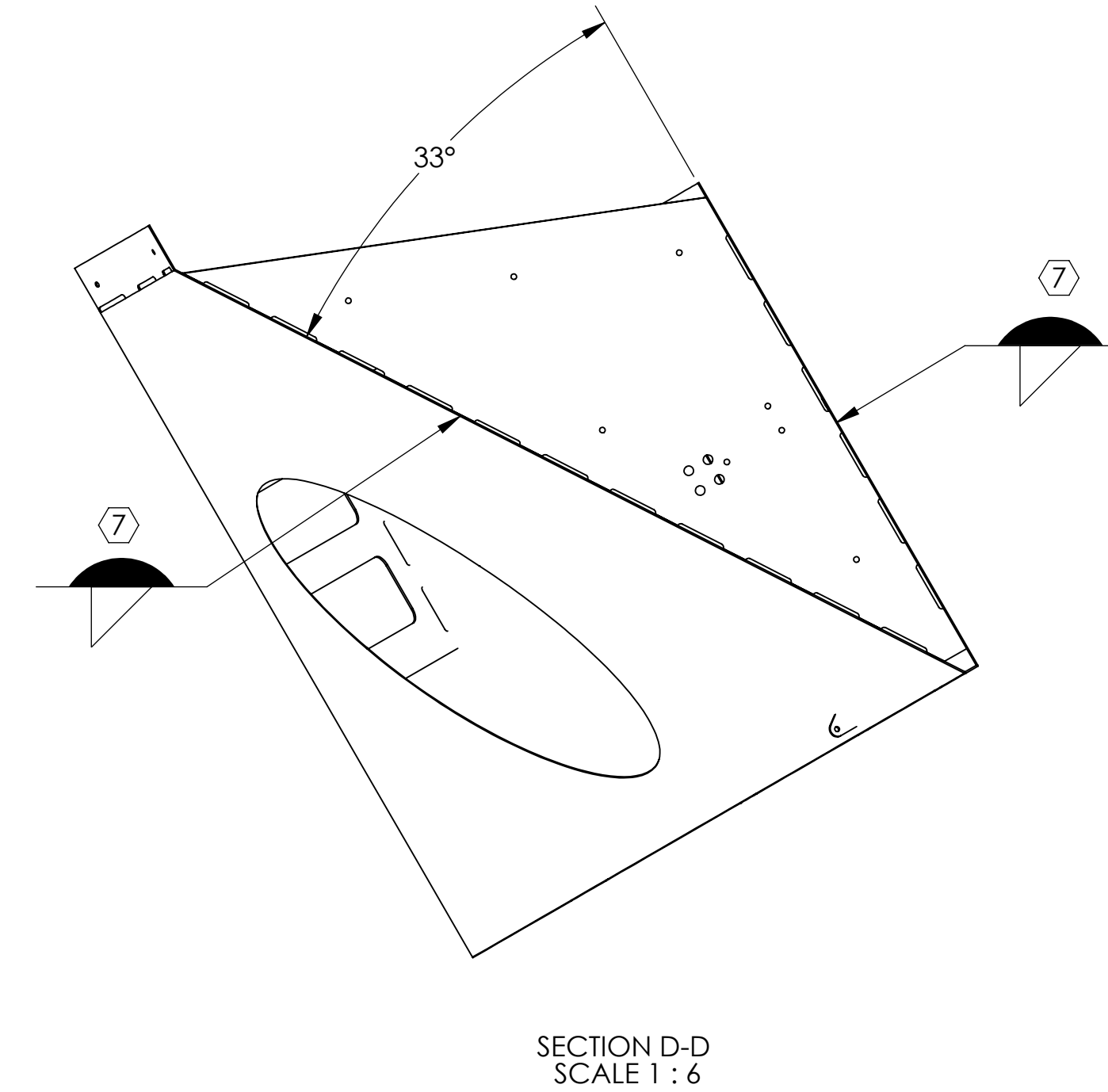
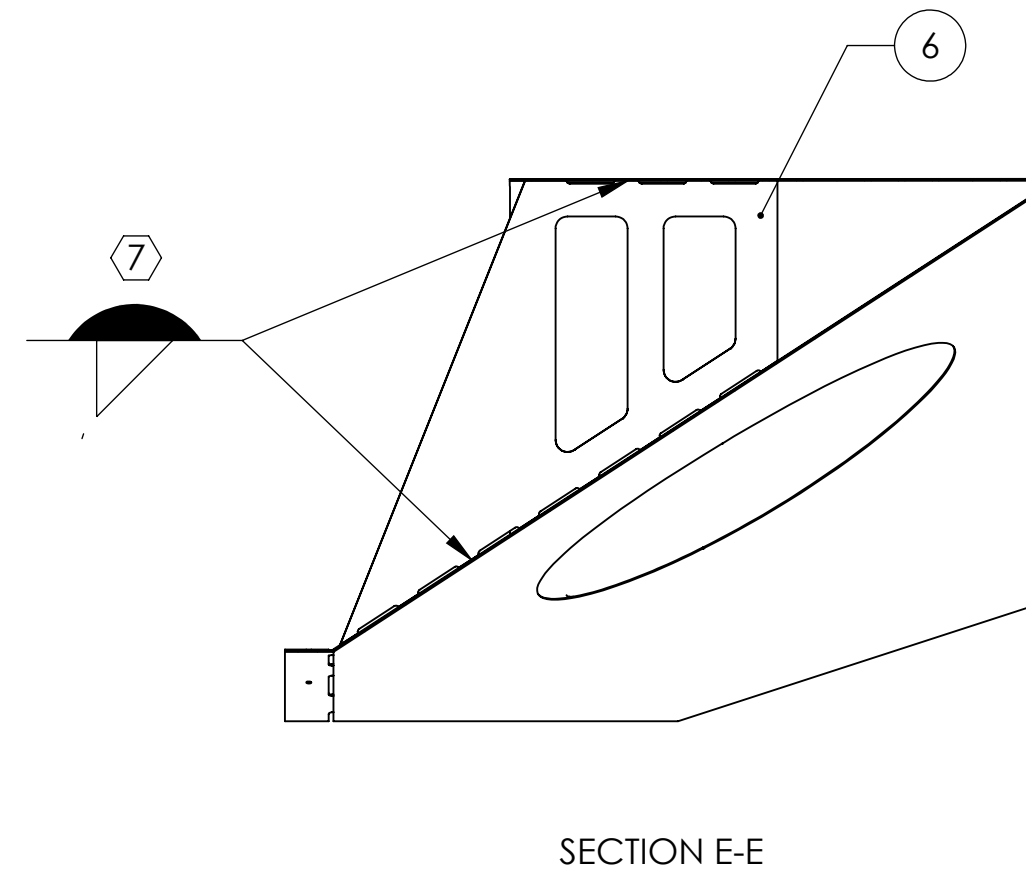
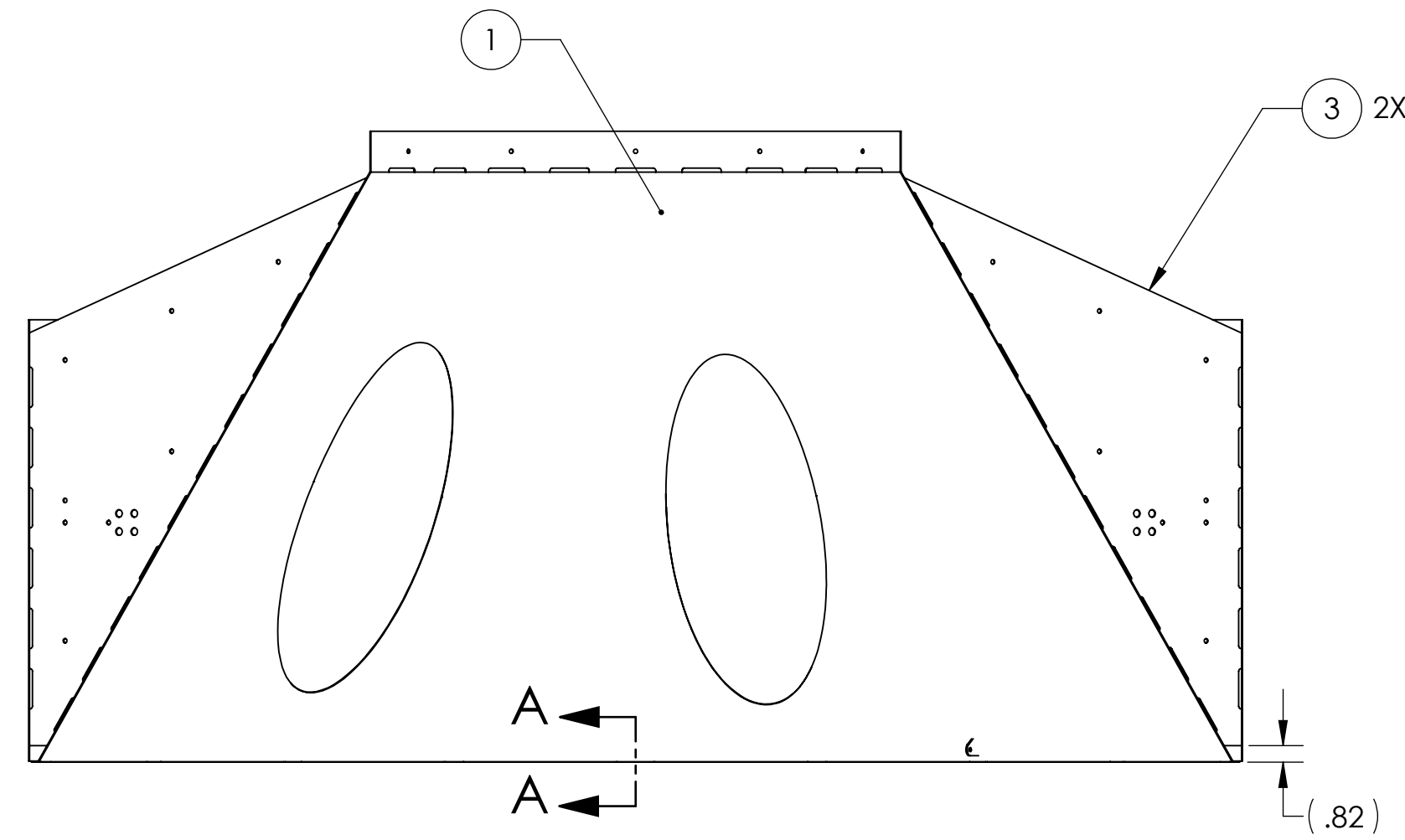
6. ASSEMBLY TO BE PORCELAIN COATED AFTER WELDMENT IS COMPLETED PER SPECIFICATION E1000083

7. FILLET WELDS WHERE ITEMS MAKE CONTACT. WELDING MUST BE PER SPECIFICATION E0900048

REV.	DATE	DCN #	DRAWING TREE #
v1	29 JUL 2011	E1000360-v2	-
-	-	-	-



GENERAL VIEW FOR REFERENCE ONLY NO SCALE



ITEM NO.	PART NUMBER	DESCRIPTION	MATERIAL	QTY.	SPARE	TOTAL
6	D1002849	MANIFOLD CRYO BAFFLE WELDMENT BRACE	14GA A424 TYPE I STEEL	1		0
5	D1000559	RADIAL SEGMENT, RIGHT	18GA A424 TYPE I STEEL	1		0
4	D1001073	RADIAL ATTACHMENT NUT PLATE	14GA A424 TYPE I STEEL	1		0
3	D1000536	BAFFLE BRACE BRACKET	14GA A424 TYPE I STEEL	1		0
2	D0902621	MANIFOLD CRYO BAFFLE BRACKET	14GA A424 TYPE I STEEL	2		0
1	D1003232	MANIFOLD-CRYO BAFFLE INNER SEGMENT WELDMENT, ETMY H1, RIGHT	18GA A424 TYPE I STEEL	1		0

NOTES AND TOLERANCES: (UNLESS OTHERWISE SPECIFIED)	
DIMENSIONS ARE IN INCHES	
TOLERANCES: .X ± .1 .XX ± .06 .XXX ± .010	
ANGULAR ± 1.0°	
MATERIAL	N/A
FINISH	N/A

LIGO CALIFORNIA INSTITUTE OF TECHNOLOGY
 MASSACHUSETTS INSTITUTE OF TECHNOLOGY

SYSTEM: **ADVANCED LIGO** SUB-SYSTEM: **AOS**

NEXT ASSY: **D1003227**

PARTS LIST		PART NAME		MANIFOLD CRYO BAFFLE SEGMENT SUBASSEMBLY WELDMENT, ETMY H1, RIGHT	
DESIGNER	TQ. NGUYEN	16 DEC 2010	SIZE	DWG. NO.	REV.
DRAFTER	TQ. NGUYEN	29 SEP 2011	D	D1003231	v1
CHECKER	M. SMITH		SCALE: 1:8	PROJECTION:	SHEET 1 OF 1
APPROVAL	D. COYNE				

D1003231_LIGO_Manifold_Cryo_Baffle_Segment_Subassembly_Weldment_ETMY_H1_Right_PRT_PDM_REV_X-004_DRAWING_PDM_REV_X-001