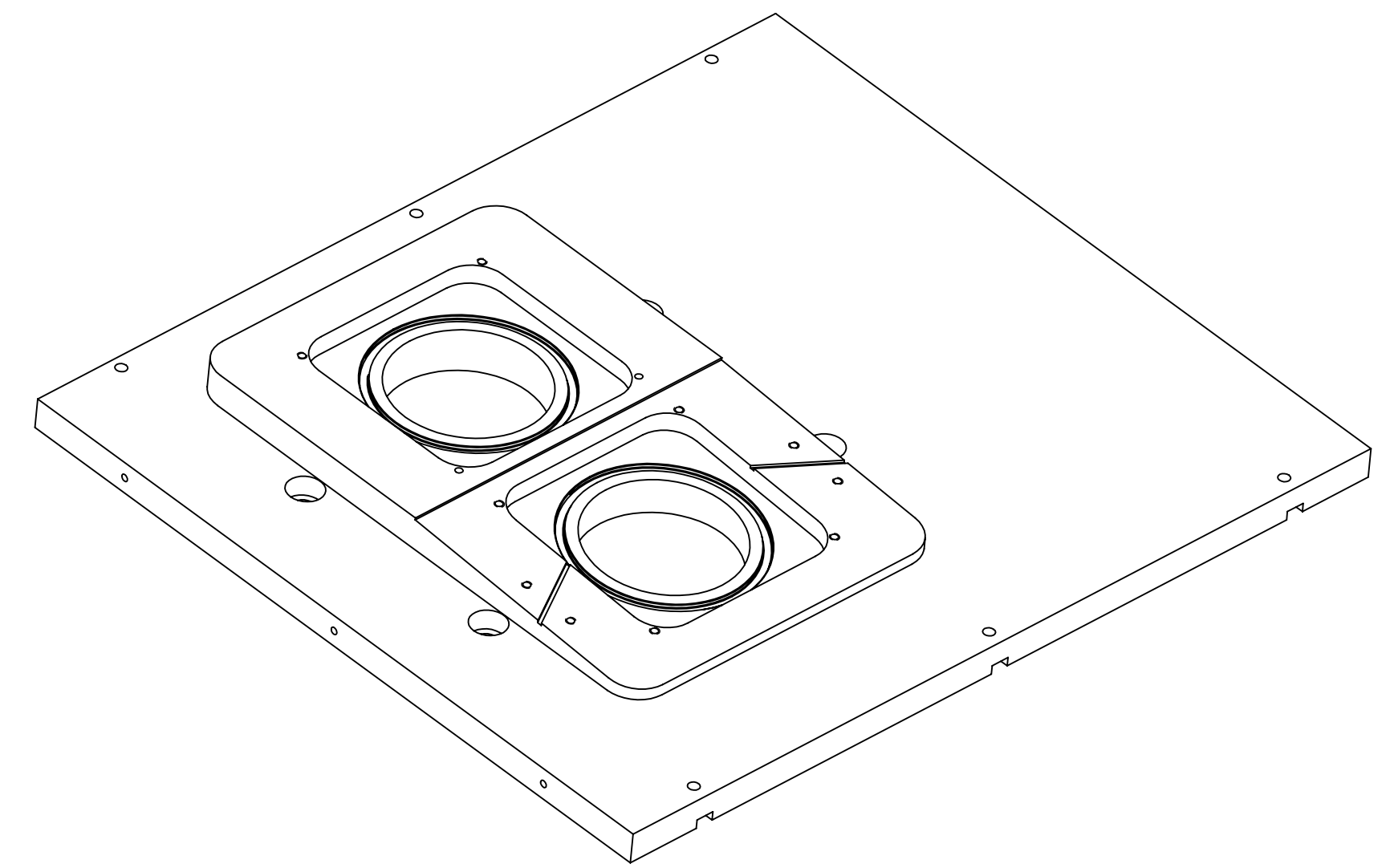
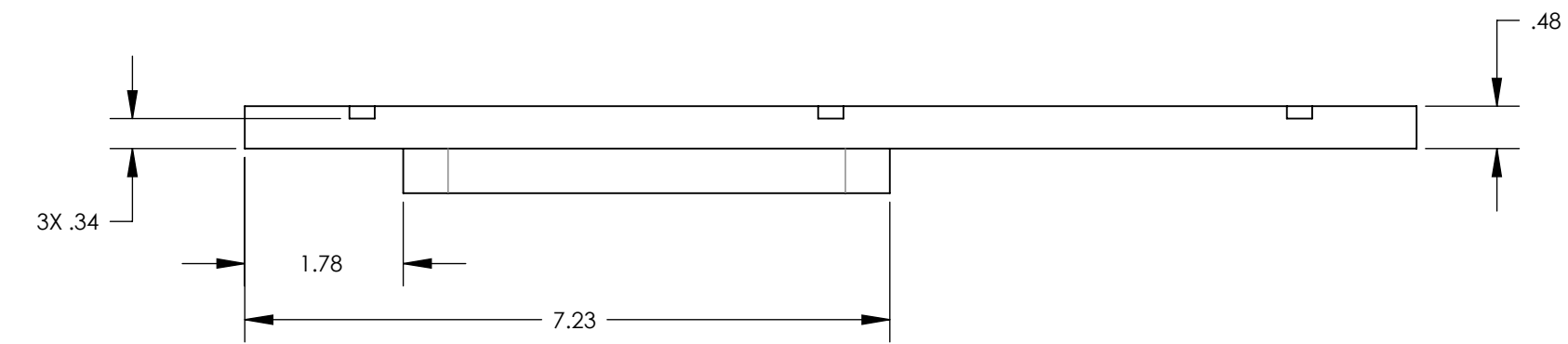


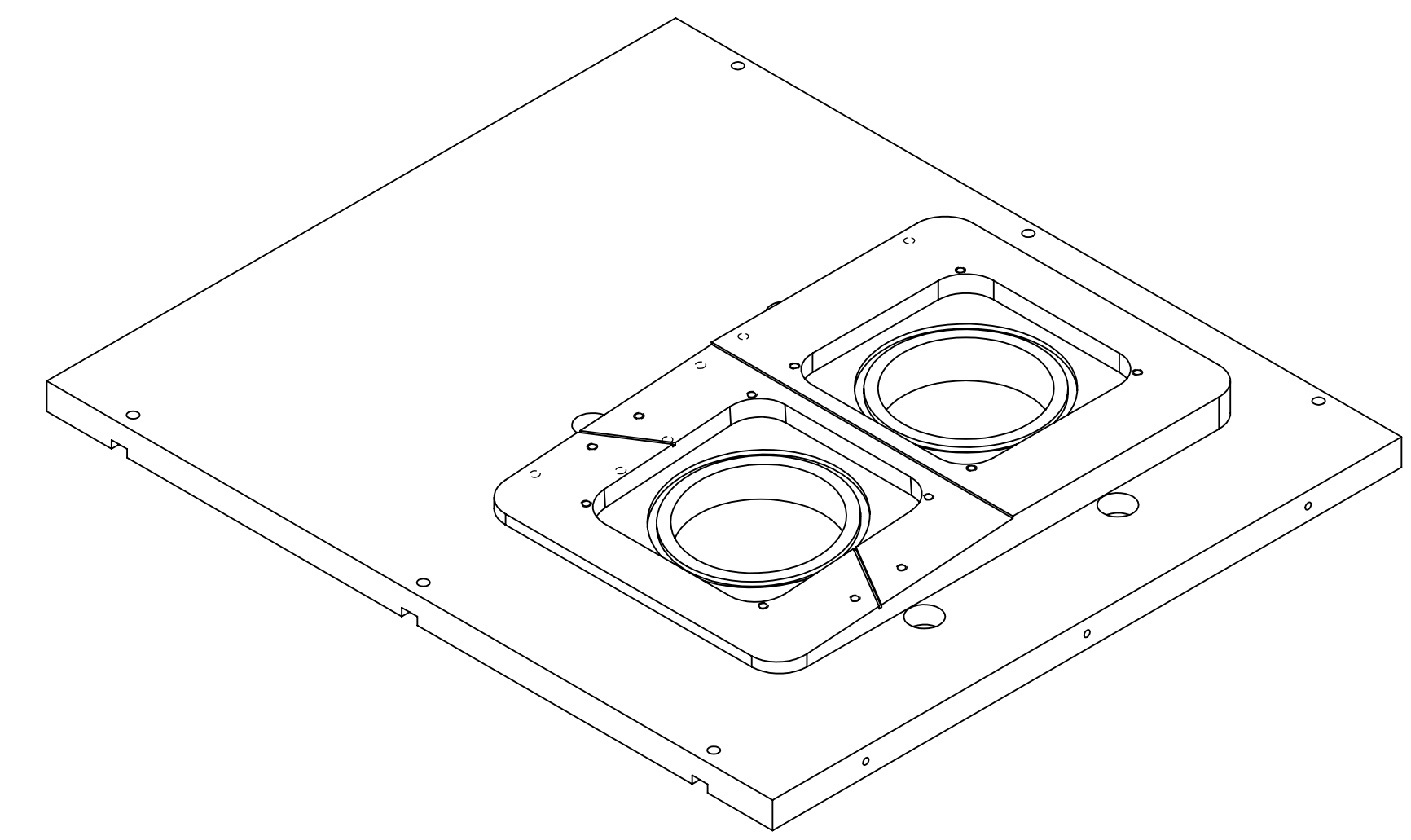
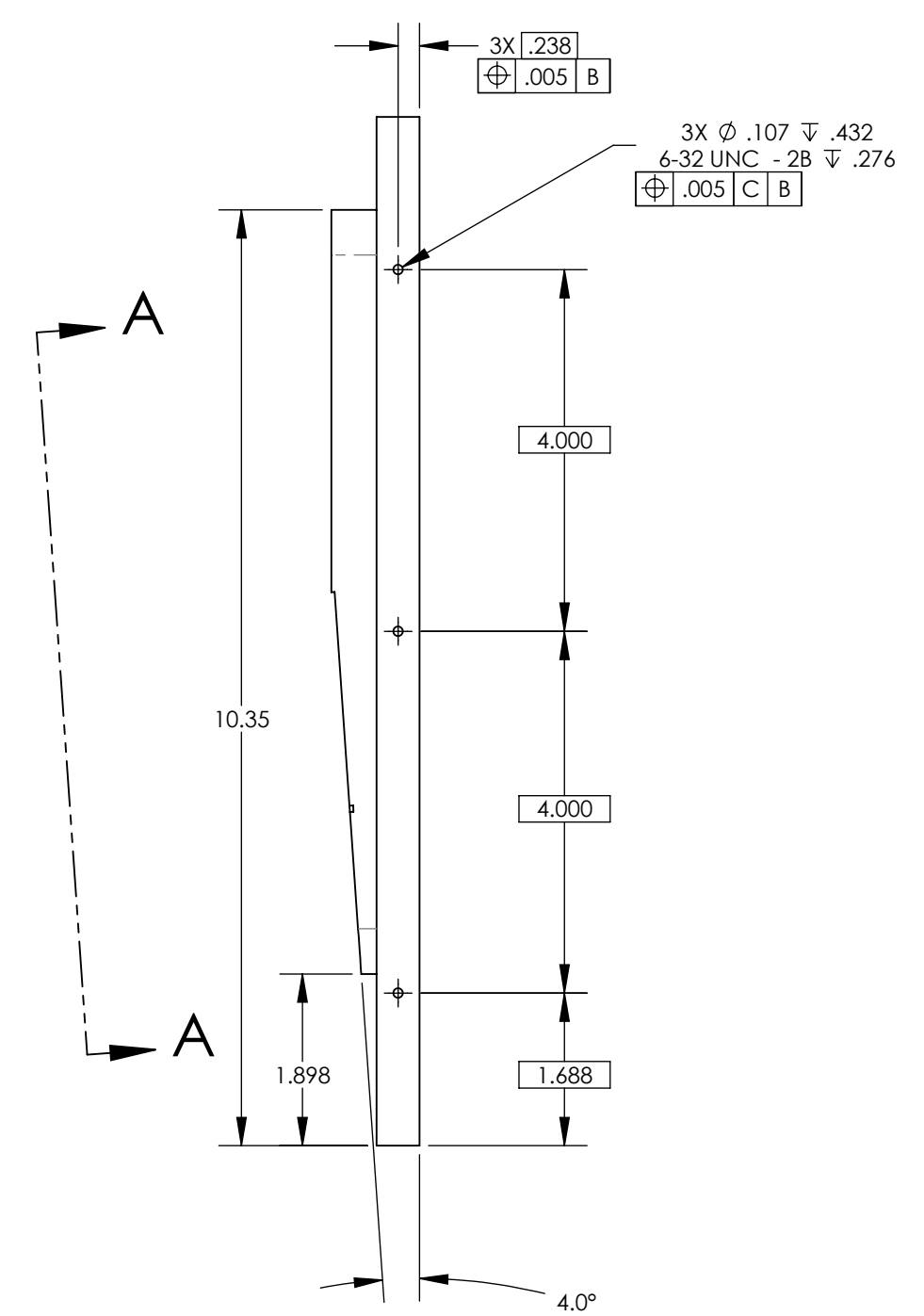
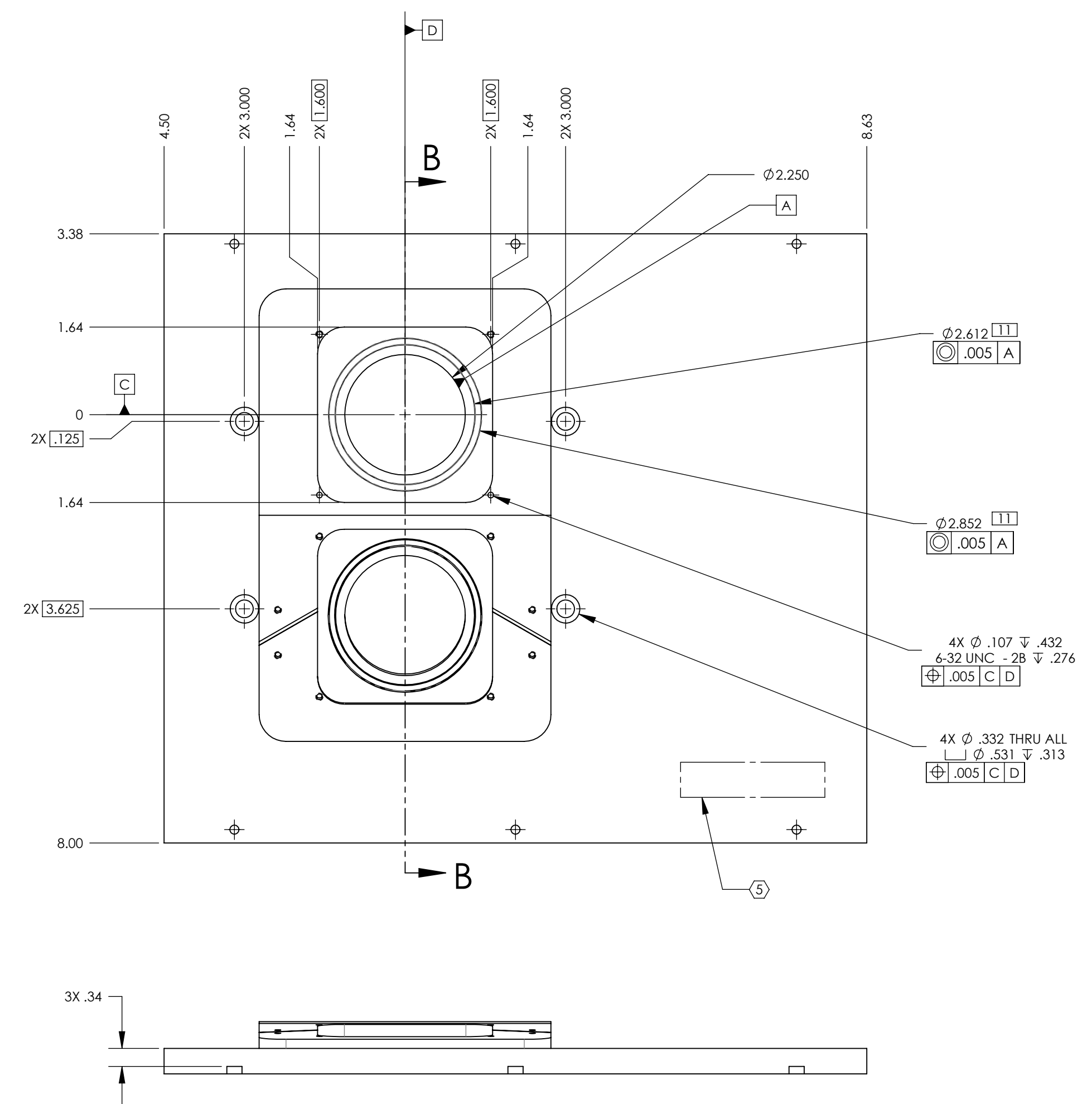
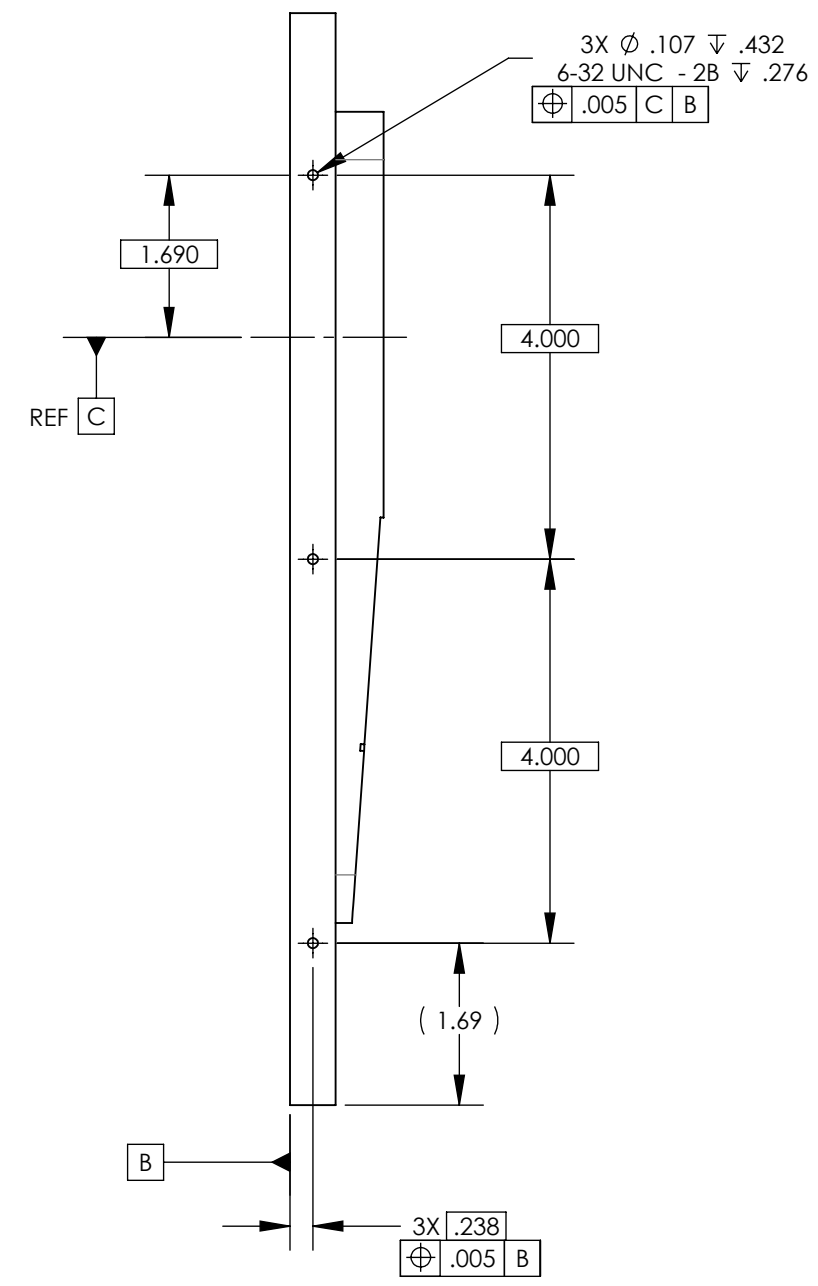
- NOTES CONTINUED:**
- 5 SCRIBE, ENGRAVE (A VIBRATORY TOOL MAY BE USED), LASER MARK OR MECHANICALLY STAMP (NO INKS OR DYES) DRAWING PART NUMBER, REVISION (AND VARIANT OR 'TYPE' IF APPLICABLE) ON NOTED SURFACE OF PART FOLLOWED ON THE NEXT LINE WITH A THREE DIGIT SERIAL NUMBER. SERIAL NUMBERS START AT 001 FOR THE FIRST ARTICLE AND PROCEED CONSECUTIVELY. USE MINIMUM 0.12" HIGH CHARACTERS, UNLESS THE SIZE OF THE PART DICTATES SMALLER CHARACTERS. EXAMPLE: DXXXXXX-VY, TYPE-XX, S/N XXX
 - 6 APPROXIMATE WEIGHT = 7.607 LB
 - 7 MACHINE ALL SURFACES TO REMOVE OXIDES AND MILL FINISH. USE OF ABRASIVE REMOVAL TECHNIQUES IS NOT ALLOWED. REFER TO LIGO-E0900364
 - 8 ALL PARTS SHALL BE MANUFACTURED IN ACCORDANCE WITH LIGO SPECIFICATION E0900364.
 - 9 ALL MATERIAL IS TO BE VIRGIN MATERIAL (I.E. NO WELD REPAIRS, PLUGS OR RECYCLED MATERIAL). NO REPAIRS SHALL BE MADE UNLESS APPROVED IN ADVANCE, AND IN WRITING, BY LIGO LABORATORY. REFER TO LIGO-E0900364.
 - 10 SURFACE FINISH TO BE AS-PROCESSED FROM MILL/SUPPLIER, FREE FROM SCRATCHES OR GOUGES.
 - 11 REFER TO LIGO-T1 100346 FOR FEATURE DESIGN GUIDELINES

TYPE (CONFIGURATION)	DESCRIPTION
-01	αLIGO, TCS, H2, X-ARM (SHOWN)
-02	αLIGO, TCS, H2, Y-ARM (MIRROR OF -01)

REV.	DATE	DCN #	DRAWING TREE #
v2	26 JUL 2011	E1100655-v1	E1100656-v1



TYPE -01



TYPE -02

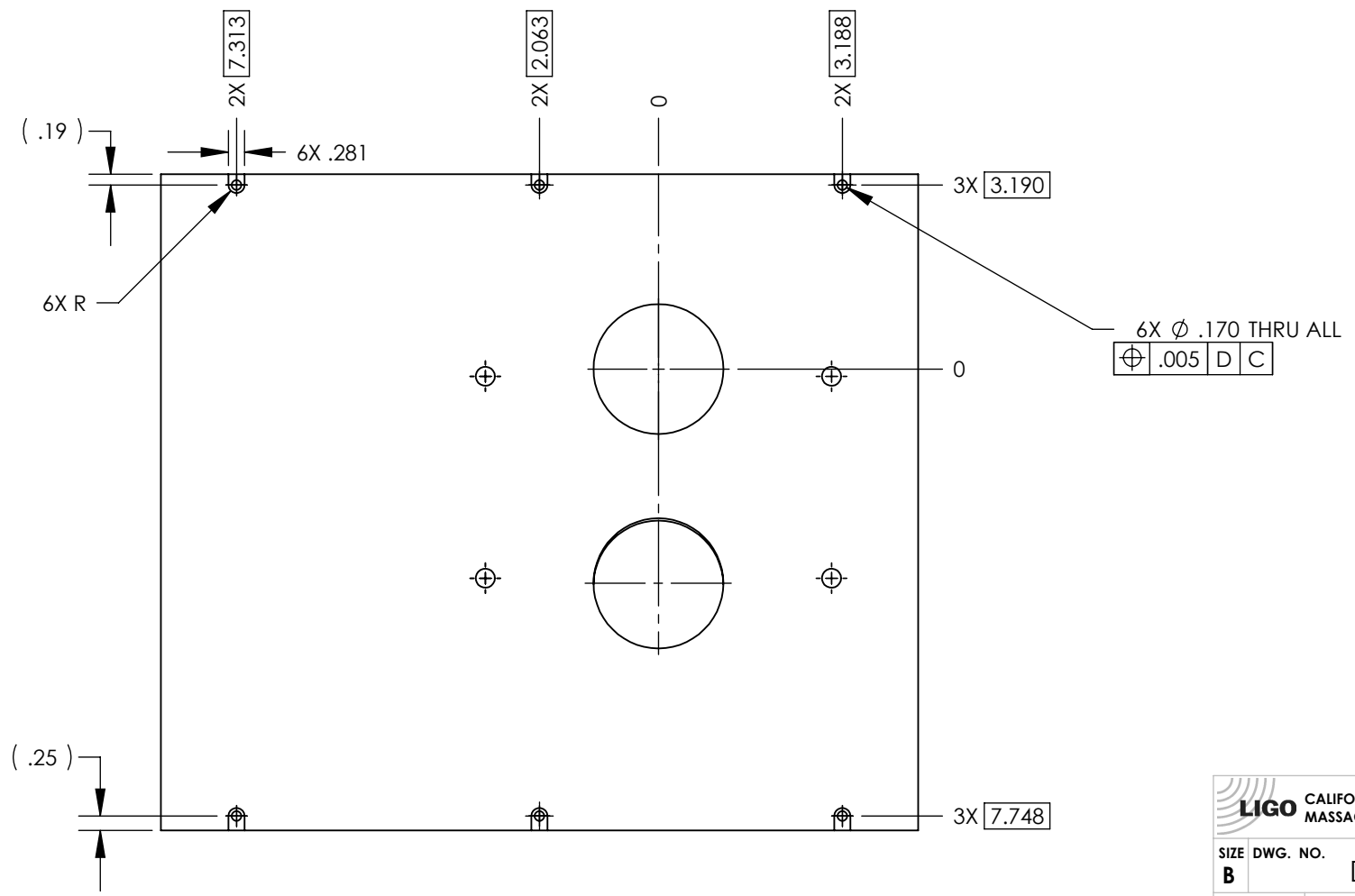
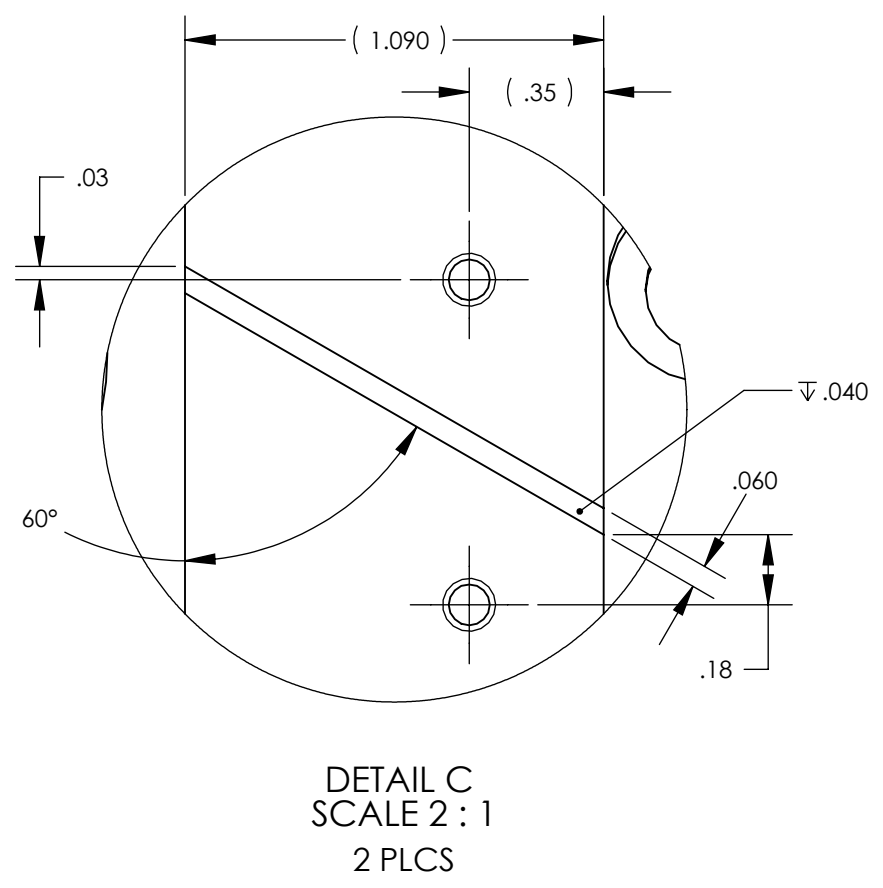
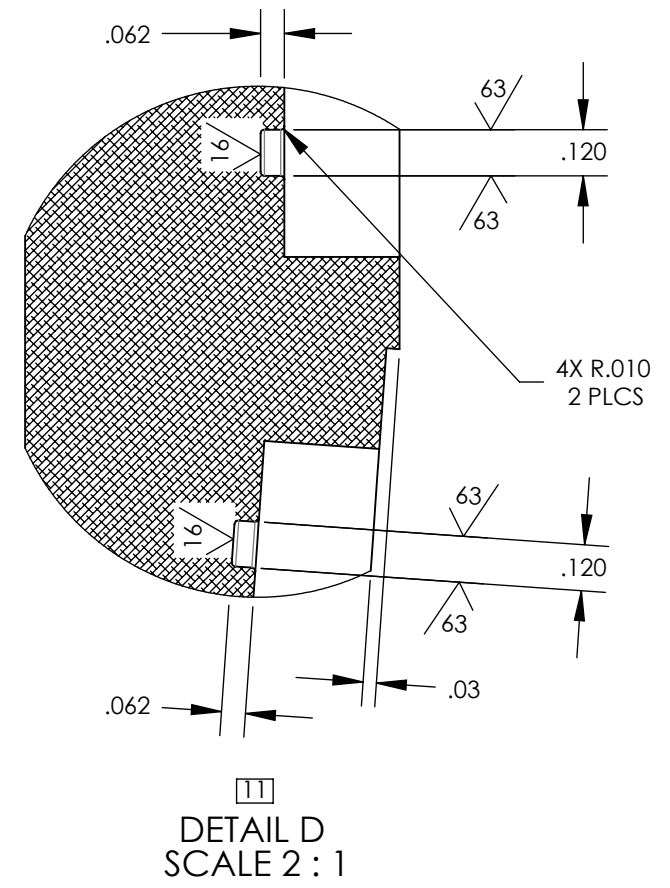
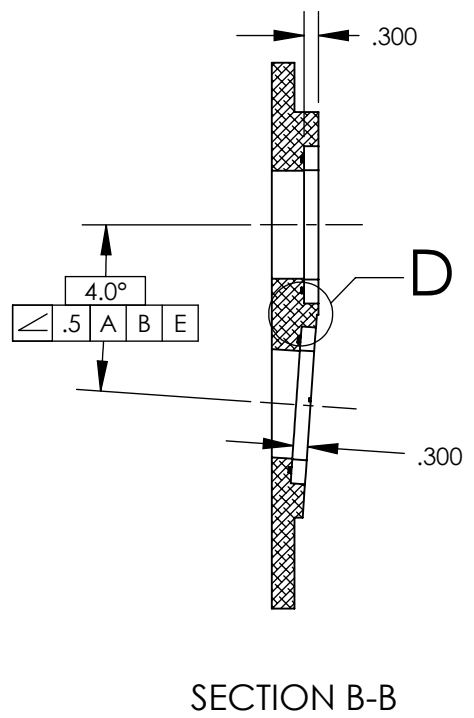
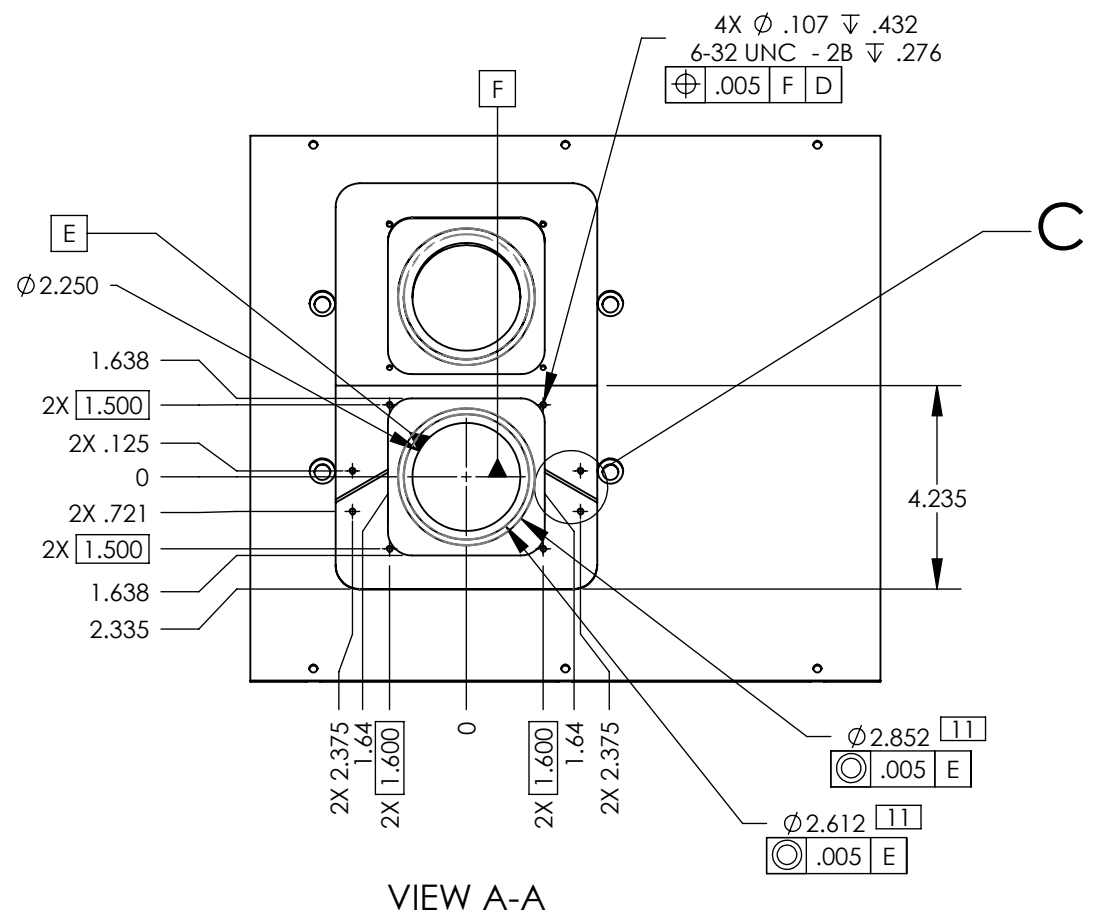
NOTES AND TOLERANCES: (UNLESS OTHERWISE SPECIFIED)	
1. INTERPRET DRAWING PER ASME Y14.5-1994.	
2. REMOVE ALL SHARP EDGES, .005-.015, FOR MACHINED PARTS. ROUND ALL EDGES APPROXIMATELY R.02 FOR SHEET METAL PARTS.	
3. DO NOT SCALE FROM DRAWING.	
4. ALL MACHINING FLUIDS MUST BE FULLY SYNTHETIC, FULLY WATER SOLUBLE AND FREE OF SULFUR, SILICONE, AND CHLORINE.	
DIMENSIONS ARE IN INCHES	
TOLERANCES: .XX ± .01 .XXX ± .005	
ANGULAR ± 0.5°	
MATERIAL	6061 Alloy
FINISH	63 μinch

CALIFORNIA INSTITUTE OF TECHNOLOGY MASSACHUSETTS INSTITUTE OF TECHNOLOGY	
SYSTEM	ADVANCED LIGO
SUB-SYSTEM	AOS
NEXT ASSY	D1003204

PART NAME		VP ENCLOSURE FRONT WALL			
DESIGNER	A. LANGLEY	16 MAR 2011	SIZE	DWG. NO.	REV.
DRAFTER	A. LANGLEY	16 MAR 2011	D	D1003206	v2
CHECKER	M. JACOBSON	26 JUL 2011	SCALE: 1:2	PROJECTION:	SHEET 1 OF 2
APPROVAL	P WILLEMS	30 MAR 2011			

D:\003206_VP ENCLOSURE FRONT WALL\Final\PART PDM REV-X-035.DWG PDM REV. X-020

D1003206_VP ENCLOSURE FRONT WALL_Fixed, PART PDM REV: X-035, DRAWING PDM REV: X-020



LIGO CALIFORNIA INSTITUTE OF TECHNOLOGY
MASSACHUSETTS INSTITUTE OF TECHNOLOGY

SIZE	DWG. NO.	REV.
B	D1003206	v2
SCALE: 1:4	PROJECTION:	SHEET 2 OF 2