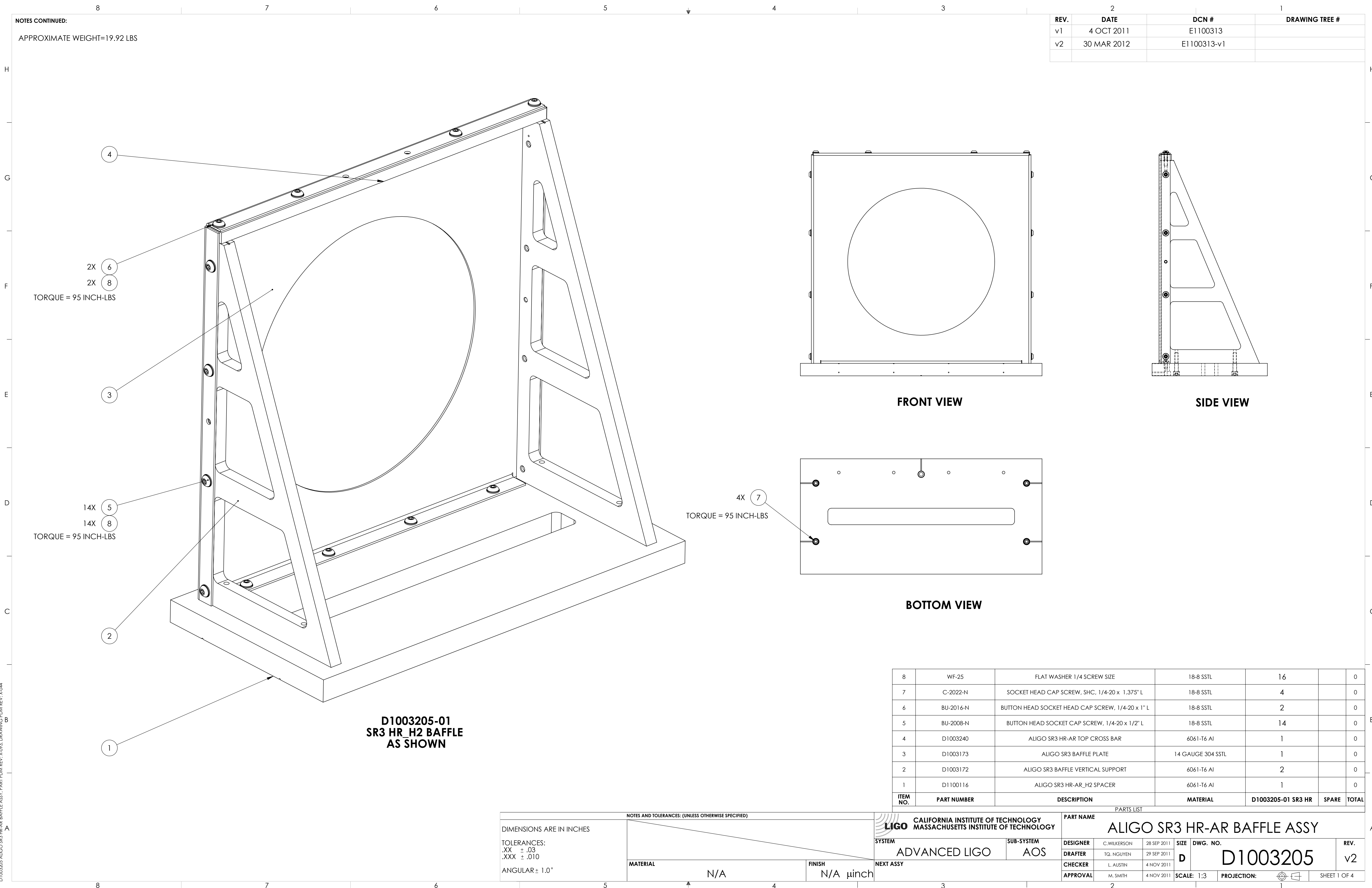


NOTES CONTINUED:
 APPROXIMATE WEIGHT=19.92 LBS

REV.	DATE	DCN #	DRAWING TREE #
v1	4 OCT 2011	E1100313	
v2	30 MAR 2012	E1100313-v1	



**D1003205-01
 SR3 HR_H2 BAFFLE
 AS SHOWN**

ITEM NO.	PART NUMBER	DESCRIPTION	MATERIAL	D1003205-01 SR3 HR	SPARE	TOTAL
8	WF-25	FLAT WASHER 1/4 SCREW SIZE	18-8 SSSL	16	0	0
7	C-2022-N	SOCKET HEAD CAP SCREW, SHC, 1/4-20 x 1.375" L	18-8 SSSL	4	0	0
6	BU-2016-N	BUTTON HEAD SOCKET HEAD CAP SCREW, 1/4-20 x 1" L	18-8 SSSL	2	0	0
5	BU-2008-N	BUTTON HEAD SOCKET CAP SCREW, 1/4-20 x 1/2" L	18-8 SSSL	14	0	0
4	D1003240	ALIGO SR3 HR-AR TOP CROSS BAR	6061-T6 Al	1	0	0
3	D1003173	ALIGO SR3 BAFFLE PLATE	14 GAUGE 304 SSSL	1	0	0
2	D1003172	ALIGO SR3 BAFFLE VERTICAL SUPPORT	6061-T6 Al	2	0	0
1	D1100116	ALIGO SR3 HR-AR_H2 SPACER	6061-T6 Al	1	0	0

NOTES AND TOLERANCES: (UNLESS OTHERWISE SPECIFIED)

DIMENSIONS ARE IN INCHES

TOLERANCES:
 .XX ± .03
 .XXX ± .010

ANGULAR ± 1.0°

MATERIAL	N/A	FINISH	N/A μinch
----------	-----	--------	-----------

LIGO CALIFORNIA INSTITUTE OF TECHNOLOGY
 MASSACHUSETTS INSTITUTE OF TECHNOLOGY

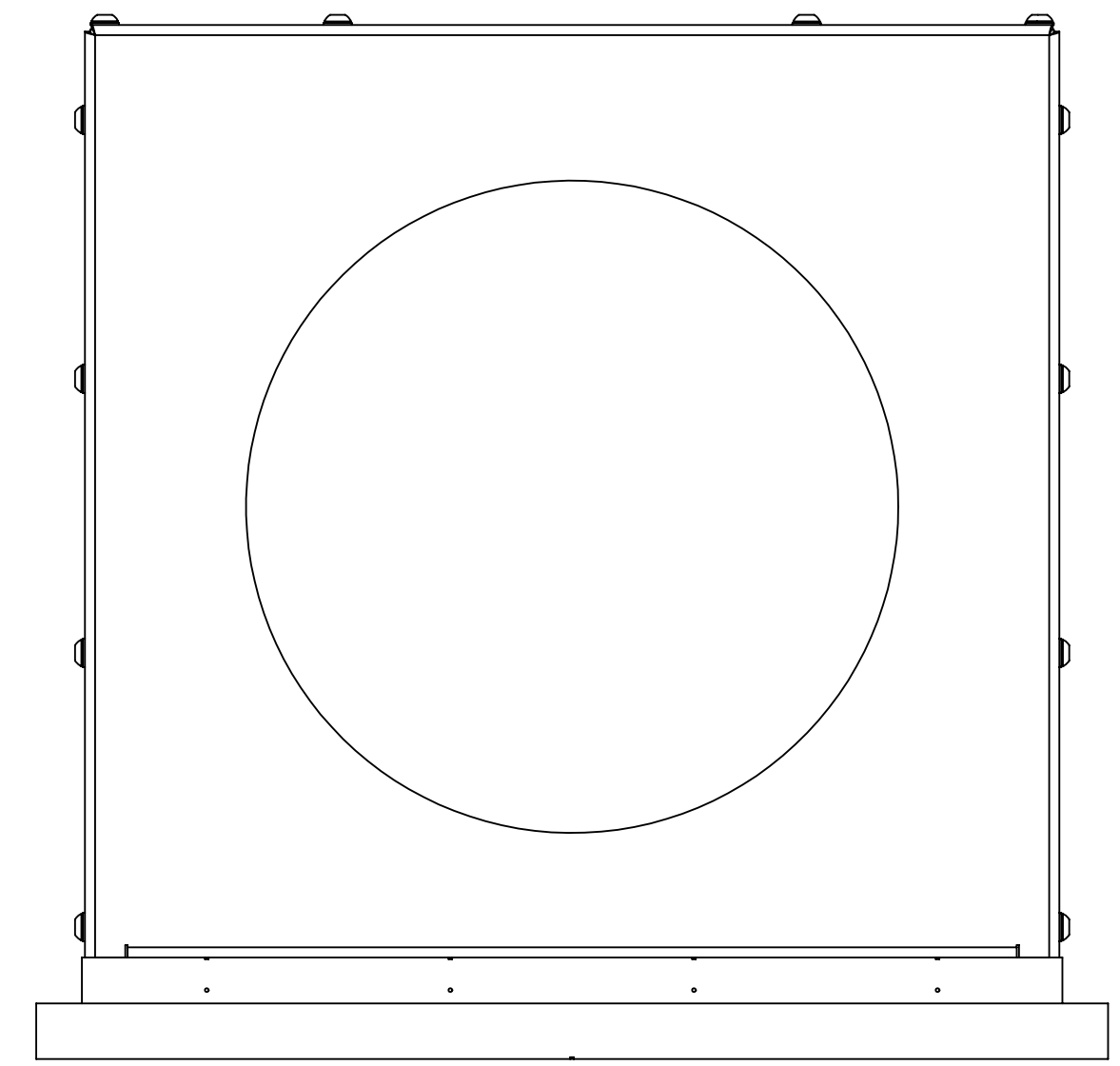
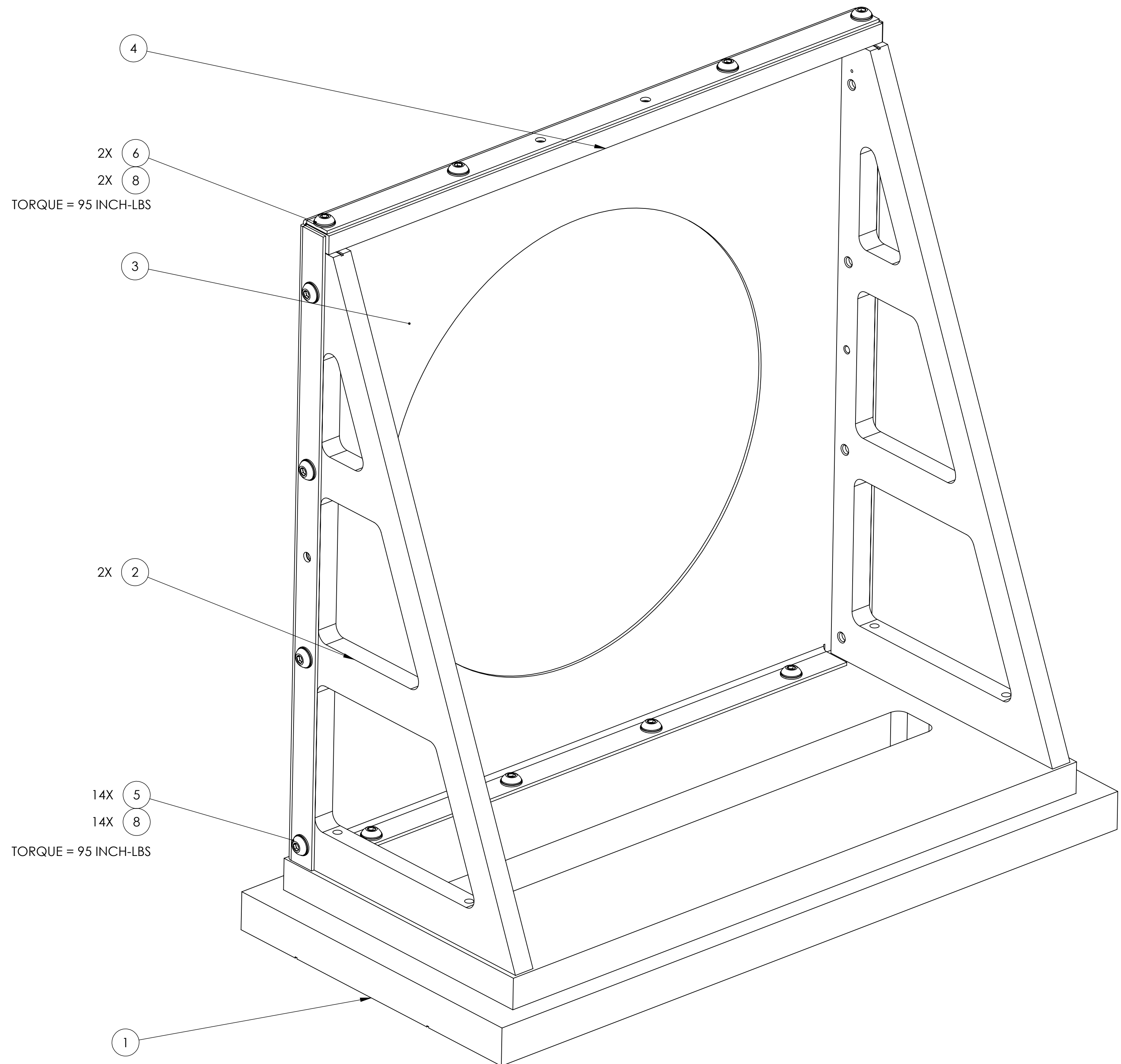
SYSTEM: **ADVANCED LIGO** SUB-SYSTEM: **AOS**

PART NAME: **ALIGO SR3 HR-AR BAFFLE ASSY**

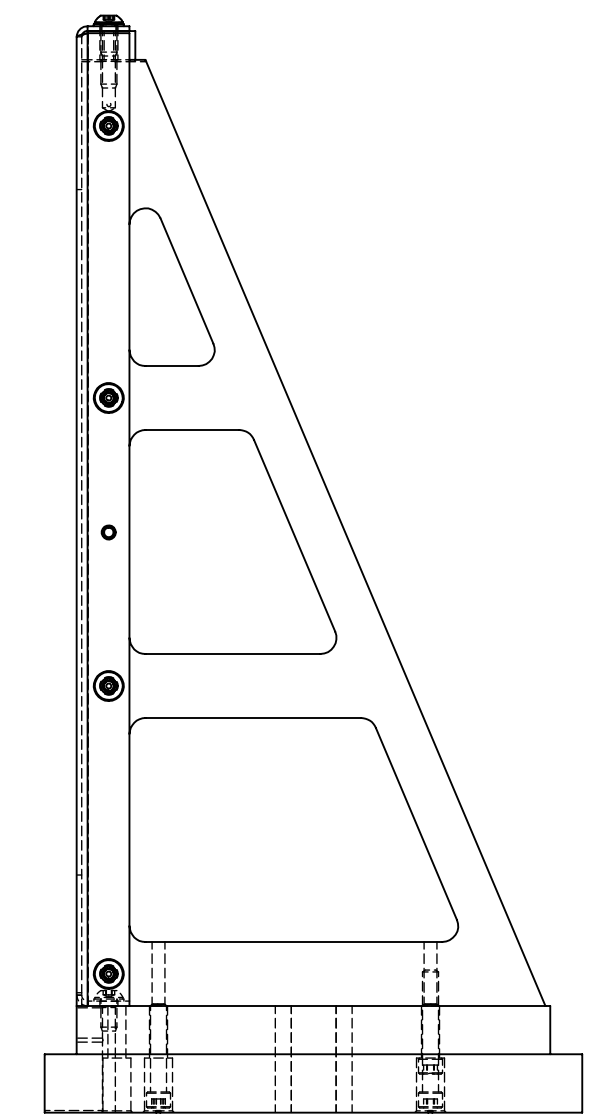
DESIGNER	C. WILKERSON	28 SEP 2011	SIZE	DWG. NO.	REV.
DRAFTER	TQ. NGUYEN	29 SEP 2011	D	D1003205	v2
CHECKER	L. AUSTIN	4 NOV 2011	SCALE: 1:3	PROJECTION:	SHEET 1 OF 4
APPROVAL	M. SMITH	4 NOV 2011			

D1003205-01 SR3 HR-AR BAFFLE ASSY PART PDM REV: X-093 DRAWING PDM REV: X-044

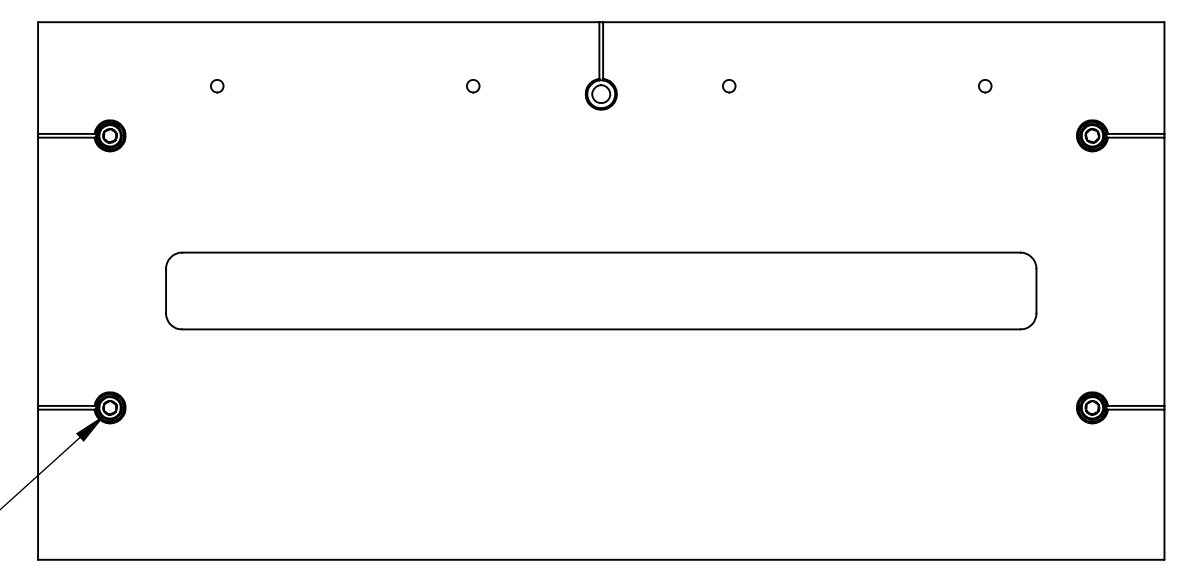
APPROXIMATE WEIGHT= 27.44 LBS.



FRONT VIEW



SIDE VIEW



BOTTOM VIEW

4X 7
TORQUE = 95 INCH-LBS

**D1003205-02
SR3 HR_H1-L1 BAFFLE
AS SHOWN**

ITEM NO.	PART NUMBER	DESCRIPTION	MATERIAL	QTY	SPARE	TOTAL
8	WF-25	FLAT WASHER 1/4 SCREW SIZE	18-8 SSSL	16	0	0
7	C-2022-N	SOCKET HEAD CAP SCREW, SHC, 1/4-20 x 1.375" L	18-8 SSSL	4	0	0
6	BU-2016-N	BUTTON HEAD SOCKET HEAD CAP SCREW, 1/4-20 x 1" L	18-8 SSSL	2	0	0
5	BU-2008-N	BUTTON HEAD SOCKET CAP SCREW, 1/4-20 x 1/2" L	18-8 SSSL	14	0	0
4	D1003240	ALIGO SR3 HR-AR TOP CROSS BAR	6061-T6 Al	1	0	0
3	D1003173	ALIGO SR3 BAFFLE PLATE	14 GAUGE 304 SSSL	1	0	0
2	D1003172	ALIGO SR3 BAFFLE VERTICAL SUPPORT	6061-T6 Al	2	0	0
1	D1100423	ALIGO SR3 HR-AR_H1-L1 SPACER	6061-T6 Al	1	0	0
				D1003205-02 SR3 HR_H1-L1		

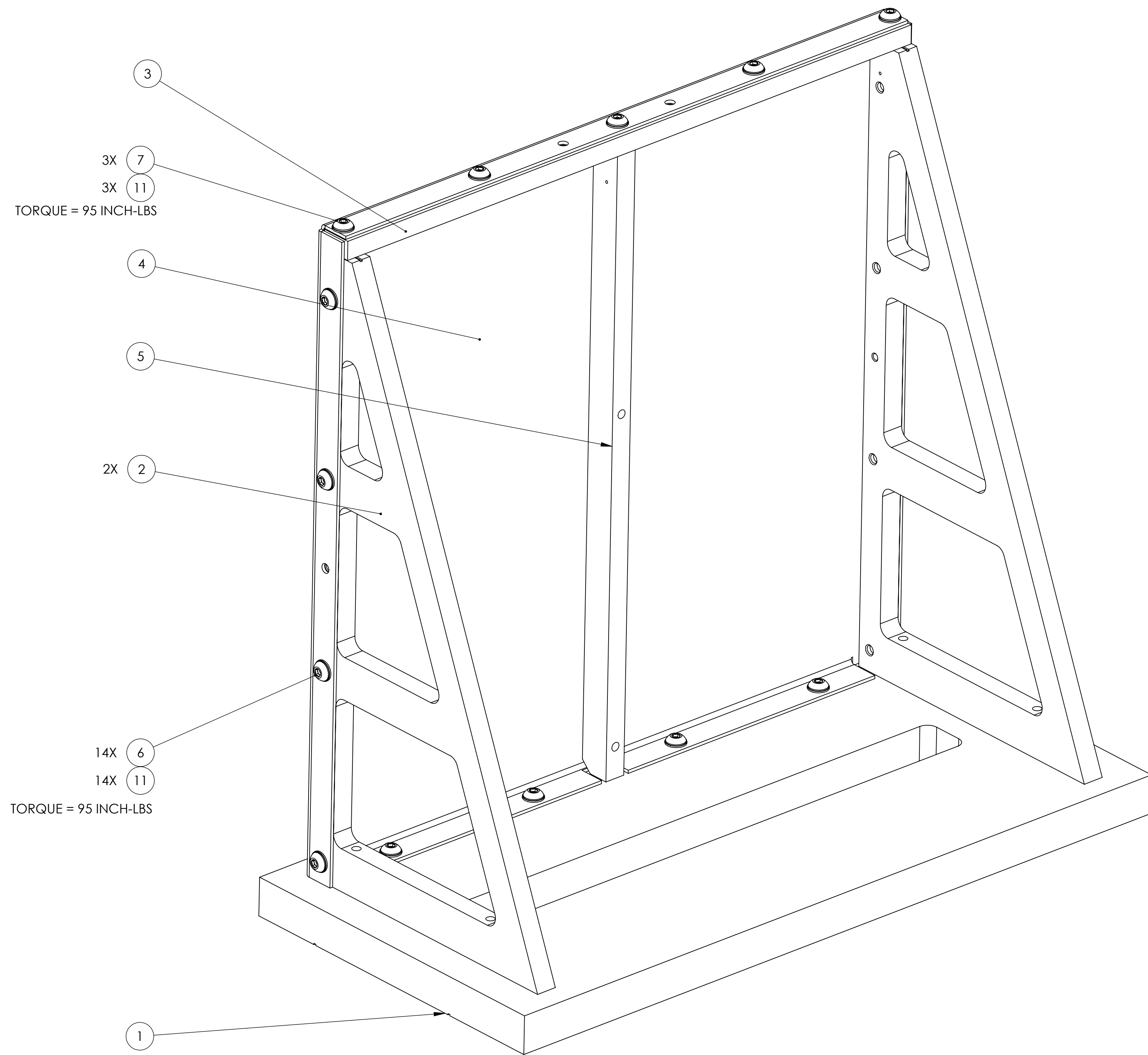
LIGO CALIFORNIA INSTITUTE OF TECHNOLOGY
MASSACHUSETTS INSTITUTE OF TECHNOLOGY

SIZE DWG. NO. **D1003205** REV. **v2**

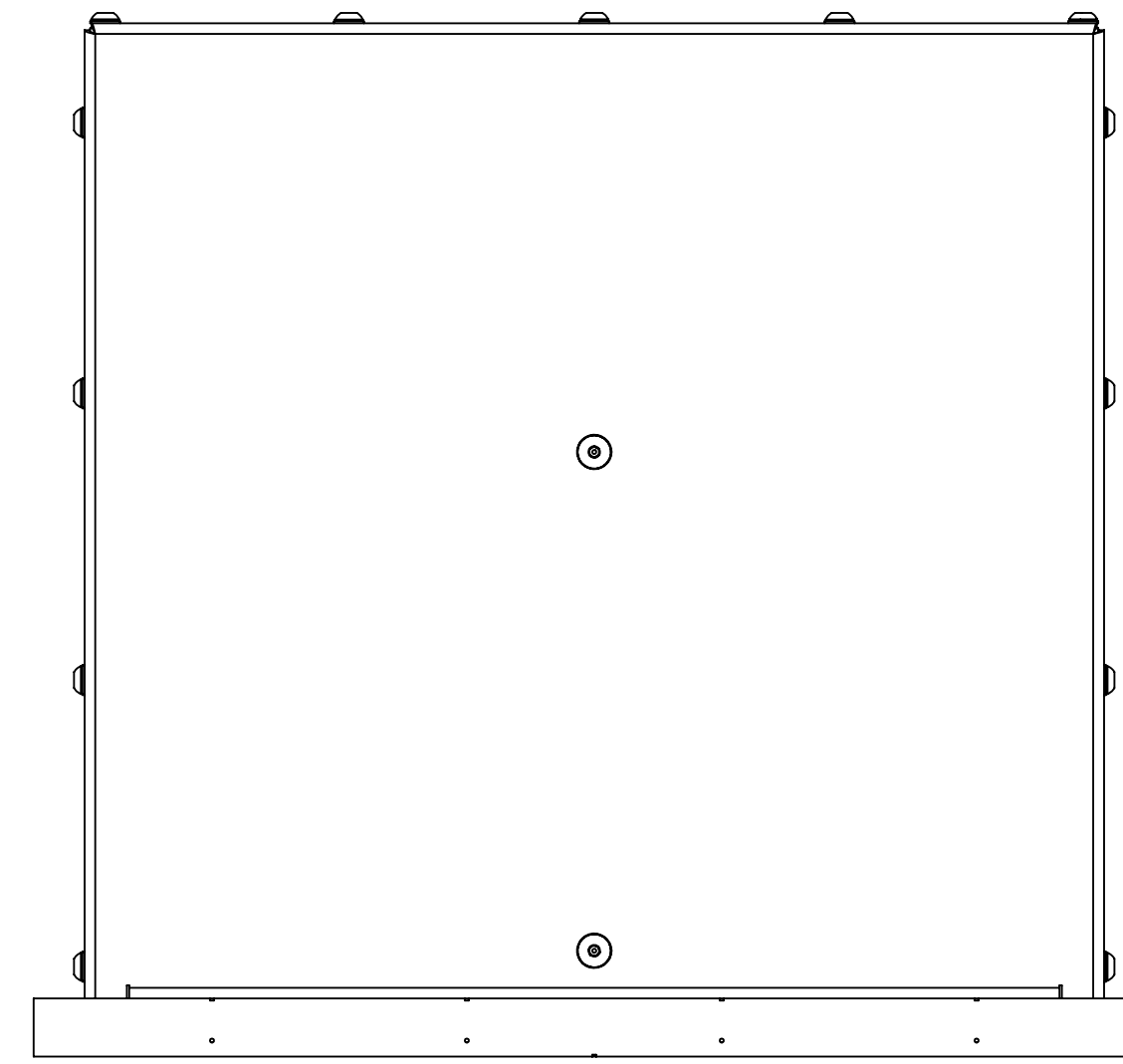
SCALE: 1:3 PROJECTION: SHEET 2 OF 4

D1003205 SR3 HR-AR BAFFLE ASSY PART PDM REV: X-093 DRAWING PDM REV: X-044

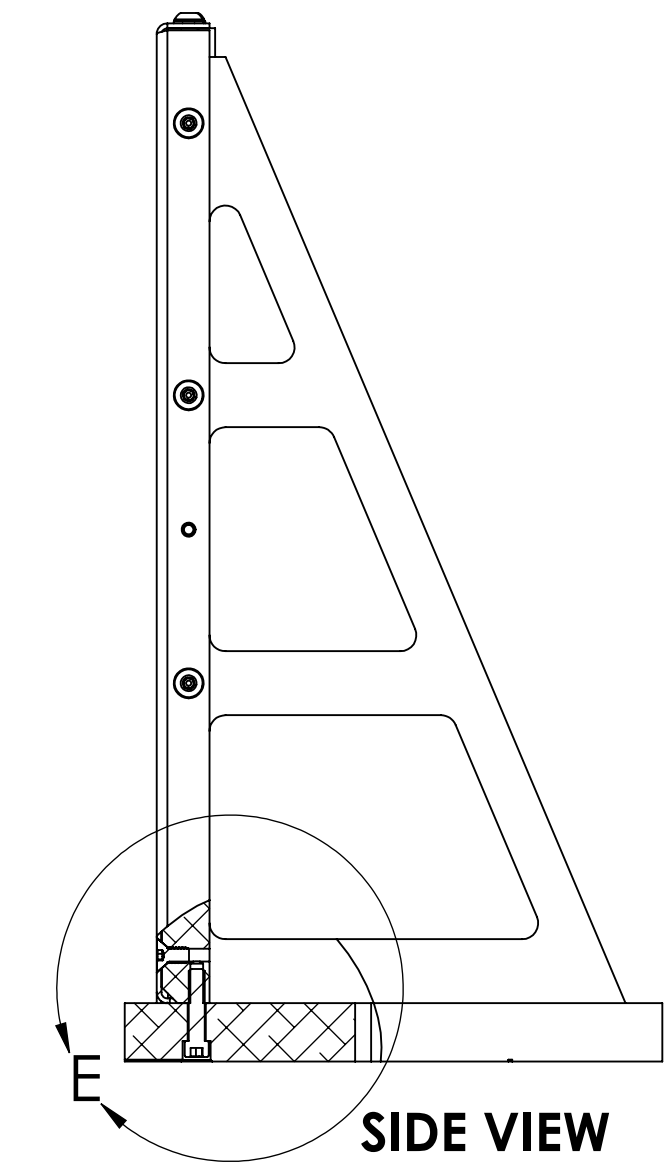
APPROXIMATE WEIGHT=22.45 LBS.



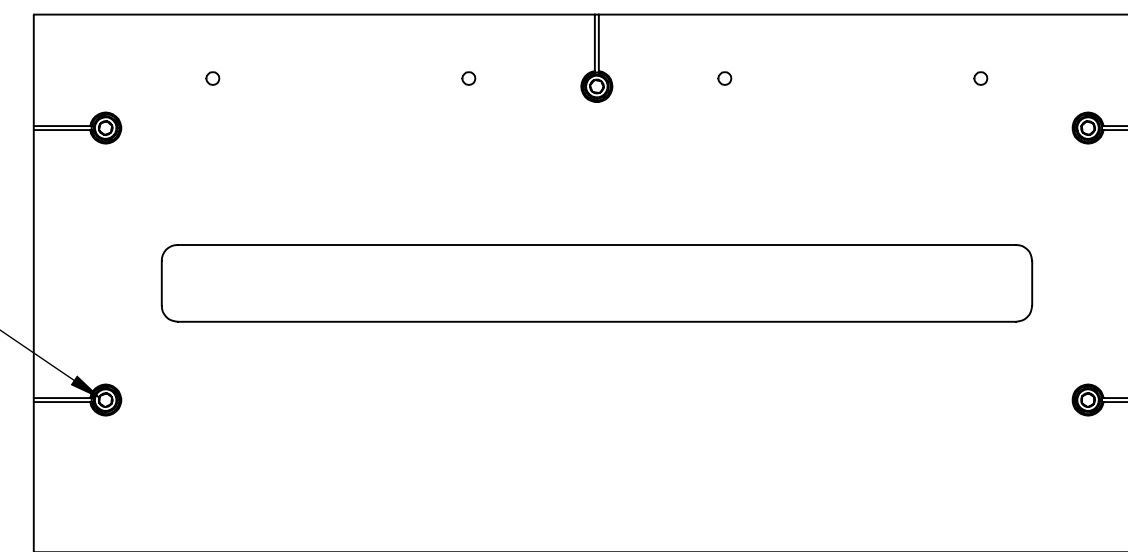
**D1003205-03
SR3 AR_H2 BAFFLE
AS SHOWN**



FRONT VIEW

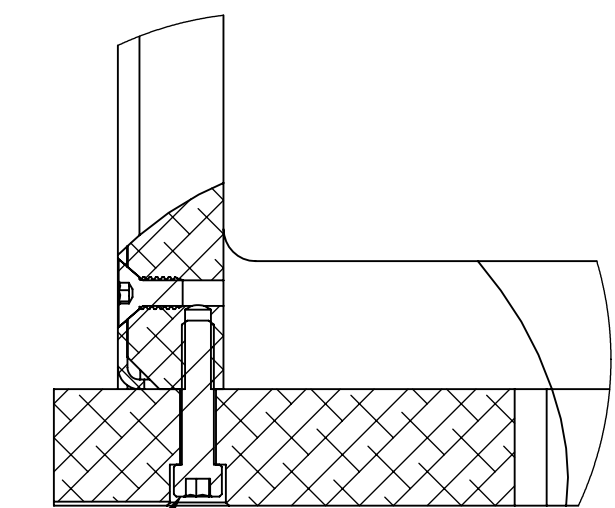


SIDE VIEW



BOTTOM VIEW

4X 8
TORQUE = 95 INCH-LBS



**DETAIL E
SCALE 2:3**

ITEM NO.	PART NUMBER	DESCRIPTION	MATERIAL	D1003205-02 SR3 AR	SPARE	TOTAL
11	WF-25	FLAT WASHER 1/4 SCREW SIZE	18-8 SSSL	17	0	0
10	FA-2008-N	FLAT HEAD SOCKET CAP SCREW, 1/4-20 x 1/2" L	18-8 SSSL	2	0	0
9	C-2018-N	SOCKET HEAD CAP SCREW, SHC, 1/4-20 x 1.125" L	18-8 SSSL	1	0	0
8	C-2022-N	SOCKET HEAD CAP SCREW, SHC, 1/4-20 x 1.375" L	18-8 SSSL	4	0	0
7	BU-2016-N	BUTTON HEAD SOCKET HEAD CAP SCREW, 1/4-20 x 1" L	18-8 SSSL	3	0	0
6	BU-2008-N	BUTTON HEAD SOCKET CAP SCREW, 1/4-20 x 1/2" L	18-8 SSSL	14	0	0
5	D1100021	ALIGO SR3 AR PLATE SUPPORT	6061-T6 AI	1	0	0
4	D1101826	ALIGO SR3 BAFFLE PLATE	14 GAUGE 304 SSSL	1	0	0
3	D1003240	ALIGO SR3 HR-AR TOP CROSS BAR	6061-T6 AI	1	0	0
2	D1003172	ALIGO SR3 BAFFLE VERTICAL SUPPORT	6061-T6 AI	2	0	0
1	D1100116	ALIGO SR3 HR-AR_H2 SPACER	6061-T6 AI	1	0	0
				D1003205-02 SR3 AR	SPARE	TOTAL

PARTS LIST

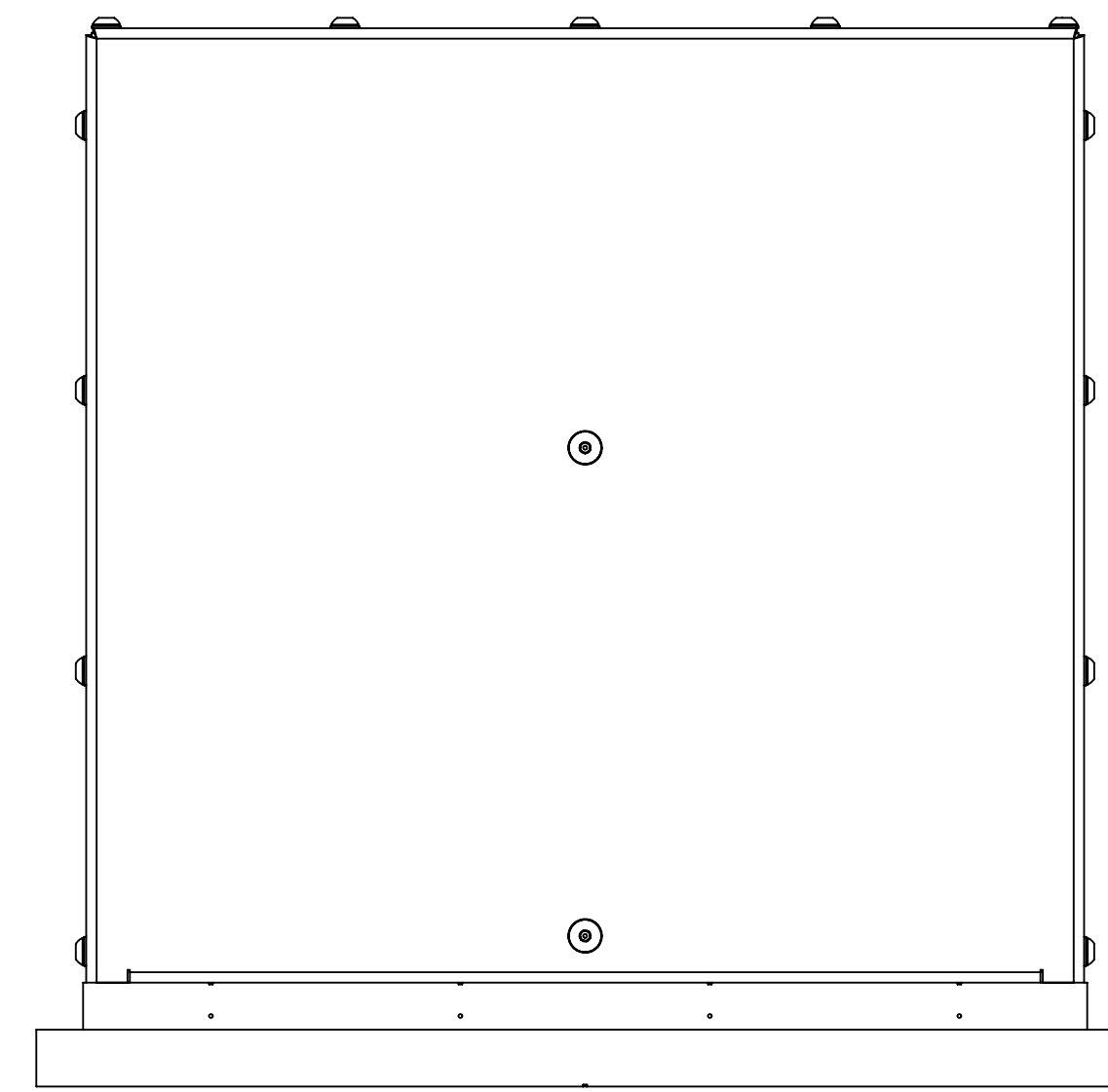
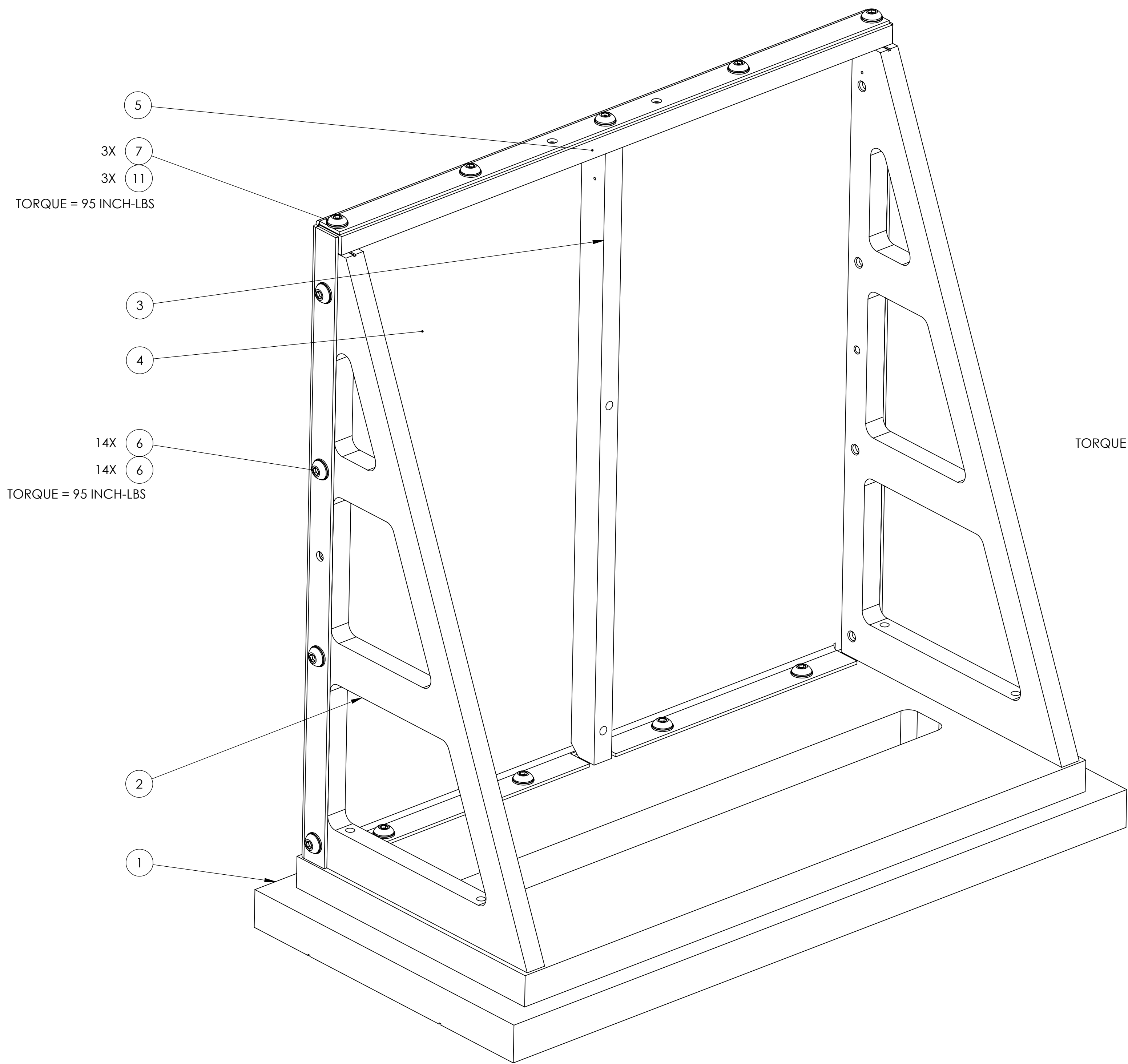
LIGO CALIFORNIA INSTITUTE OF TECHNOLOGY
MASSACHUSETTS INSTITUTE OF TECHNOLOGY

SIZE DWG. NO. **D1003205** REV. **v2**

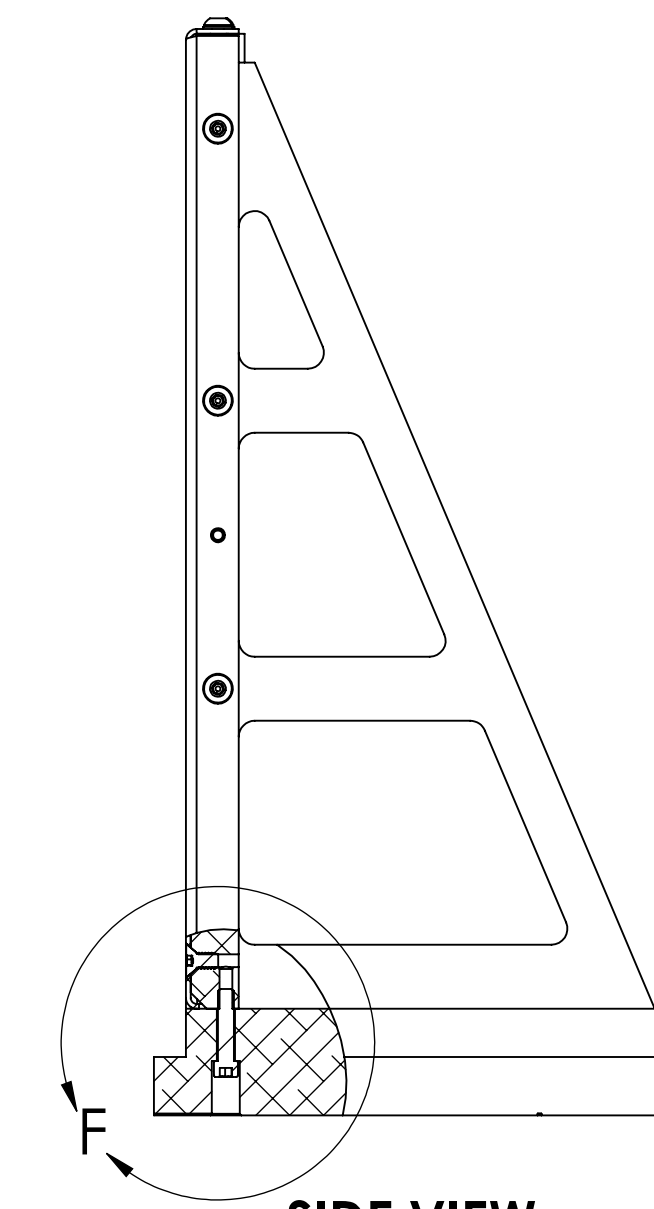
SCALE: 1:3 PROJECTION: SHEET 3 OF 4

D1003205-03 SR3 HR-AR BAFFLE ASSY PART PDM REV: X-093 DRAWING PDM REV: X-044

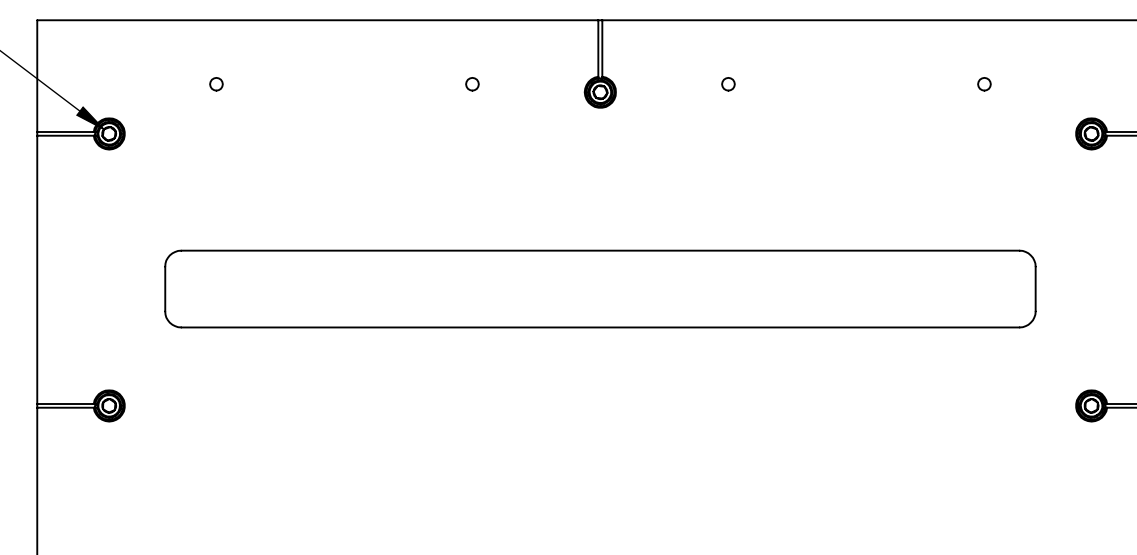
APPROXIMATE WEIGHT=29.97 LBS.



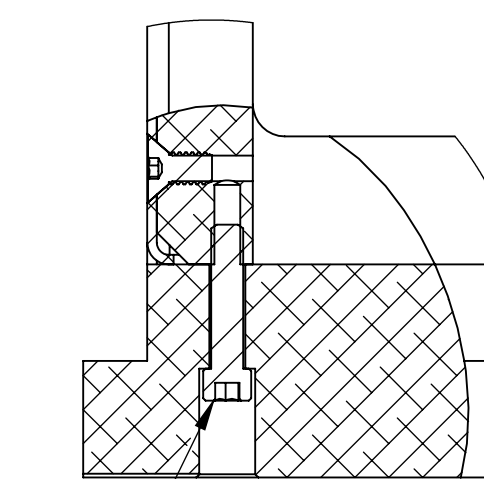
FRONT VIEW



SIDE VIEW



BOTTOM VIEW



9
DETAIL F
SCALE 2 : 3

**D1003205-04
SR3 AR_H1-L1 BAFFLE
AS SHOWN**

ITEM NO.	PART NUMBER	DESCRIPTION	MATERIAL	D1003205-04 SR3_AR_H1-L1	SPARE	TOTAL
11	WF-25	FLAT WASHER 1/4 SCREW SIZE	18-8 SSSL	17		0
10	FA-2008-N	FLAT HEAD SOCKET CAP SCREW, 1/4-20 x 1/2" L	18-8 SSSL	2		0
9	C-2018-N	SOCKET HEAD CAP SCREW, SHC, 1/4-20 x 1.125" L	18-8 SSSL	1		0
8	C-2022-N	SOCKET HEAD CAP SCREW, SHC, 1/4-20 x 1.375" L	18-8 SSSL	4		0
7	BU-2016-N	BUTTON HEAD SOCKET HEAD CAP SCREW, 1/4-20 x 1" L	18-8 SSSL	3		0
6	BU-2008-N	BUTTON HEAD SOCKET CAP SCREW, 1/4-20 x 1/2" L	18-8 SSSL	14		0
5	D1003240	ALIGO SR3 HR-AR TOP CROSS BAR	6061-T6 AI	1		0
4	D1101826	ALIGO SR3 BAFFLE PLATE	14 GAUGE 304 SSSL	1		0
3	D1100021	ALIGO SR3 AR PLATE SUPPORT	6061-T6 AI	1		0
2	D1003172	ALIGO SR3 BAFFLE VERTICAL SUPPORT	6061-T6 AI	2		0
1	D1100423	ALIGO SR3 HR-AR_H1-L1 SPACER	6061-T6 AI	1		0
PARTS LIST						

LIGO CALIFORNIA INSTITUTE OF TECHNOLOGY
MASSACHUSETTS INSTITUTE OF TECHNOLOGY

SIZE DWG. NO. **D1003205** REV. **v2**

SCALE: 1:3 PROJECTION: SHEET 4 OF 4

D1003205-04 SR3 AR_H1-L1 BAFFLE ASSEMBLY PART PDM REV: X-093 DRAWING PDM REV: X-044