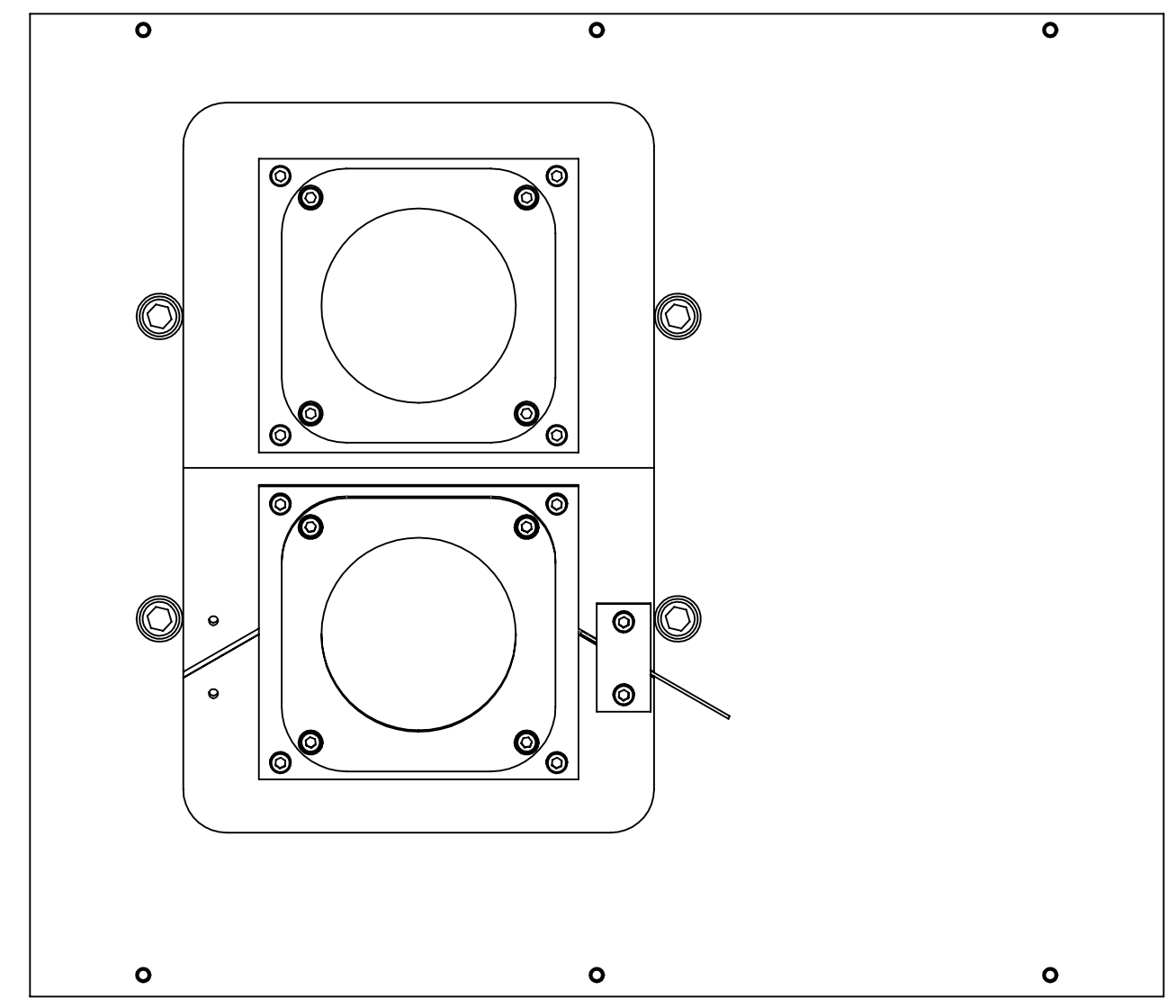
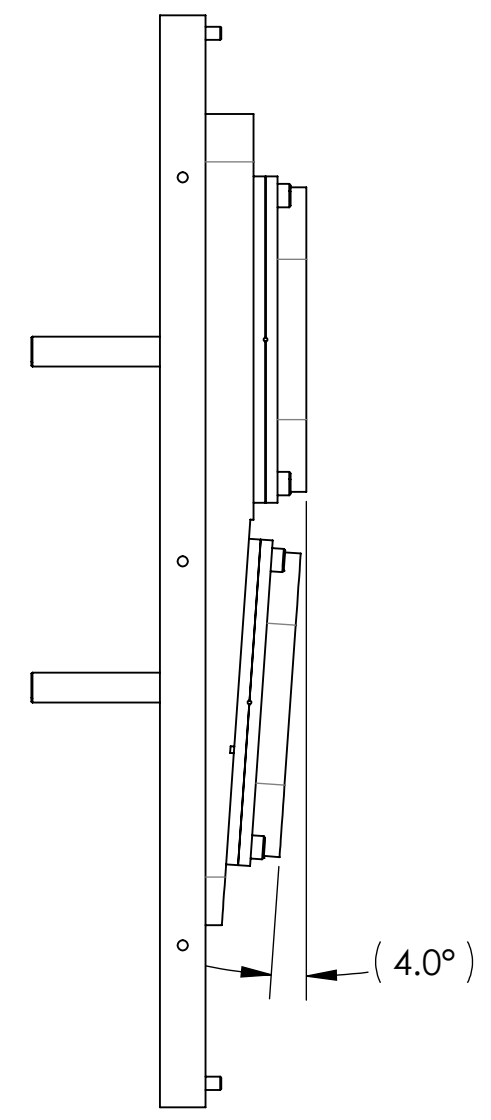
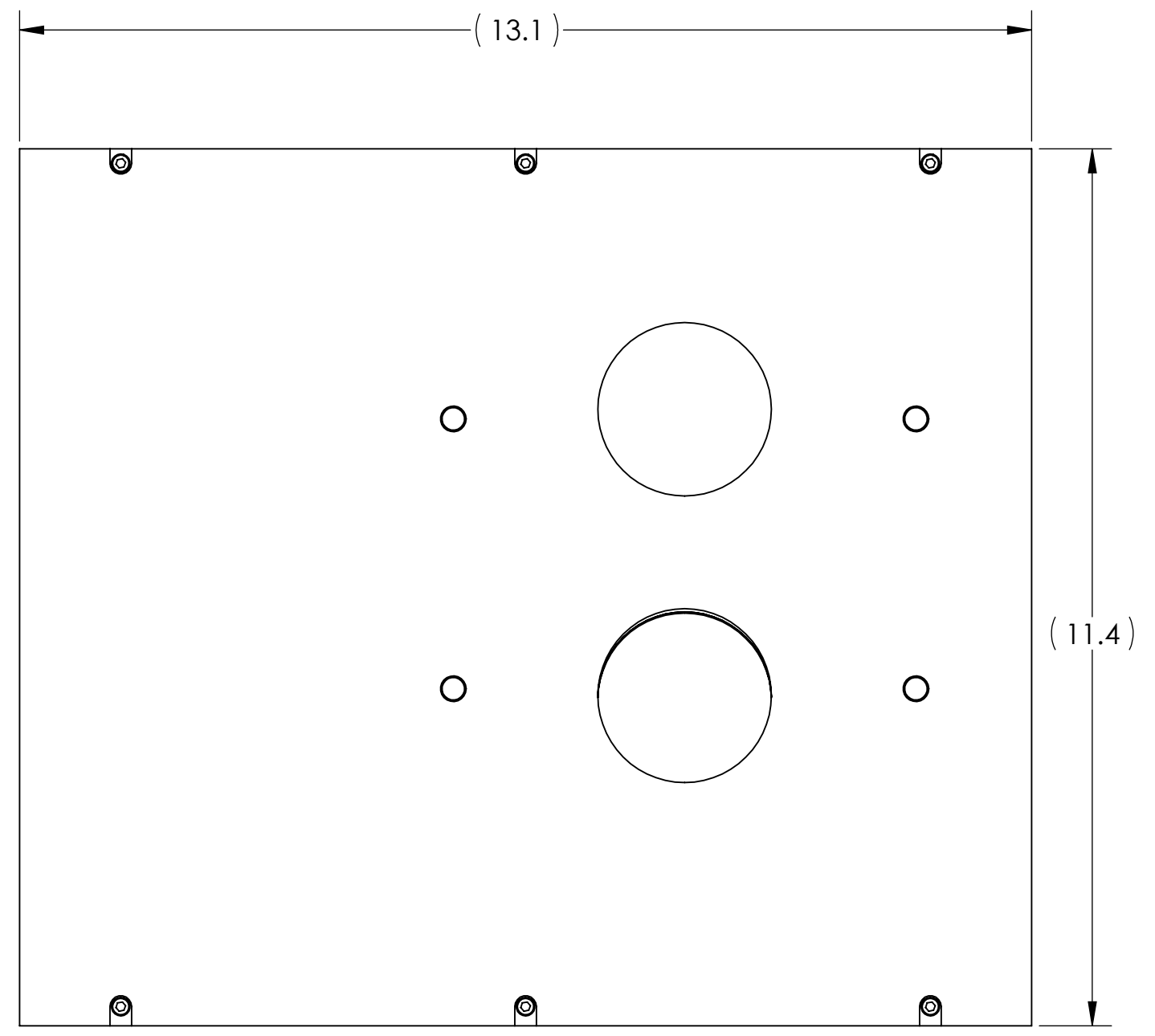


NOTES CONTINUED:

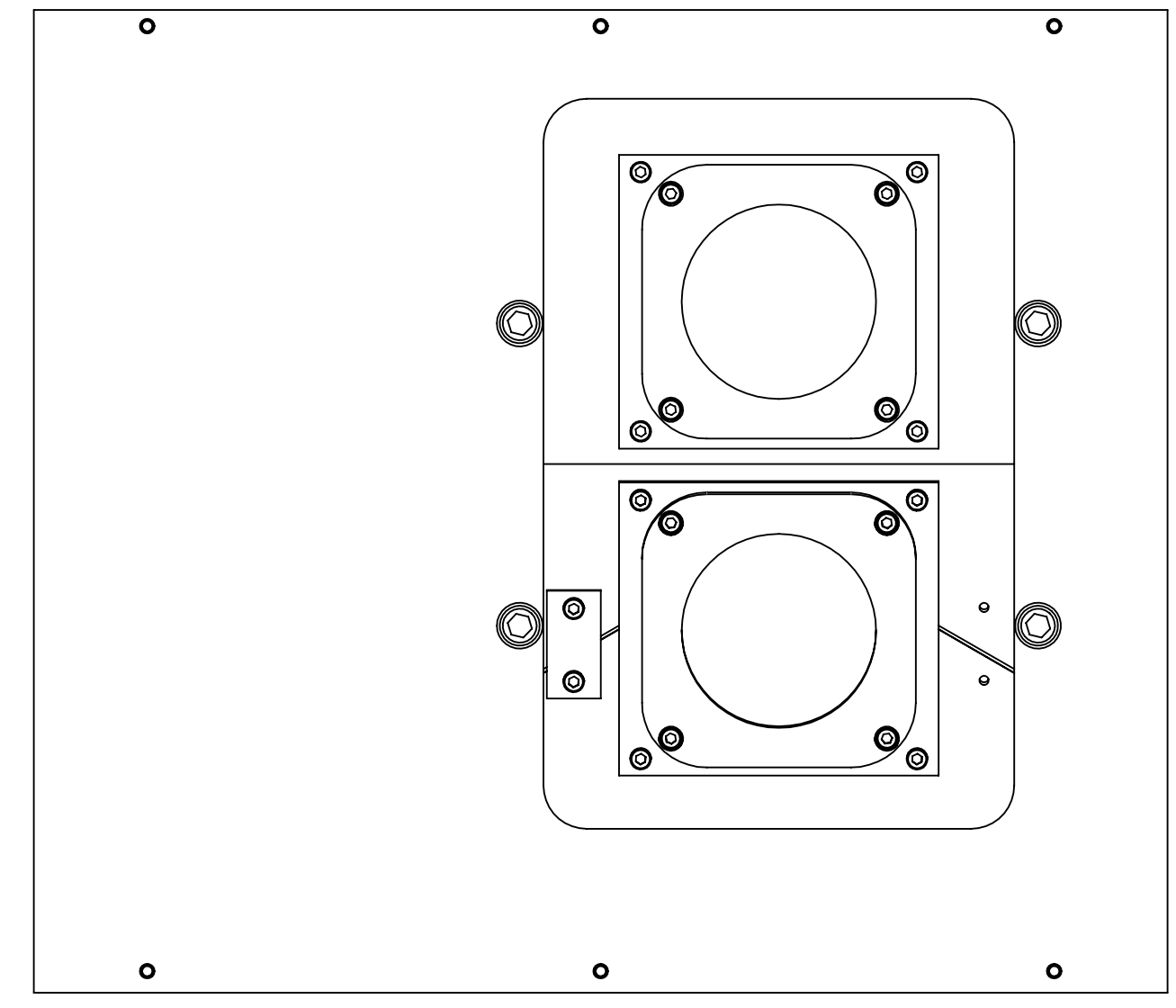
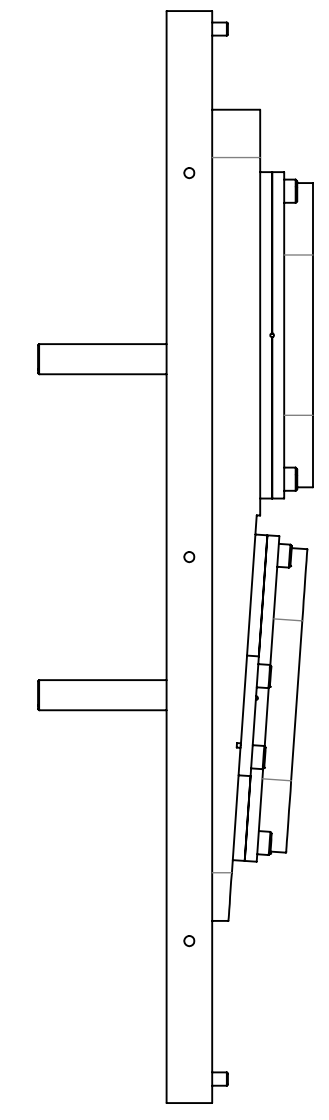
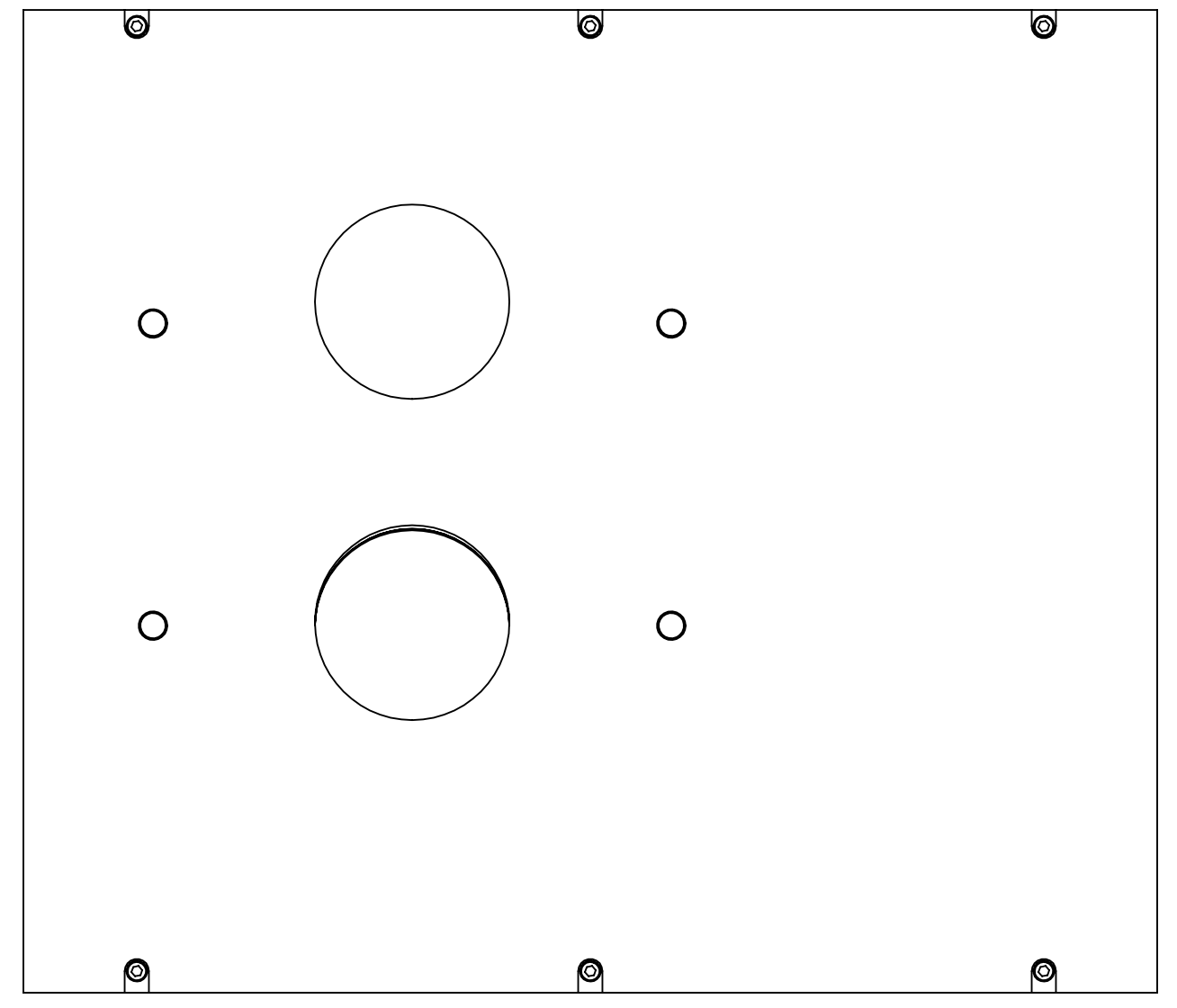
- 5 TORQUE TO 5 IN-LB [ .5 N-m]
- 6 TORQUE TO 62 IN-LB [7 N-m]
- 7 APPROXIMATE WEIGHT = 3.451

TYPE (CONFIGURATION)	DESCRIPTION
-01	aLIGO, TCS, H2, X-ARM (SHOWN TOP)
-02	aLIGO, TCS, H2, Y-ARM (MIRROR OF -01, SHOWN BOTTOM)

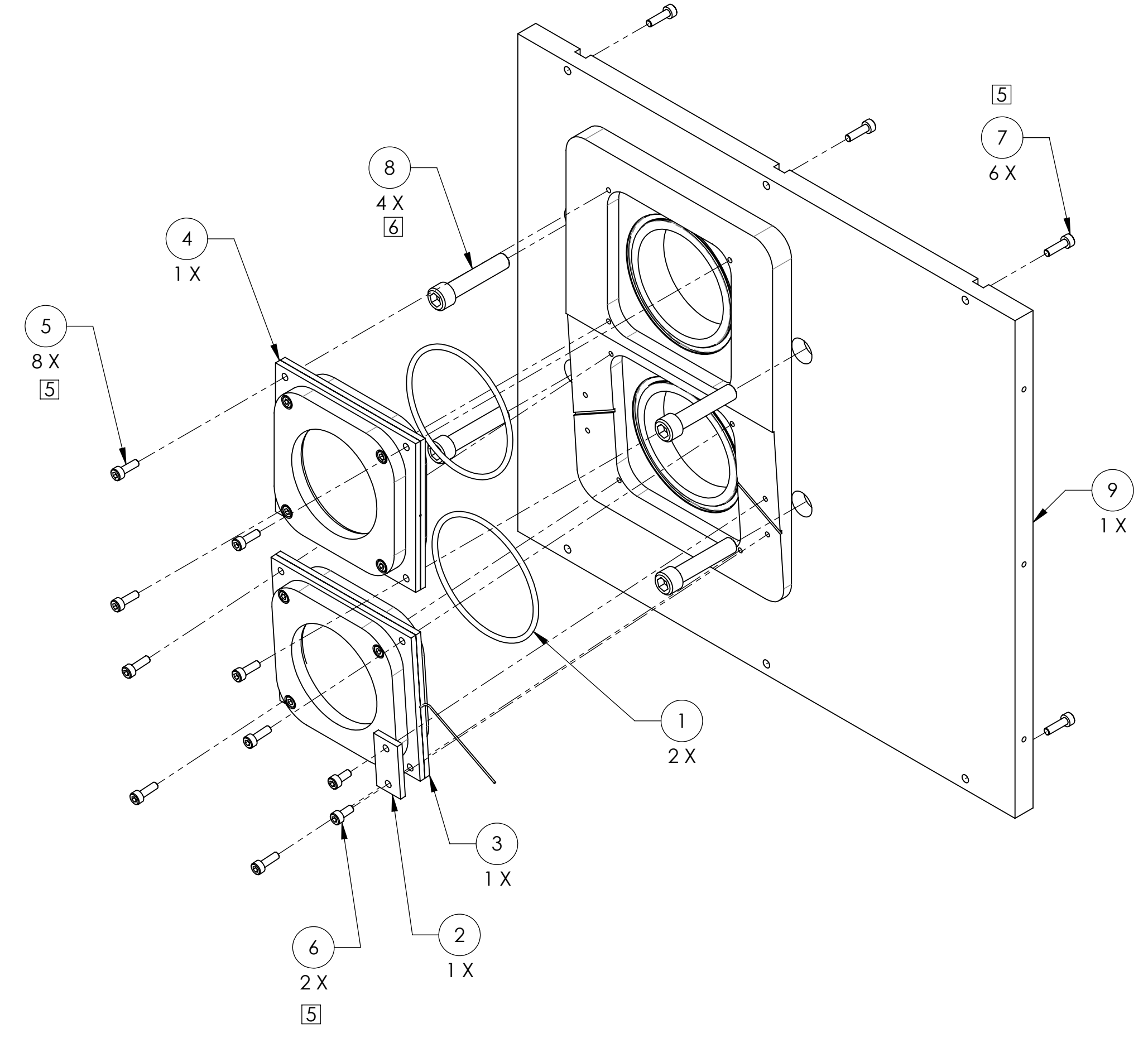
REV.	DATE	DCN #	DRAWING TREE #
v2	27 JUL 2011	E1100655-v1	E1100656-v1



TYPE -01



TYPE -02



ITEM NO.	PART NUMBER	DESCRIPTION	MATERIAL	REQ/-01	REQ/-02	SPARE	TOTAL
10	D1003206-02	VP ENCLOSURE FRONT WALL	6061 Alloy	-	1	0	1
9	D1003206-01	VP ENCLOSURE FRONT WALL	6061 Alloy	1	-	0	1
8	C-1824-N	SHCS 5/16-18 X 1.5	18-8 SSTL	4	4	2	10
7	C-608-N	SHCS #6-32 X 0.5	18-8 SSTL	6	6	4	16
6	C-605-N	SHCS #6-32 X 0.3125	18-8 SSTL	2	2	2	6
5	C-607-N	SHCS #6-32 X 0.4375	18-8 SSTL	8	8	4	20
4	D1100494	OPTICAL WINDOW CLAM SHELL ASSY	N/A	1	1	0	2
3	D1100493	ZNSE WINDOW CLAM SHELL ASSY	N/A	1	1	0	2
2	D1100413	STRESS RELIEF BAR	6061 Alloy	1	1	2	4
1	D080631	O-RING, 3 IN VIEWPORTS	VITON	2	2	1	5

PARTS LIST

DIMENSIONS ARE IN INCHES		NOTES AND TOLERANCES: (UNLESS OTHERWISE SPECIFIED)	
TOLERANCES: .XX ± .01 .XXX ± .005		1. INTERPRET DRAWING PER ASME Y14.5-1994. 2. REMOVE ALL SHARP EDGES, .005-.015, FOR MACHINED PARTS. ROUND ALL EDGES APPROXIMATELY R.02 FOR SHEET METAL PARTS. 3. DO NOT SCALE FROM DRAWING. 4. ALL MACHINING FLUIDS MUST BE FULLY SYNTHETIC, FULLY WATER SOLUBLE AND FREE OF SULFUR, SILICONE, AND CHLORINE.	
ANGULAR ± °		MATERIAL	FINISH
		N/A	N/A μinch

CALIFORNIA INSTITUTE OF TECHNOLOGY MASSACHUSETTS INSTITUTE OF TECHNOLOGY		PART NAME <b>VP ENCLOSURE FRONT COVER ASSY, H2 CO2P</b>	
SYSTEM	ADVANCED LIGO	SUB-SYSTEM	AOS
NEXT ASSY	D1003193	DESIGNER	A. COLE 02 DEC 2010
		DRAFTER	A. LYNCH 11 JUL 2011
		CHECKER	M. JACOBSON 27 JUL 2011
		APPROVAL	P. WILLEMS 18 JUL 2011
SIZE	D	DWG. NO.	<b>D1003204</b>
REV.	v2	SCALE:	1:2
		PROJECTION:	
		SHEET 1 OF 1	

D1003204\_VP ENCLOSURE FRONT COVER ASSY, CO2P, PART FROM REV. X-02, DRAWING FROM REV. X-021