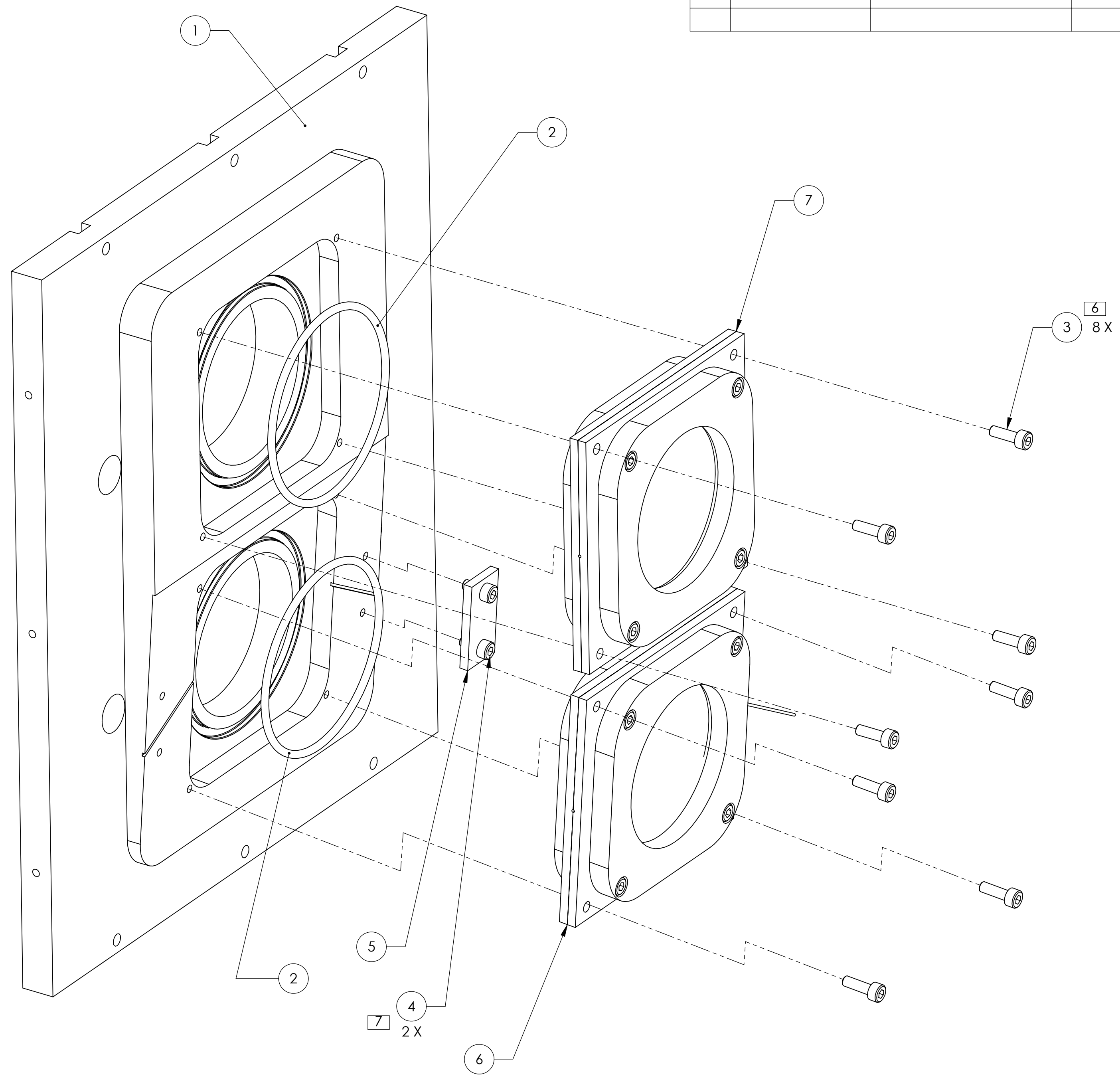
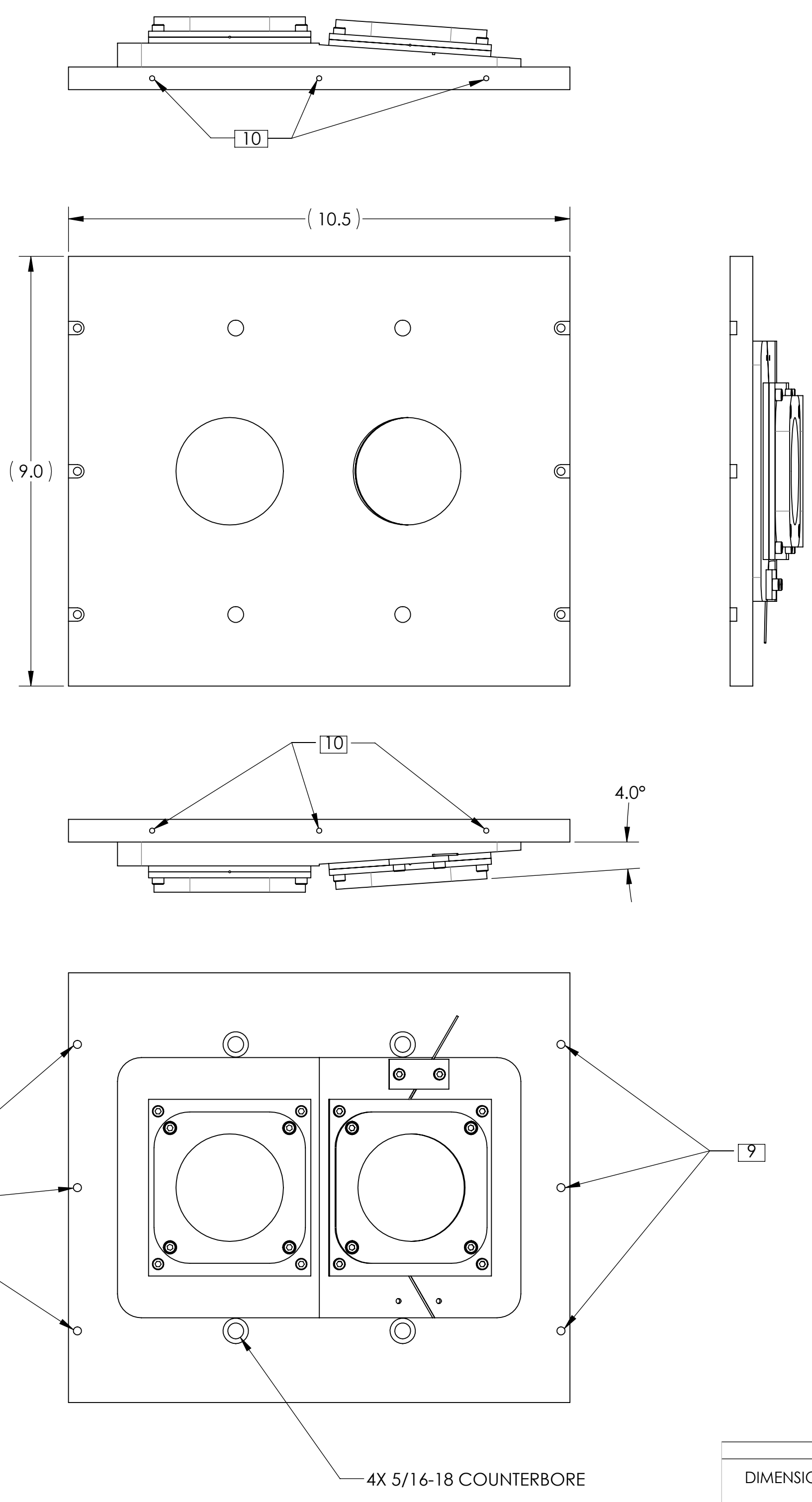


NOTES CONTINUED:

5) SCRIBE, ENGRAVE, LASER MARK OR MECHANICALLY STAMP (NO DYES OR INKS) A UNIQUE THREE DIGIT SERIAL NUMBER & REVISION NUMBER ON EACH PART. SERIAL NUMBERS START AT 001 FOR THE FIRST ARTICLE AND PROCEED CONSECUTIVELY. BAG AND TAG PARTS WITH THEIR DRAWING PART NUMBER, REVISION, VARIANT OR TYPE (IF APPLICABLE), AND QUANTITY. IF PARTS ARE TOO SMALL TO SCRIBE, BAGGING AND TAGGING ALONE IS SUFFICIENT.
 EXAMPLE (PART): 001-v1
 EXAMPLE (TAG): DXXXXXX-VY, TYPE-XX, QTY: TBD

6) TORQUE TO 2.5 IN-LB
 7) TORQUE TO 7.5 IN-LB
 8) INTERFACE TO D1003214
 9) INTERFACE TO D1003221
 10) INTERFACE TO D1003210 OR D1003215
 11) APPROXIMATE WEIGHT = 6.215 LB.

REV.	DATE	DCN #	DRAWING TREE #



ITEM NO.	PART NUMBER	DESCRIPTION	MATERIAL	REQ	SPARE	TOTAL
7	D1100494	OPTICAL WINDOW CLAM SHELL ASSY	N/A	1		1
6	D1100493	ZNSE WINDOW CLAM SHELL ASSY	N/A	1		1
5	D1100413	STRESS RELIEF BAR	6061 Alloy	1		1
4	C-605-N	SCREW, SOCKET HEAD CAP, #6-32 UNC-2A X 0.3125 LONG, FULLY THREADED	18-8 SSTL	2	2	4
3	C-607-N	SCREW, SOCKET HEAD CAP, #6-32 UNC-2A X 0.4375 LONG, FULLY THREADED	18-8 SSTL	8	2	10
2	D080631	BUNA-N, DUROMETER 70 SHORE A, ORING-146, MARCO RUBBER #B1000-146	NITRILE	2	2	4
1	D1003206	VP ENCLOSURE FRONT WALL	6061 Alloy	1		1

NOTES AND TOLERANCES: (UNLESS OTHERWISE SPECIFIED)

- INTERPRET DRAWING PER ASME Y14.5-1994.
- REMOVE ALL SHARP EDGES, .005-.015, FOR MACHINED PARTS. ROUND ALL EDGES APPROXIMATELY R.02 FOR SHEET METAL PARTS.
- DO NOT SCALE FROM DRAWING.
- ALL MACHINING FLUIDS MUST BE FULLY SYNTHETIC, FULLY WATER SOLUBLE AND FREE OF SULFUR, SILICONE, AND CHLORINE.

DIMENSIONS ARE IN INCHES
 TOLERANCES:
 .XX ± .01
 .XXX ± .005
 ANGULAR ± 0.5°

MATERIAL: N/A FINISH: N/A μinch

SYSTEM: ADVANCED LIGO SUB-SYSTEM: AOS NEXT ASSY: D1003193

PART NAME: VP ENCLOSURE FRONT COVER ASSY, CO2P

DESIGNER	A. COLE	02 DEC 2010	SIZE	DWG. NO.	REV.
DRAFTER	A. LANGLEY	17 MAR 2011	D	D1003204	v1
CHECKER	M. JACOBSON	29 MAR 2011	SCALE: 1:4	PROJECTION:	SHEET 1 OF 1
APPROVAL	P. WILLEMS	30 MAR 2011			

D1003204_VP ENCLOSURE FRONT COVER ASSY, CO2P, PART FROM REV. X.023, DRAWING FROM REV. X.004