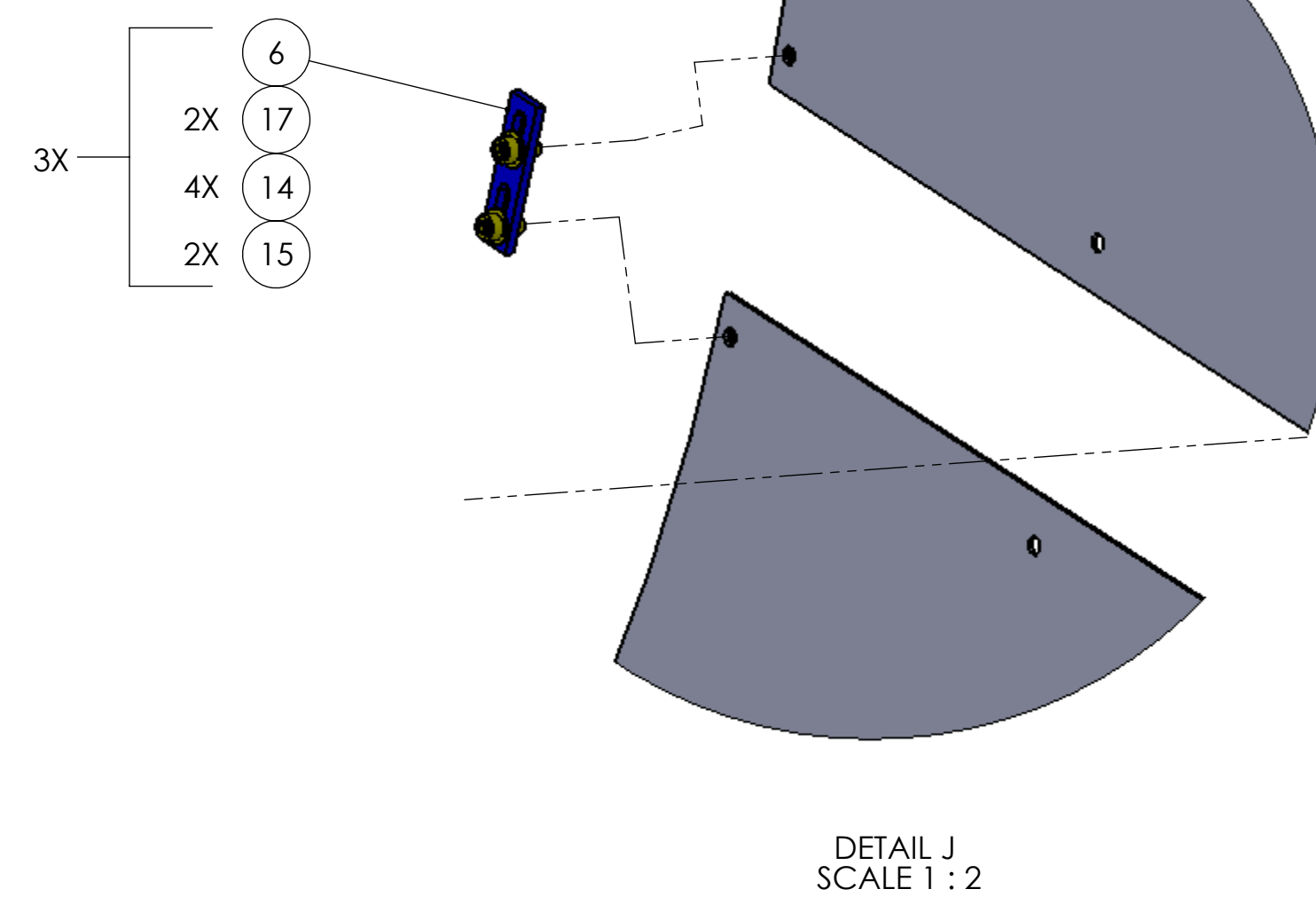
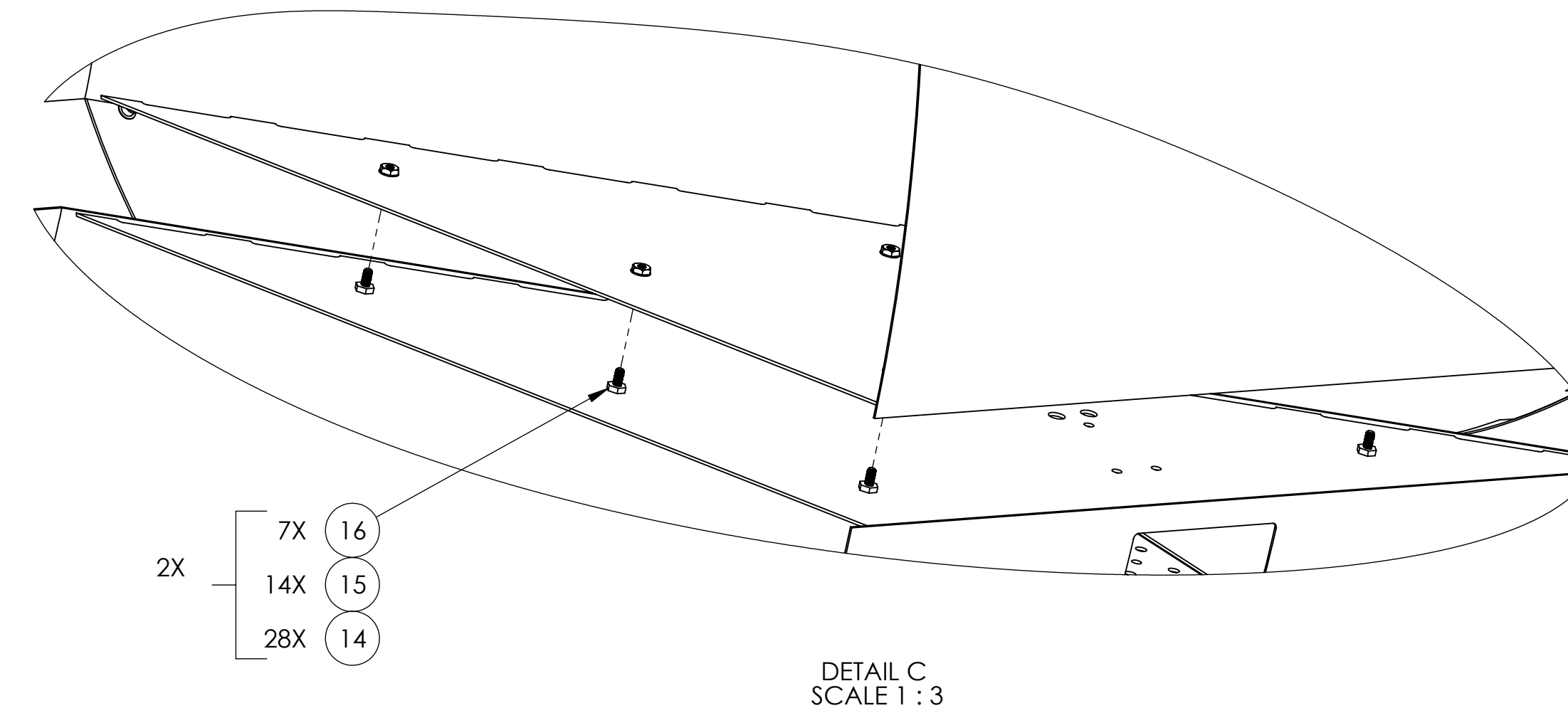
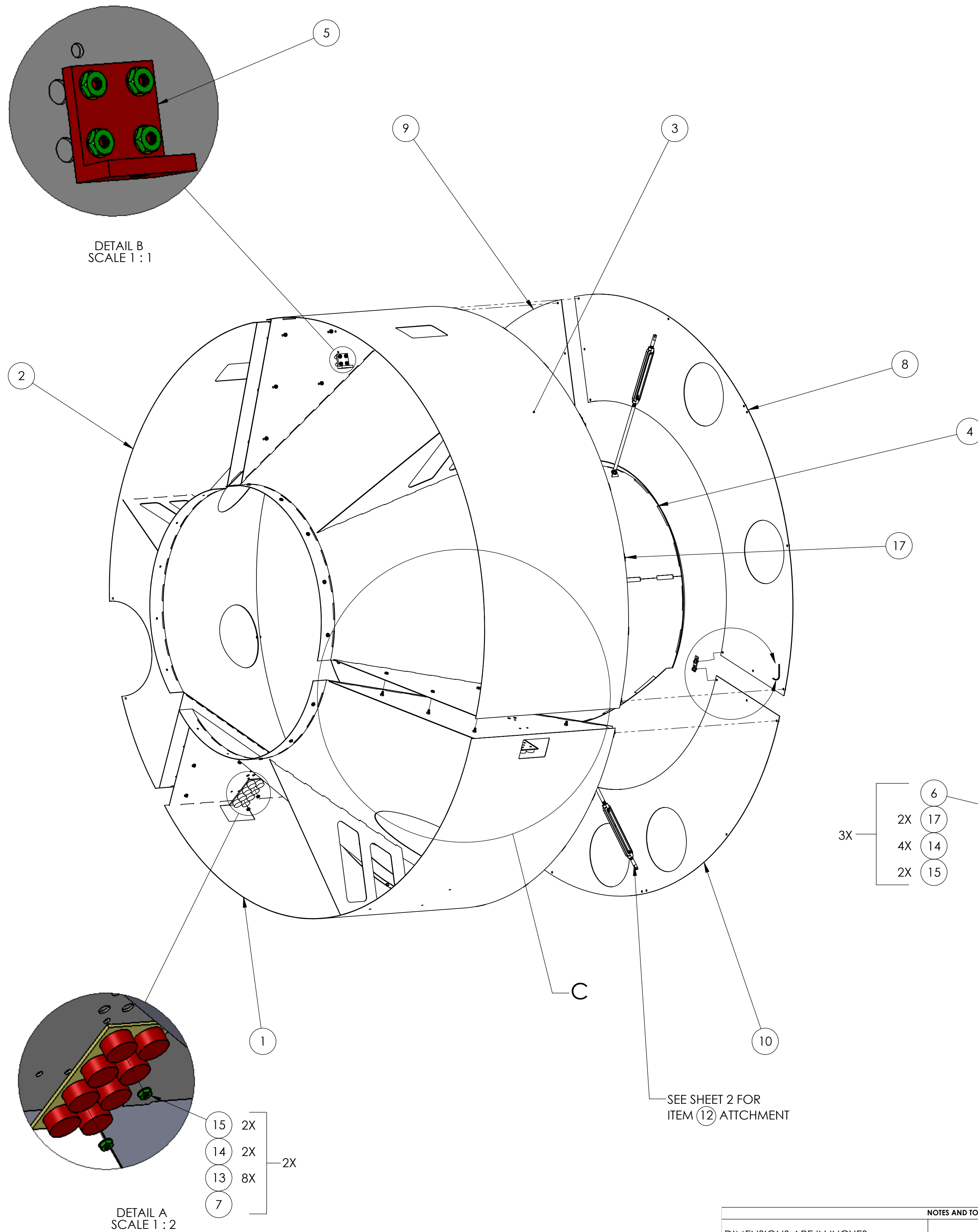


NOTES CONTINUED:

6. APPROXIMATE WEIGHT = X.XXX LB.

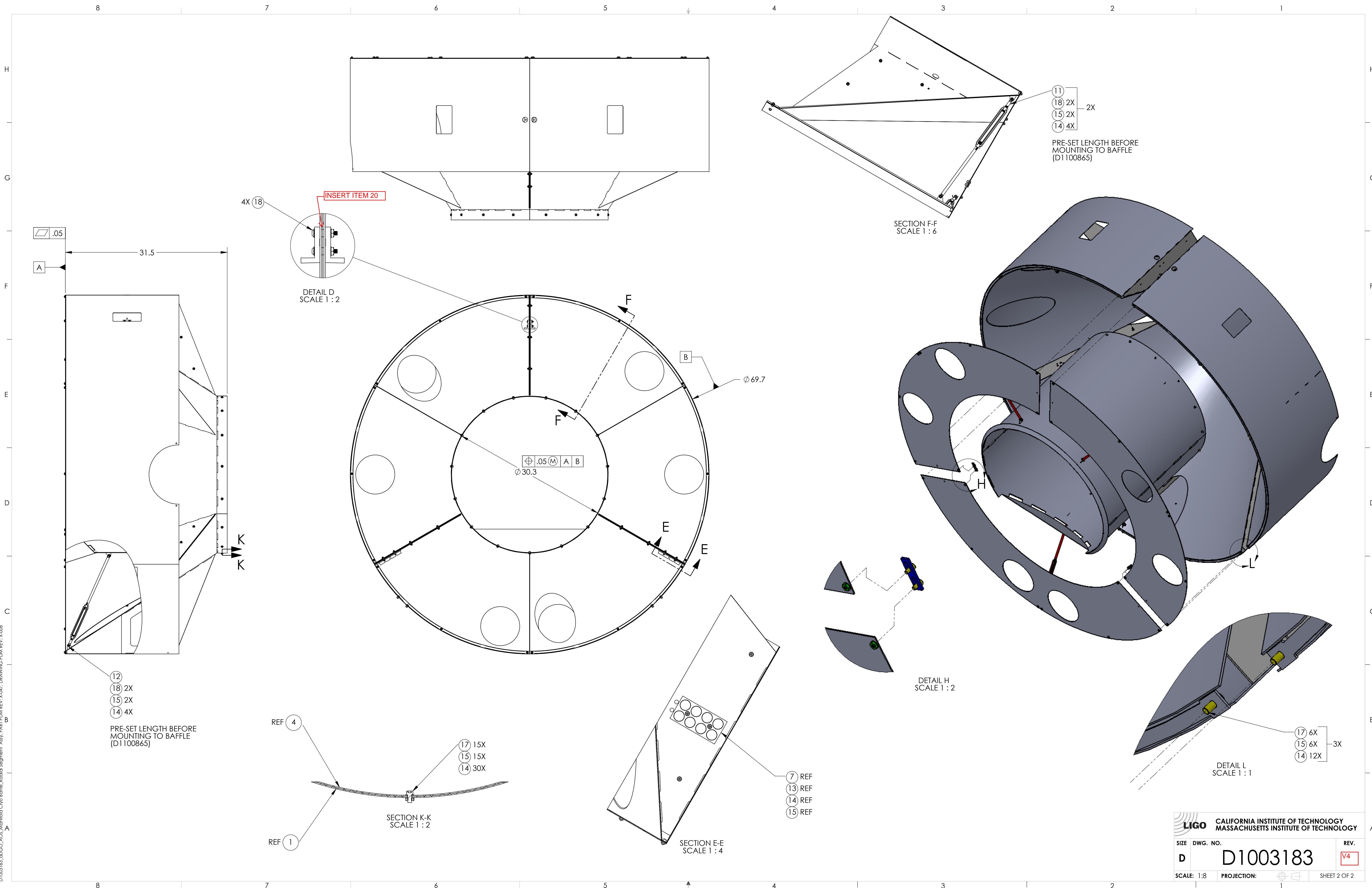
REV.	DATE	DCN #	DRAWING TREE #
v1	8 SEP 2010	-	-
v2	20 OCT 2011	-	-
v3	27 DEC 2012	E1000360	-



ITEM NO.	PART NUMBER	DESCRIPTION	MATERIAL	EXPLODED VIEW/QTY.	SPARE	TOTAL
20	D1300646	BRACKET SHIM	ALUMINUM	1		
19	BU-1016-N	BUTTON HEAD SOCKET CAP SCREW, #10-32 x 1" L	18-8 SSSL	4		0
18	C-1008-N	SCREW SOCKET HEAD CAP_ 10-32 x 1/2" L	18-8 SSSL	6		0
17	C-1006-N	SCREW, SOCKET HEAD CAP_10-32 x 3/8" L	18-8 SSSL	39		0
16	9S316A400	MALE-MALE THREADED ADAPTER 10-32	18-8 SSSL	20		0
15	N-1032-A	HEX NUT, 10-32 THRD SIZE	Ag-PLATED 300 SSSL	89		0
14	WF-10	FLAT WASHER, #10 SCREW SIZE	18-8 SSSL	138		0
13	N35P1000500HT	BUNTING MAGNETIC-NEODYMIUM 1.00D X .50H	NEO 35	16		0
12	D1100865-01	TURN BUCKLE ASSY_LONG LENGTH	N/A	1		0
11	D1100865-02	TURN BUCKLE ASSEMBLY	N/A	2		0
10	D1101502	LOWER FACE PLATE, ETM X	18 GAUGE 304 SSSL	1		0
9	D1003189	RIGHT FACE PLATE, ETM X	18 GAUGE 304 SSSL	1		0
8	D1003203	LEFT FACE PLATE, ETM X	18 GAUGE 304 SSSL	1		0
7	D1100820	LOWER MAGNET PLATE	430F SSSL	2		0
6	D1002641	HALF FACE BRACKET	6061-T6 Al	3		0
5	D1000111	MANIFOLD CRYO MUSIC WIRE ADJ BRKT	304, 316 OR 302 SSSL	2		0
4	D1001348	MANIFOLD-CRYO BAFFLE CYLINDER-SCRAPER ASSEMBLY	N/A	1		0
3	D1003188	MANIFOLD-CRYO BAFFLE SEGMENT SUBASSEMBLY WELDMENT, ETMX H1, LEFT	N/A	1		0
2	D1003186	MANIFOLD-CRYO BAFFLE SEGMENT SUBASSEMBLY WELDMENT, ETMX H1, RIGHT	N/A	1		0
1	D1003184	MANIFOLD-CRYO BAFFLE SEGMENT SUBASSEMBLY WELDMENT, ETMX H1, BOTTOM	N/A	1		0

NOTES AND TOLERANCES: (UNLESS OTHERWISE SPECIFIED)		LIGO CALIFORNIA INSTITUTE OF TECHNOLOGY MASSACHUSETTS INSTITUTE OF TECHNOLOGY		PART NAME	
DIMENSIONS ARE IN INCHES		ADVANCED LIGO		MANIFOLD-CRYOPUMP BAFFLE RADIAL SEGMENT ASSY, ETM X	
TOLERANCES: .XX ± .06 .XXX ± .010		SUB-SYSTEM AOS		DESIGNER TQ. NGUYEN 10 DEC 2010	
ANGULAR ± 0.5°		NEXT ASSY D1003181		DRAFTER TQ. NGUYEN 18 AUG 2010	
MATERIAL N/A		FINISH N/A		CHECKER M. SMITH	
				APPROVAL D. COYNE	
				SCALE: 1:8 PROJECTION:	
				SHEET 1 OF 2	

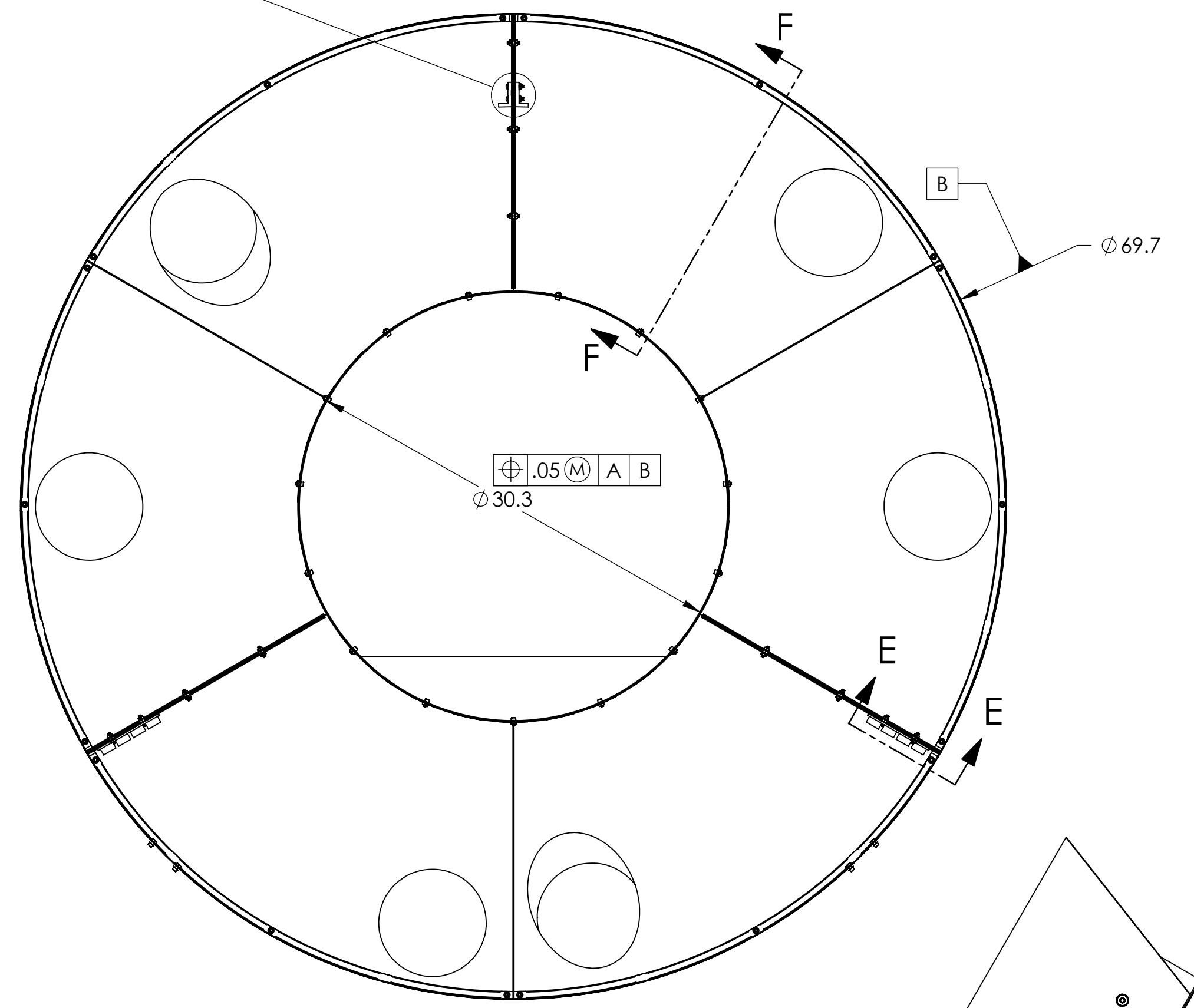
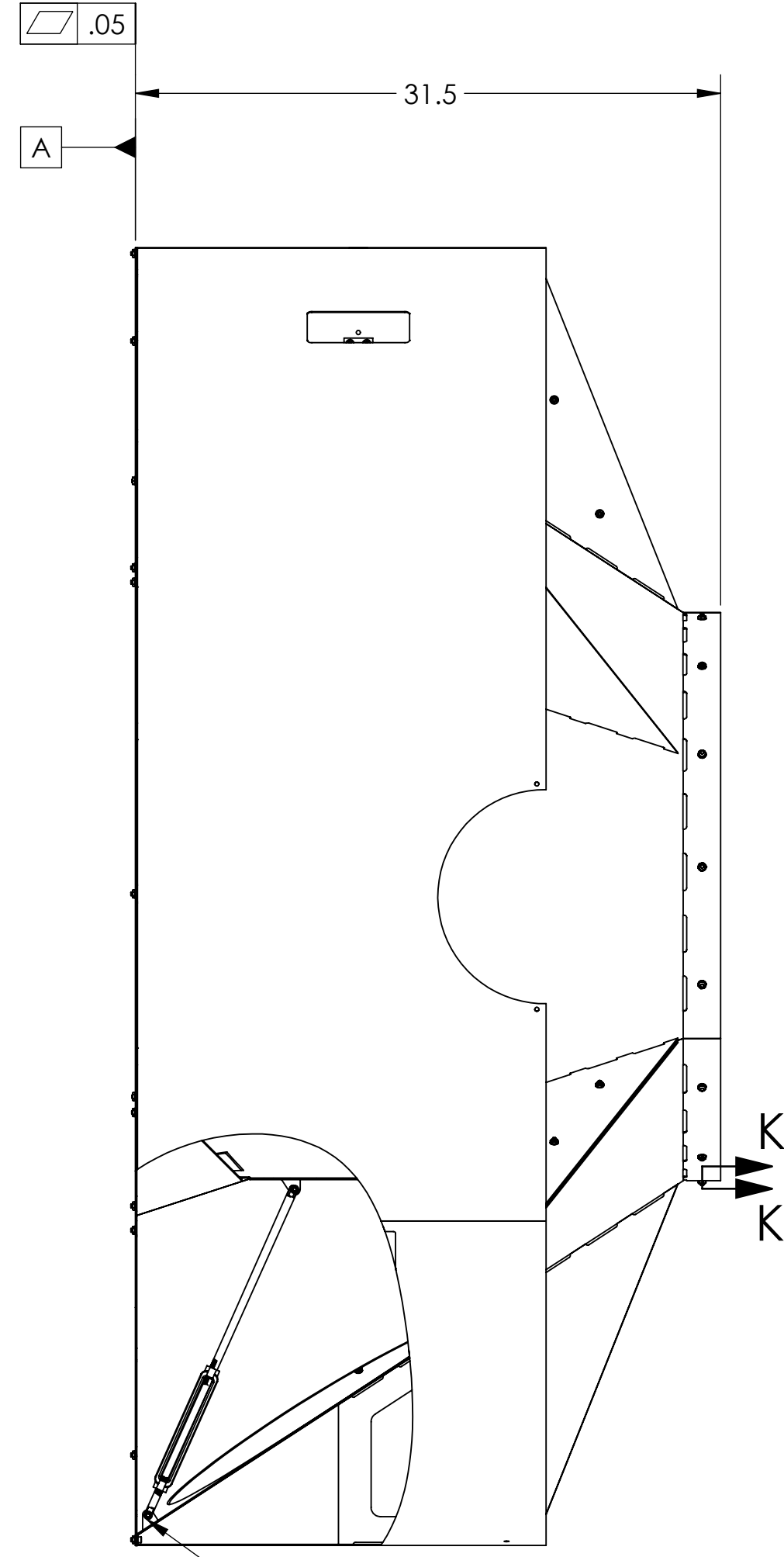
D1003183.dwg\_AOS\_ManifoldCryoBaffleRadialSegment Assy\_PART\_PDM\_REV:4047\_DRAWING\_PDM\_REV:4008



11  
 18 2X  
 15 2X  
 14 4X  
 PRE-SET LENGTH BEFORE MOUNTING TO BAFFLE (D1100865)

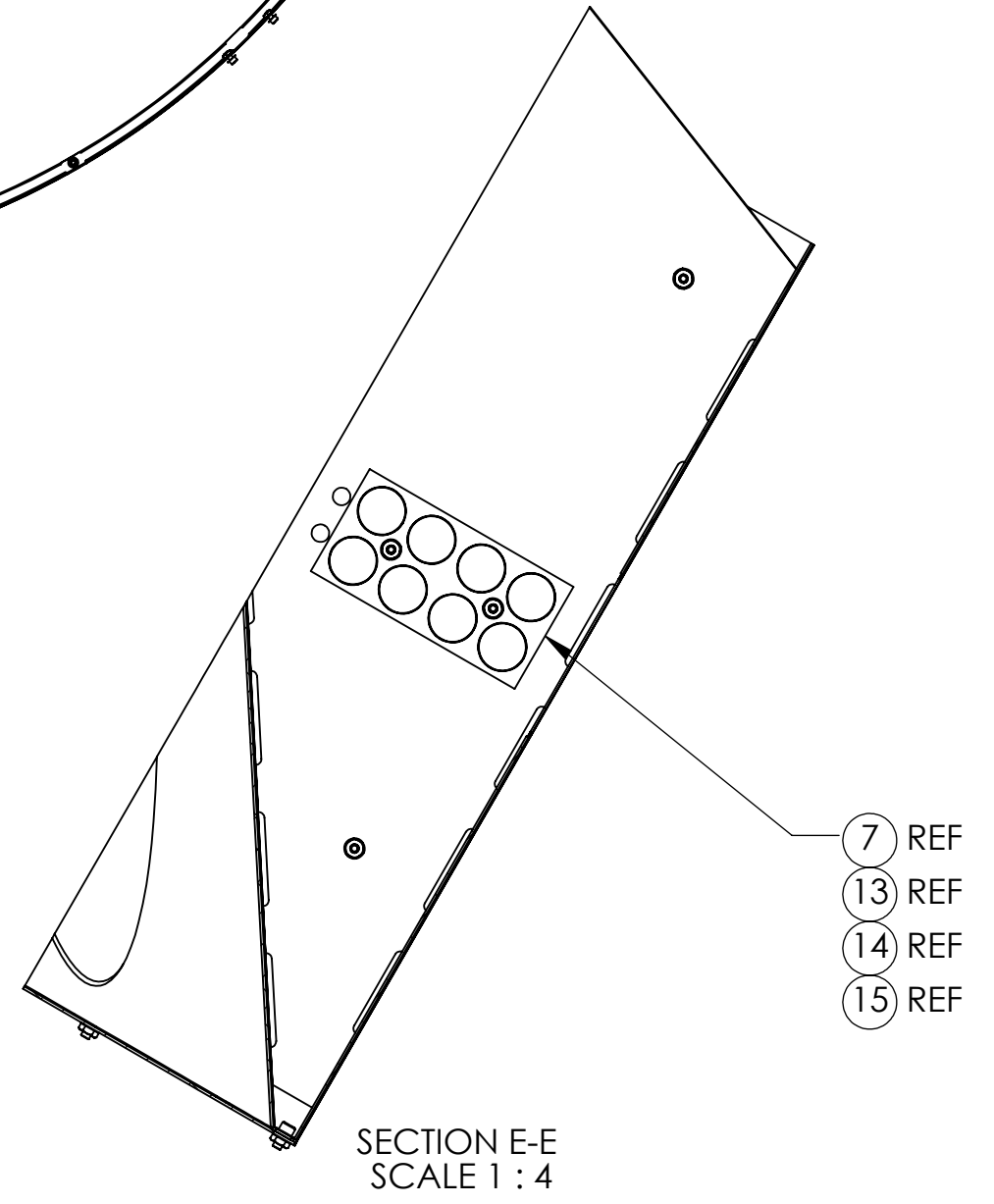
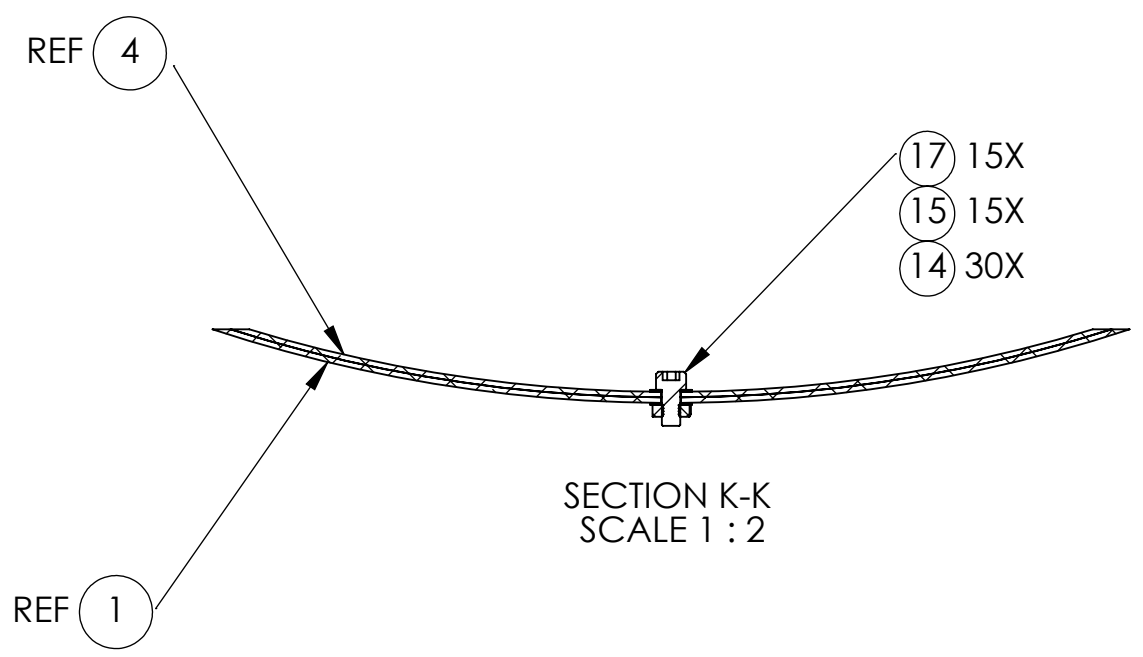
4X 18  
 INSERT ITEM 20  
 DETAIL D  
 SCALE 1 : 2

SECTION F-F  
SCALE 1 : 6



DETAIL H  
SCALE 1 : 2

12  
 18 2X  
 15 2X  
 14 4X  
 PRE-SET LENGTH BEFORE MOUNTING TO BAFFLE (D1100865)



17 6X  
 15 6X  
 14 12X  
 3X  
 DETAIL L  
 SCALE 1 : 1

CALIFORNIA INSTITUTE OF TECHNOLOGY MASSACHUSETTS INSTITUTE OF TECHNOLOGY		REV.
SIZE DWG. NO.	D D1003183	V4
SCALE: 1:8	PROJECTION:	SHEET 2 OF 2

D1003183\_d1003183.dwg; Part PDM Rev: X-047; Drawing PDM Rev: X-008