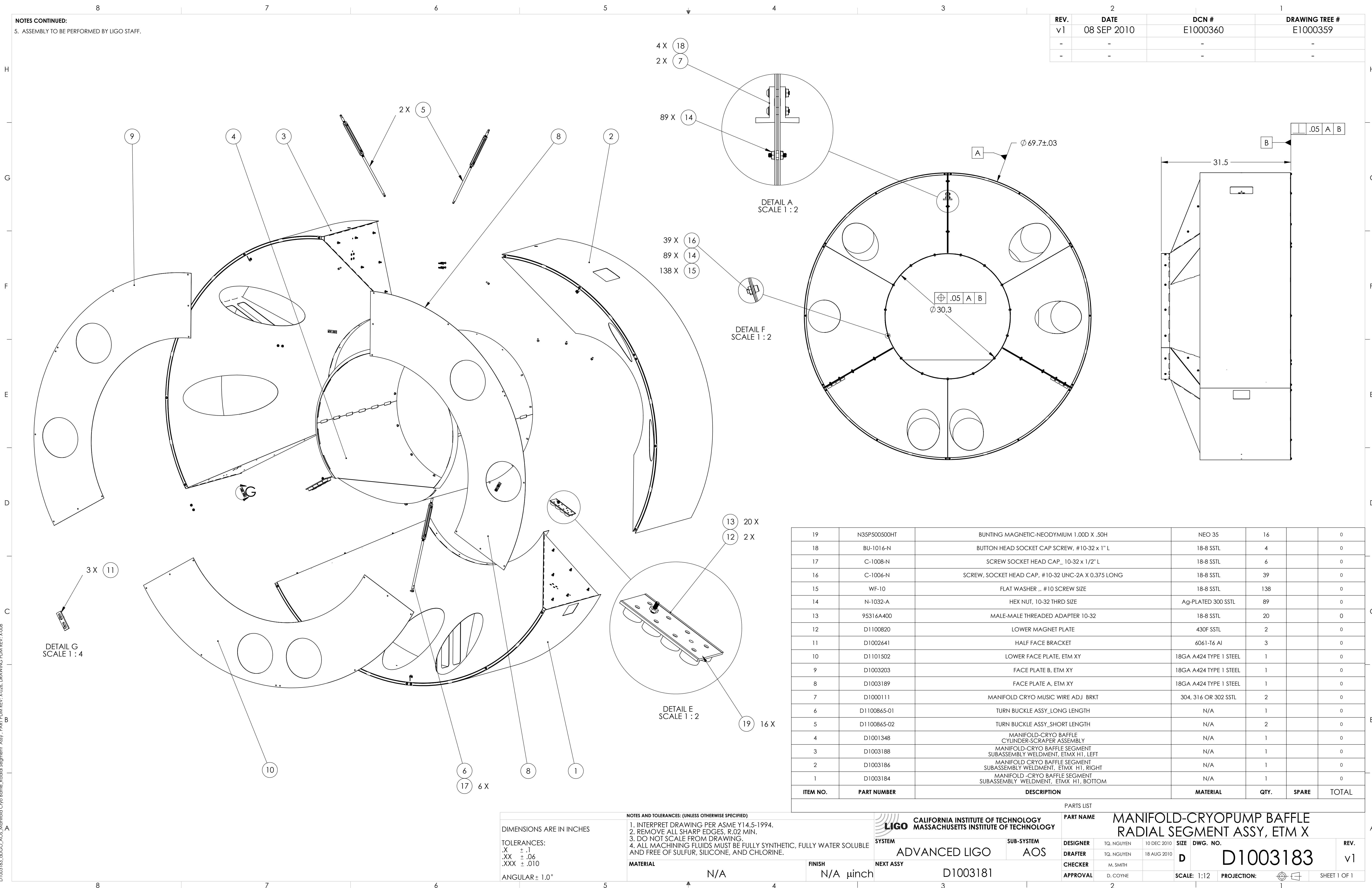


NOTES CONTINUED:  
5. ASSEMBLY TO BE PERFORMED BY LIGO STAFF.

REV.	DATE	DCN #	DRAWING TREE #
v1	08 SEP 2010	E1000360	E1000359
-	-	-	-
-	-	-	-



ITEM NO.	PART NUMBER	DESCRIPTION	MATERIAL	QTY.	SPARE	TOTAL
19	N35P500500HT	BUNTING MAGNETIC-NEODYMIUM 1.00D X .50H	NEO 35	16	0	0
18	BU-1016-N	BUTTON HEAD SOCKET CAP SCREW, #10-32 x 1" L	18-8 SSSL	4	0	0
17	C-1008-N	SCREW SOCKET HEAD CAP, 10-32 x 1/2" L	18-8 SSSL	6	0	0
16	C-1006-N	SCREW, SOCKET HEAD CAP, #10-32 UNC-2A X 0.375 LONG	18-8 SSSL	39	0	0
15	WF-10	FLAT WASHER, #10 SCREW SIZE	18-8 SSSL	138	0	0
14	N-1032-A	HEX NUT, 10-32 THRD SIZE	Ag-PLATED 300 SSSL	89	0	0
13	95316A400	MALE-MALE THREADED ADAPTER 10-32	18-8 SSSL	20	0	0
12	D1100820	LOWER MAGNET PLATE	430F SSSL	2	0	0
11	D1002641	HALF FACE BRACKET	6061-T6 Al	3	0	0
10	D1101502	LOWER FACE PLATE, ETM XY	18GA A424 TYPE 1 STEEL	1	0	0
9	D1003203	FACE PLATE B, ETM XY	18GA A424 TYPE 1 STEEL	1	0	0
8	D1003189	FACE PLATE A, ETM XY	18GA A424 TYPE 1 STEEL	1	0	0
7	D1000111	MANIFOLD CRYO MUSIC WIRE ADJ BRKT	304, 316 OR 302 SSSL	2	0	0
6	D1100865-01	TURN BUCKLE ASSY, LONG LENGTH	N/A	1	0	0
5	D1100865-02	TURN BUCKLE ASSY, SHORT LENGTH	N/A	2	0	0
4	D1001348	MANIFOLD-CRYO BAFFLE CYLINDER-SCRAPER ASSEMBLY	N/A	1	0	0
3	D1003188	MANIFOLD-CRYO BAFFLE SEGMENT SUBASSEMBLY WELDMENT, ETMX H1, LEFT	N/A	1	0	0
2	D1003186	MANIFOLD-CRYO BAFFLE SEGMENT SUBASSEMBLY WELDMENT, ETMX H1, RIGHT	N/A	1	0	0
1	D1003184	MANIFOLD-CRYO BAFFLE SEGMENT SUBASSEMBLY WELDMENT, ETMX H1, BOTTOM	N/A	1	0	0

DIMENSIONS ARE IN INCHES  
TOLERANCES:  
.X ± .1  
.XX ± .06  
.XXX ± .010  
ANGULAR ± 1.0°

NOTES AND TOLERANCES: (UNLESS OTHERWISE SPECIFIED)  
1. INTERPRET DRAWING PER ASME Y14.5-1994.  
2. REMOVE ALL SHARP EDGES, R.02 MIN.  
3. DO NOT SCALE FROM DRAWING.  
4. ALL MACHINING FLUIDS MUST BE FULLY SYNTHETIC, FULLY WATER SOLUBLE AND FREE OF SULFUR, SILICONE, AND CHLORINE.  
MATERIAL N/A  
FINISH N/A μinch  
NEXT ASSY D1003181

**LIGO** CALIFORNIA INSTITUTE OF TECHNOLOGY  
MASSACHUSETTS INSTITUTE OF TECHNOLOGY  
SYSTEM ADVANCED LIGO  
SUB-SYSTEM AOS

PARTS LIST  
**MANIFOLD-CRYOPUMP BAFFLE RADIAL SEGMENT ASSY, ETM X**  
DESIGNER TQ. NGUYEN 10 DEC 2010  
DRAFTER TQ. NGUYEN 18 AUG 2010  
CHECKER M. SMITH  
APPROVAL D. COYNE  
SIZE DWG. NO. D D1003183  
SCALE: 1:12 PROJECTION: SHEET 1 OF 1

D1003183.dwg, Manifold-Cryo Baffle, Radial Segment Assy, PART PDM REV: X026, DRAWING PDM REV: X008