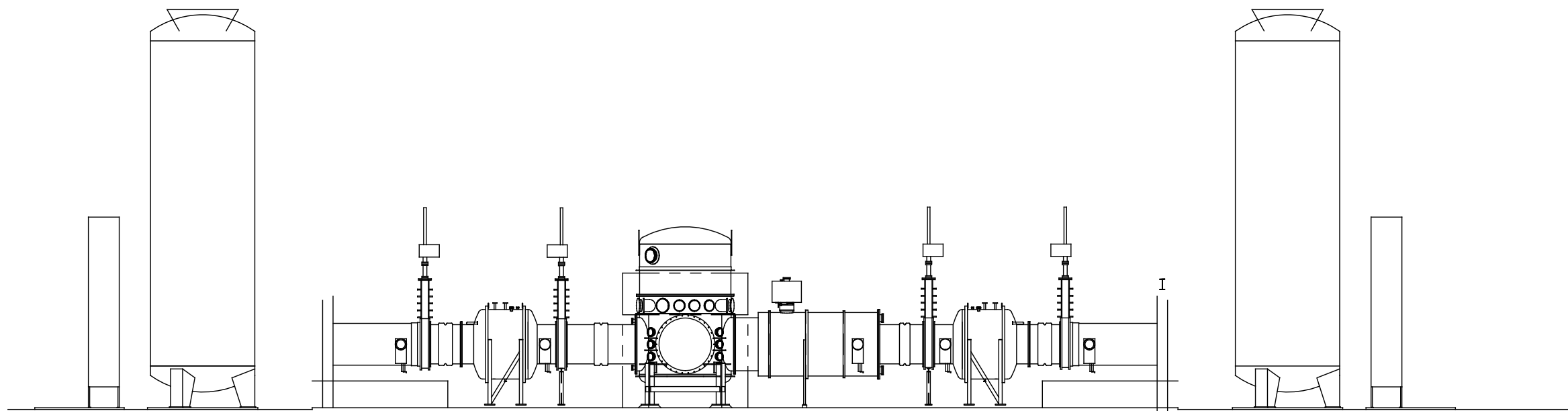
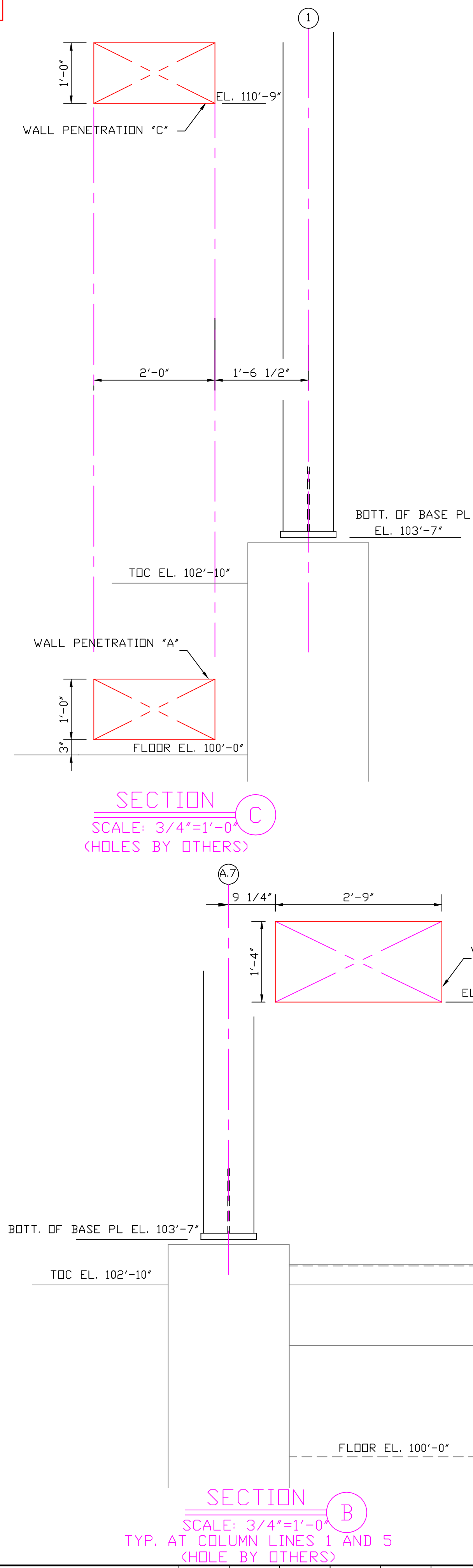
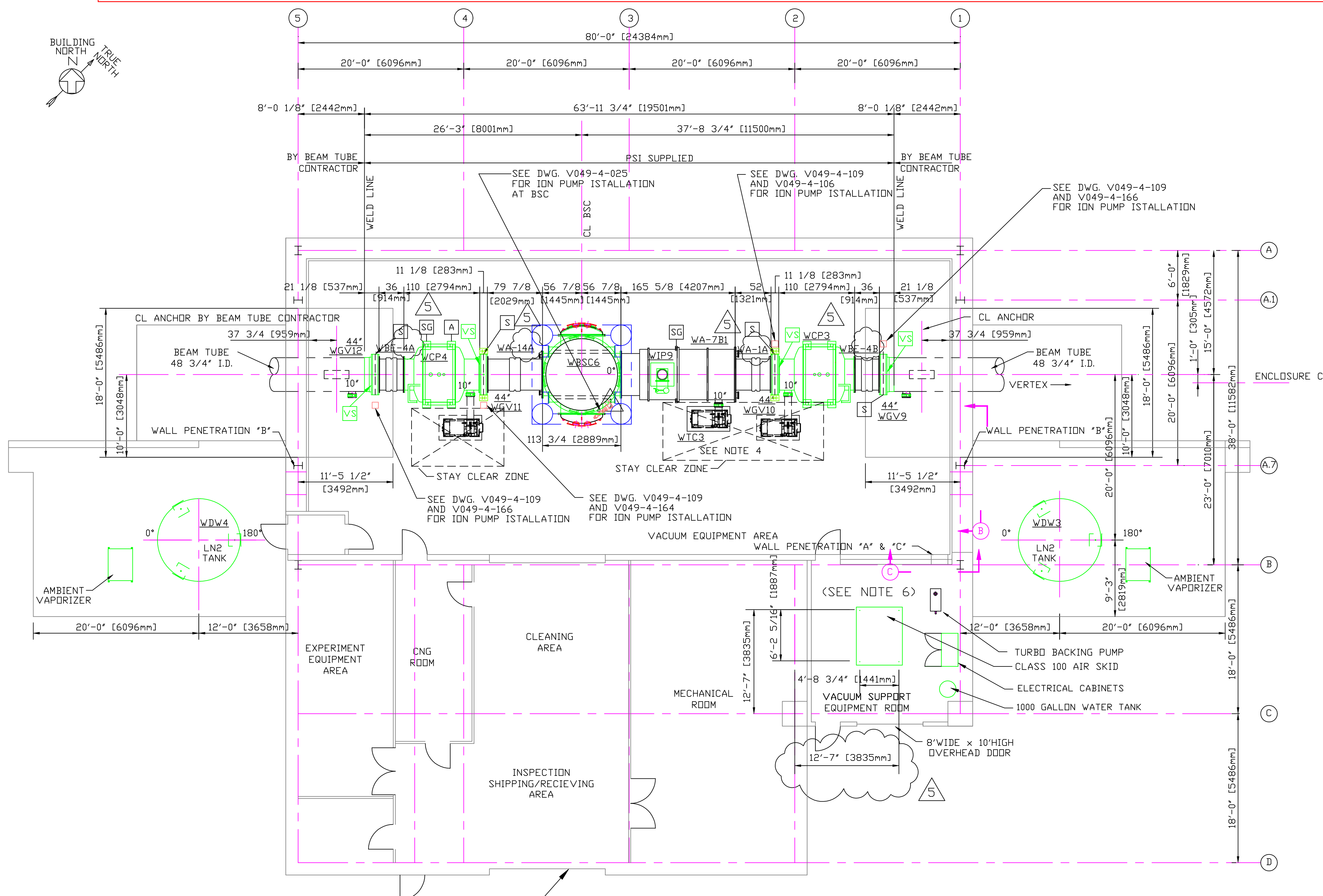


D1003175-v2  
Y-ARM (LEFT) MID-STATION AT LHO,  
SIMPLIFIED EXISTING FLOOR PLAN

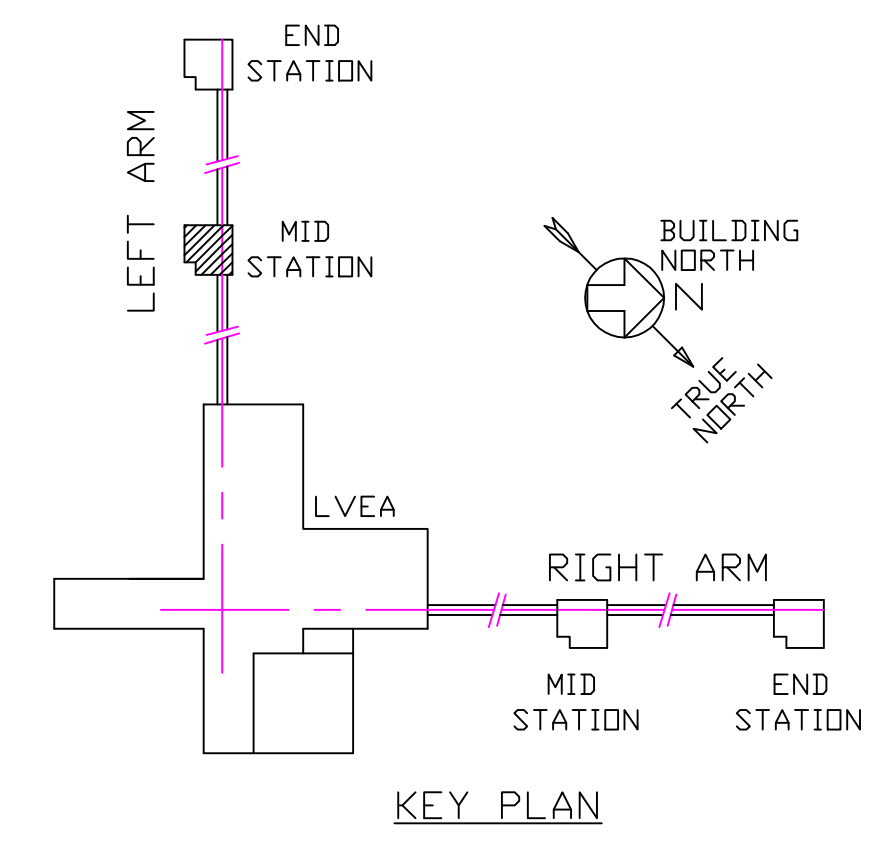
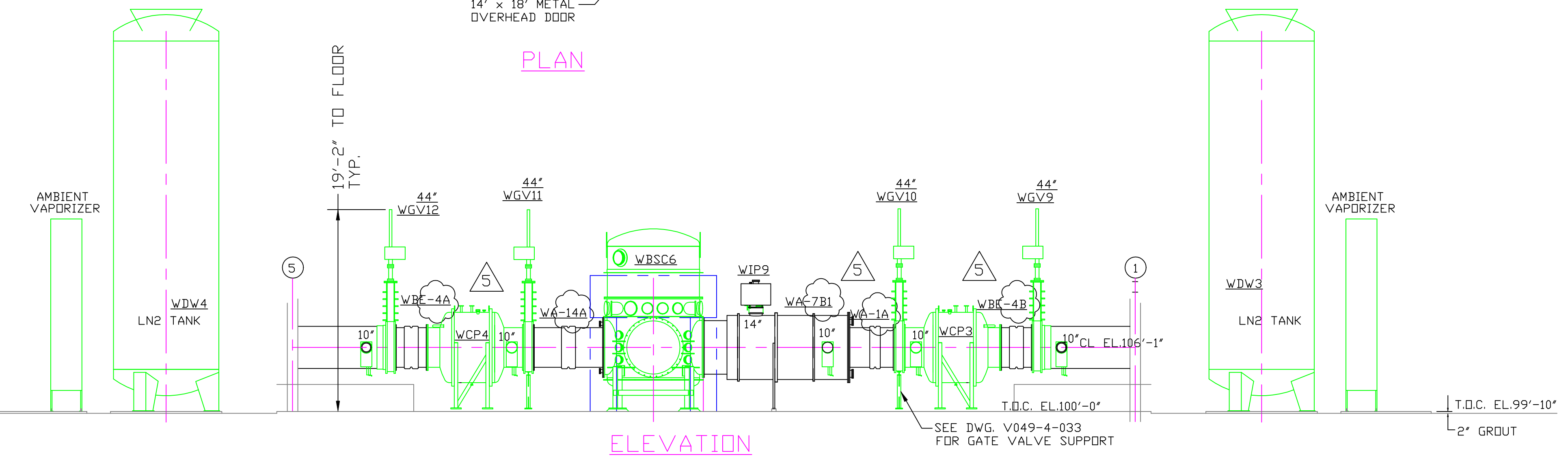


# Y-END (LEFT) MID-STATION, AT LHO, COMPLEAT EXISTING FLOOR PLAN, D1003175



- NOTES:**
- ALL GATE VALVES ARE SUPPLIED BY PSI.  
NOTE: SPECIAL BOLTS AND WASHERS ARE REQUIRED TO CONNECT SPOOL FLANGES TO 44" AND 48" GATE VALVES. USE PSI P/N 203567 FOR BOLTS AND PSI P/N 203568 FOR WASHERS. SEE BUILDING BDM V049100WA FOR MATERIALS.  
FOR ORIENTATION OF LARGE GATE VALVES SEE SIDE OF VALVE NOTED BY SYMBOL 'VS' IN PLAN BELOW. ALL 6", 10" & 14" GATE VALVES ARE TO HAVE SEAL SIDE MOUNTED TOWARD VESSEL.
  - SEE SPEC. V049-2-021 FOR INSTALLATION/ COMMISSIONING INFORMATION.
  - FOR TUBING/ PIPE SUPPORT REQUIREMENTS, SEE SPEC. V049-2-021, SECTION 10.
  - SEE DWG. D V049-4-011 FOR TURBO PUMP CART INSTALLATION.
  - LN2 TANK ANCHOR BOLTS BY OTHERS.
  - FOR ANCHOR BOLTS AND VIBRATION ISOLATION PAD REQUIREMENTS FOR VACUUM SUPPORT ROOM EQUIPMENT AND ELECTRICAL CABINETS, SEE DWG. V049-5-028, DETAIL 2.

- SUPPORTS LEGEND**
- A 3 WAY ANCHOR
  - SG SUPPORT/GUIDE (AXIALLY FLEXIBLE)
  - S VALVE SUPPORT
  - GATE VALVE ION PUMP LOCATION
  - VS VALVE SEAL SIDE



PROPRIETARY AND CONFIDENTIAL  
THIS DOCUMENT CONTAINS PROPRIETARY INFORMATION BELONGING TO PROCESS SYSTEMS INTERNATIONAL, INC. OR ITS AFFILIATED COMPANIES AND SHALL BE USED ONLY FOR THE PURPOSE FOR WHICH IT WAS SUPPLIED. IT SHALL NOT BE COPIED, REPRODUCED OR OTHERWISE USED, NOR SHALL SUCH INFORMATION BE FURNISHED IN WHOLE OR IN PART TO OTHERS EXCEPT IN ACCORDANCE WITH THE TERMS OF ANY AGREEMENT UNDER WHICH IT WAS SUPPLIED OR WITH THE PRIOR WRITTEN CONSENT OF PROCESS SYSTEMS INTERNATIONAL, INC. AND SHALL BE RETURNED UPON REQUEST.

DWG. NO.	DESCRIPTION	DWG. NO.	DESCRIPTION
V049-0-100	DRAWING TREE/BDM STRUCTURE	V049-2-021	SPEC FOR INSTALLATION/ COMMISSIONING
V0490-0-001	P @ ID LIGO VACUUM EQUIPMENT	WA-A-201	PARSONS ARCHITECTURAL MID STATIONS FLOOR PLAN
1101103	LIGO VACUUM EQUIPMENT MID STATIONS		

UNLESS OTHERWISE SPECIFIED DIMENSIONS ARE IN INCHES  
TOLERANCES:  
FRACTIONAL ±  
ANGULAR/ARCH ± BEND ±  
TWO PLACE DECIMAL ±  
THREE PLACE DECIMAL ±  
FINISHED SURFACE RMS  
BREAK CORNERS IN  
REMOVE ALL BURRS  
DO NOT SCALE THIS DRAWING  
USED ON:  
NEXT ASS'Y:

REV	DESCRIPTION	ISSUE DESCRIPTION	CHKD	DRWN	DATE	DETH
5	AS-BUILT		DMW	RDC	REC	DA
4	REISSUED FOR CONSTRUCTION AS NOTED		DMW	RDC	REC	SPIDER
3	REISSUED FOR CONSTRUCTION AS NOTED		DMW	RDC	REC	PV
2	ISSUED FOR CONSTRUCTION		DMW	RDC	REC	PV
1	ISSUED FOR FDR UPDATE & BID		DMW	RDC	REC	PV
0	ISSUED FOR FDR		DMW	RDC	REC	PV

**PROCESS SYSTEMS INTERNATIONAL, INC.**  
20 WALKUP DR. WESTBOROUGH, MASSACHUSETTS 01581 USA

**EQUIPMENT ARRANGEMENT  
LEFT MID STATION  
WASHINGTON  
LIGO VACUUM EQUIPMENT**

CAD FILE: V0495006  
SIZE: D  
DWG. NO.: V049-5-006  
REV: 5

SCALE: 1/8"=1'-0"  
SHEET: 1 OF 1