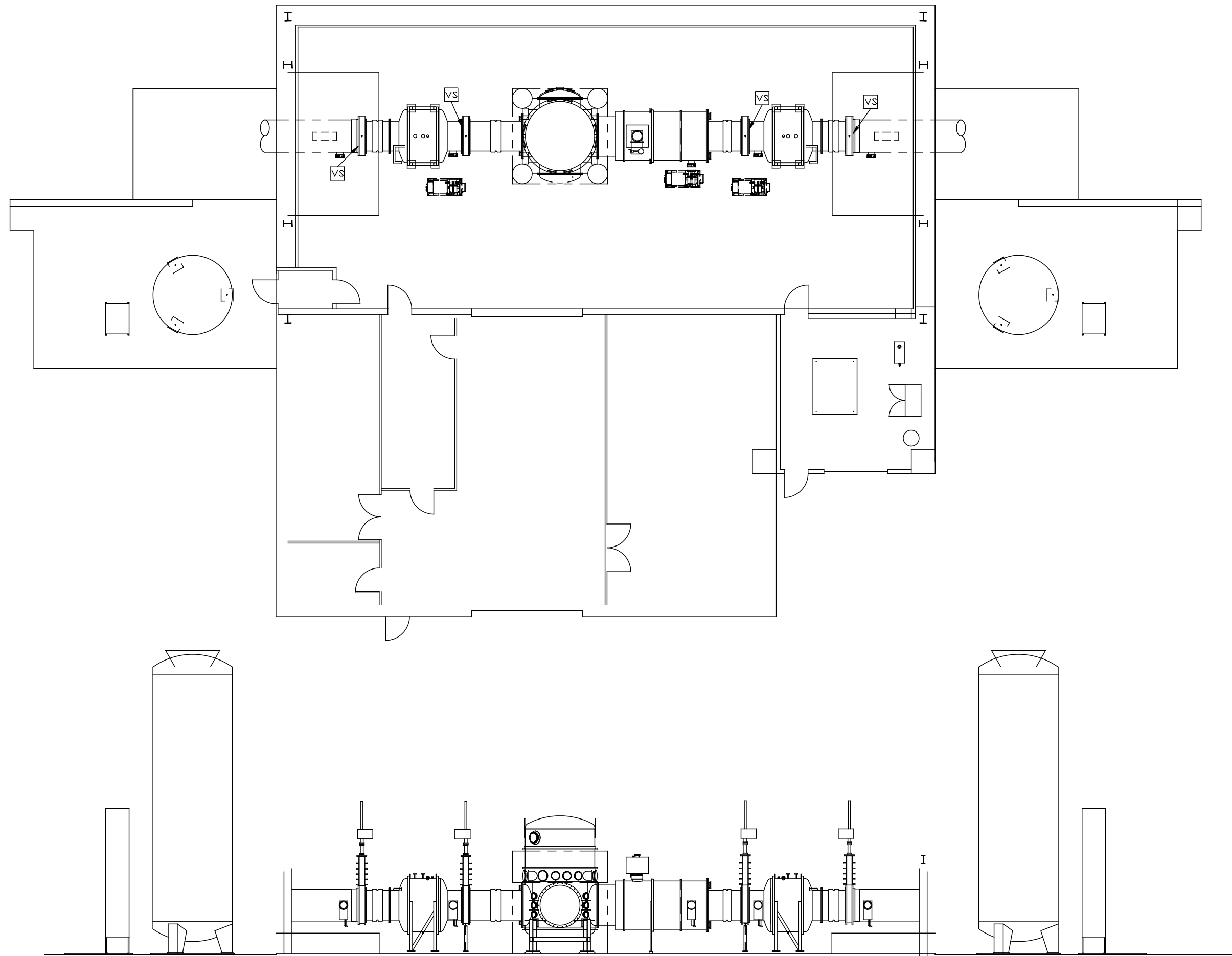
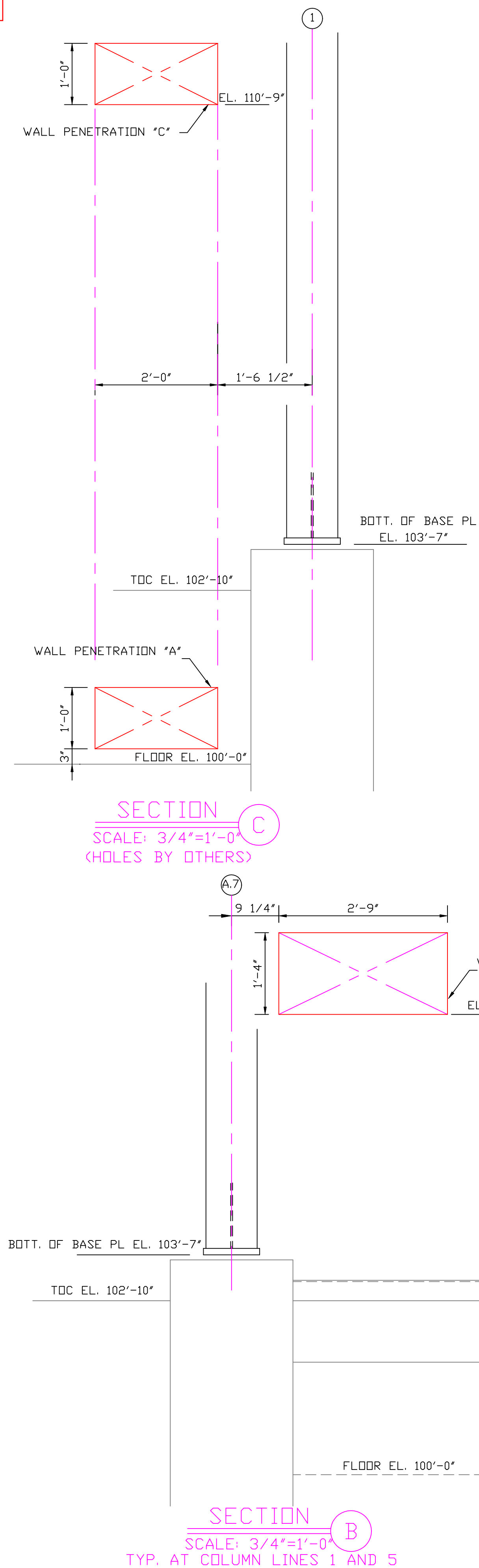
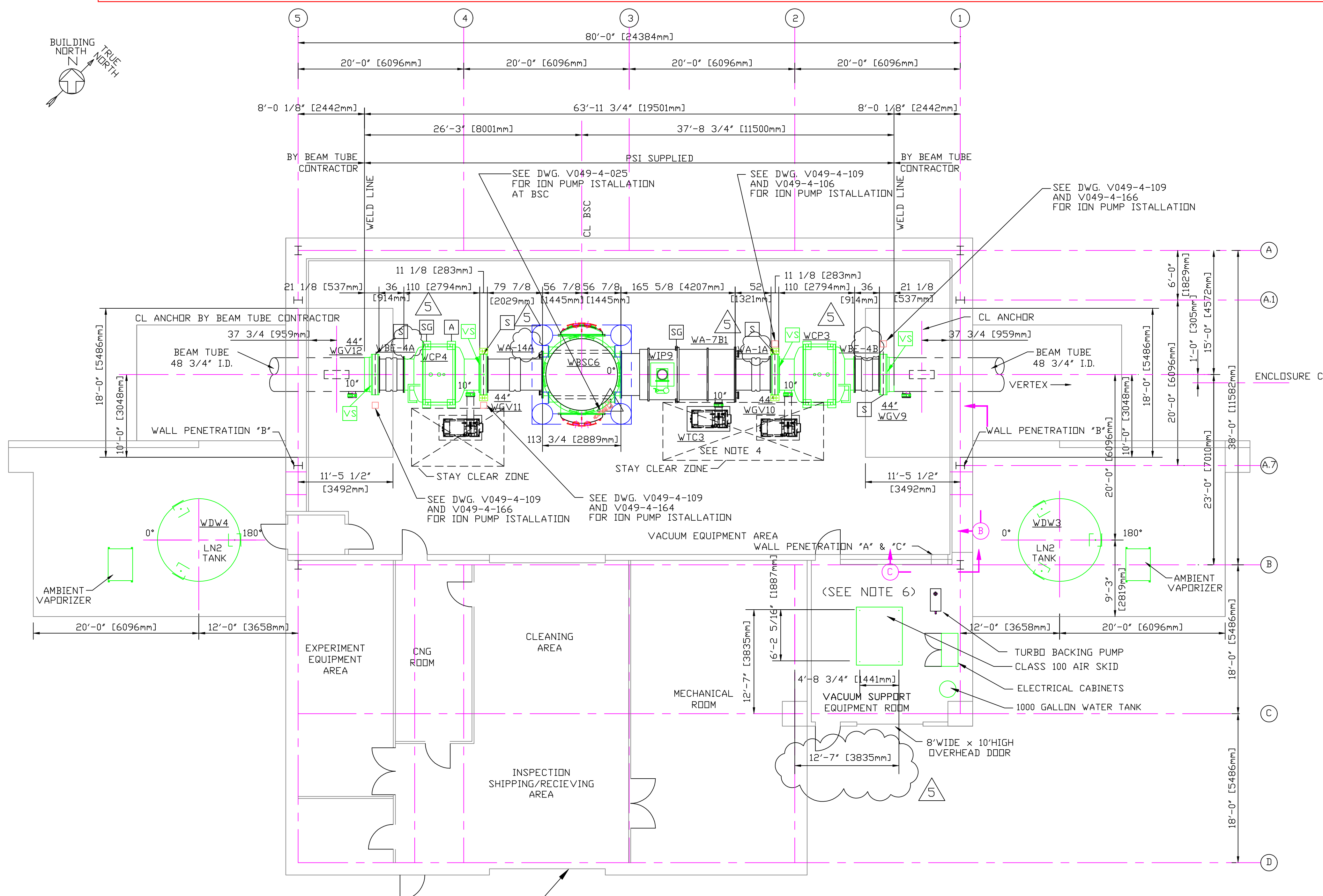


Y-END (LEFT) MID-STATION AT LHO, SIMPLIFIED EXISTING FLOOR PLAN, D1003175

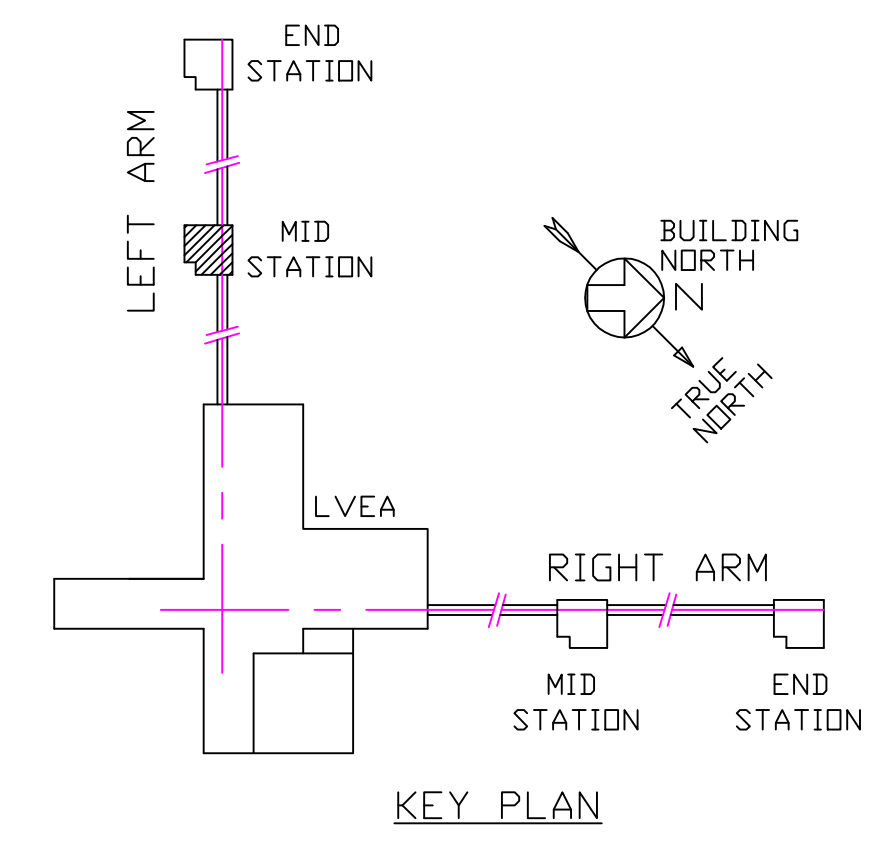
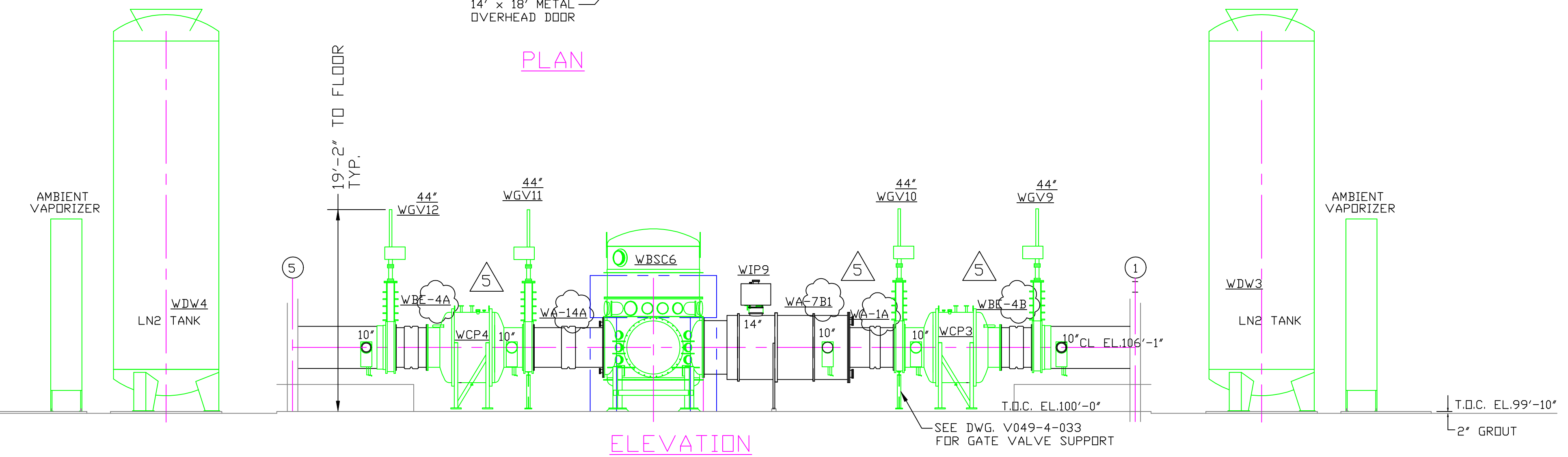


# Y-END (LEFT) MID-STATION, AT LHO, COMPLEAT EXISTING FLOOR PLAN, D1003175



- NOTES:**
- ALL GATE VALVES ARE SUPPLIED BY PSI.  
NOTE: SPECIAL BOLTS AND WASHERS ARE REQUIRED TO CONNECT SPOOL FLANGES TO 44" AND 48" GATE VALVES. USE PSI P/N 203567 FOR BOLTS AND PSI P/N 203568 FOR WASHERS. SEE BUILDING BDM V049100WA FOR MATERIALS.  
FOR ORIENTATION OF LARGE GATE VALVES SEE SIDE OF VALVE NOTED BY SYMBOL 'VS' IN PLAN BELOW. ALL 6", 10" & 14" GATE VALVES ARE TO HAVE SEAL SIDE MOUNTED TOWARD VESSEL.
  - SEE SPEC. V049-2-021 FOR INSTALLATION/ COMMISSIONING INFORMATION.
  - FOR TUBING/ PIPE SUPPORT REQUIREMENTS, SEE SPEC. V049-2-021, SECTION 10.
  - SEE DWG. D V049-4-011 FOR TURBO PUMP CART INSTALLATION.
  - LN2 TANK ANCHOR BOLTS BY OTHERS.
  - FOR ANCHOR BOLTS AND VIBRATION ISOLATION PAD REQUIREMENTS FOR VACUUM SUPPORT ROOM EQUIPMENT AND ELECTRICAL CABINETS, SEE DWG. V049-5-028, DETAIL 2.

- SUPPORTS LEGEND**
- A 3 WAY ANCHOR
  - SG SUPPORT/GUIDE (AXIALLY FLEXIBLE)
  - S VALVE SUPPORT
  - [ ] GATE VALVE ION PUMP LOCATION
  - VS VALVE SEAL SIDE



<p><b>PROPRIETARY AND CONFIDENTIAL</b></p> <p>THIS DOCUMENT CONTAINS PROPRIETARY INFORMATION BELONGING TO PROCESS SYSTEMS INTERNATIONAL, INC. OR ITS AFFILIATED COMPANIES AND SHALL BE USED ONLY FOR THE PURPOSE FOR WHICH IT WAS SUPPLIED. IT SHALL NOT BE COPIED, REPRODUCED OR OTHERWISE USED, NOR SHALL SUCH INFORMATION BE FURNISHED IN WHOLE OR IN PART TO OTHERS EXCEPT IN ACCORDANCE WITH THE TERMS OF ANY AGREEMENT UNDER WHICH IT WAS SUPPLIED OR WITH THE PRIOR WRITTEN CONSENT OF PROCESS SYSTEMS INTERNATIONAL, INC. AND SHALL BE RETURNED UPON REQUEST.</p>		<p>V049-0-100 DRAWING TREE/BDM STRUCTURE</p> <p>V049-2-021 SPEC FOR INSTALLATION/ COMMISSIONING</p> <p>V0490-0-001 P @ ID LIGO VACUUM EQUIPMENT</p> <p>WA-A-201 PARSONS ARCHITECTURAL MID STATIONS FLOOR PLAN</p> <p>1101103 LIGO VACUUM EQUIPMENT MID STATIONS</p>		<p>UNLESS OTHERWISE SPECIFIED DIMENSIONS ARE IN INCHES</p> <p>TOLERANCES:</p> <p>FRACTIONAL ±</p> <p>ANGULAR/ARCH ± BEND ±</p> <p>TWO PLACE DECIMAL ±</p> <p>THREE PLACE DECIMAL ±</p> <p>FINISHED SURFACE RMS</p> <p>BREAK CORNERS IN REMOVE ALL BURRS</p> <p>DO NOT SCALE THIS DRAWING</p> <p>USED ON:</p> <p>NEXT ASS'Y:</p>		<p>5 AS-BUILT</p> <p>4 REISSUED FOR CONSTRUCTION AS NOTED</p> <p>3 REISSUED FOR CONSTRUCTION AS NOTED</p> <p>2 ISSUED FOR CONSTRUCTION</p> <p>1 ISSUED FOR FDR UPDATE &amp; BID</p> <p>0 ISSUED FOR FDR</p>		<p>GW 5/22/98 0615</p> <p>DMW RDC REC DA 6/26/97 0507</p> <p>DMW RDC REC SPIDER 6/9/97 0497</p> <p>DMW RDC REC PV 4/14/97 0465</p> <p>DMW RDC REC PV 2/4/97 0356</p> <p>DMW RDC REC PV 5/6/96 0147</p>		<p><b>PROCESS SYSTEMS INTERNATIONAL, INC.</b></p> <p>20 WALKUP DR. WESTBOROUGH, MASSACHUSETTS 01581 USA</p> <p>EQUIPMENT ARRANGEMENT</p> <p>LEFT MID STATION</p> <p>WASHINGTON</p> <p>LIGO VACUUM EQUIPMENT</p> <p>CAD FILE V0495006</p> <p>SIZE DWG. NO. V049-5-006</p> <p>SCALE 1/8"=1'-0"</p>		<p>REV 5</p> <p>SHEET 1 OF 1</p>	
---	--	---	--	---	--	---	--	--	--	--	--	----------------------------------	--