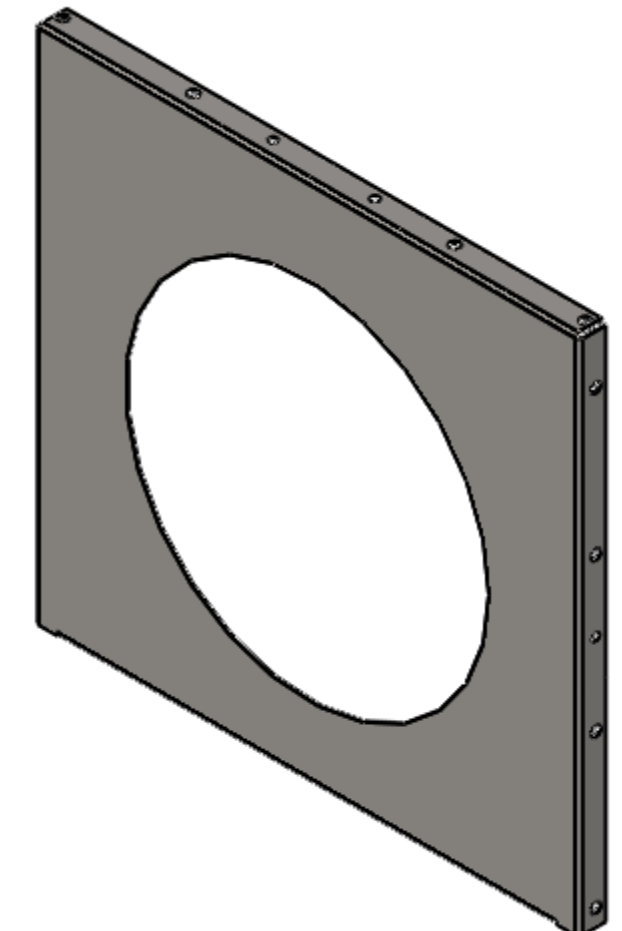
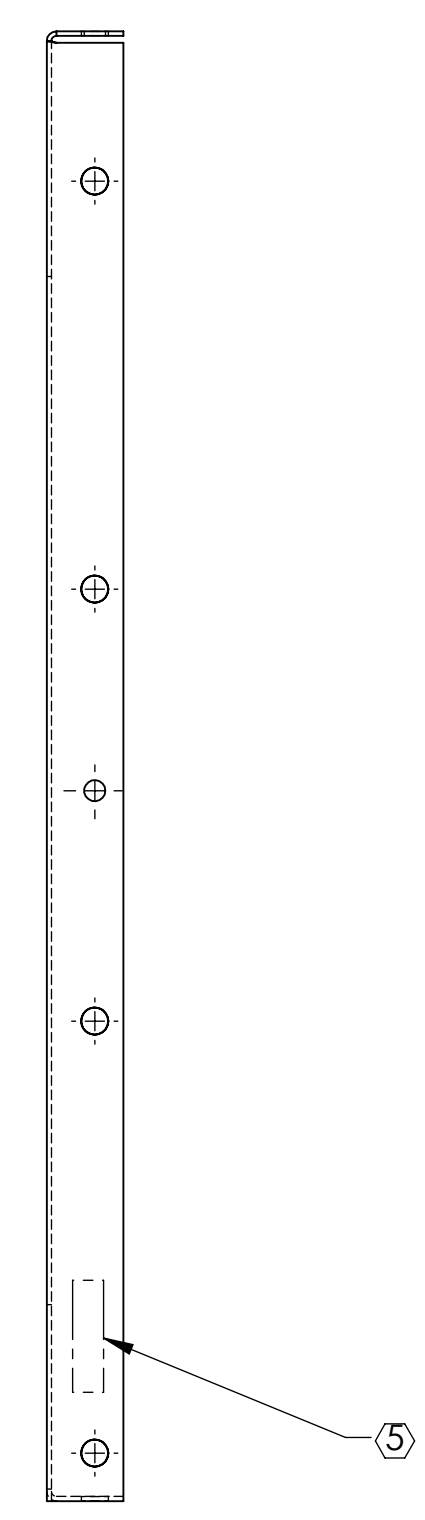
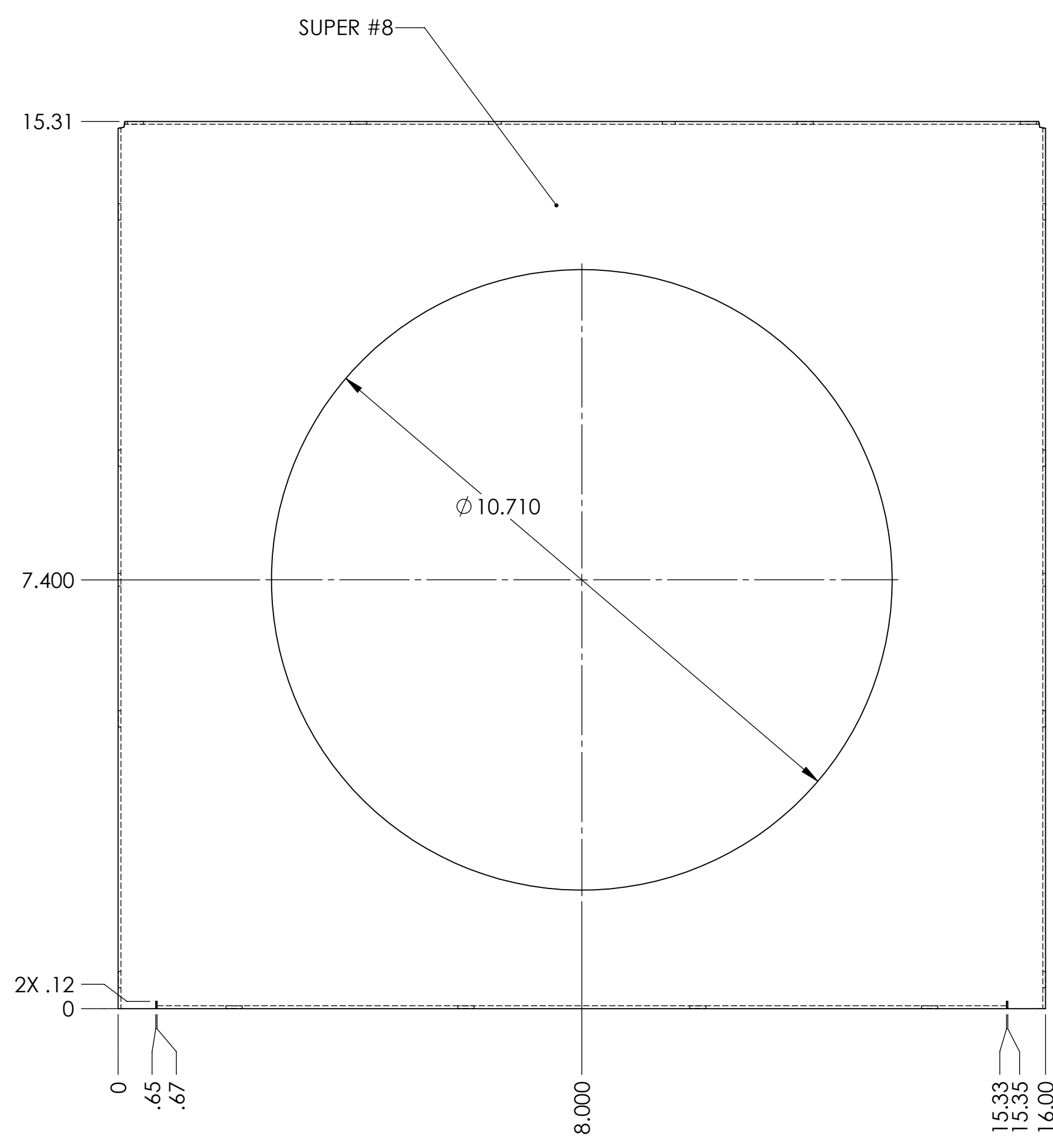
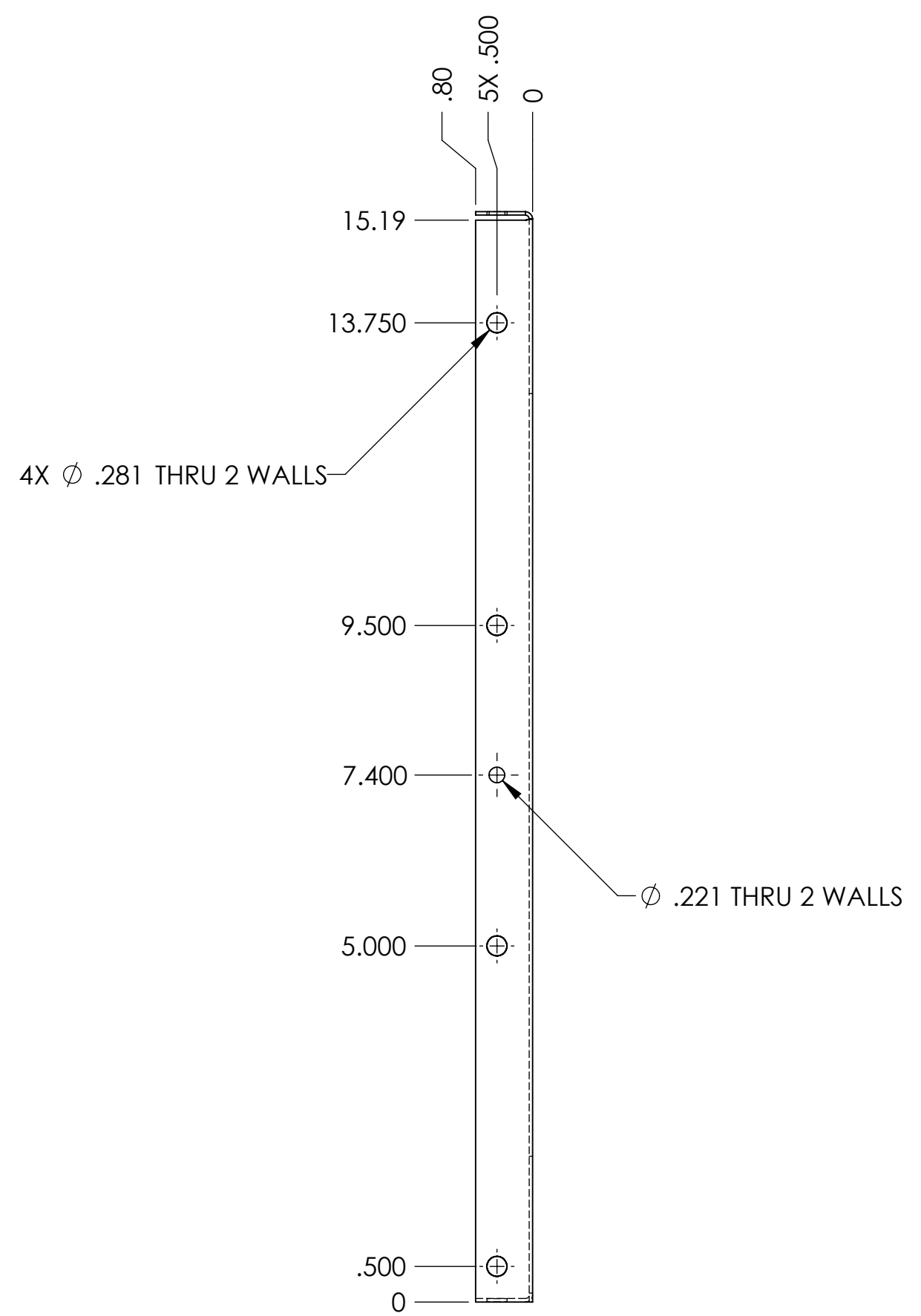
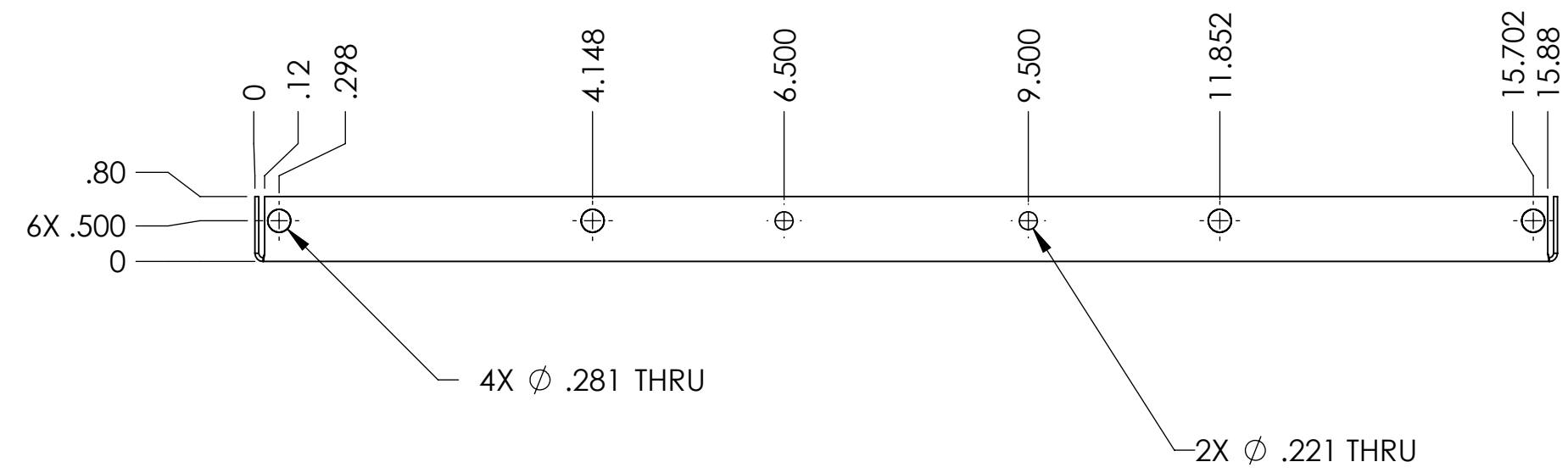
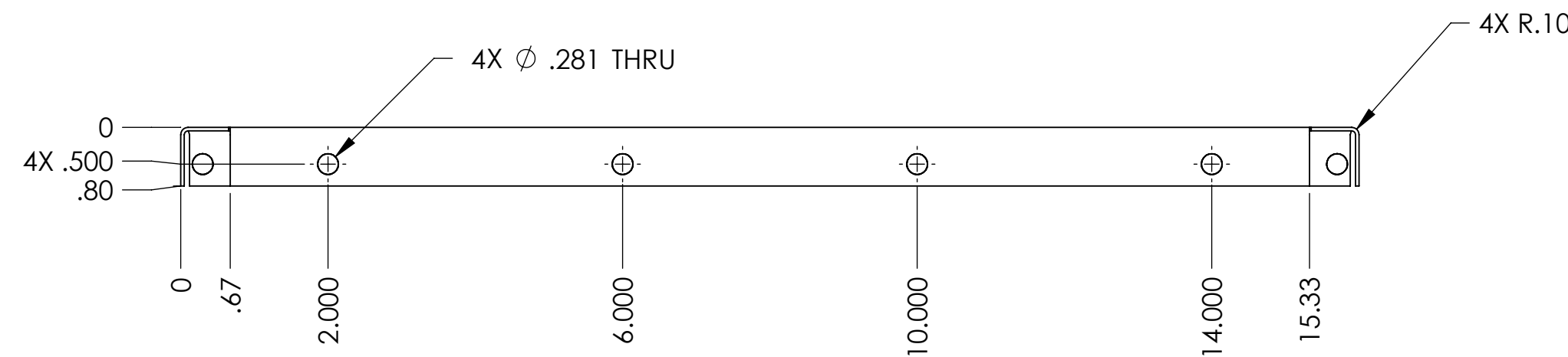


- NOTES CONTINUED:
- 5. SCRIBE, ENGRAVE (A VIBRATORY TOOL MAY BE USED), LASER MARK (NO INKS OR DYES) DRAWING PART NUMBER, REVISION (AND VARIANT OR TYPE IF APPLICABLE) ON NOTED SURFACE OF PART FOLLOWED ON THE NEXT LINE WITH A THREE DIGITAL SERIAL NUMBER. SERIAL NUMBERS START AT 001 FOR THE FIRST ARTICLE AND PROCEED CONSECUTIVELY. USE MINIMUM .012" HIGH CHARACTERS, UNLESS THE SIZE OF THE PART DICTATES SMALLER CHARACTERS.
EXAMPLE: DXXXXXXVY, TYPE-XX, S/N XXX
DO NOT APPLY MARK ON SUPER # 8 SIDE.
 - 6. APPROXIMATE WEIGHT = 5.020 LB.
 - 7. ALL PARTS SHALL BE MANUFACTURED IN ACCORDANCE WITH LIGO SPECIFICATION E0900364.
 - 8. ALL MATERIAL IS TO BE VIRGIN MATERIAL (i.e. NO WELD REPAIRS, PLUGS OR RECYCLED MATERIAL). NO REPAIRS SHALL BE MADE UNLESS APPROVED IN ADVANCE, AND IN WRITING, BY LIGO LABORATORY. REFER TO LIGO-E0900364.
 - 9. SURFACE FINISH TO BE AS-PROCESSED FROM MILL/SUPPLIER, FREE FROM SCRATCHES OR GOUGES.
 - 10. PART TO BE OXIDIZED PER LIGO SPECIFICATION E1100842.

REV.	DATE	DCN #	DRAWING TREE #
v1	4 APR 2011	E1100313	



GENERAL VIEW FOR REFERENCE ONLY NO SCALE



NOTES AND TOLERANCES: (UNLESS OTHERWISE SPECIFIED)				LIGO CALIFORNIA INSTITUTE OF TECHNOLOGY MASSACHUSETTS INSTITUTE OF TECHNOLOGY		PART NAME	
DIMENSIONS ARE IN INCHES TOLERANCES: .XX ± .03 .XXX ± .010 ANGULAR ± 1.0°				1. INTERPRET DRAWING PER ASME Y14.5-1994. 2. REMOVE ALL SHARP EDGES, .005-.015, FOR MACHINED PARTS. ROUND ALL EDGES APPROXIMATELY R.02 FOR SHEET METAL PARTS. 3. DO NOT SCALE FROM DRAWING. 4. ALL MACHINING FLUIDS MUST BE FULLY SYNTHETIC, FULLY WATER SOLUBLE AND FREE OF SULFUR, SILICONE, AND CHLORINE.		ALIGO SR3 HR BAFFLE PLATE	
MATERIAL 18 GAUGE 304 SSTL		FINISH SUPER #8		SYSTEM ADVANCED LIGO		SUB-SYSTEM AOS	
NEXT ASSY D1003205				DESIGNER C. WILKERSON		DATE 17 DEC 2010	
APPROVAL M. SMITH				CHECKER L. AUSTIN		SIZE D	
SCALE 1:2				PROJECTION 		DWG. NO. D1003173	
REVISION v1				SHEET 1 OF 1			

D1003173 ALIGO SR3 HR BAFFLE PLATE, PART PDM, REV: X.035, DRAWING PDM, REV: X.024