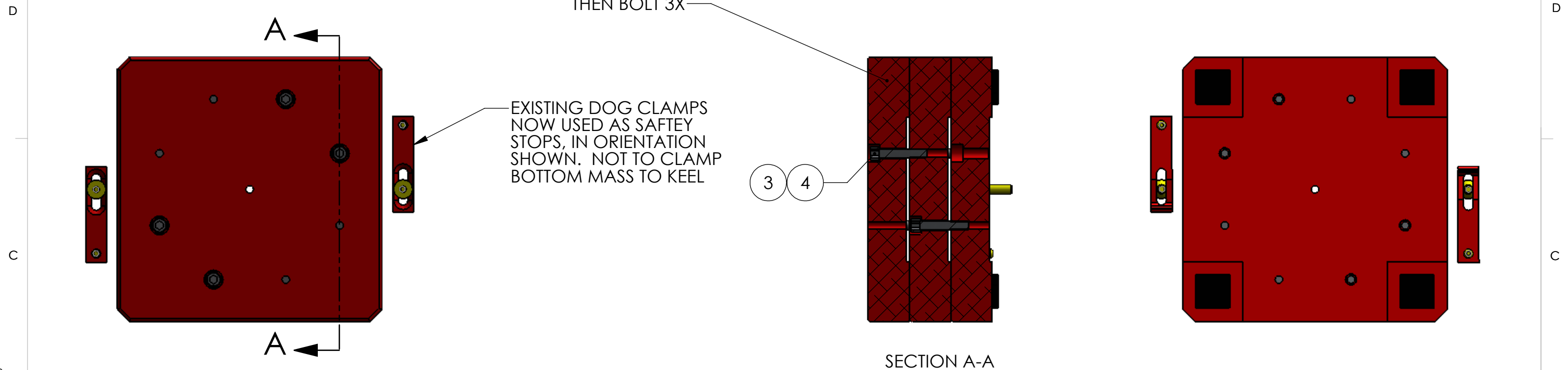


8 7 6 5 4 3 2 1

REV.	DATE	DCN #	DRAWING TREE #
v1	30 Nov. 2010	E1000758	E1000025
v2	29 AUG 2012	E1200792	
v3	17 SEP 2012		

NOTES:
 1. VENDOR REFERENCES ARE PROVIDED AS EXAMPLES OF PARTS MEETING ALL REQUIRED SPECIFICATIONS. EQUIVALENTS ARE ALWAYS ACCEPTABLE UNLESS OTHERWISE SPECIFIED.
 2. REFER TO LIGO E0900357 FOR ASSEMBLY AND LOADING PROCEDURE.



STACK, ROTATE TO POSITION THEN BOLT 3X

EXISTING DOG CLAMPS NOW USED AS SAFETY STOPS, IN ORIENTATION SHOWN. NOT TO CLAMP BOTTOM MASS TO KEEL

SECTION A-A

7	92765A512	OVAL POINT SET SCREW 3/8-16 X 1 1/2 LG	18-8 SSTL	2
6	91771A632	3/8-16 X 2" LG FLAT HEAD SCREW	18-8 SSTL	2
5	MSC_88364898	CLAMP	304 SSTL	2
4	HOLOKROME_78106	SHCS 3/8-16x2"	18-8 SS	8
3	UC_COMPONENTS_WFV-38	Washer Vented, .39 ID X .63 OD X .032 THK #3/8"	18-8 SS	8
2	D1201272	BALLAST MASS DAMP PAD, αLIGO BSC-ISI	FLUROELASTOMER	4
1	D1003136	BALLAST MASS, αLIGO BSC-ISI	304, 316 OR 302 SSTL	3
ITEM NO.	PART NUMBER	DESCRIPTION	MATERIAL	Default/REQ

PARTS LIST

NOTES AND TOLERANCES: (UNLESS OTHERWISE SPECIFIED)

CALIFORNIA INSTITUTE OF TECHNOLOGY MASSACHUSETTS INSTITUTE OF TECHNOLOGY		PART NAME BALLAST MASS ASSEMBLY, αLIGO BSC ISI	
SYSTEM ADVANCED LIGO	SUB-SYSTEM SEI	DESIGNER M.HILLARD 30 Nov. 2010	SIZE DWG. NO. B D1003143
DRAFTER M.HILLARD 30 Nov. 2010	CHECKER F.MATICHARD 30 Nov. 2010	APPROVAL K.MASON 30 Nov. 2010	REV. v3
MATERIAL FINISH NEXT ASSY D0901182	SCALE: 1:4 PROJECTION:	SHEET 1 OF 1	

D1003143 BALLAST MASS ASSEMBLY, αLIGO BSC ISI, PART PDM REV: X-006, DRAWING PDM REV: X-006

8 7 6 5 4 3 2 1