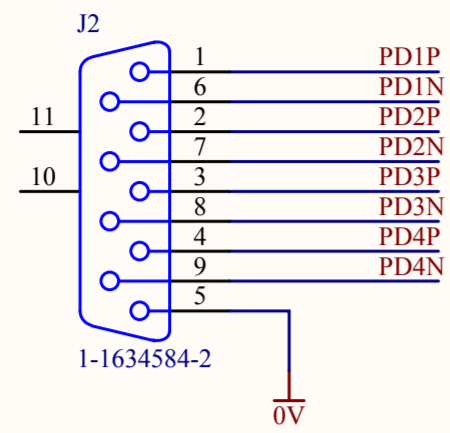
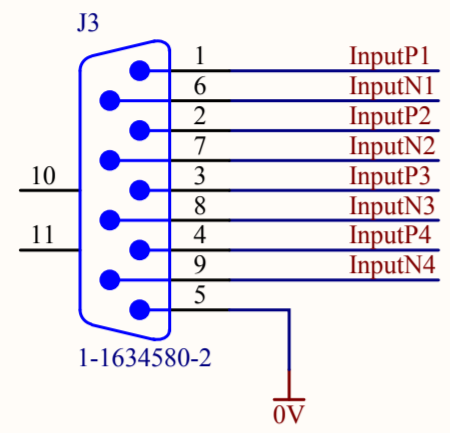


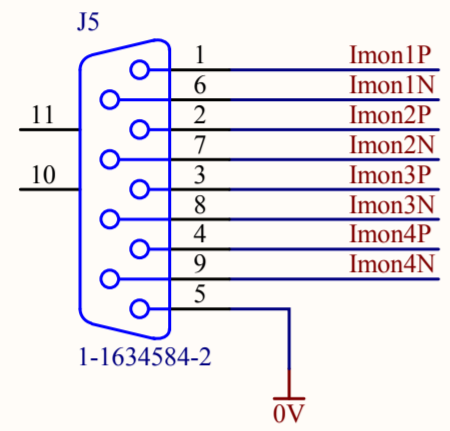
**PHOTODIODE OUTPUTS**



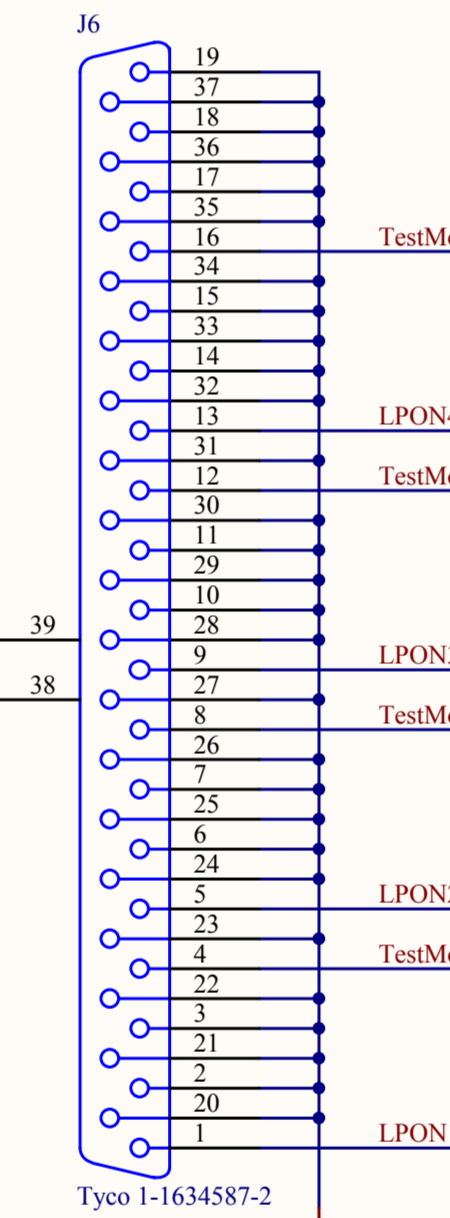
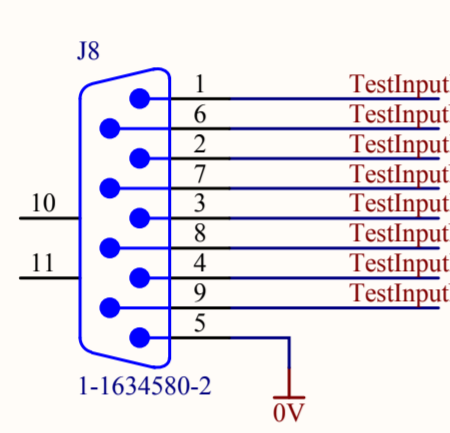
**DEMANDS**



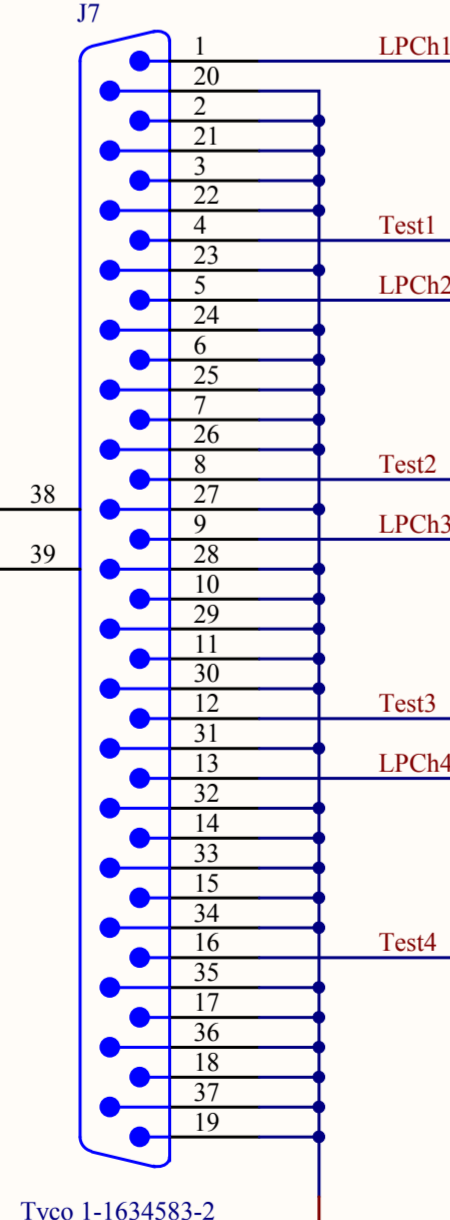
**CURRENT SOURCE MONITORS**



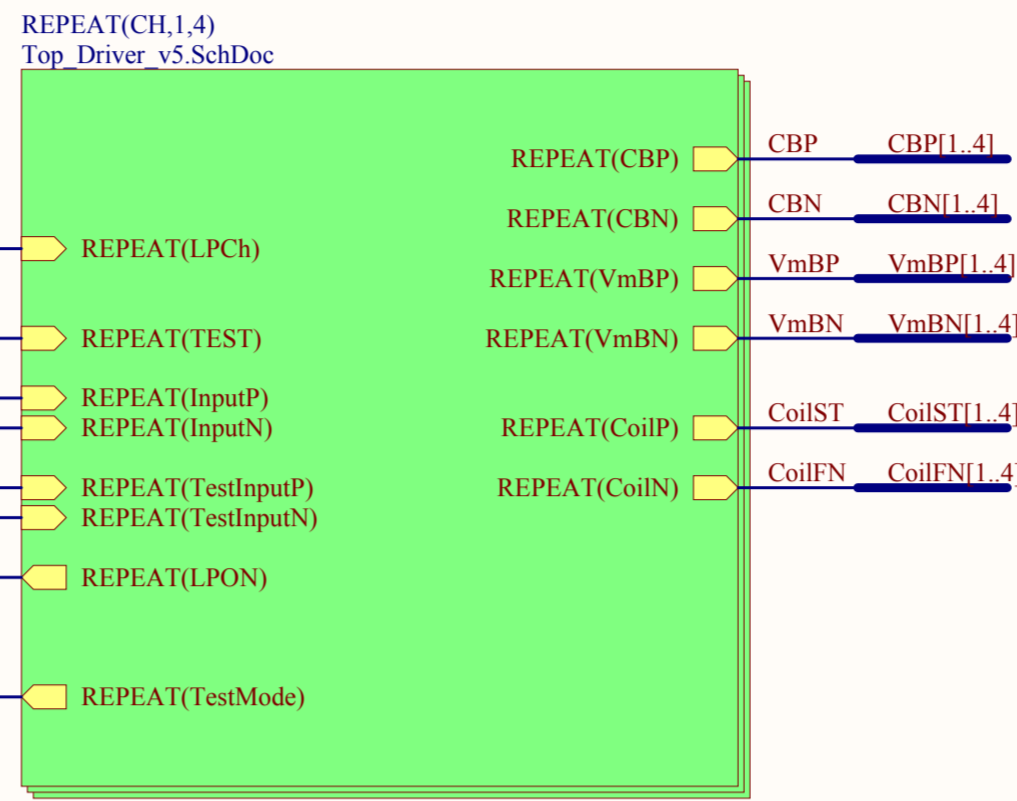
**Front Panel Test Inputs**



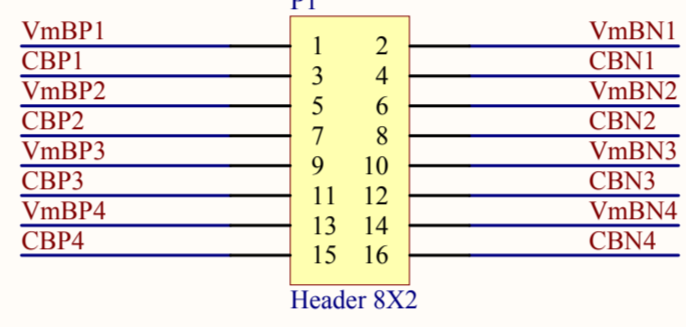
**Relay Monitors D Connector 37 Way Female**



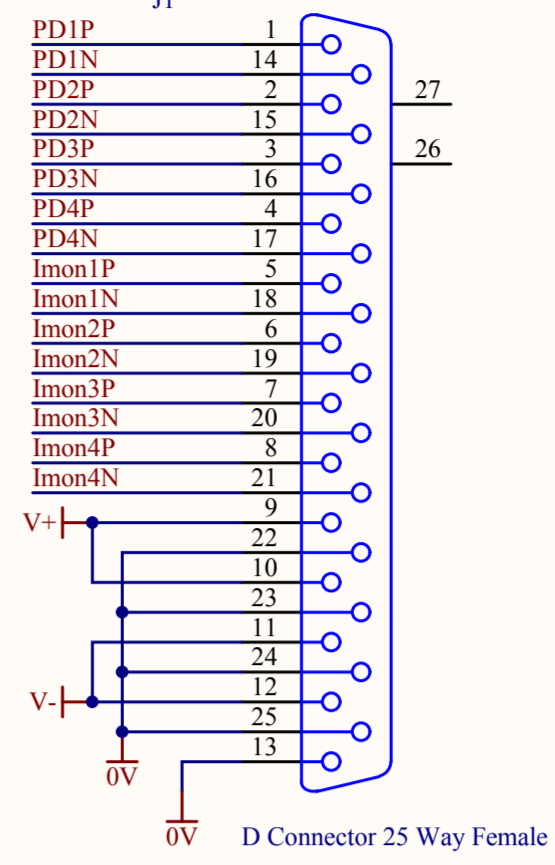
**Relay Commands D Connector 37 Way Male**



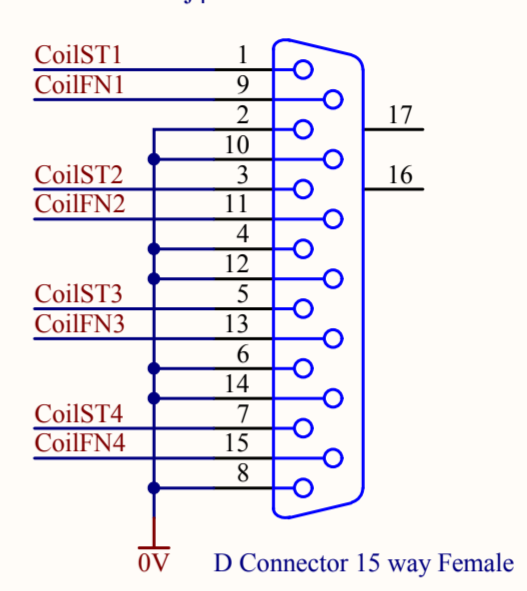
**Connections to Monitor Board**



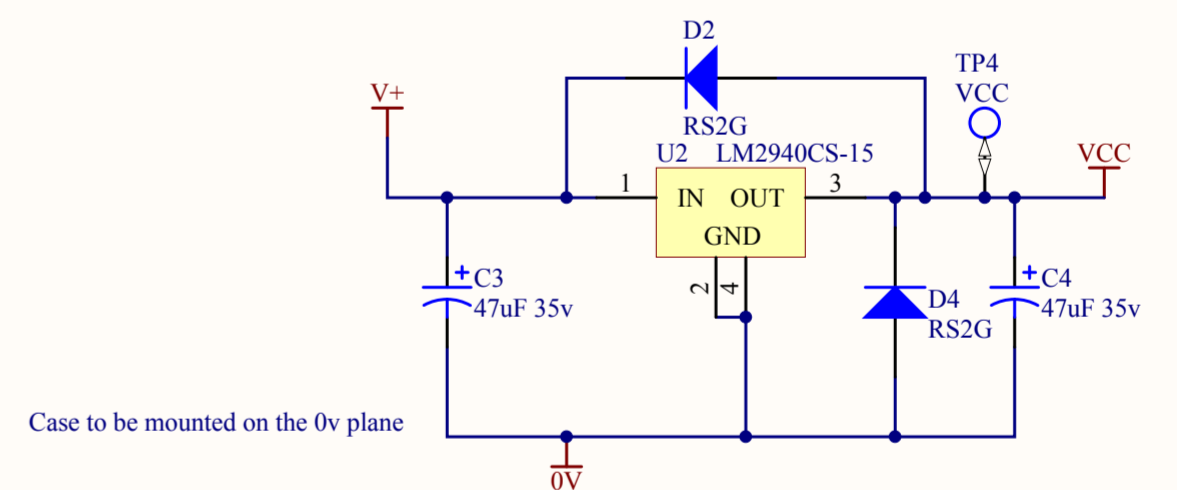
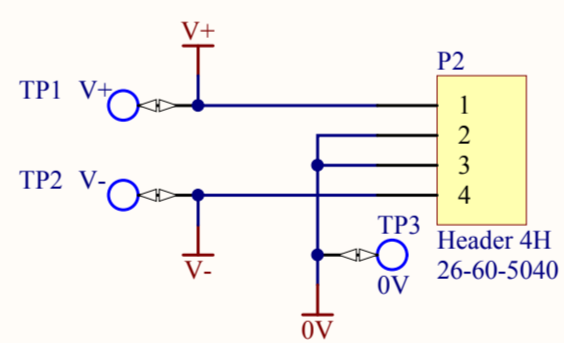
**FROM SATELLITE BOX**



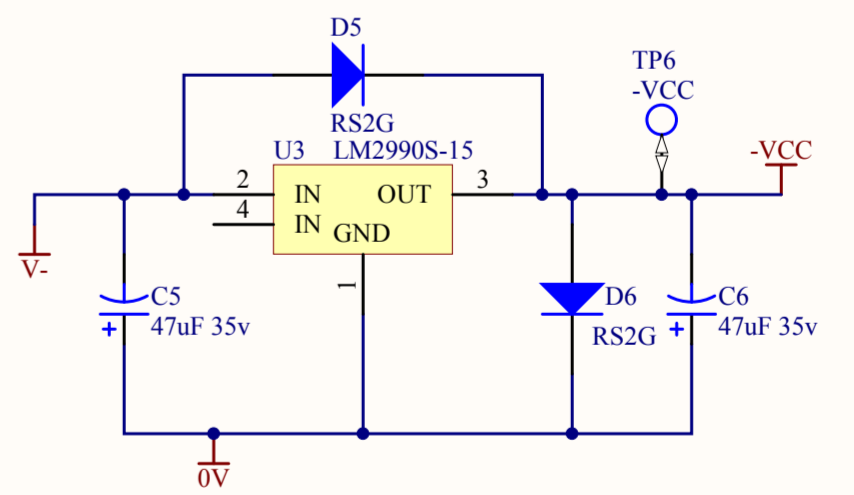
**TO SATELLITE BOX**



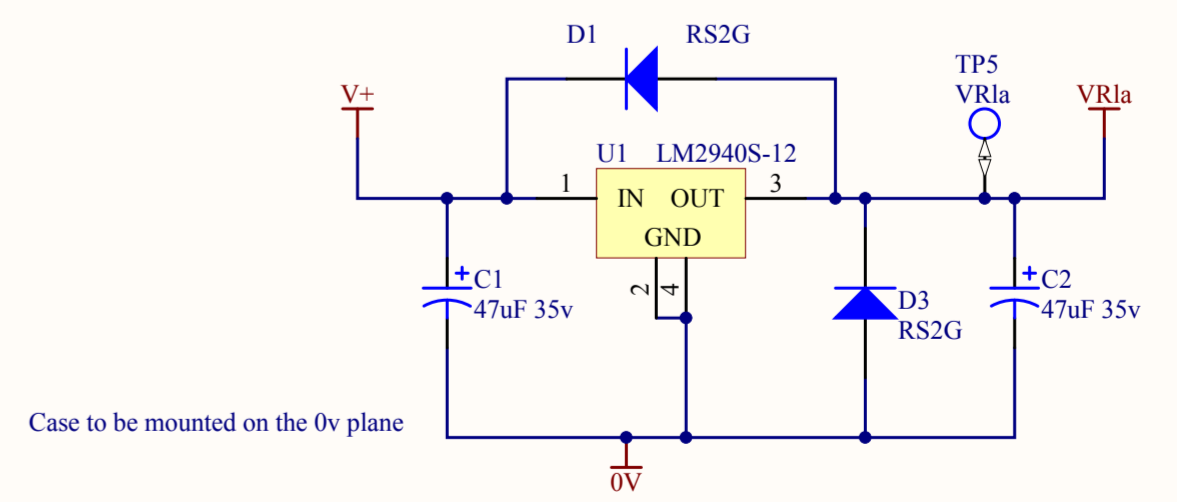
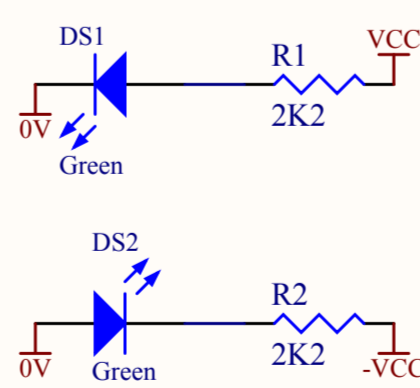
**Power connection to rear panel**



Case to be mounted on the 0v plane

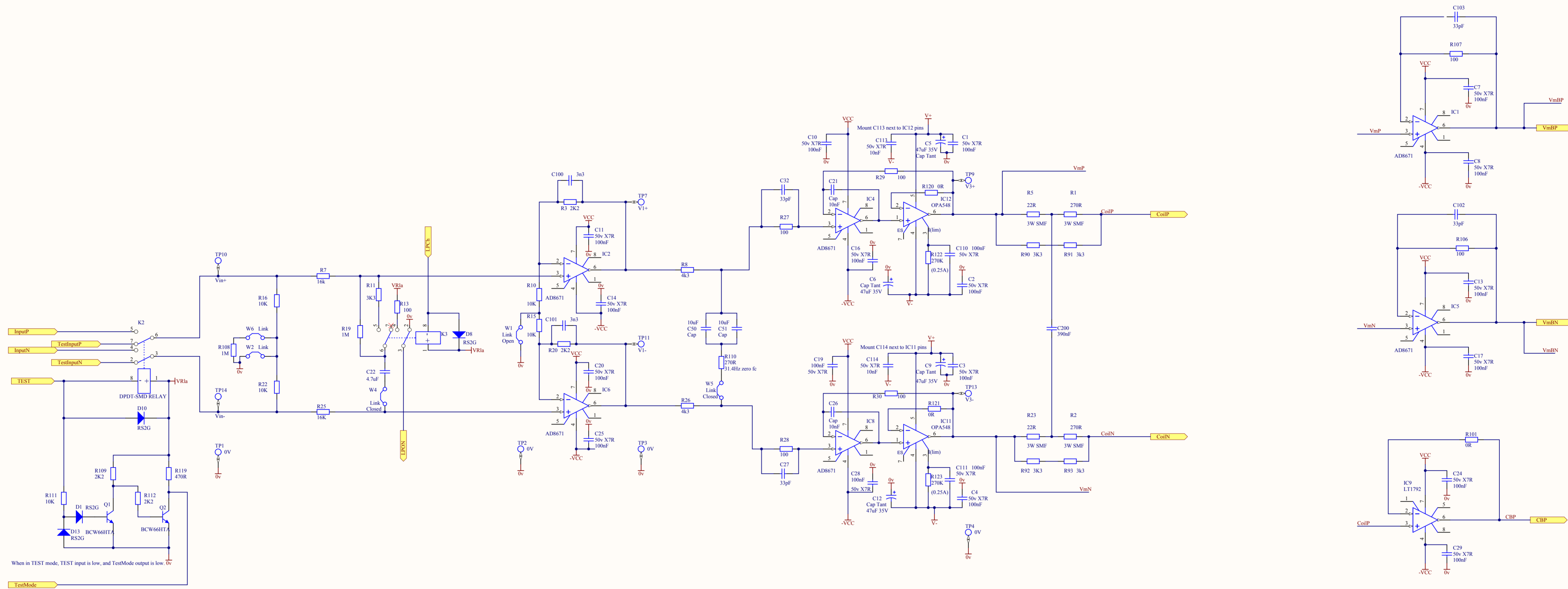


Case to be mounted on an electrically isolated area of copper at least 1" square.

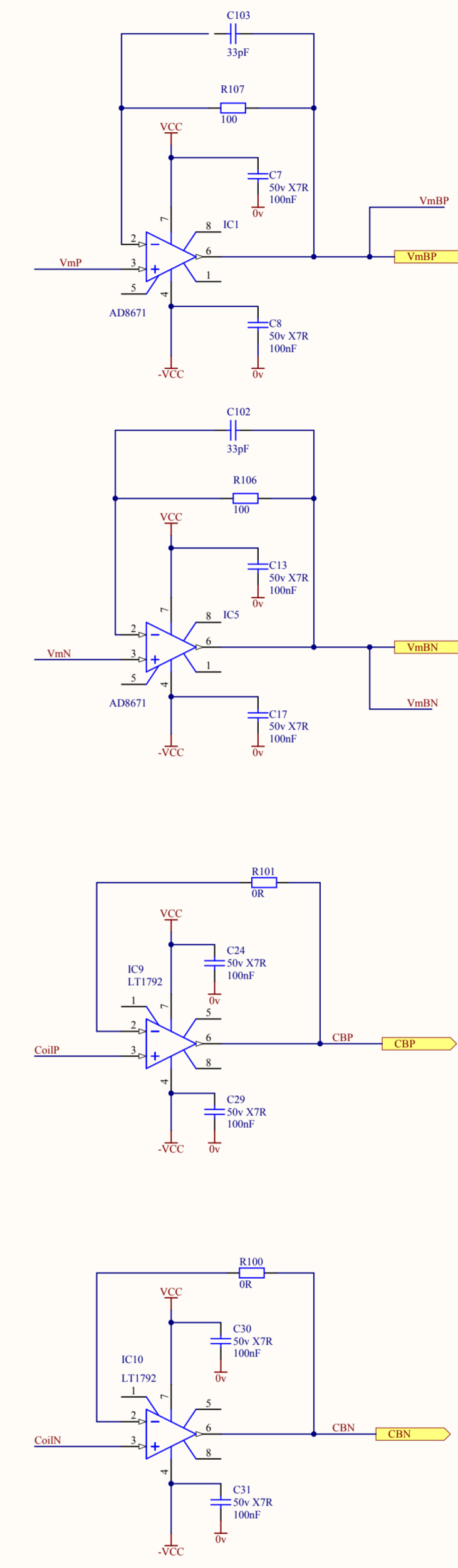


Case to be mounted on the 0v plane

Title		
<b>OMC BOARD - Production</b>		
Size	Number	Revision
C	<b>D1003116_v2</b>	<b>2</b>
Date:	23/11/2010	Sheet 1 of 2
File:	G:\Ron\...\OMC_Board_v2.SchDoc	Drawn By: Ron Cutler



- CHANGES**
- (1) IC4 and IC8 changed to AD8671
  - (2) C21 and C26 changed to 10nF; V2
  - (3) C102, C103 added (33pF)
  - (4) IC1, IC5 changed to AD8671
  - (5) Silk Screen changed to OMC
  - (6) Resistor value changes: R1, R2 = 270R 3W. R5, R23=22R 3W. R90, R91,R92,R93 = 3K3
  - (7) Capacitor C200 added after assembly



Title			OMC DRIVER CHANNEL - Production		
Size	Number	Revision			
D	D1003116 v2	2			
Date	23/11/2010	Sheet 2 of 2			
File	G:\Rom\OMC_Driver_v2\SchDoc	Drawn By:	Ron Cutler		