



DOCUMENT CHANGE NOTICE (DCN)

DOCUMENT No. (DOC-REV-GP. ID)	TITLE	NEW REV.
D980218-00	I. O. BAFFLE, GLASS, BOTTOM RIGHT	A
D980691-A	I. O. BAFFLE, GLASS, TOP LEFT	B
D980692-A	I. O. BAFFLE, 2K, GLASS, TOP RIGHT	B
D980693-A	I. O. BAFFLE, GLASS, BOTTOM LEFT	B
D980694-A	I. O. BAFFLE, GLASS, TOP LEFT SEGMENT	B
D990617-A	I. O. BAFFLE, 4K, GLASS, TOP RIGHT	B

CHANGE DESCRIPTION (FROM/TO):

D980218-A

Initial Release (Right hand plate-see D980693-B, multi-use modification)

D980691:-B, D980692-B, D980693-B, D990617-B

Re dimensioned to eliminate unnecessary machining of stock surface.

D980693-B:

Modified from multi-use (right hand/left hand) glass plate to left hand only plate.
 Fabrication process requires orientation and marking of back surface.

ALL DRAWINGS:

Revised masking note to allow processing from both sides and to assist shipping.

REASON FOR CHANGE: noted

ACTION: Incorporate change Attach DCN to drawing(s) Other action (specify):

DISPOSITION OF HARDWARE (IDENTIFY SERIAL NUMBERS)

- No hardware affected (record change only)
- List S/Ns which comply already:
- List S/Ns to be reworked or scrapped:
- List S/Ns to be built with this change: All
- List S/Ns to be retested per this change:
-
-
-
-

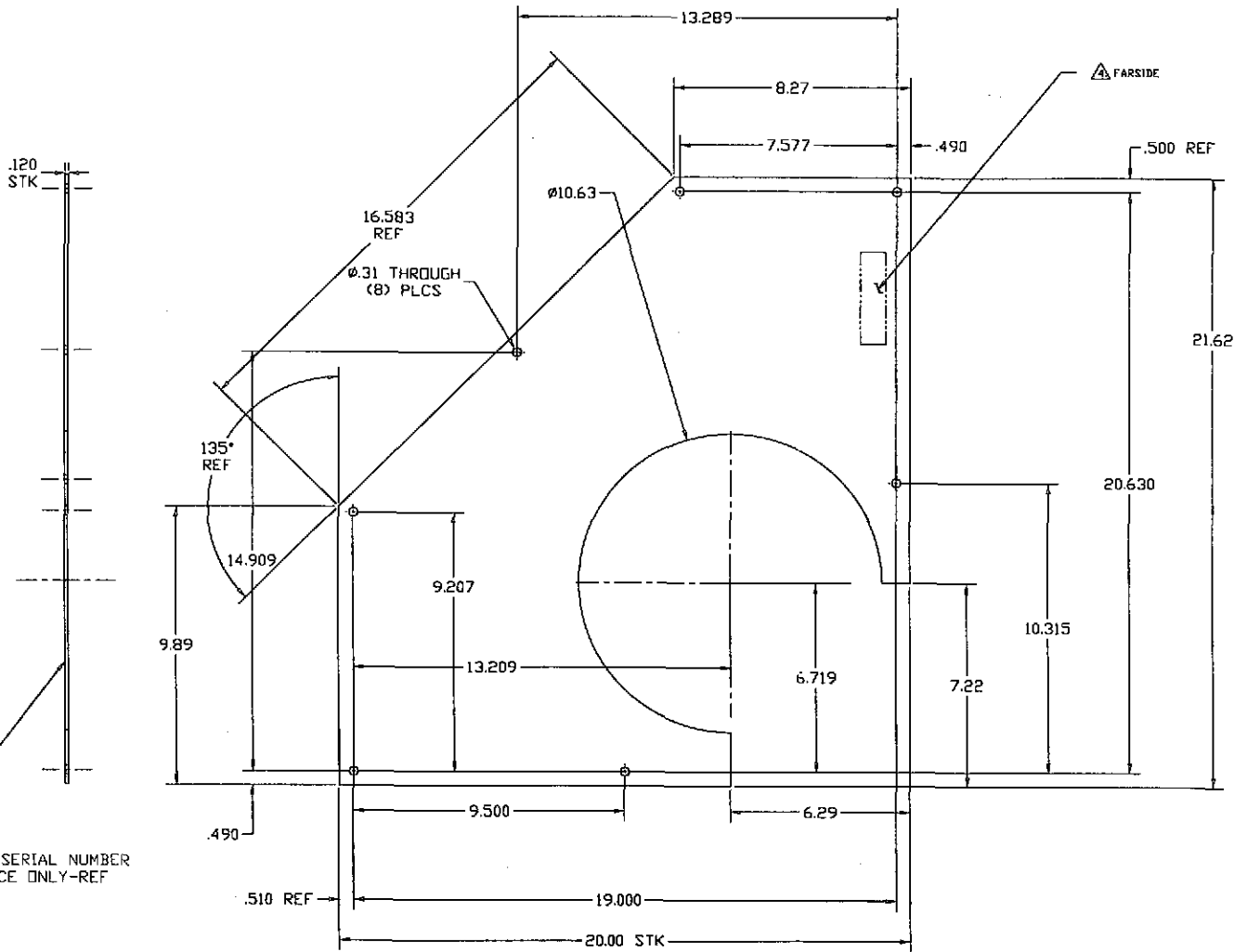
DCN DISTRIBUTION (X=incl. docs)

Aithouse	Barish	Coles
Coyne	Lazzarini	Lindquist
Raab	Sanders	Shoemaker
Stapfer	Tyler	Weiss
Whitcomb	Zydowicz	
P. Kabot	M. Smith	
X B. Weaver	K. Mailand	
J. Camp	L. Jones	
X J. Kern		

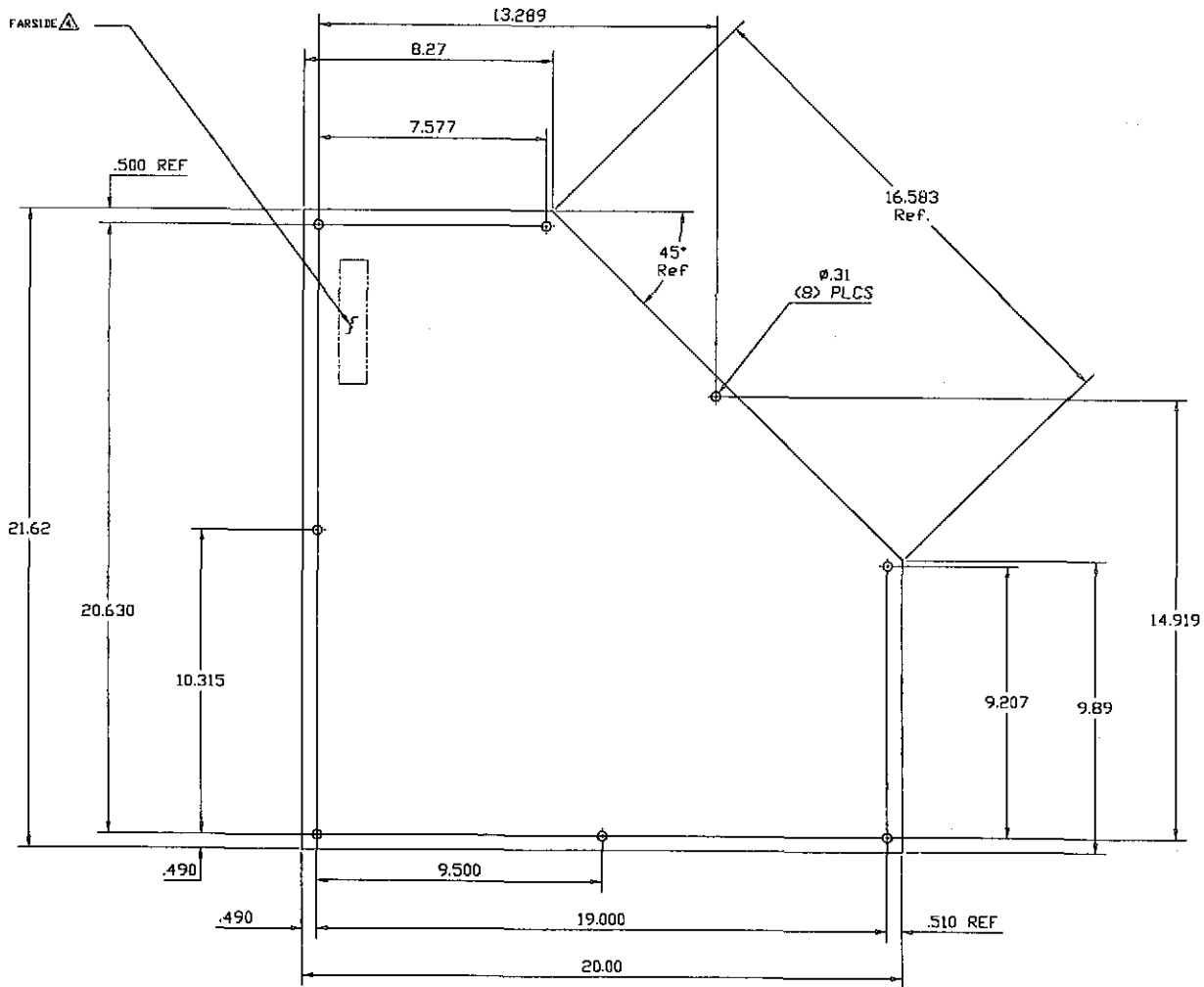
SAFETY, COST, SCHEDULE, REQUIREMENTS IMPACT? No Yes (If yes, enter Change Request number)

APPROVALS	DATE	OTHER APPROVALS (specify)	DATE
ORIGINATOR: P. Kabot	11/29/99		
TASK LEADER: M. Smith <i>Michael Smith</i>	12/15/99		
GROUP LEADER: D. Coyne <i>D. Coyne</i>	1/4/00		
DCC RELEASE: L. Turner <i>L. Turner</i>	1-5-00		

- NOTES: (UNLESS OTHERWISE SPECIFIED)
- ⚠ ALL ABRASIVE CUTTING TO BE DONE FROM NEAR SIDE.
 - ⚠ GLASS TO BE COVERED BY VINYL MASK ON BOTH SIDES PRIOR TO START OF MACHINING, AND REMOVED BEFORE SHIPMENT.
 - ⚠ MAKE FROM #12 WELDERS FILTER GLASS (SDHOT) 0.12" THICK.
 - ⚠ ETCH OR ENGRAVE THE DRAWING PART NUMBER ON NOTED FACE OF PART FOLLOWED BY 'S/N', THEN A THREE DIGIT SERIAL NUMBER. SERIAL NUMBERS TO START AT 001 FOR FIRST PART AND PRICED IN A CONSECUTIVE MANNER TO A MAXIMUM OF 999, FOR EACH SUCCEEDING PART PRODUCED. USE 0.13" HIGH CHARACTERS. EXAMPLE: D99003B-A S/N 001



		UNLESS OTHERWISE SPECIFIED DIMENSIONS ARE IN INCHES				LIGO CALIFORNIA INSTITUTE OF TECHNOLOGY MACHINING & TOOLING INSTITUTE OF TECHNOLOGY					
		TOLERANCES: FRACTIONAL ± 1/64 ANGULAR ± 1/2° RADIUS ± .010		THREE PLACE DECIMAL ± .005 FINISHED SURFACE RMC BREAK CORNERS .250-.500 REMOVE ALL BURRS						1.0. BAFFLE, GLASS, TOP LEFT	
		MATERIAL: ⚠	HEAT TREAT:	FINISH: ⚠ ⚠ ⚠						DATE FILE	
DRAWING NO. REFERENCE DRAWINGS		USED ON:	NEXT ASSY: D990597, D990616	REV		ISSUE DESCRIPTION		APPR'D		CHECK	DRAWN
				A		E990036		KABOT		11-21-99	
				B		E990036		KABOT		10-9-99	
				C		PRE-RELEASE		A. ROSA		12-14-98	
				D		DESCRIPTION		DATE		SCALE	
				E						1 OF 1	



NOTES: (UNLESS OTHERWISE SPECIFIED)

- ⚠ ALL ABRASIVE CUTTING TO BE DONE FROM NEAR SIDE.
- ⚠ GLASS TO BE COVERED BY VINYL MASK ON NEAR SIDE PRIOR TO START OF MACHINING, AND REMOVED BEFORE SHIPMENT.
- ⚠ MAKE FROM: #12 WELDERS FILTER GLASS (SCHOTT) 0.12" THICK.
- ⚠ ETCH OR ENGRAVE THE DRAWING PART NUMBER ON NOTED FACE OF PART FOLLOWED BY "S/N", THEN A THREE DIGIT SERIAL NUMBER SERIAL NUMBERS TO START AT 001 FOR FIRST PART AND PROCEED IN A CONSECUTIVE MANNER TO A MAXIMUM OF 999, FOR EACH SUCCEEDING PART PRODUCED. USE 0.12" HIGH CHARACTERS. EXAMPLE: D990036-A S/N 001

PART & SERIAL NUMBER THIS FACE ONLY-REF

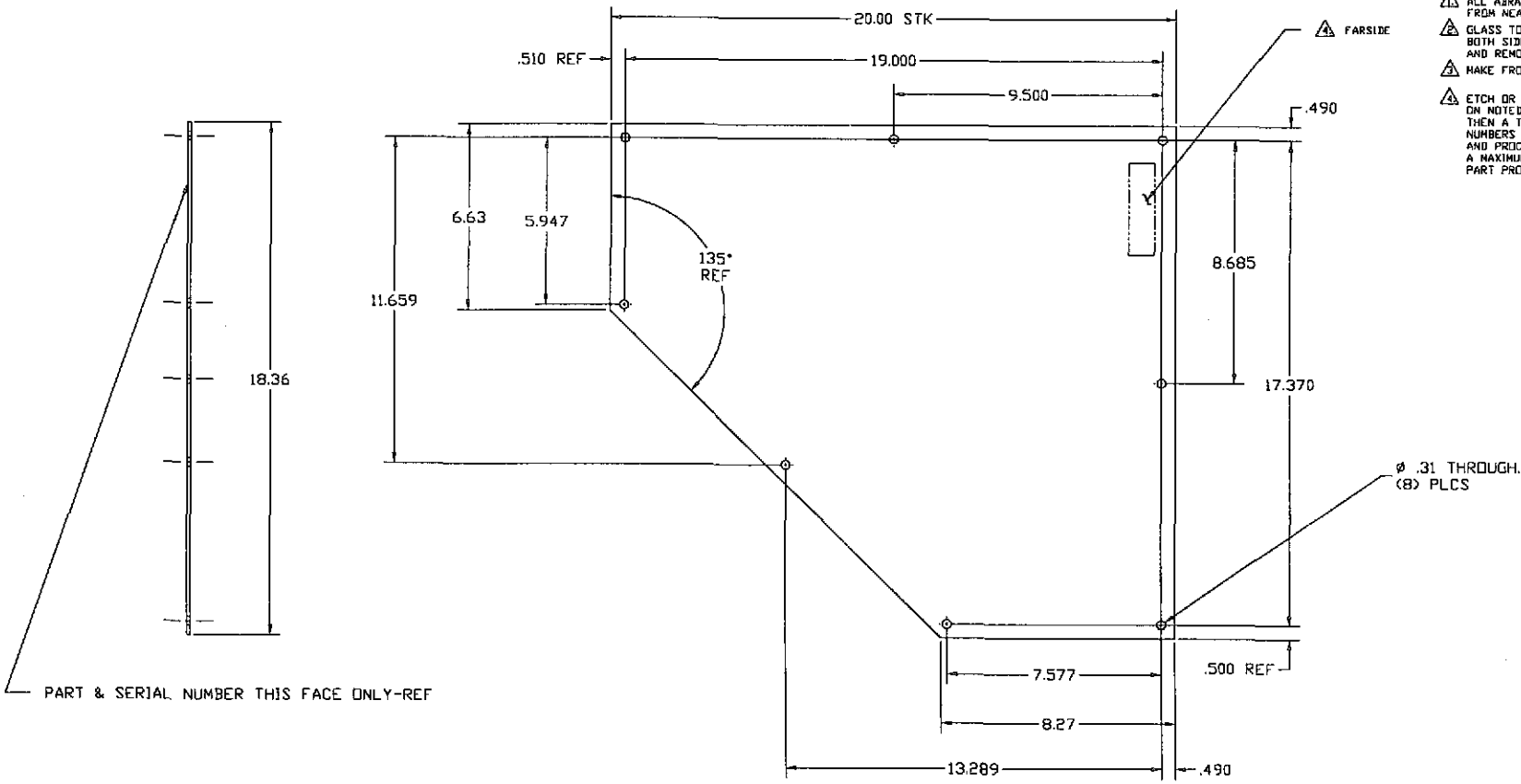
<p>UNLESS OTHERWISE SPECIFIED DIMENSIONS ARE IN INCHES</p> <p>TOLERANCES: FRACTIONAL ± 1/64 ANGULAR ± 1/2° ANGULARHORN ± 3/32" TWO PLACE DECIMAL ± .01</p> <p>THREE PLACE DECIMAL ± .005 FINISHED SURFACE RMS BREAK CORNERS .002-.016 REMOVE ALL BURRS</p>		<p>REVISIONS</p> <table border="1"> <tr> <th>REV</th> <th>DESCRIPTION</th> <th>DATE</th> <th>BY</th> </tr> <tr> <td>B</td> <td>REVISED</td> <td></td> <td></td> </tr> <tr> <td>A</td> <td>RELEASE</td> <td></td> <td></td> </tr> <tr> <td>00</td> <td>PRE-RELEASE</td> <td></td> <td></td> </tr> </table>		REV	DESCRIPTION	DATE	BY	B	REVISED			A	RELEASE			00	PRE-RELEASE			<p>DATE</p> <table border="1"> <tr> <th>DATE</th> <th>BY</th> </tr> <tr> <td>11-10-99</td> <td>KABDT</td> </tr> <tr> <td>3-10-99</td> <td>KABDT</td> </tr> <tr> <td>12-14-98</td> <td>A. KIDA</td> </tr> </table>		DATE	BY	11-10-99	KABDT	3-10-99	KABDT	12-14-98	A. KIDA	<p>ISSUE DESCRIPTION</p> <table border="1"> <tr> <th>APPROV</th> <th>CHECK</th> <th>DRWN</th> <th>DATE</th> <th>SCALE</th> <th>NTS</th> </tr> <tr> <td></td> <td></td> <td></td> <td></td> <td></td> <td></td> </tr> </table>		APPROV	CHECK	DRWN	DATE	SCALE	NTS							<p>FIG. NO. DESCRIPTION</p> <table border="1"> <tr> <th>FIG. NO.</th> <th>DESCRIPTION</th> </tr> <tr> <td></td> <td>REFERENCE DRAWINGS</td> </tr> </table>		FIG. NO.	DESCRIPTION		REFERENCE DRAWINGS	<p>USED IN: NEXT ASSY: D990997</p>		<p>ISSUE DESCRIPTION</p> <table border="1"> <tr> <th>ISSUE</th> <th>DESCRIPTION</th> </tr> <tr> <td></td> <td></td> </tr> </table>		ISSUE	DESCRIPTION			<p>APPROV: CHECK: DRWN: DATE: SCALE: NTS:</p>		<p>DATE: 12-14-98</p>		<p>SCALE: NTS:</p>		<p>DATE: 12-14-98</p>		<p>SCALE: NTS:</p>		<p>DATE: 12-14-98</p>		<p>SCALE: NTS:</p>	
REV	DESCRIPTION	DATE	BY																																																																				
B	REVISED																																																																						
A	RELEASE																																																																						
00	PRE-RELEASE																																																																						
DATE	BY																																																																						
11-10-99	KABDT																																																																						
3-10-99	KABDT																																																																						
12-14-98	A. KIDA																																																																						
APPROV	CHECK	DRWN	DATE	SCALE	NTS																																																																		
FIG. NO.	DESCRIPTION																																																																						
	REFERENCE DRAWINGS																																																																						
ISSUE	DESCRIPTION																																																																						

LIGO CALIFORNIA INSTITUTE OF TECHNOLOGY MASSACHUSETTS INSTITUTE OF TECHNOLOGY

J. D. BAFFLE, 2K, GLASS, TOP RIGHT

D980692-B

NOTES: (UNLESS OTHERWISE SPECIFIED)
 ⚠ ALL ABRASIVE CUTTING TO BE DONE FROM NEAR SIDE.
 ⚠ GLASS TO BE COVERED BY VINYL MASK ON BOTH SIDES PRIOR TO START OF MACHINING, AND REMOVED BEFORE SHIPMENT.
 ⚠ MAKE FROM #12 WELDERS FILTER GLASS (SCHOTT) 0.12" THICK.
 ⚠ ETCH OR ENGRAVE THE DRAWING PART NUMBER ON NOTED FACE OF PART FOLLOWED BY "S/N", THEN A THREE DIGIT SERIAL NUMBER. SERIAL NUMBERS TO START AT 001 FOR FIRST PART AND PROCEED IN A CONSECUTIVE MANNER TO A MAXIMUM OF 999, FOR EACH SUCCEEDING PART PRODUCED. USE 0.13 HIGH CHARACTERS.
 EXAMPLE: D990036-A S/N 001



UNLESS OTHERWISE SPECIFIED
DIMENSIONS ARE IN INCHES

TOLERANCES: FRACTIONAL ± 1/64 ANGULAR ± 1/2° ANGULAR HORN ± BEND ± TWO PLACE DECIMAL ± .01	THREE PLACE DECIMAL ± .005 FINISHED SURFACE RMC BREAK CORNERS .010-.015 REMOVE ALL BURRS
--	---

MATERIAL: ⚠ HEAT TREAT: FINISH: ⚠ ⚠ ⚠

USED ON: HEAT ASSY: D990099, D990016

REVISED	E990406	-	-	-	KABOT	11-10-99
RELEASE	E990036	-	-	-	KABOT	10-5-99
PRE-RELEASE	-	-	-	-	A. ROSA	12-14-98
REV	DESCRIPTION	DCN NUMBER	APPRO'D	CHECK	DOWN	DATE

LIGO CALIFORNIA INSTITUTE OF TECHNOLOGY
 MASSACHUSETTS INSTITUTE OF TECHNOLOGY

**I. D. BAFFLE,
GLASS, BOTTOM LEFT**

ISSUE NO: **D980693-B**

DATE: 10/14/99

SCALE: NTS

SHEET: 1 OF 1

ENG. NO.	DESCRIPTION
	REFERENCE DRAWINGS

NOTES: (UNLESS OTHERWISE SPECIFIED)

- ⚠ ALL ABRASIVE CUTTING TO BE DONE FROM NEAR SIDE.
- ⚠ GLASS TO BE COVERED BY VINYL MASK ON BOTH SIDES PRIOR TO START OF MACHINING, AND REMOVED BEFORE SHIPMENT.
- ⚠ MAKE FROM: #12 WELDERS FILTER GLASS (SCHOTT) 0.12" THICK.
- ⚠ ETCH OR ENGRAVE THE DRAWING PART NUMBER ON NOTED FACE OF PART FOLLOWED BY "S/N", THEN A THREE DIGIT SERIAL NUMBER, SERIAL NUMBERS TO START AT 001 FOR FIRST PART AND PROCEED IN A CONSECUTIVE MANNER TO A MAXIMUM OF 999, FOR EACH SUCCEEDING PART PRODUCED. USE 0.13 HIGH CHARACTERS. EXAMPLE: 099003B-A S/N 001

.120 STK

R5.315

6.281

.490 REF

.490 REF

7.209

6.219 7.20

Ø.31 THROUGH (3) PLCS

.490 REF

.490 REF

5.291

.490

6.27

PART & SERIAL NUMBER THIS FACE ONLY-REF

⚠ FARSIDE

UNLESS OTHERWISE SPECIFIED
DIMENSIONS ARE IN INCHES

TOLERANCES:
FRACTIONAL ± 1/64
ANGULAR ± 1/2°
ANGLE HORN ± .002 ± .01
TWO PLACE DECIMAL ± .01

THREE PLACE DECIMAL ± .005
FINISHED SURFACE RMS
BREAK CORNERS .002-.010
REMOVE ALL BURRS

REV	DESCRIPTION	ISSUE NUMBER	APPR'D	CHECK	DRWN	DATE
B	REVISED	E990406	-	-	-	KABOT 11-29-99
A	RELEASE	E990036	-	-	-	KABOT 10-5-99
00	PRE-RELEASE	-	-	-	-	A. ROSEN 4-23-98
REV	DESCRIPTION	ISSUE NUMBER	APPR'D	CHECK	DRWN	DATE

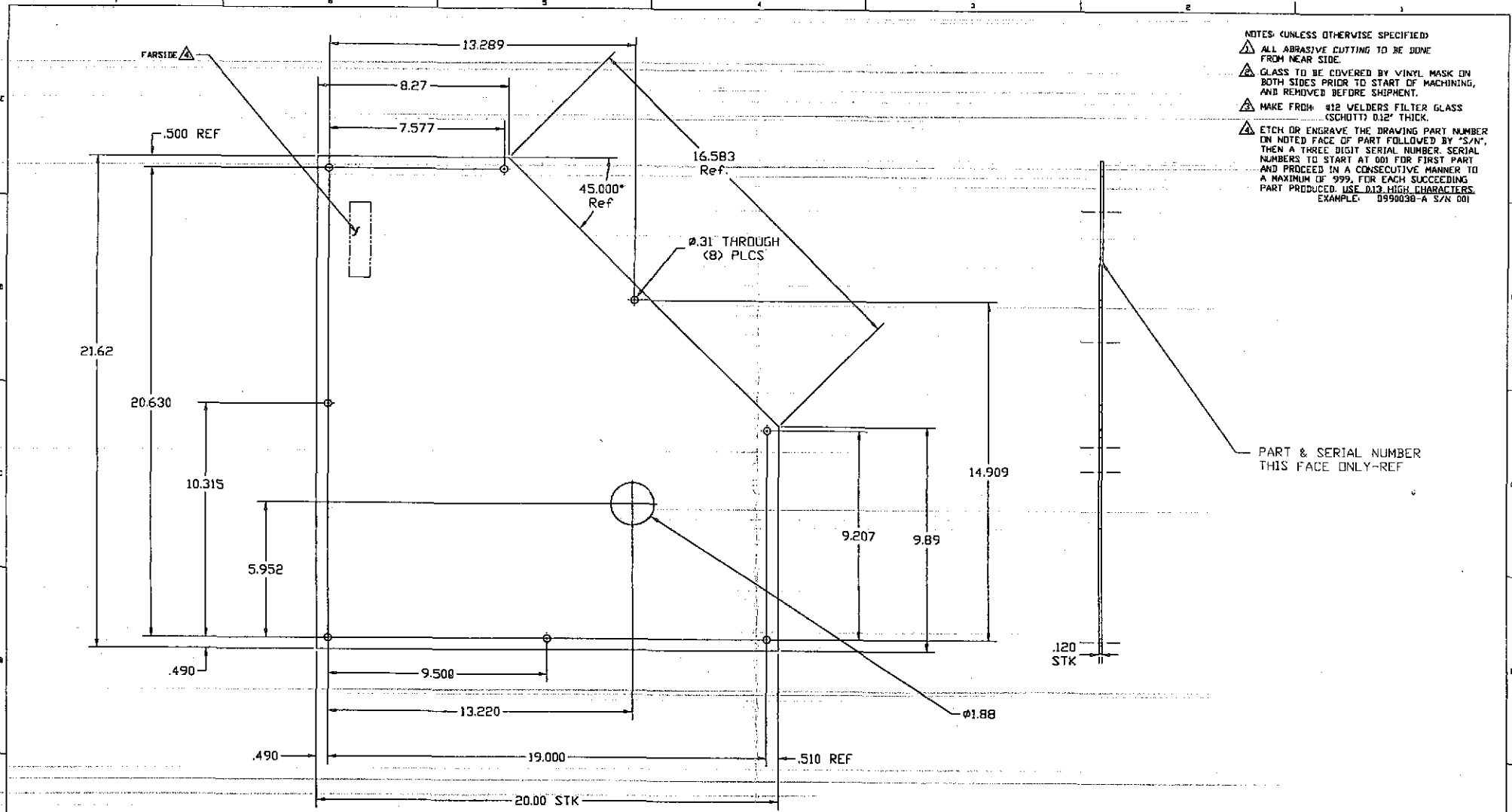
LIGD CALIFORNIA INSTITUTE OF TECHNOLOGY
MASSACHUSETTS INSTITUTE OF TECHNOLOGY

I. D. BAFFLE
GLASS, TDP LEFT SEGMENT

DWG. NO.	DESCRIPTION	MATERIAL	HEAT TREAT	FINISH
REFERENCE DRAWINGS				
USED ON				

NEAT ASS'Y: 0990597, 0990616

FIG FILE 10_09714.dwg
SHEET 1 OF 1



- NOTES: UNLESS OTHERWISE SPECIFIED:
- ⚠ ALL ABRASIVE CUTTING TO BE DONE FROM NEAR SIDE.
 - ⚠ GLASS TO BE COVERED BY VINYL MASK ON BOTH SIDES PRIOR TO START OF MACHING, AND REMOVED BEFORE SHIPMENT.
 - ⚠ MAKE FROM #12 WELDERS FILTER GLASS (SCHOTT) 0.12" THICK.
 - ⚠ ETCH OR ENGRAVE THE DRAWING PART NUMBER ON NOTED FACE OF PART FOLLOWED BY "S/N", THEN A THREE DIGIT SERIAL NUMBER. SERIAL NUMBERS TO START AT 001 FOR FIRST PART AND PROCEED IN A CONSECUTIVE MANNER TO A MAXIMUM OF 999, FOR EACH SUCCEEDING PART PRODUCED. USE 013 HIGH CHARACTERS. EXAMPLE: 0990030-A S/N 001

PART & SERIAL NUMBER THIS FACE ONLY-REF

UNLESS OTHERWISE SPECIFIED DIMENSIONS ARE IN INCHES		TOLERANCES: FRACTIONAL ± 1/64 ANGULAR ± 1/2° ANGULAR/CHAMF ± 3/32° ± .01		THREE PLACE DECIMAL ± .005 FINISHED SURFACE RITE BREAK CORNERS .002-.010 REMOVE ALL BURRS		MATERIAL: ⚠		HEAT TREAT: ⚠		FINISH: ⚠ ⚠ ⚠		REVISED		E990486		RABOT 11-11-99		CALIFORNIA INSTITUTE OF TECHNOLOGY MASSACHUSETTS INSTITUTE OF TECHNOLOGY	
USE 3 DR		NEXT ASSY: 0990616		ISSUE DESCRIPTION		PRE-RELEASE		E990390		RABOT 10-5-99		A. RISN		12-14-98		D990617-B		1 OF 1	