



CALIFORNIA INSTITUTE OF TECHNOLOGY  
 MASSACHUSETTS INSTITUTE OF TECHNOLOGY

DCN No. **E990244-00-D**

SHEET **1** OF **1**

# DOCUMENT CHANGE NOTICE (DCN)

DOCUMENT No. (DOC-REV-GP. ID)	TITLE	NEW REV.
D990141-C	Cavity Beam Dump Housing Assembly, BSC7, 2KFMXX & 2KFMXY, BSC8, 2KFMYX & 2KFMY	D
D990225-D	Cavity Beam Dump Housing Tube, BSC7, 4KITMXHR3, 4KITMXHR4, BSC8, 4KITMYHR3 & 4KITMYHR4	E
D990252-B	Cavity Beam Dump Housing Tube, BSC4, 2KITMXAR1, 2KITMYAR1, 2KRMHR3, BSC2, 4KITMXAR1 & 4KITMYAR1	C
D990402-n/a	Cavity Beam Dump Housing Assembly, BSC7, 4KITMXHR3 & 4KITMXHR4, BSC8, 4KITMYHR3 & 4KITMYHR4	A
D990403-n/a	Cavity Beam Dump Housing Assembly, BSC2, 4KITMXAR1 & 4KITMYAR1, BSC4, 2KITMXAR1, 2KITMYAR1, & 2KRMHR3	A

**CHANGE DESCRIPTION (FROM/TO):**

D990141: Changed parts list entry item one from "-" to "D990223" in the part number column.  
 D990225: Changed Next Ass'y block entry from "D990141" to "D990402".  
 D990252: Changed Next Ass'y block entry from "D990141" to "D990403".  
 D990402 & D990403: Initial releases.

**ACTION:**  Incorporate change  Attach DCN to drawing(s)  Other action (specify):

**DISPOSITION OF HARDWARE (IDENTIFY SERIAL NUMBERS)**

- No hardware affected (record change only)
- List S/Ns which comply already:
- List S/Ns to be reworked or scrapped:
- List S/Ns to be built with this change: all parts: 001 & up
- List S/Ns to be retested per this change:
- 
- 
- 
- 

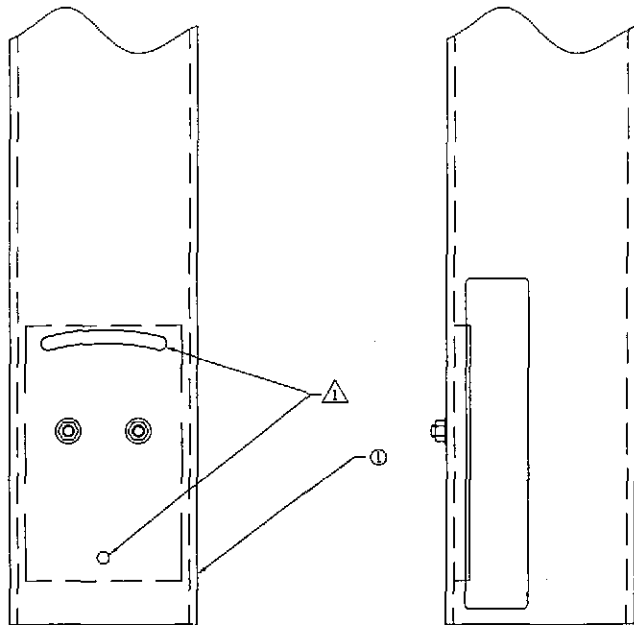
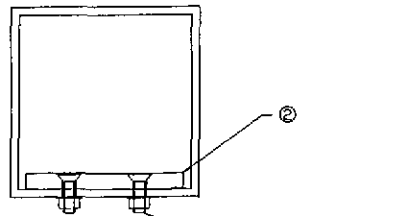
**DCN DISTRIBUTION (X=incl. docs)**

Aithouse	Barish	Coles
X Coyne	Lazzarini	Lindquist
Sanders	Shoemaker	Stapfer
Tyler	Weiss	Whitcomb
Camp		x Conley
x Jones		x Smith

**SAFETY, COST, SCHEDULE, REQUIREMENTS IMPACT?**  No  Yes (If yes, enter Change Request number )

APPROVALS:	DATE	OTHER APPROVALS (specify)	DATE
ORIGINATOR: C. Conley	6-7-99		
TASK LEADER: <i>Michael Smith</i>	<i>6/7/99</i>		
GROUP LEADER: <i>[Signature]</i>	<i>6/7/99</i>		
DCC RELEASE: <i>[Signature]</i>	<i>6-23-99</i>		

NOTES: (UNLESS OTHERWISE SPECIFIED)  
 △ ALIGN NOTED MATING FEATURES IN ITEMS  
 1 & 2 AS FOLLOWS:  
 ALIGN HOLES USING A SIZE V (#377) OR  
 V (#386) DRILL ROD OR EQUIVALENT. ROTATE  
 SLOTS INTO ALIGNMENT BY EYE, THEN FASTEN  
 HARDWARE.



REF.	QTY.	PART or DRWG No.	NOMENCLATURE or DESCRIPTION	MATERIAL
5	2	U-C Components Wfv-38	.39 ID X .625 OD X .032 THICK FLAT WASHER	18-8 ST STEEL
4	2	McM-Carr 94804A320	3/8-16 HEX NUT	316 ST STEEL
3	2	McM-Carr 90585A626	3/8-16 X 1.25 SOCKETED FLAT HEAD SCREW	316 ST STEEL
2	1	D990140	HOUSING PLATE	-
1	1	D990223	HOUSING TUBE	-

PARTS and MATERIAL LIST

SVG. NO.	DESCRIPTION	USED ON	NEXT ASSY. DRAWING	REV.	DESCRIPTION	ISSUE DESCRIPTION	APPROV.	CHECK	DRWN	DATE	SCALE	DATE FILED	FILED BY	FILE NO.	SHEET	TOTAL SHEETS
				D	DCN E990244				Coleby	6-7-99						
				C	DCN E990209				Coleby	5-13-99						
				B	DCN E990205				Coleby	3-6-99						
				A	DCN E990133				Coleby	3-17-99						
												9990141-Subag	B	D990141-D	1	1

UNLESS OTHERWISE SPECIFIED  
 DIMENSIONS ARE IN INCHES  
 TOLERANCES:  
 FRACTIONAL ±  
 ANGULAR ±  
 ANGULAR HATCH & BEND ±  
 TWO PLACE DECIMAL  
 THREE PLACE DECIMAL  
 FINISHED SURFACE RAS  
 BREAK CORNERS IN OUT  
 REMOVE ALL BURRS

MATERIAL HEAT TREAT FINISH

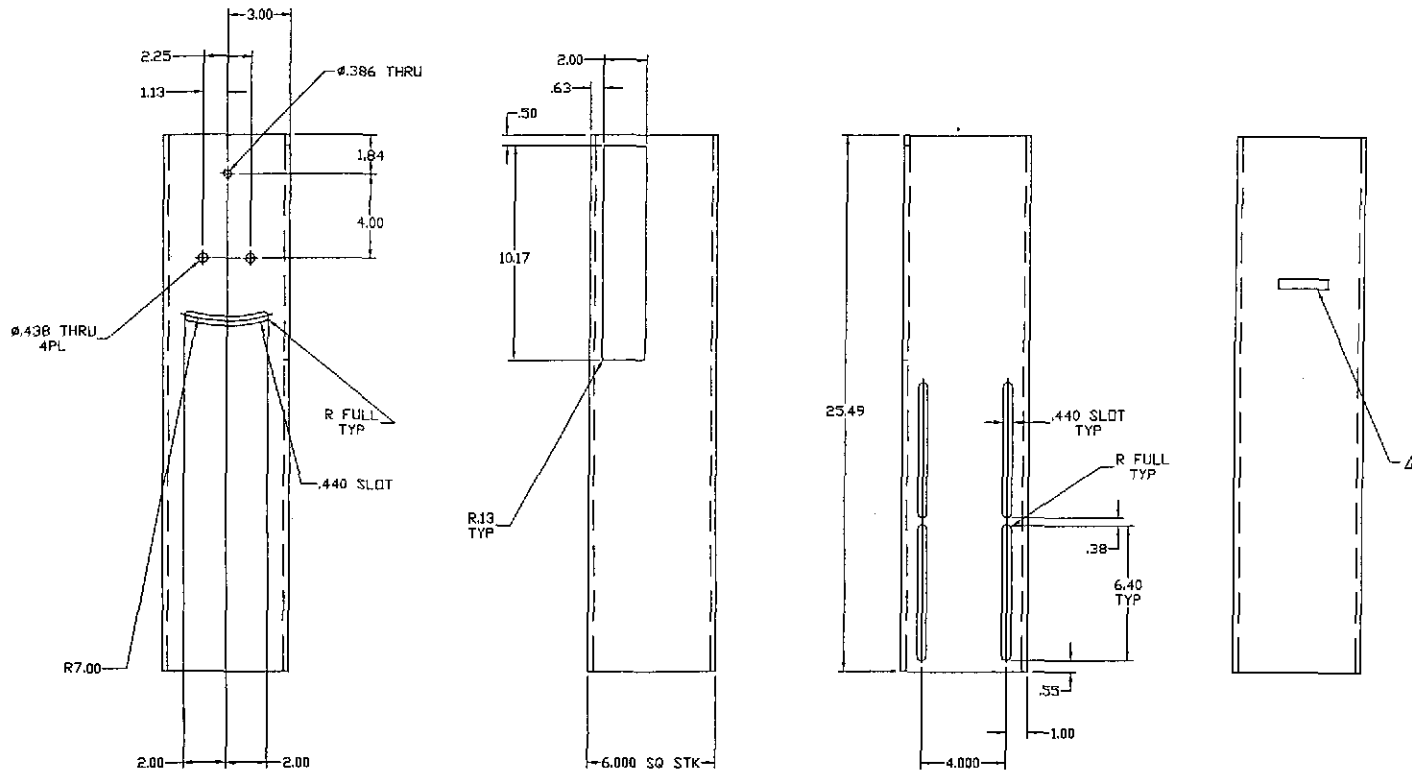
UIC CALIFORNIA INSTITUTE OF TECHNOLOGY  
 MASSACHUSETTS INSTITUTE OF TECHNOLOGY

CAVITY BEAM DUMP  
 HOUSING ASSEMBLY  
 BSC7, 2KFMXX & 2KFMYY  
 BSC8, 2KFMXX & 2KFMYY

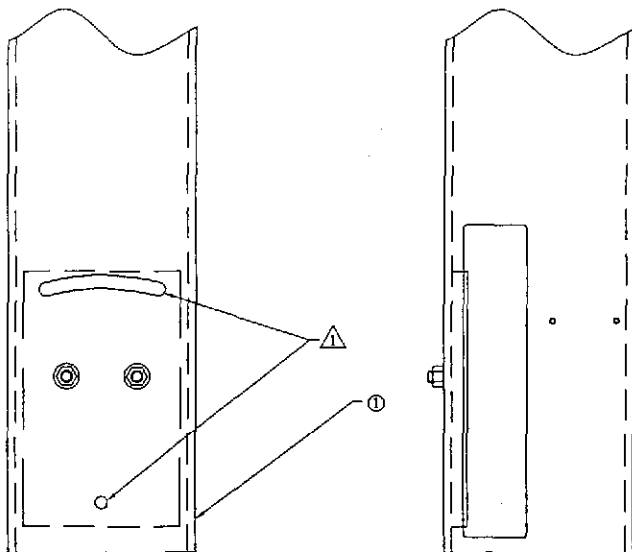
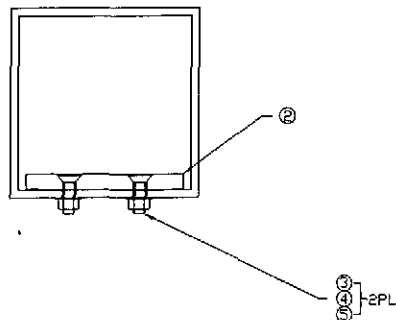
DATE FILED: 9990141-Subag  
 FILED BY: B  
 FILE NO.: D990141-D  
 SHEET: 1 OF 1



NOTES: (UNLESS OTHERWISE SPECIFIED)  
 1. CUTTING FLUIDS TO BE WATER SOLUBLE AND FREE OF SULFUR, CHLORINE, & SILICONE.  
 ⚠ STEEL STAMP OR ENGRAVE THE DRAWING PART NUMBER ON NOTED FACE OF PART FOLLOWED BY \*S/N\*, THEN A THREE DIGIT SERIAL NUMBER. SERIAL NUMBERS TO START AT 001 FOR FIRST PART AND PROCEED IN A CONSECUTIVE MANNER TO A MAXIMUM OF 999, FOR EACH SUCCEEDING PART PRODUCED. USE .613 HIGH CHARACTERS. EXAMPLE: D990252-A S/N 001



UNLESS OTHERWISE SPECIFIED DIMENSIONS ARE IN INCHES		UNLESS OTHERWISE SPECIFIED DIMENSIONS ARE IN INCHES		UNLESS OTHERWISE SPECIFIED DIMENSIONS ARE IN INCHES		UNLESS OTHERWISE SPECIFIED DIMENSIONS ARE IN INCHES		UNLESS OTHERWISE SPECIFIED DIMENSIONS ARE IN INCHES			
TOLERANCES: FRACTIONAL ± ANGULAR ± ANGULAR/ROUND & BEND ± TWO PLACE DECIMAL ±0.01		THREE PLACE DECIMAL ±0.005 FINISHED SURFACE RMS BREAK CORNERS IN QTY: 005-010 REMOVE ALL BURRS		MATERIAL: 5052-T6 ALU TUBING 6" OD, 1/4" WALL		HEAT TREAT: NEXT ASSY: D990403		FINISH:		LIGO CALIFORNIA INSTITUTE OF TECHNOLOGY MIDWINTER INSTITUTE OF TECHNOLOGY	
REV	DESCRIPTION	APP'D	CHECK	DRWN	DATE	SCALE	SHEET	CAVITY BEAM DUMP HOUSING TUBE BSC4, 2KITMYARL, 2KITMYARL, 2KRHR3 BSC2, 4KITMYARL, 4KITMYARL			
C	REV E990244	Conley			6-7-99			D990252-C			
B	REV E990219	Conley			5-25-99			D990252-C			
A	REV E990219	Conley			5-18-99			D990252-C			



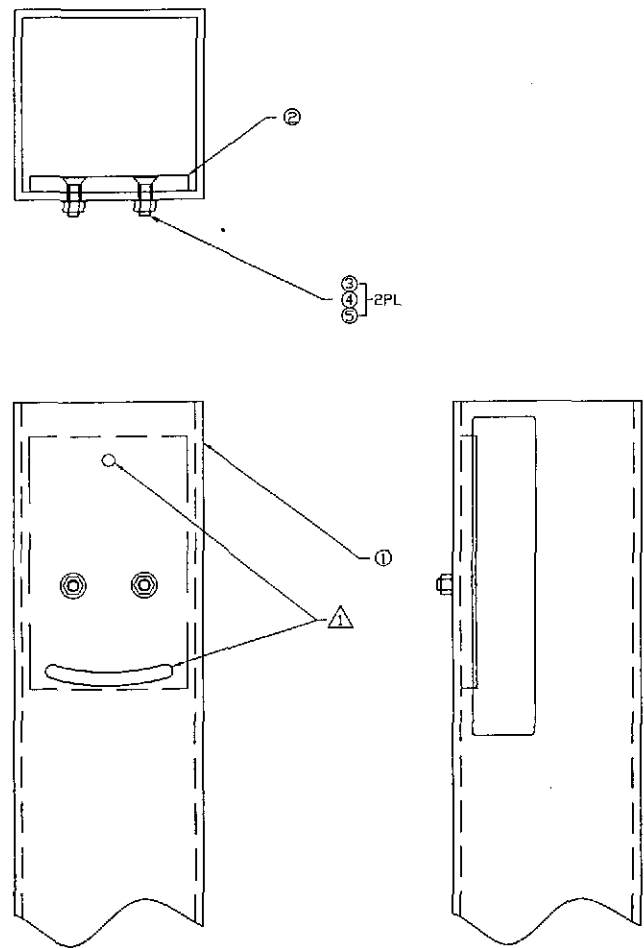
NOTES: UNLESS OTHERWISE SPECIFIED:  
 ⚠️ ALIGN NOTED MATING FEATURES IN ITEMS 1 & 2 AS FOLLOWS:  
 ALIGN HOLES USING A SIZE V (#377) OR V (#385) DRILL ROD OR EQUIVALENT. ROTATE SLOTS INTO ALIGNMENT BY EYE, THEN FASTEN HARDWARE.

REF.	QTY.	PART or DRWG No.	NOMENCLATURE or DESCRIPTION	MATERIAL
5	2	U-C Components WFV-38	.39 ID X .625 OD X .032 THICK FLAT WASHER	18-8 ST STEEL
4	2	McM-Carr 94804A320	3/8-16 HEX NUT	316 ST STEEL
3	2	McM-Carr 90585A626	3/8-16 X 1.25 SOCKETED FLAT HEAD SCREW	316 ST STEEL
2	1	D990140	HOUSING PLATE	-
1	1	D990225	HOUSING TUBE	-

PARTS and MATERIAL LIST

UNLESS OTHERWISE SPECIFIED DIMENSIONS ARE IN INCHES TOLERANCES: FRACTIONAL & ANGULAR ± ANGULAR/ARCH & BEND ± TWO PLACE DECIMAL MATERIAL: _____ HEAT TREAT: _____ FINISH: _____ THREE PLACE DECIMAL FINISHED SURFACE, DIS BREAK CORNERS 1/16" CUT REMOVE ALL BURRS		UIC 6990244 REV _____ DESCRIPTION _____ ISSUE DESCRIPTION _____ APPROV _____ CHECK _____ DEVN _____ DATE _____ SCALE _____ NTS _____ SHEET 1 OF 1		LIGO CALIFORNIA INSTITUTE OF TECHNOLOGY ADVANCED RESEARCH CENTER OF TECHNOLOGY CAVITY BEAM DUMP HOUSING ASSEMBLY BSC7, 4KITMYHR3 & 4KITMYHR4 BSC8, 4KITMYHR3 & 4KITMYHR4 EXP FILE 6-7-99 D990402-Admg B D990402-A	
DRG. NO.	DESCRIPTION	USED ON	NEXT ASSY: D990230	REV	DESCRIPTION

NOTES: (UNLESS OTHERWISE SPECIFIED)  
 ▲ ALIGN NOTED MATING FEATURES IN ITEMS 1 & 2 AS FOLLOWS:  
 ALIGN HOLES USING A SIZE V (#.377) OR V (#.386) DRILL ROD OR EQUIVALENT. ROTATE SLOTS INTO ALIGNMENT BY EYE, THEN FASTEN HARDWARE.



REF.	QTY.	PART or DRWG No.	NOMENCLATURE or DESCRIPTION	MATERIAL
5	2	U-C Components WFV-38	.39 ID X .625 OD X .032 THICK FLAT WASHER	18-8 ST STEEL
4	2	McM-Carr 94804A320	3/8-16 HEX NUT	316 ST STEEL
3	2	McM-Carr 90585A626	3/8-16 X 1.25 SOCKETED FLAT HEAD SCREW	316 ST STEEL
2	1	D950140	HOUSING PLATE	-
1	1	D990252	HOUSING TUBE	-

DRAWING INFORMATION		MATERIALS		REVISIONS		APPROVALS		DATE		FILE	
DRWG. NO.	DESCRIPTION	MATERIAL	HEAT TREAT	REV	DESCRIPTION	APPROV'D	CHECK	DRWN	DATE	FILE	ISSUE
	REFERENCE DRAWINGS			A	REV E990244	Carley			6-7-99	D990403-A	B
		NEXT ASSY: D990230		ISSUE DESCRIPTION						D990403-A	

**LIGO** CALIFORNIA INSTITUTE OF TECHNOLOGY  
 MASSACHUSETTS INSTITUTE OF TECHNOLOGY  
 CAVITY BEAM DUMP HOUSING ASSEMBLY  
 BSC2, 4KITMYARI & 4KITMYARI  
 BSC4, 2KITMYARI, 2KITMYARI,  
 & 2KRM-R3  
 D990403-A  
 B D990403-A  
 1 OF 1