



DOCUMENT CHANGE NOTICE (DCN)

DOCUMENT No. (DOC-REV-GP. ID)	TITLE	NEW REV.
D990094-A	Cavity Beam Dump Assembly	B
D990140-A	Cavity Beam Dump Housing Plate	B
D990141-A	Cavity Beam Dump Housing Assembly	B
D990222-n/a	Cavity Beam Dump Housing Tube, BSC8, 2KBSAR3	A
D990223-n/a	Cavity Beam Dump Housing Tube, BSC8, 2KFMYY	A
D990224-n/a	Cavity Beam Dump Housing Tube, BSC8, 2KFMYY	A
D990225-n/a	Cavity Beam Dump Housing Tube, BSC8, 4KITMYHR3, 4KITMYHR4	A

CHANGE DESCRIPTION (FROM/TO):

D990094: Changed entry in Next Assembly block from D990145 to D990230.

D990140: Added ventilation lands and shortened part length to 8.09" eliminating two mounting holes.

D990141: Revised to show added hardware and changes in assembly parts. Changed entry in Next Assembly block from D990145 to D990230.

D990222 thru D990225: Custom designed housing tubes for each Cavity Beamdump in BSC8. These drawings supersede and replace D990141-A and D990142-A

ACTION: Incorporate change Attach DCN to drawing(s) Other action (specify):

DISPOSITION OF HARDWARE (IDENTIFY SERIAL NUMBERS)

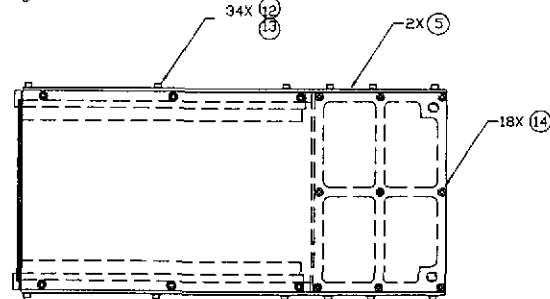
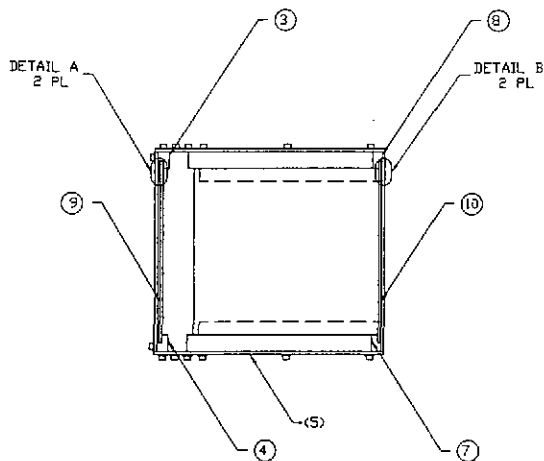
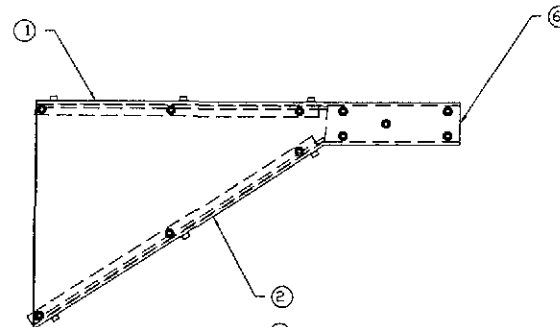
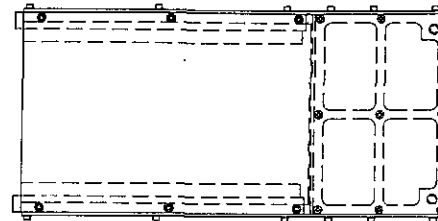
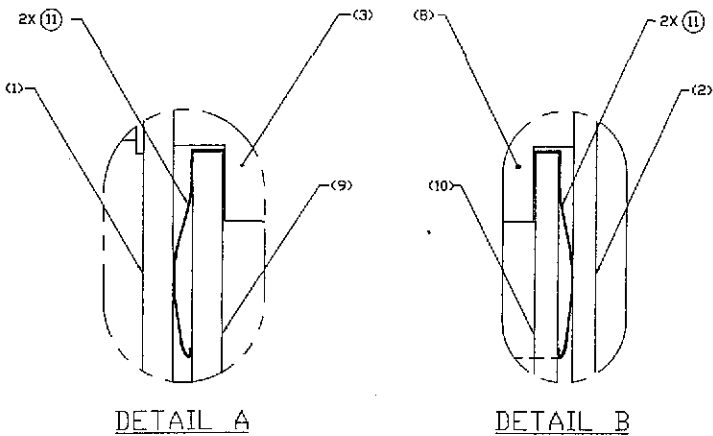
- No hardware affected (record change only)
- List S/Ns which comply already:
- List S/Ns to be reworked or scrapped:
- List S/Ns to be built with this change: D990140: 006 up, D990222 thru D990225: 001
- List S/Ns to be retested per this change:
-
-
-

DCN DISTRIBUTION (X=incl. docs)

Aithouse	Barish	Coles
X Coyne	Lazzarini	Lindquist
Sanders	Shoemaker	Stapfer
Tyler	Weiss	Whitcomb
Camp	x Conley	
x Jones	x Smith	

SAFETY, COST, SCHEDULE, REQUIREMENTS IMPACT? No Yes (if yes, enter Change Request number)

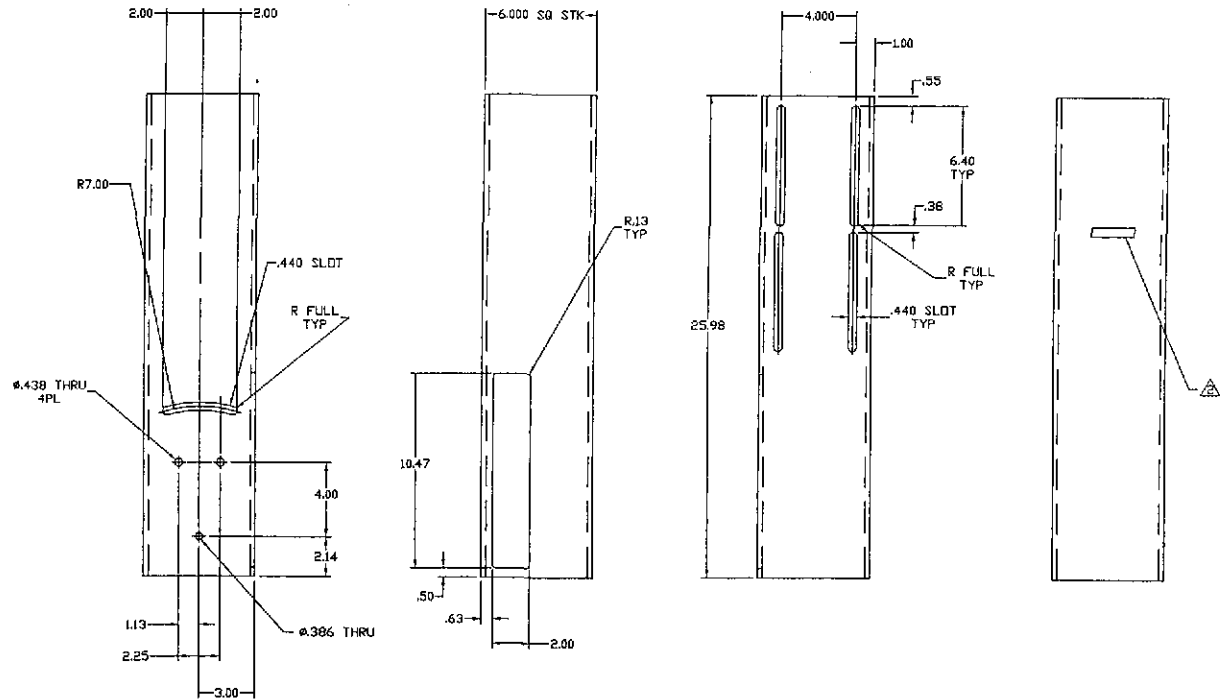
APPROVALS:	DATE	OTHER APPROVALS (specify)	DATE
ORIGINATOR: C. Conley	5-7-99		
TASK LEADER: <i>Michael Smith</i>	6/2/99		
GROUP LEADER: <i>Dominic Coyne</i>	6/3/99		
DCC RELEASE: <i>Anna Kuan</i>	6-23-99		



NOTES: (UNLESS OTHERWISE SPECIFIED)
 SEE SEPARATE MATERIALS LIST LIGO-D990095.

		UNLESS OTHERWISE SPECIFIED DIMENSIONS ARE IN INCHES						LIGO CALIFORNIA INSTITUTE OF TECHNOLOGY MASONIC AVENUE, PASADENA, CALIF. 92372	
		TOLERANCES: FRACTIONAL & ANGULAR & ANGULAR APPROX & BEND & TWO PLACE DECIMAL &	THREE PLACE DECIMAL & FINISHED SURFACE RMS BREAK CORNERS (DR. CUT), REMOVE ALL BURRS				Cavity 3-6-99		ISSUE NO. D990094-11
		MATERIAL:	HEAT TREAT:	FINISH:	REV		APPROV	CHECK	DATE
BVL NO.		DESCRIPTION		NEXT ASSY D990038		DESCRIPTION		ISSUE DESCRIPTION	
REFERENCE DRAWINGS		USED ON:						SCALE HTZ	
								DRAWN BY: D990094-11	
								SHEET 1 OF 1	

NOTES (UNLESS OTHERWISE SPECIFIED)
 1. CUTTING FLUIDS TO BE WATER SOLUBLE AND FREE OF SULFUR, CHLORINE, & SILICONE.
 ⚠ STEEL STAMP OR ENGRAVE THE DRAWING PART NUMBER ON NOTED FACE OF PART FOLLOWED BY "S/N", THEN A THREE DIGIT SERIAL NUMBER. SERIAL NUMBERS TO START AT 001 FOR FIRST PART AND PROCEED IN A CONSECUTIVE MANNER TO A MAXIMUM OF 999. FOR EACH SUCCEEDING PART PRODUCED. USE 013 HIGH CHARACTERS. EXAMPLE: D990222-A S/N 001



		UNLESS OTHERWISE SPECIFIED DIMENSIONS ARE IN INCHES								LIGO CALIFORNIA INSTITUTE OF TECHNOLOGY MASSACHUSETTS INSTITUTE OF TECHNOLOGY	
		TOLERANCES: FRACTIONAL & ANGULAR & ANGULAR APPROX & DIM & TYP PLACE DECIMAL 400		THREE PLACE DECIMAL 4.000 FINISHED SURFACE DIM BREAK CORNERS IN DIM 0.005-0.010 REMOVE ALL BURRS						CAVITY BEAM DUMP HOUSING TUBE, BSCB, 2KBSAR3	
		MATERIAL: 6061-T6 ALU TUBING 6" OD, 1/4" WALL		HEAT TREAT: F100304		A DCN E990222		Corley 5-6-99		JOB FILE: D990222-A.dwg	
DWG. NO.		DESCRIPTION		REV		DESCRIPTION		APPR'S CHECK		SHEET 1 OF 1	
REFERENCE DRAWINGS		USED ON		NEXT ASSY: D990141		ISSUE DESCRIPTION		DATE		PART NO. D990222-A	

