

INITIATOR WKM

DATE 7/14/98

L190-E980641-00-D

ENGINEERING CHANGE REQUEST (ECR)

NEXT ASSEMBLY NO. _____

CUSTOMER DRAWING NO. D972118

DRAWING TITLE L190 BSC CROSSBEAM WELDMENT

REVISION: FROM C TO D



HYTEC
INCORPORATED

DESCRIPTION OF CHANGE (Simple Phrase, Identify Dimensions if Possible):

CHANGE AX Ø .2505 - .2509 THEN ITEM 4 ONLY
TO DRILL SIZE H (.266) HOLE

REASONS FOR CHANGE:

.2509 HOLES LOOSENED TO MATCH PINS IN
CENTERING JIG

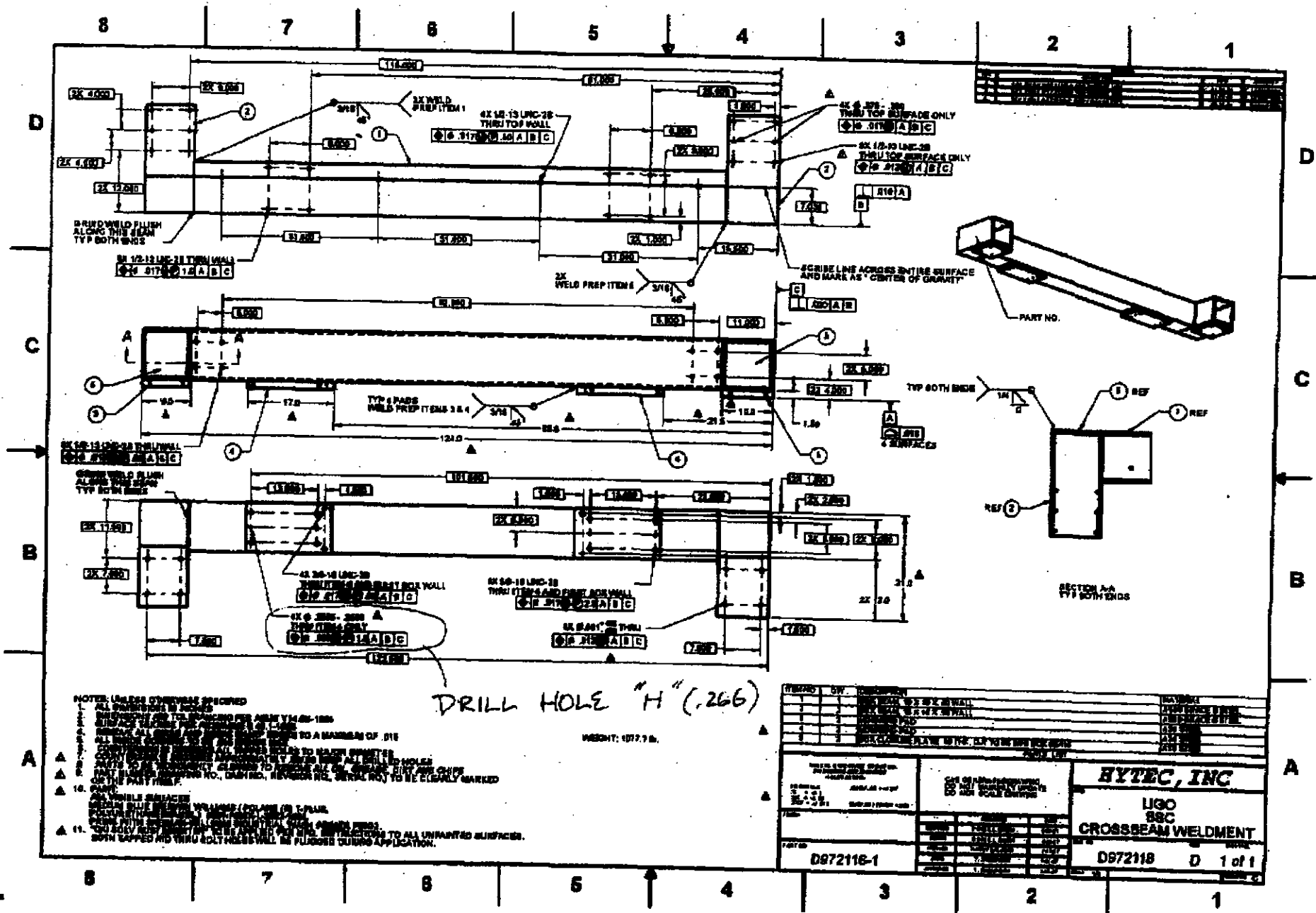
IDENTIFY OTHER PARTS/GROUPS THAT INTERFACE WITH THE ABOVE (Required):

INTERFACE	RESPONSIBLE PARTY	INITIAL

NOTIFY COGNIZANT DESIGNER: WKM

NOTIFY COGNIZANT ENGINEER: Tom

APPROVED: [Signature]



ITEM NO.	QTY	DESCRIPTION	REVISION
1	1	CROSS BEAM WELDMENT	
2	1	CROSS BEAM WELDMENT	
3	1	CROSS BEAM WELDMENT	
4	1	CROSS BEAM WELDMENT	
5	1	CROSS BEAM WELDMENT	
6	1	CROSS BEAM WELDMENT	
7	1	CROSS BEAM WELDMENT	
8	1	CROSS BEAM WELDMENT	
9	1	CROSS BEAM WELDMENT	
10	1	CROSS BEAM WELDMENT	
11	1	CROSS BEAM WELDMENT	

HYTEC, INC	
LIGO SSC	
CROSSEAM WELDMENT	
PART NO. 0972118-1	0972118 D 1 of 1