

INITIATOR 1

DATE 7-24-98

L190-E980592-00-D

ENGINEERING CHANGE REQUEST (ECR)

NEXT ASSEMBLY NO. 972001

CUSTOMER DRAWING NO. 972211

DRAWING TITLE BSC Downtube Weldment

REVISION: FROM F TO G



HYTEC
INCORPORATED

DESCRIPTION OF CHANGE (Simple Phrase, Identify Dimensions if Possible):

- Counter Sink on Optics Surface was $\phi = .39$ change to standard sheet tolerance

REASONS FOR CHANGE:

- Eliminated $1/16$ grooves used for venting

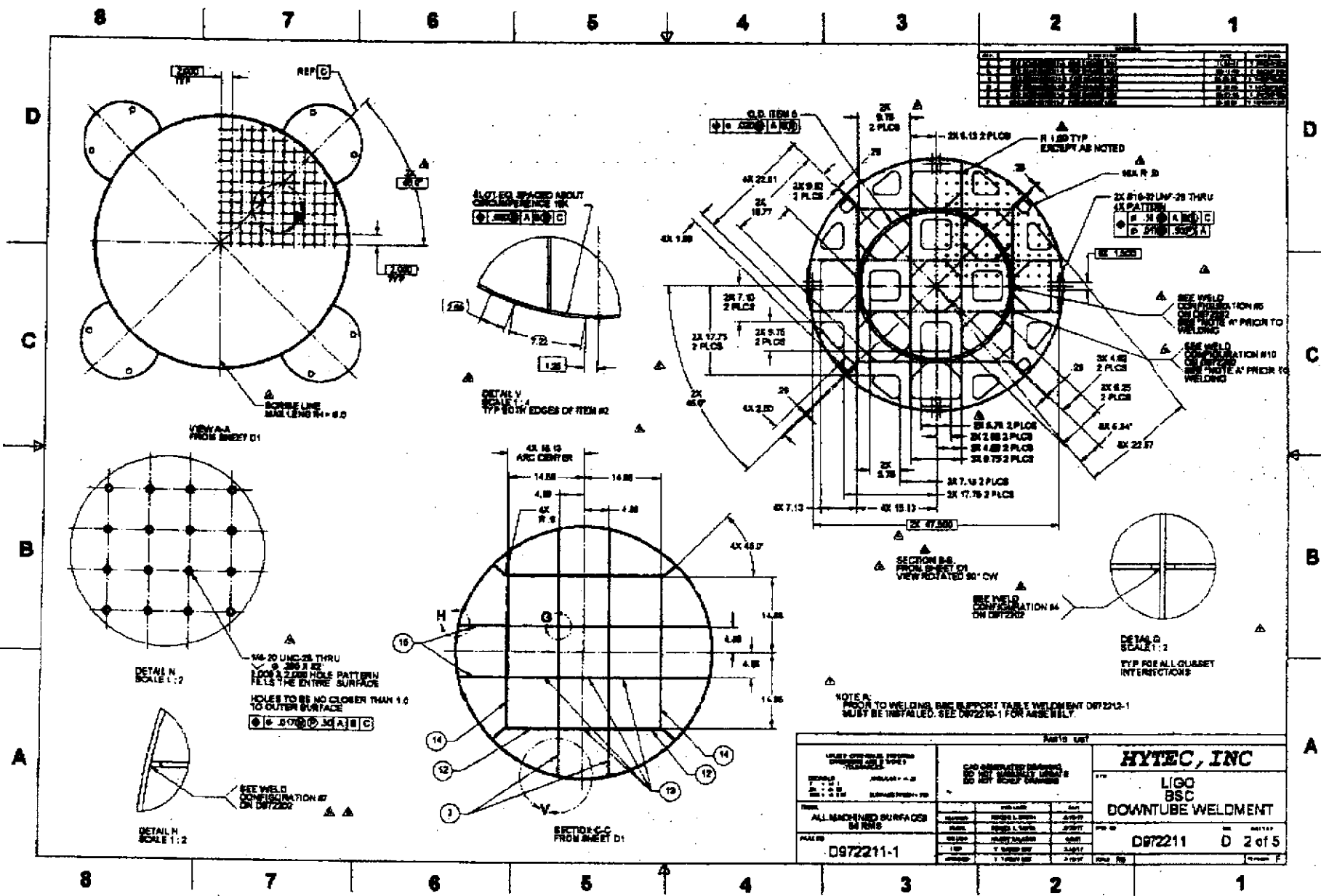
IDENTIFY OTHER PARTS/GROUPS THAT INTERFACE WITH THE ABOVE (Required):

INTERFACE	RESPONSIBLE PARTY	INITIAL

NOTIFY COGNIZANT DESIGNER: Roger

NOTIFY COGNIZANT ENGINEER: Tim

APPROVED: [Signature]



REV	DATE	DESCRIPTION	BY	CHKD
1				
2				
3				
4				
5				
6				
7				
8				
9				
10				

HYTEC, INC LIGC BSC DOWNTUBE WELDMENT		DR72211 D 2 of 5
ALL MACHINED SURFACES SHOWN	DR72211-1	2 of 5