

L190:8980573.00-D

ENGINEERING CHANGE REQUEST (ECR)

NEXT ASSEMBLY NO. _____

CUSTOMER DRAWING NO. D972501

DRAWING TITLE HAM TOP ASSY

REVISION: FROM DI TO A

SHEET 1 OF 2



HYTEC
INCORPORATED

DESCRIPTION OF CHANGE (Simple Phrase, Identify Dimensions if Possible):

① SH 2 ZONE 78A; ADD SPHERICAL WASHERS TO
ITEM 37 QO.

② IN P/L: ADD MCMASTER PN 91944A470 1/2" SPH. WASHERS
QTY: 16

REASONS FOR CHANGE:

① & ② ALLOW ROTATION OF V-BLOCKS

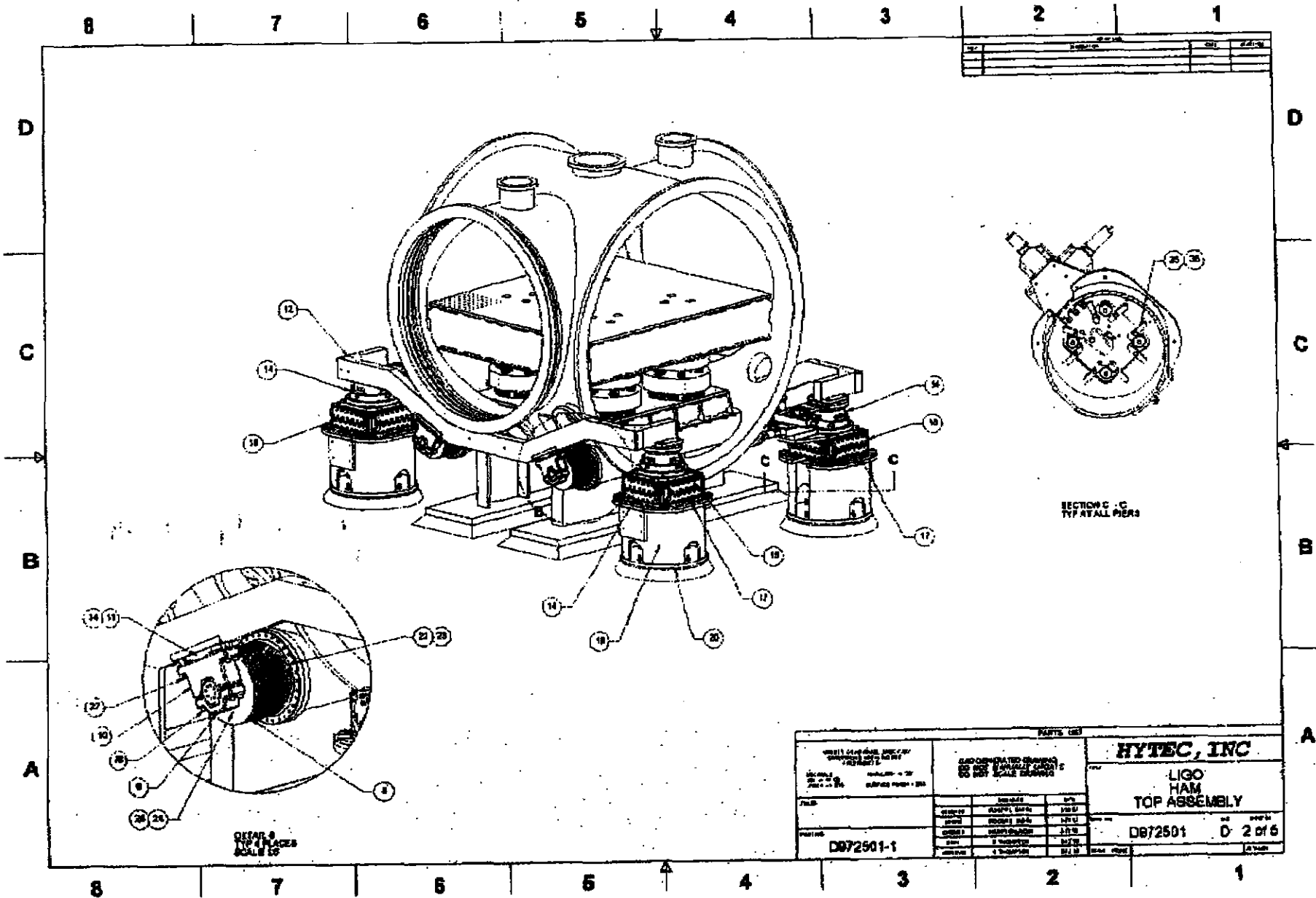
IDENTIFY OTHER PARTS/GROUPS THAT INTERFACE WITH THE ABOVE (Required):

INTERFACE	RESPONSIBLE PARTY	INITIAL
D972701	ROGER	

NOTIFY COGNIZANT DESIGNER: ROGER

NOTIFY COGNIZANT ENGINEER: TIM

APPROVED: _____



SECTION C
TYPICAL PERS.

DETAIL A
TYPICAL PERS.
SCALE 1:1

PARTS LIST		HYTEC, INC	
ALL DIMENSIONS UNLESS OTHERWISE SPECIFIED ARE IN INCHES. DIMENSIONS IN PARENTHESES ARE IN MILLIMETERS. DIMENSIONS IN SQUARE PARENTHESES ARE IN METERS.		LIGO HAM TOP ASSEMBLY	
PART NO. D872501-1	QUANTITY 1	PART NO. D872501	QUANTITY 2 of 6