



# DOCUMENT CHANGE NOTICE (DCN)

DOCUMENT No. (DOC-REV-GP. ID)	TITLE	NEW REV.
D980237-N/A-D	Stack Clamp Components	A

**CHANGE DESCRIPTION (FROM/TO):** New release: these parts are used to locate the ribbon cables (in pairs) on the support table, leg elements, and the back side of the optics table, for both HAM and BSC chambers.

**REASON FOR CHANGE:** N/A

**ACTION:**  Incorporate change  Attach DCN to drawing(s)  Other action (specify): Info only; new drawing

DISPOSITION OF HARDWARE (IDENTIFY SERIAL NUMBERS)	DCN DISTRIBUTION (X=incl. docs)
<input checked="" type="checkbox"/> No hardware affected (record change only)	Althouse Barish Coles x Coyne Lazzarini Lindquist Raab Sanders Shoemaker Stapfer Tyler Weiss Whitcomb Zydowicz
<input type="checkbox"/> List S/Ns which comply already:	x Bork x Zucker
<input type="checkbox"/> List S/Ns to be reworked or scrapped:	x Jones x Savage
<input type="checkbox"/> List S/Ns to be built with this change:	x Hazel x Radkins
<input type="checkbox"/> List S/Ns to be retested per this change:	
<input type="checkbox"/>	
<input type="checkbox"/>	
<input type="checkbox"/>	

**SAFETY, COST, SCHEDULE, REQUIREMENTS IMPACT?**  No  Yes (If yes, enter Change Request number )

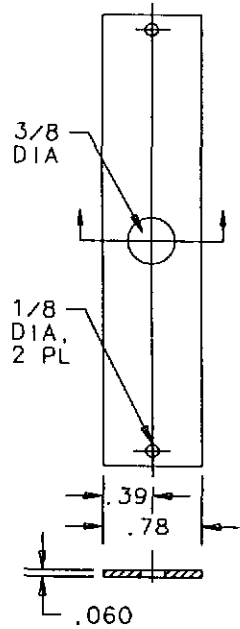
APPROVALS:	DATE	OTHER APPROVALS (specify)	DATE
ORIGINATOR: L. Jones	9/8/98		
TASK LEADER: <i>D. Coyne</i>	9/9/98		
GROUP LEADER: <i>[Signature]</i>			
DCC RELEASE: <i>[Signature]</i>	9/15/98		

NOTES: (UNLESS OTHERWISE SPECIFIED)

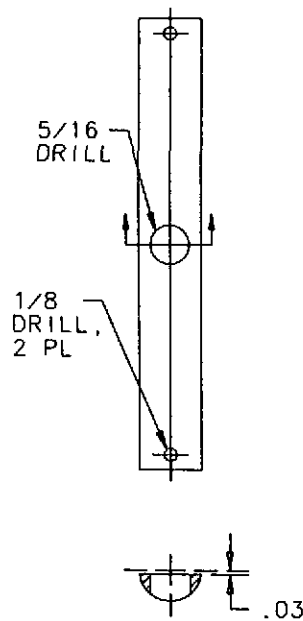
1. BREAK ALL SHARP EDGES.

2-NOTES

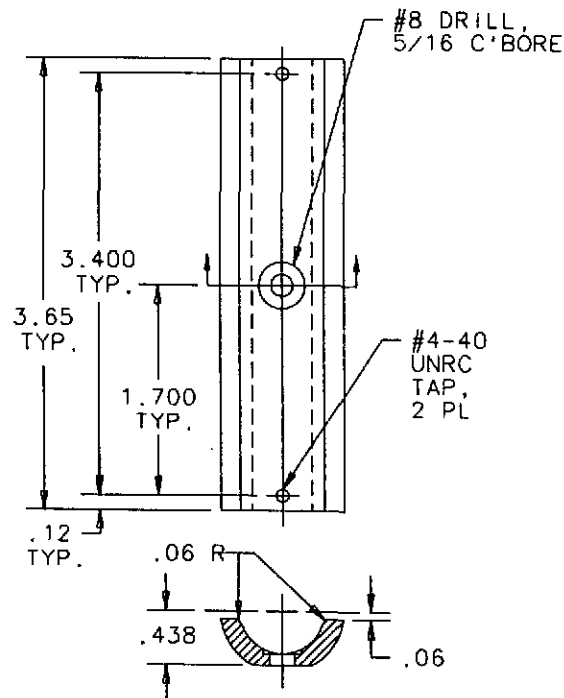
REV	DATE	DRAWN BY	CHECKED	DATE	REV/DESCRIPTION
A	8/3/98	L. Jones			E980208-A-D/INITIAL RELEASE



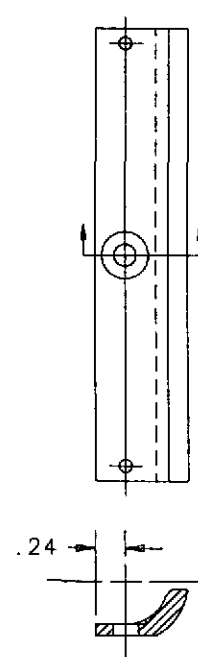
-1 LINER: MAKE FROM FLOUREL ELASTOMER PER LIGO SPEC. E970130



-2 BAR: MAKE FROM 0.50" OD ROD, 6061-T6 ALUMINUM



-3 BASE: MAKE FROM 1.000" OD TUBING X 0.156" WALL, 2024-T3 ALUMINUM



-4 HALF BASE: MAKE FROM BASE

3-FRONT

DATE	DATE	TITLE
L. JONES	8/3/98	STACK CLAMP COMPONENTS
CHKD		Use CAD file: D980237_A.dwg
ENGR		dcc file: D980237-A.pdf
APPR		
UNLESS OTHERWISE SPECIFIED:		
DIMENSION UNITS ARE (inch/mm)		
TOLERANCES ARE:		
H. HOLE: ± 0.010		
H. SH: ± 0.030		
ANGLES: 10:5		
SCALE: 1/1	SHEET	SHEET
1/1	B	D980237-A-D
		1 of 2