

Title: SPECIFICATION FOR BOOSTER PUMP SKID LIGO VACUUM EQUIPMENT

SPECIFICATION FOR BOOSTER PUMP SKID
FOR LIGO VACUUM EQUIPMENT

Hanford, Washington
and
Livingston, Louisiana

PROJECT ENGINEER

S. Metew

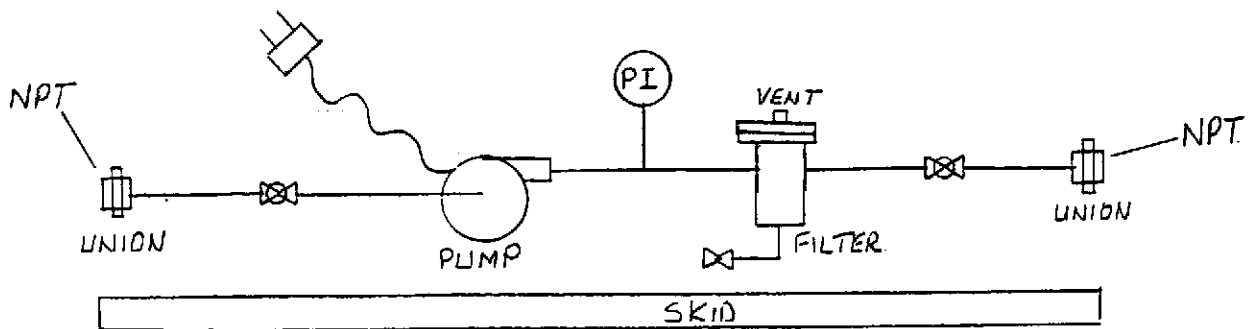
PROJECT MANAGER

Paul Bayly

OCT 03 1997

			INITIAL RELEASE
Φ	<i>Sm</i> 10/1/97	<i>ASB</i> 10/1/97	Released per dec 0553
REV LTR	BY-DATE	APPD. DATE	DESCRIPTION OF CHANGE
PROCESS SYSTEMS INTERNATIONAL, INC.			SPECIFICATION
INITIAL APPROVALS	PREPARED	DATE	Approved DATE
	<i>Sm</i>	10/1/97	
			Number: A V049-2-197 LIGO-E970176-00-V ⁰
			Rev.

LIGO PROJECT V59049						
8/22/1997 REV. FOR PURCHASE 10/1/97						
S.MOTEW						
BOOSTER PUMP SKID						
PERFORMANCE:						
FLUID	TEMP	FLOWRATE	PUMP HEAD	FILTER	FILTER DP	QUAN.
	F	GPM	FT	MICRON	PSI	
50/50 ETHYLENE	45	4	80	20	10 MAX	4
GLYCOL	PSI PART No. V0492197 P1					
50/50 ETHYLENE	45	12	80	20	10 MAX	1
GLYCOL	PSI PART No. V0492197 P2					
MATERIALS:						
PUMP: GOULDS MODEL 3642 , 1 H.P., 115/230 VOLT, ODP WITH OVERLOAD AND AUTO RESET						
PIPING/VALVES: 316 SSTL						
FILTER: 316 SSTL						
ACCESSORIES:						
DISCHARGE PRESS. GAUGE 316SSTL						
SERVICE VALVES :BALL , 316 SSTL						
COMMON BASE WITH PUMP, FILTER, VALVES, PIPING, PRESS. GAUGE						
POWER SUPPLY CORD WITH TWIST LOCK TYPE PLUG						
POWER AVAILABLE: 120V , SINGLE PHASE, 60 HZ						
DOCUMENTATION:						
OPERATING / SERVICE MANUAL						
OUTLINE DWG. FOR APPROVAL , INCL. OVERALL DIMS., TERMINAL PTS., WT., LIFTING AND HANDLING INFO.						



FLOW SCHEMATIC

NOTE: SKID FOOTPRINT NOT TO EXCEED 18" X 36"

A V049-2-197 ϕ

PG. 2 OF 2