

LIGO PROCESS TRAVELER

DCC Number: E050120-00-X

Date Prepared: 5/12/05

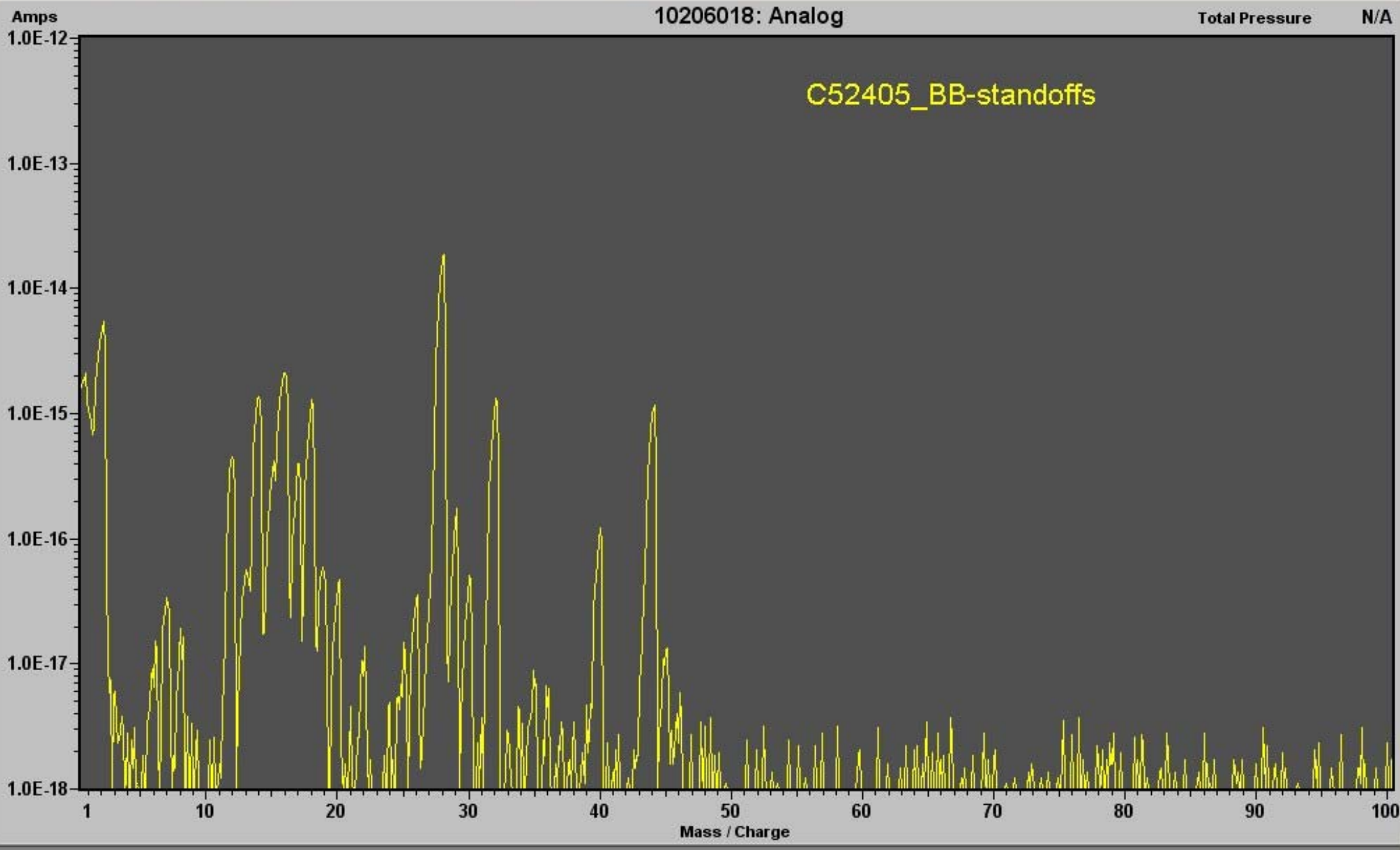
Originator	Cognizant Engineer	Phone	Account Number
Betsy Bland	Janeen Romie	CIT x8445	

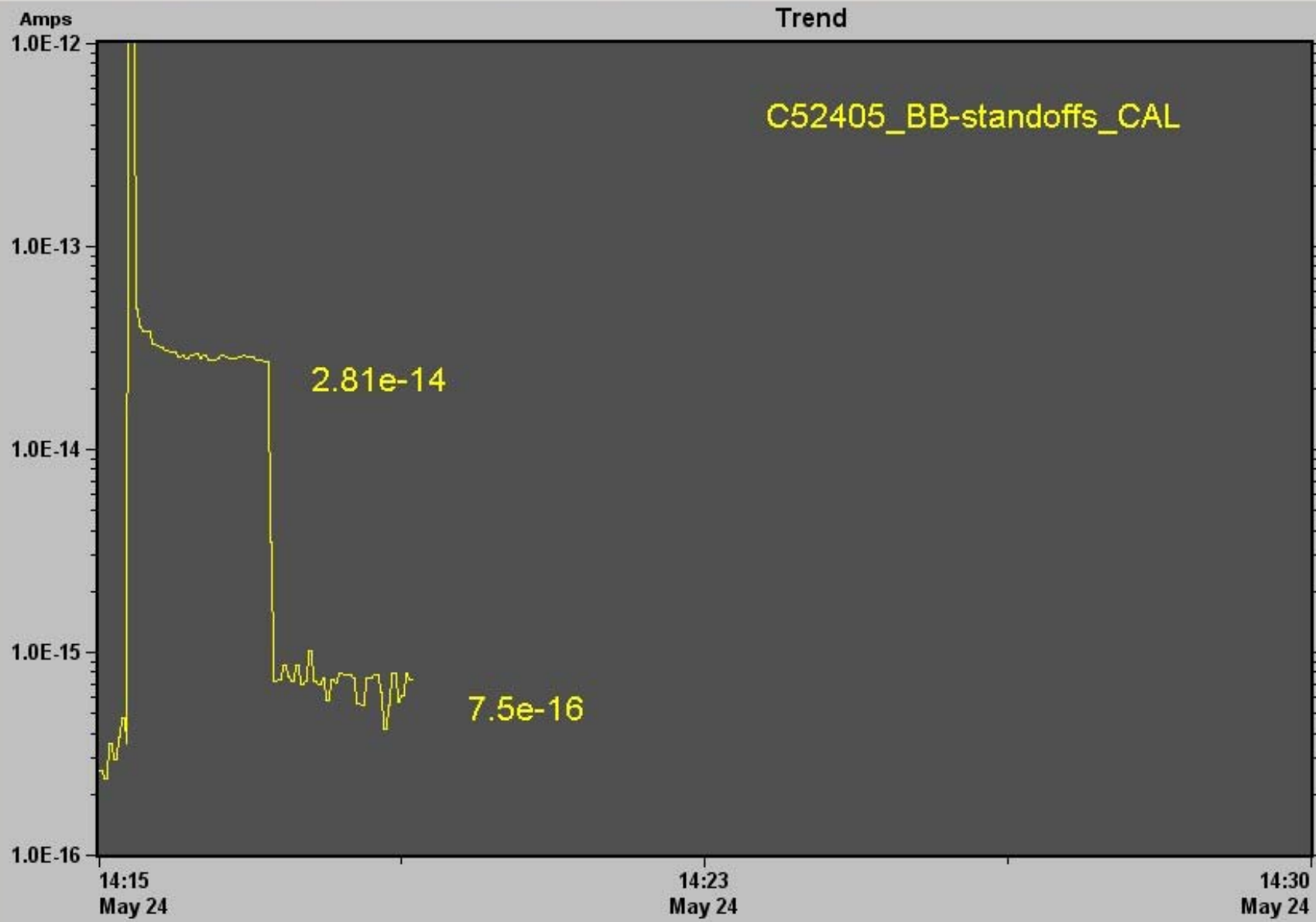
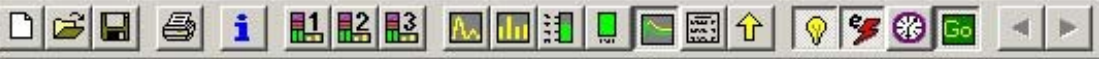
DWG/Part Number	REV	Part Description	Serial Number	QTY
		Spare LOS Quartz Wire Standoffs		25
Used In (next higher assembly):		COS Faraday Isolator Assembly - original traveler closed E990326-02-X		
Vendor Name			PO/Contract Number	

Data Package, receiving, and inspection remarks:

Inspection Required? Y/N	Visual Damage? Y/N	Comments	Name	Date Complete
Y	N		Bland	5/12/05

Line #	Operation	Start Date	Work Area	Instructions/Notes	Name	Date Complete
1	^{Ship to} Receive from CIT	2/05 5/18/05	LHO CIT		(BB)	2/5 5/18/05
2	Clean		LHO CIT	As per cleaning spec. E960022 for "Ceramics and Glasses" page 17 (See attached).	R Taylor	5-20-05
3	Vacuum Bake		LHO CIT	As per cleaning spec. E960022 for "Ceramics and Glasses" page 17 (See attached). (120 deg C. for 48 hours)	R Taylor	5-24-05
4	VBO Scan		LHO CIT	Scan # B52405-BB		
5	Bag and Tag		LHO CIT	Return to Betsy Bland		
6				LIGO standard Obs. Rt. 10, Milemarker 2 Richland, WA 99352		





10206018: Argon 7.14E-16



Tabular 2

10206018: Argon 40	7.1400E-19 Amps
10206018: Argon 40	4.76E-19 Amps
10206018: 41	4.76E-19 Amps
10206018: 43	1.79E-19 Amps
10206018: 53	6.55E-19 Amps
10206018: 55	0.00 Amps
10206018: 57	2.98E-19 Amps

C52405_BB-standoffs_TAB

Pressure Contribution from Flag Hydrocarbons

40M Lab RGA Scan Results

Job # B52405_BE Description: Quartz Standoffs
Oven Used: **B**

Date: 5/24/2005

AMU 41	4.76E-19 amps	from RGA scan listing
AMU 43	1.79E-19 amps	from RGA scan listing
AMU 53	6.55E-19 amps	from RGA scan listing
AMU 55	0.00E+00 amps	from RGA scan listing
AMU 57	2.98E-19 amps	from RGA scan listing
Sum Flag H/C AMUs	1.61E-18 amps	

Calib leak rate 2.00E-08 torr l/s (Argon)

AMU 40 (w/leak open) 2.81E-14 amps

AMU 40 (background) 7.50E-16 amps

Calib leak contributes 2.74E-14 amps = (w/leak open) - (background)

Flag H/C Outgassing 1.176E-12 torr l/s = (Sum Flag H/C AMUs) x (Calib leak rate)/(Calib leak contrib.)

Test item surf area cm²

Normalized outgassing #DIV/0! torr l/s-cm² = Flag H/C Outgassing/Test item surf area

Full description: 25 Quartz Standoffs

Pre-scan bake: 120C for 48 hrs.