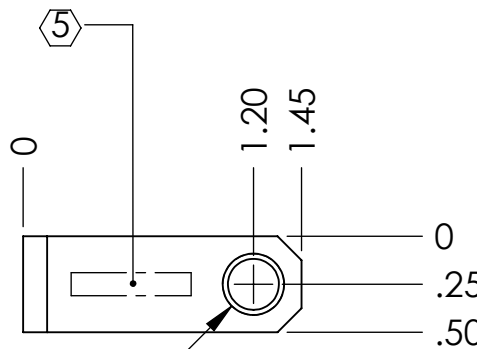
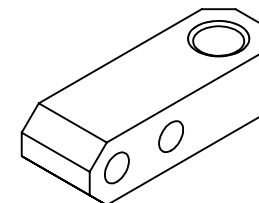


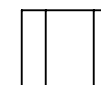
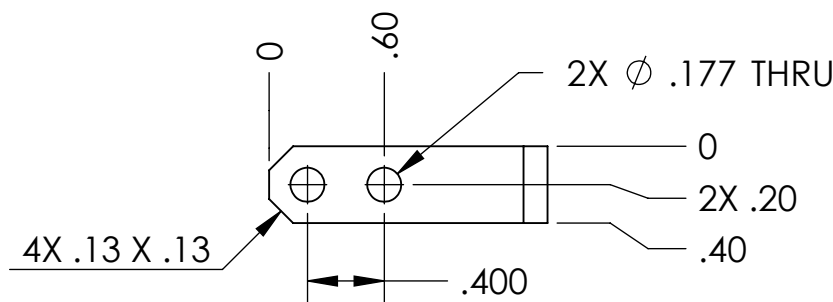
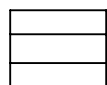
NOTES CONTINUED:

- 5. SCRIBE, ENGRAVE, OR MECHANICALLY STAMP (NO INKS OR DYES) DRAWING PART NUMBER, REVISION (AND VARIANT OR "TYPE" IF APPLICABLE) ON NOTED SURFACE OF PART FOLLOWED ON THE NEXT LINE WITH A THREE DIGIT SERIAL NUMBER. SERIAL NUMBERS START AT 001 FOR THE FIRST ARTICLE AND PROCEED CONSECUTIVELY. USE MINIMUM 0.12" HIGH CHARACTERS, UNLESS THE SIZE OF THE PART DICTATES SMALLER CHARACTERS. A VIBRATORY TOOL MAY BE USED.
EXAMPLE: DXXXXXX-VY, TYPE-XX, S/N XXX
- 6. MACHINE ALL SURFACES TO REMOVE OXIDES AND MILL FINISH. USE OF ABRASIVE REMOVAL TECHNIQUES IS NOT ALLOWED.
- 7. ALL PARTS SHALL BE MANUFACTURED IN ACCORDANCE WITH LIGO SPECIFICATION E0900364.
- 8. ALL HELICOIL HOLES TO BE PREPARED IN ACCORDANCE WITH EMHART HELICOIL PRODUCT CATALOG, HC2000, REV. 4.
- 9. ALL HELICOILS TO BE INSTALLED BY LIGO PERSONNEL AFTER DELIVERY, CLEANING AND BAKING OF FINISHED PARTS.

REV.	DATE	DCN #	DRAWING TREE #
v1	10 AUG 2010	E1000301	E080191
-	-	-	-
-	-	-	-



DRILL AND TAP THRU FOR
1/4-20 UNC-2B X 1.5 DIA
EMHART HELICOIL
(P/N 1185-4EN375)



NOTES AND TOLERANCES: (UNLESS OTHERWISE SPECIFIED)

DIMENSIONS ARE IN INCHES

TOLERANCES:
.XX ± .01
.XXX ± .005

ANGULAR ± 0.5°

- 1. INTERPRET DRAWING PER ASME Y14.5-1994.
- 2. REMOVE ALL SHARP EDGES, R.02 MIN.
- 3. DO NOT SCALE FROM DRAWING.
- 4. ALL MACHINING FLUIDS MUST BE FULLY SYNTHETIC, FULLY WATER SOLUBLE AND FREE OF SULFUR, SILICONE, AND CHLORINE.

MATERIAL 6061-T6 Al FINISH 63 μinch

LIGO CALIFORNIA INSTITUTE OF TECHNOLOGY
MASSACHUSETTS INSTITUTE OF TECHNOLOGY

SYSTEM ADVANCED LIGO SUB-SYSTEM SUS
NEXT ASSY EARTHQUAKE STOP BRACKET ASSY, BOTTOM MASS, LOWER

PART NAME EARTHQUAKE STOP BRACKET SIDE, BOTTOM MASS, LOWER

DESIGNER	D. BRIDGES	25 OCT 2010	SIZE	DWG. NO.	REV.
DRAFTER	D. BRIDGES	27 OCT 2010	A	D1002824	v1
CHECKER	B. MOORE	28 OCT 2010	SCALE: 1:1	PROJECTION:	SHEET 1 OF 1
APPROVAL					