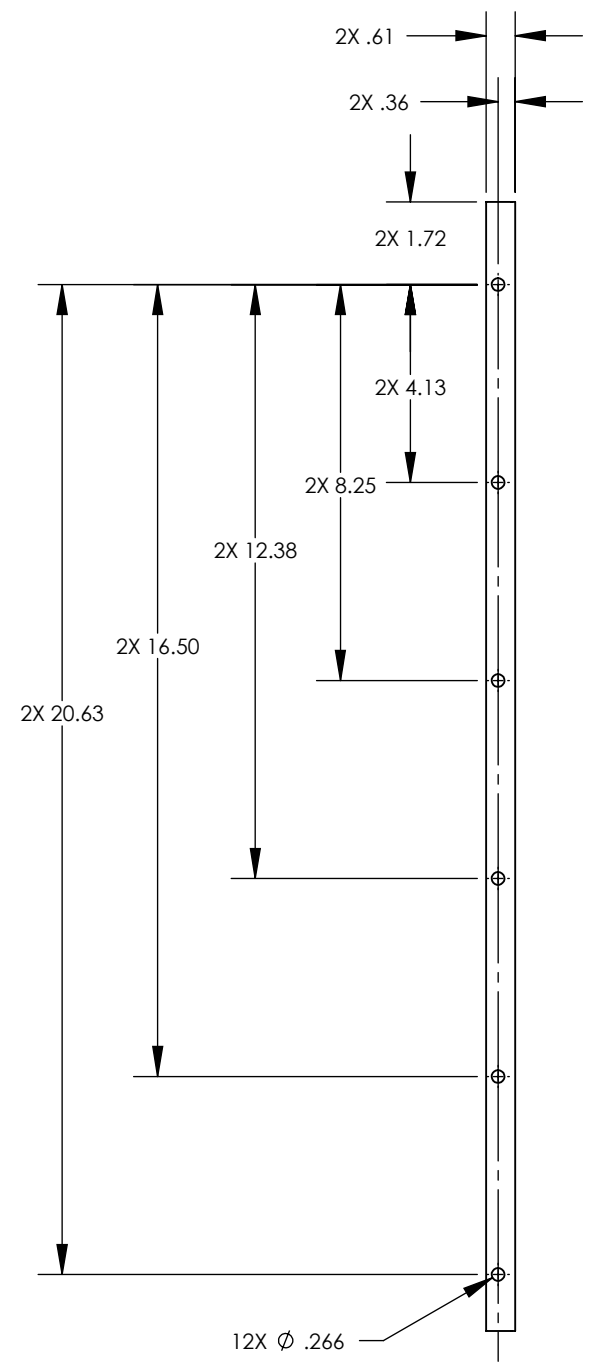
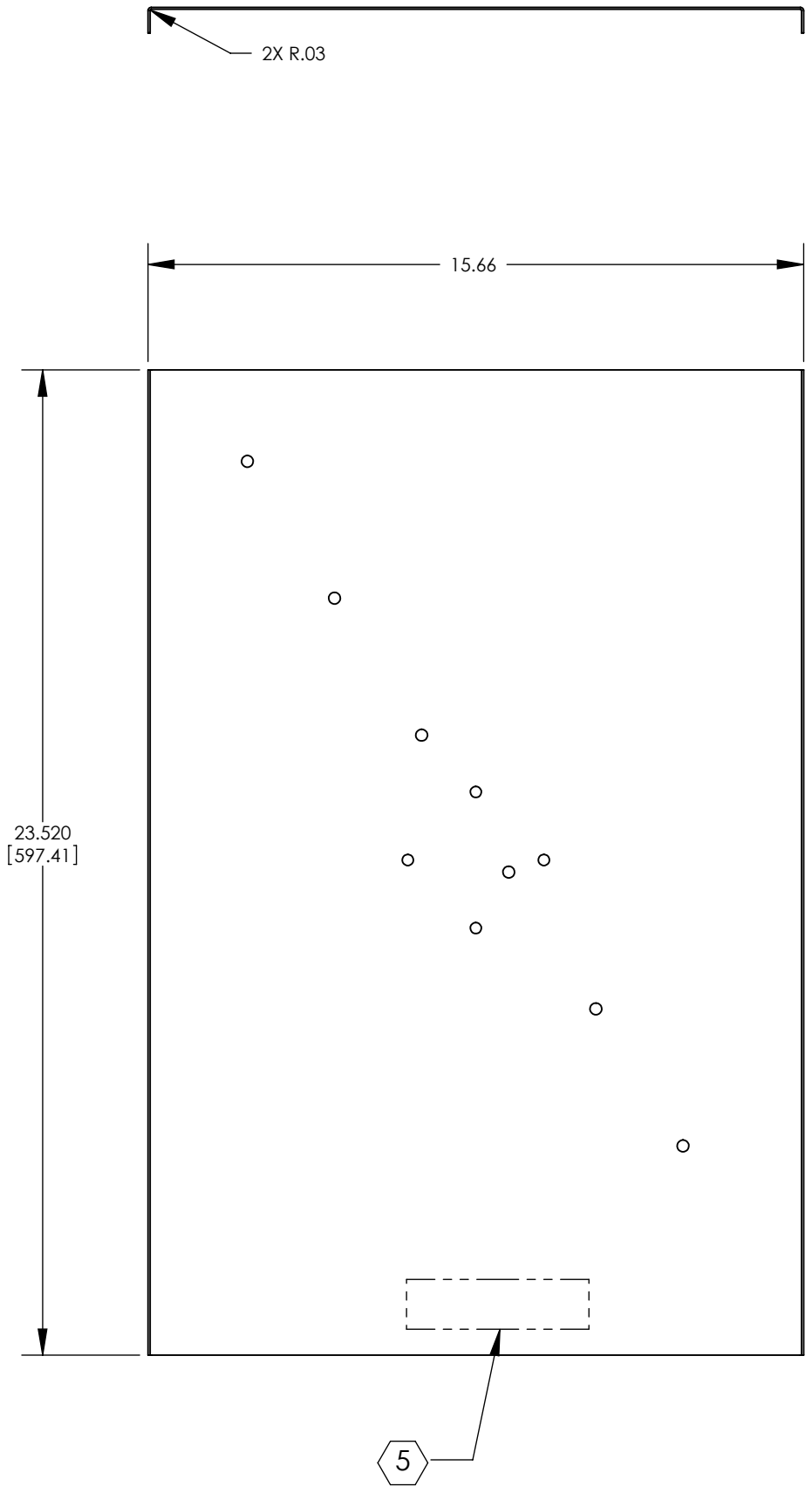


D1002766_AdlIGO_AOS_ITM Elliptical Baffle Lower Cap Skin, PART PDM REV: X-014, DRAWING PDM REV: X-014

- NOTES CONTINUED:**
- 5. MACHINE PART NUMBER, REVISION, SERIAL NUMBER, .020 DEEP WITH MINIMUM CHARACTER HEIGHT .156 APPROXIMATELY WHERE SHOWN. SERIAL NUMBER WILL START AT 001 AND PROCEED CONSECUTIVELY. EXAMPLE: D100XXXX-V1 S/N 001
 - 6. ALL PARTS SHALL BE MANUFACTURED IN ACCORDANCE WITH LIGO SPECIFICATION E0900364.
 - 7. ALL MATERIAL IS TO BE VIRGIN MATERIAL (i.e. NO WELD REPAIRS OR PLUGS) UNLESS APPROVED IN ADVANCE IN WRITING BY LIGO, REFER TO LIGO-E0900364.
 - 8. NO REPAIRS SHALL BE MADE UNLESS APPROVED IN ADVANCE, AND IN WRITING, BY LIGO LABORATORY. IN GENERAL WELD REPAIRS AND PRESS FIT INSERT REPAIRS ARE NEVER ACCEPTABLE; THE MATERIAL SHOULD BE MADE WITH VIRGIN MATERIAL. SPECIAL CIRCUMSTANCES CAN BE REVIEWED IF / WHEN BROUGHT TO THE ATTENTION OF LIGO CONTRACTING OFFICER'S REPRESENTATIVE (COTR) THROUGH A MATERIAL REVIEW BOARD (MRB) PROCESS, REFER TO LIGO-E0900364.
 - 9. SURFACE FINISH TO BE AS-PROCESSED FROM MILL/SUPPLIER, FREE FROM SCRATCHES & GOUGES.
 - 10. PART WILL BE PORCELAIN COATED AFTER FABRICATION. ALL MOUNTING HOLES WILL BE MASKED ($\varnothing 0.63$) PRIOR TO PORCELAIN COATING PER LIGO SPEC E1000083-V4.

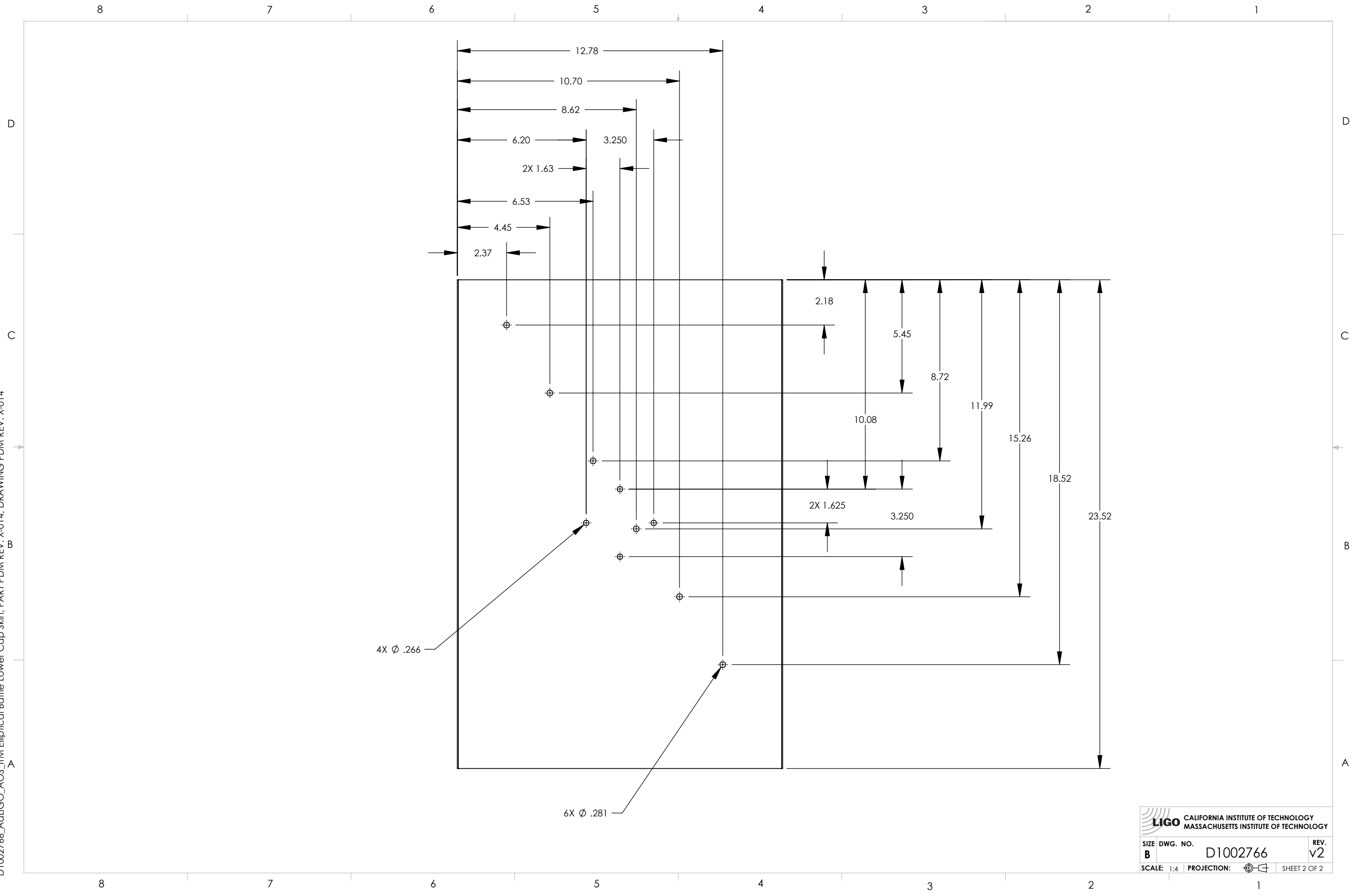
REV.	DATE	DCN #	DRAWING TREE #
v1	18 NOV 2010	E1000736-v1	-
v2	11 DEC 2010	E1000736-v2	-
-	-	-	-


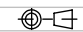


NOTES AND TOLERANCES: (UNLESS OTHERWISE SPECIFIED)	
DIMENSIONS ARE IN	
TOLERANCES:	
.XX $\pm .02$	
.XXX $\pm .010$	
ANGULAR $\pm .5^\circ$	
1. INTERPRET DRAWING PER ASME Y14.5-1994.	
2. REMOVE ALL SHARP EDGES, R.02 MIN.	
3. DO NOT SCALE FROM DRAWING.	
4. ALL MACHINING FLUIDS MUST BE FULLY SYNTHETIC, FULLY WATER SOLUBLE AND FREE OF SULFUR, SILICONE, AND CHLORINE.	
MATERIAL	FINISH
A424 TYPE I, 18GA, SSTL	See Note 7

CALIFORNIA INSTITUTE OF TECHNOLOGY MASSACHUSETTS INSTITUTE OF TECHNOLOGY		PART NAME		ITM Elliptical Baffle Lower Cap Skin	
SYSTEM	ADVANCED LIGO	SUB-SYSTEM	AOS	DESIGNER	M.Ruiz 06 Dec 2010
NEXT ASSY	D1002750	CHECKER	M.RUIZ 09 NOV 2010	SIZE DWG. NO.	B D1002766
				APPROVAL	
				SCALE:	1:4
				PROJECTION:	
				SHEET	1 OF 2
				REV.	v2

D1002766_AdLIGO_AOS_ITM Elliptical Baffle Lower Cap Skin, PART PDM REV: X-014, DRAWING PDM REV: X-014



 CALIFORNIA INSTITUTE OF TECHNOLOGY MASSACHUSETTS INSTITUTE OF TECHNOLOGY		
SIZE B	DWG. NO. D1002766	REV. v2
SCALE: 1:4 PROJECTION: 		SHEET 2 OF 2