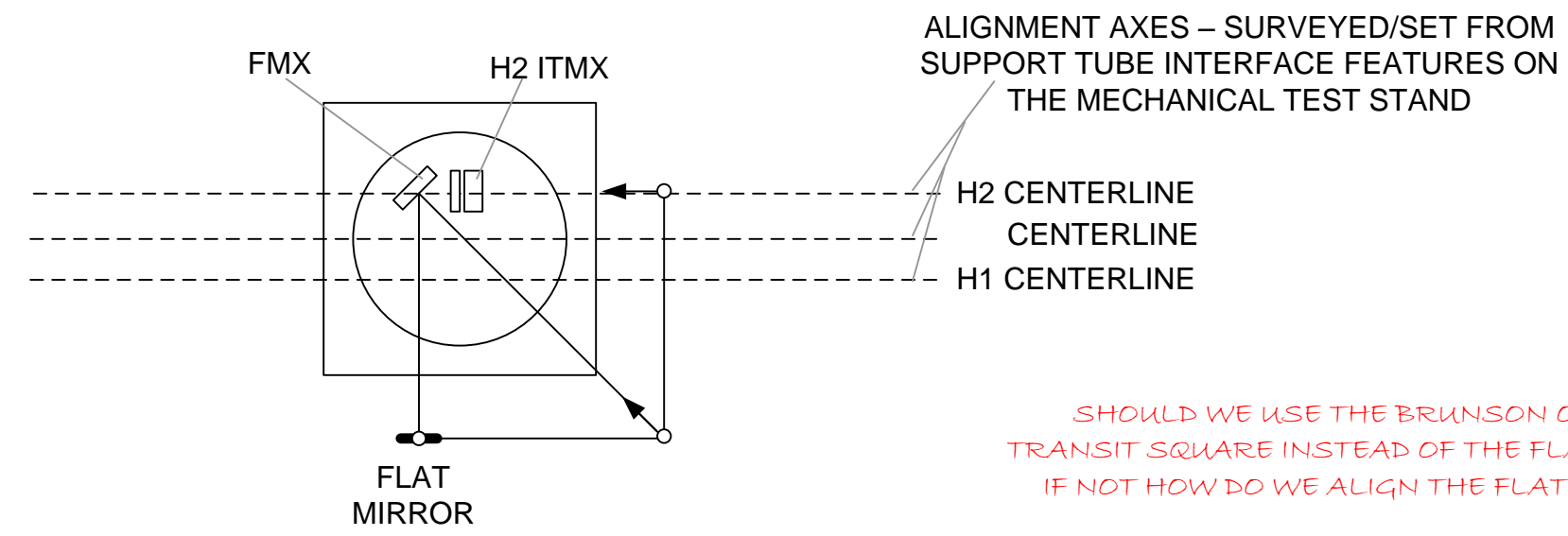
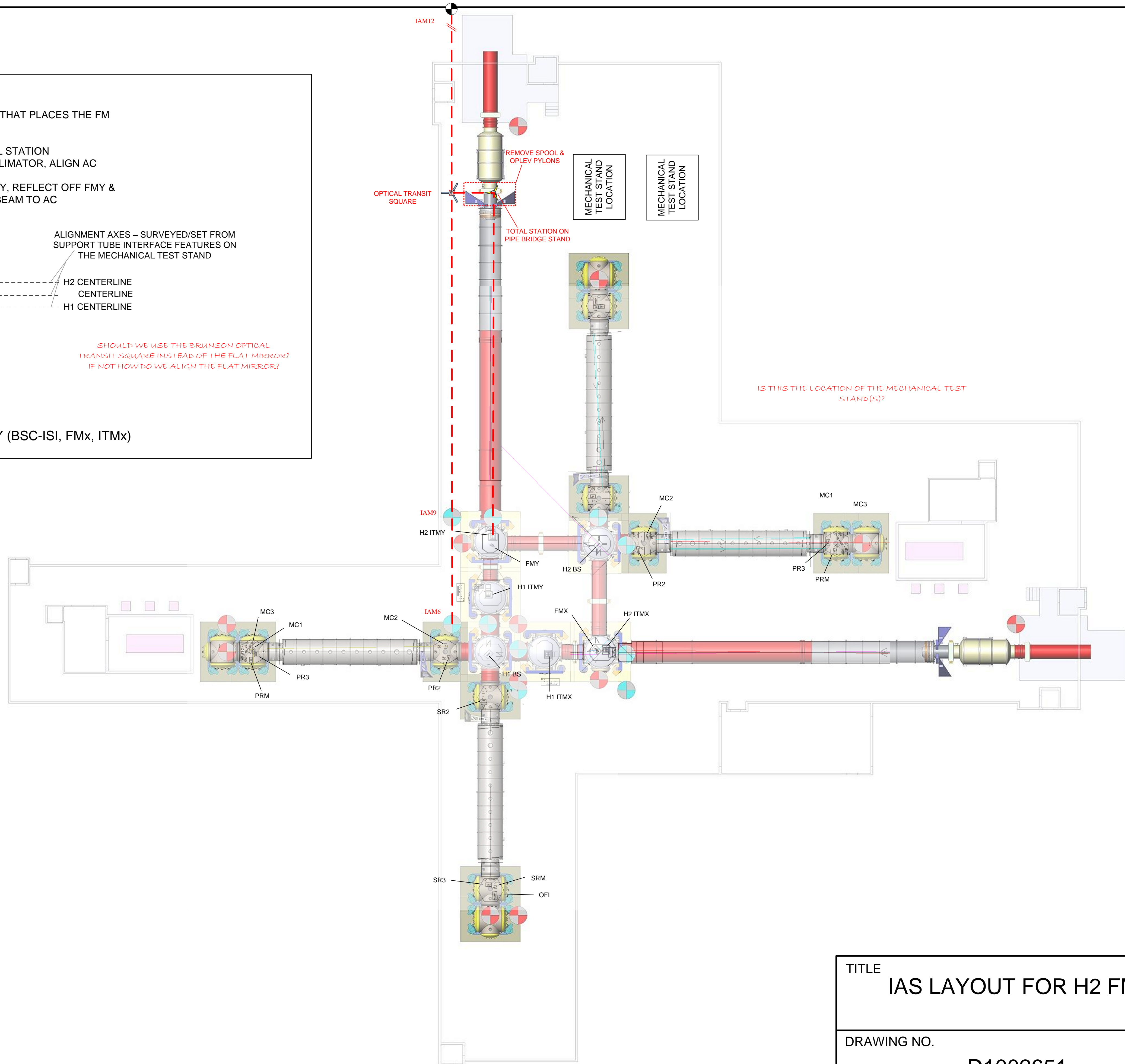


- 0) USE A MECHANICAL TEMPLATE THAT PLACES THE FM RELATIVE TO THE ITM
- 1) SET OPTICAL FLAT
- 2) SET HR FACE OF ITMY W/ TOTAL STATION
- 3) SWITCH TO IR LASER AUTOCOLLIMATOR, ALIGN AC FROM RETRO OFF ITM HR FACE
- 4) PROPAGATE IR BEAM THRU ITMY, REFLECT OFF FMY & FLAT -- ADJUST FMY TO RETURN BEAM TO AC



MECHANICAL TEST STAND WITH "CARTRIDGE" ASSEMBLY (BSC-ISI, FMx, ITMx)



TITLE  
IAS LAYOUT FOR H2 FMy, ITMy

DRAWING NO.  
D1002651

REV.  
v1