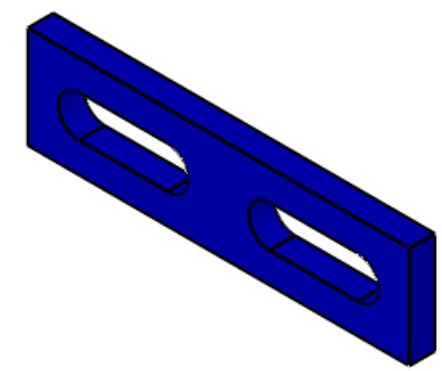


D1002641 aLIGO_Manifold_Cryo_Baffle_Half_Face_Bracket, PART PDM REV: X-013, DRAWING PDM REV: X-008

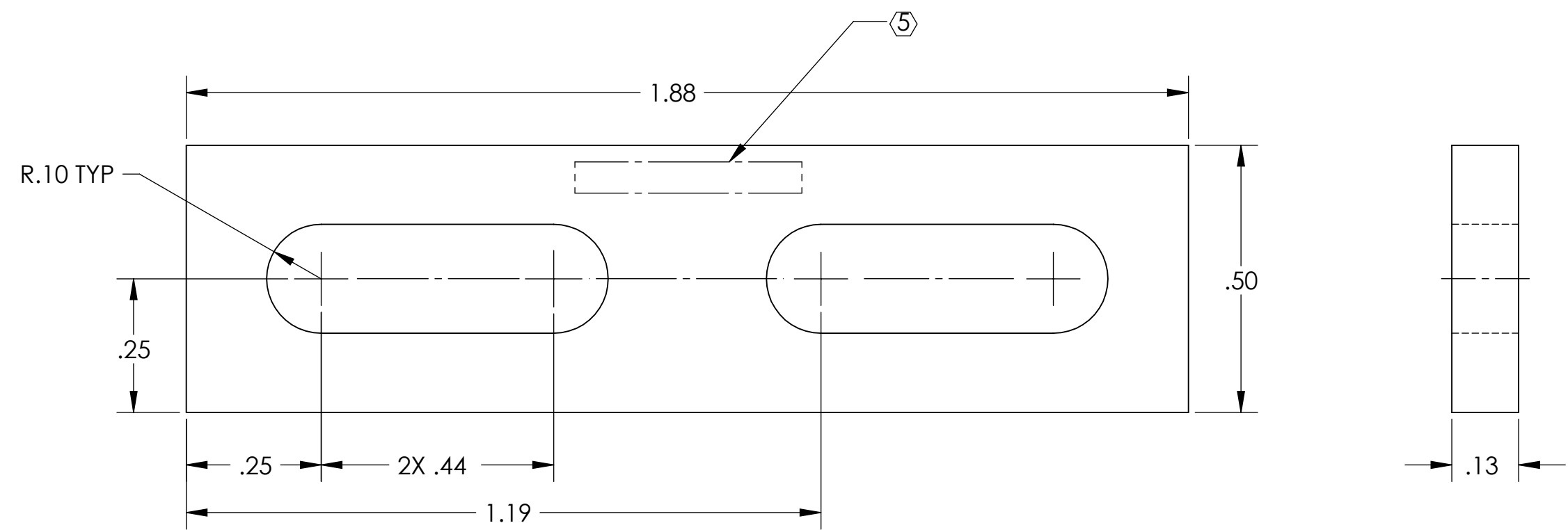
NOTES CONTINUED:
 5. SCRIBE, ENGRAVE (A VIBRATORY TOOL MAY BE USED), LASER MARK OR MECHANICALLY STAMP (NO INKS OR DYES) DRAWING PART NUMBER, REVISION (AND VARIANT OR "TYPE" IF APPLICABLE) ON NOTED SURFACE OF PART FOLLOWED ON THE NEXT LINE WITH A THREE DIGIT SERIAL NUMBER. SERIAL NUMBERS START AT 001 FOR THE FIRST ARTICLE AND PROCEED CONSECUTIVELY. USE MINIMUM 0.12" HIGH CHARACTERS, UNLESS THE SIZE OF THE PART DICTATES SMALLER CHARACTERS. EXAMPLE: DXXXXXX-VY, TYPE-XX, S/N XXX

- 6. APPROXIMATE WEIGHT: 0.008 LB.
- 7. MACHINE ALL SURFACES TO REMOVE OXIDES AND MILL FINISH. USE OF ABRASIVE REMOVAL TECHNIQUES IS NOT ALLOWED
- 8. ALL PARTS SHALL BE MANUFACTURED IN ACCORDANCE WITH LIGO SPECIFICATION E0900364.

REV.	DATE	DCN #	DRAWING TREE #
v1	8 OCT 2010	E1000360	-
v2	12 MAY 2011	E1000360-v2	-
-	-	-	-



GENERAL VIEW
FOR REFERENCE ONLY
NO SCALE



NOTES AND TOLERANCES: (UNLESS OTHERWISE SPECIFIED)				LIGO CALIFORNIA INSTITUTE OF TECHNOLOGY MASSACHUSETTS INSTITUTE OF TECHNOLOGY		PART NAME	
DIMENSIONS ARE IN INCHES		1. INTERPRET DRAWING PER ASME Y14.5-1994. 2. REMOVE ALL SHARP EDGES, R.02 MIN. 3. DO NOT SCALE FROM DRAWING. 4. ALL MACHINING FLUIDS MUST BE FULLY SYNTHETIC, FULLY WATER SOLUBLE AND FREE OF SULFUR, SILICONE, AND CHLORINE.		SYSTEM ADVANCED LIGO		SUB-SYSTEM AOS	
TOLERANCES: .XX ± .01 .XXX ± .005		MATERIAL 6061-T6 Al		FINISH 63 μinch		NEXT ASSY D1002061	
ANGULAR ± 0.5°				DESIGNER TQ. NGUYEN		DATE 8 OCT 2010	
				DRAFTER TQ. NGUYEN		DATE 8 OCT 2010	
				CHECKER M. SMITH		SCALE B	
				APPROVAL D. COYNE		DWG. NO. D1002641	
						REV. v2	
						SHEET 1 OF 1	