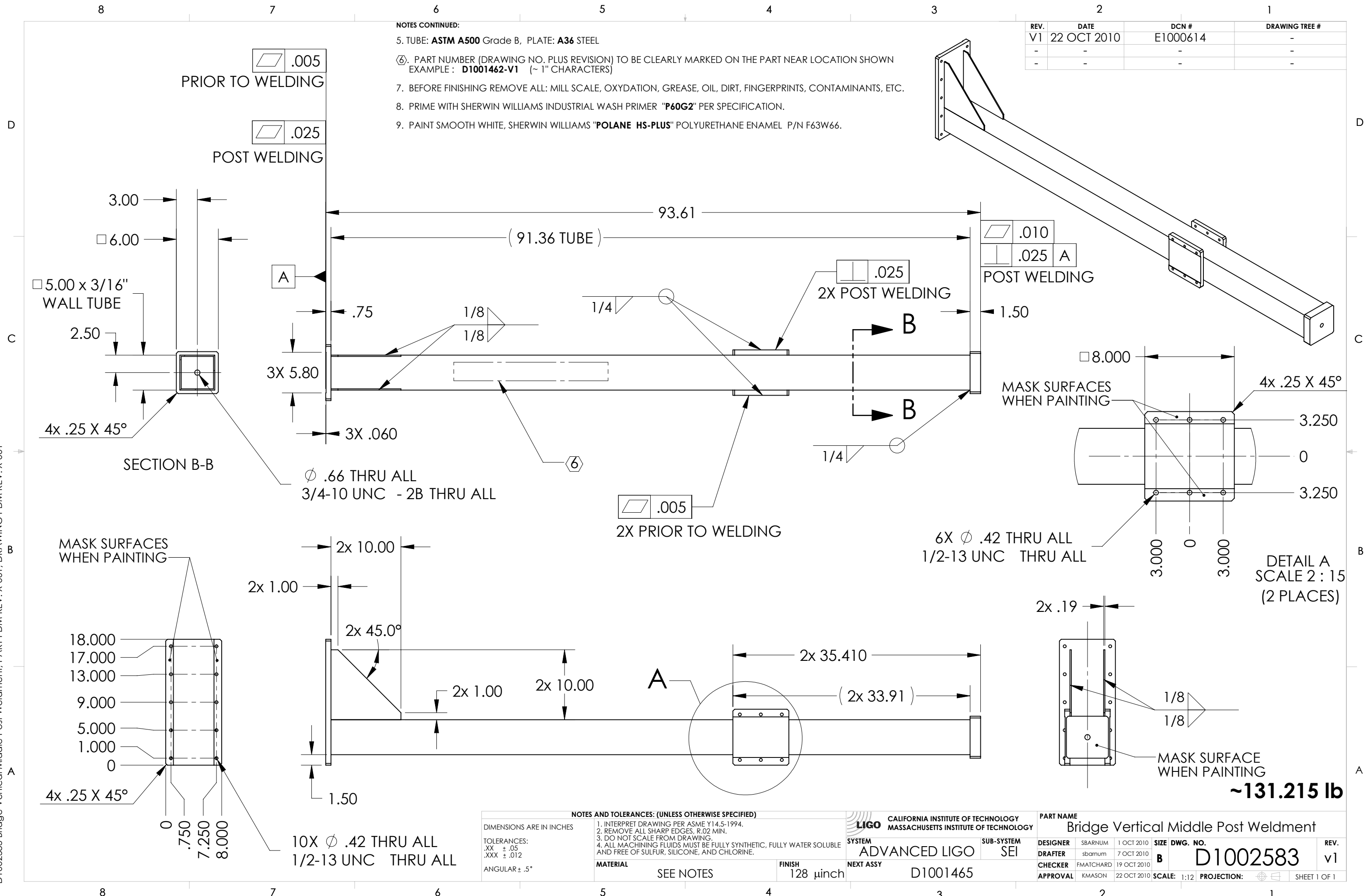


D1002583 Bridge Vertical Middle Post Weldment, PART PDM REV: X-001, DRAWING PDM REV: X-001

NOTES CONTINUED:

5. TUBE: **ASTM A500** Grade B, PLATE: **A36** STEEL
6. PART NUMBER (DRAWING NO. PLUS REVISION) TO BE CLEARLY MARKED ON THE PART NEAR LOCATION SHOWN  
EXAMPLE: **D1001462-V1** (~ 1" CHARACTERS)
7. BEFORE FINISHING REMOVE ALL: MILL SCALE, OXYDATION, GREASE, OIL, DIRT, FINGERPRINTS, CONTAMINANTS, ETC.
8. PRIME WITH SHERWIN WILLIAMS INDUSTRIAL WASH PRIMER "**P60G2**" PER SPECIFICATION.
9. PAINT SMOOTH WHITE, SHERWIN WILLIAMS "**POLANE HS-PLUS**" POLYURETHANE ENAMEL P/N F63W66.

REV.	DATE	DCN #	DRAWING TREE #
V1	22 OCT 2010	E1000614	-
-	-	-	-
-	-	-	-



**NOTES AND TOLERANCES: (UNLESS OTHERWISE SPECIFIED)**

1. INTERPRET DRAWING PER ASME Y14.5-1994.
2. REMOVE ALL SHARP EDGES, R.02 MIN.
3. DO NOT SCALE FROM DRAWING.
4. ALL MACHINING FLUIDS MUST BE FULLY SYNTHETIC, FULLY WATER SOLUBLE AND FREE OF SULFUR, SILICONE, AND CHLORINE.

DIMENSIONS ARE IN INCHES

TOLERANCES:  
 .XX ± .05  
 .XXX ± .012  
 ANGULAR ± .5°

MATERIAL: SEE NOTES  
 FINISH: 128 μinch

<b>LIGO</b> CALIFORNIA INSTITUTE OF TECHNOLOGY MASSACHUSETTS INSTITUTE OF TECHNOLOGY		<b>PART NAME</b> Bridge Vertical Middle Post Weldment	
<b>SYSTEM</b> ADVANCED LIGO	<b>SUB-SYSTEM</b> SEI	<b>DESIGNER</b> SBARNUM 1 OCT 2010	<b>SIZE DWG. NO.</b> B D1002583
<b>DRAFTER</b> sbarnum 7 OCT 2010	<b>CHECKER</b> FMATCHARD 19 OCT 2010	<b>APPROVAL</b> KMASON 22 OCT 2010	<b>REV.</b> v1
<b>SCALE:</b> 1:12		<b>PROJECTION:</b>	
SHEET 1 OF 1			