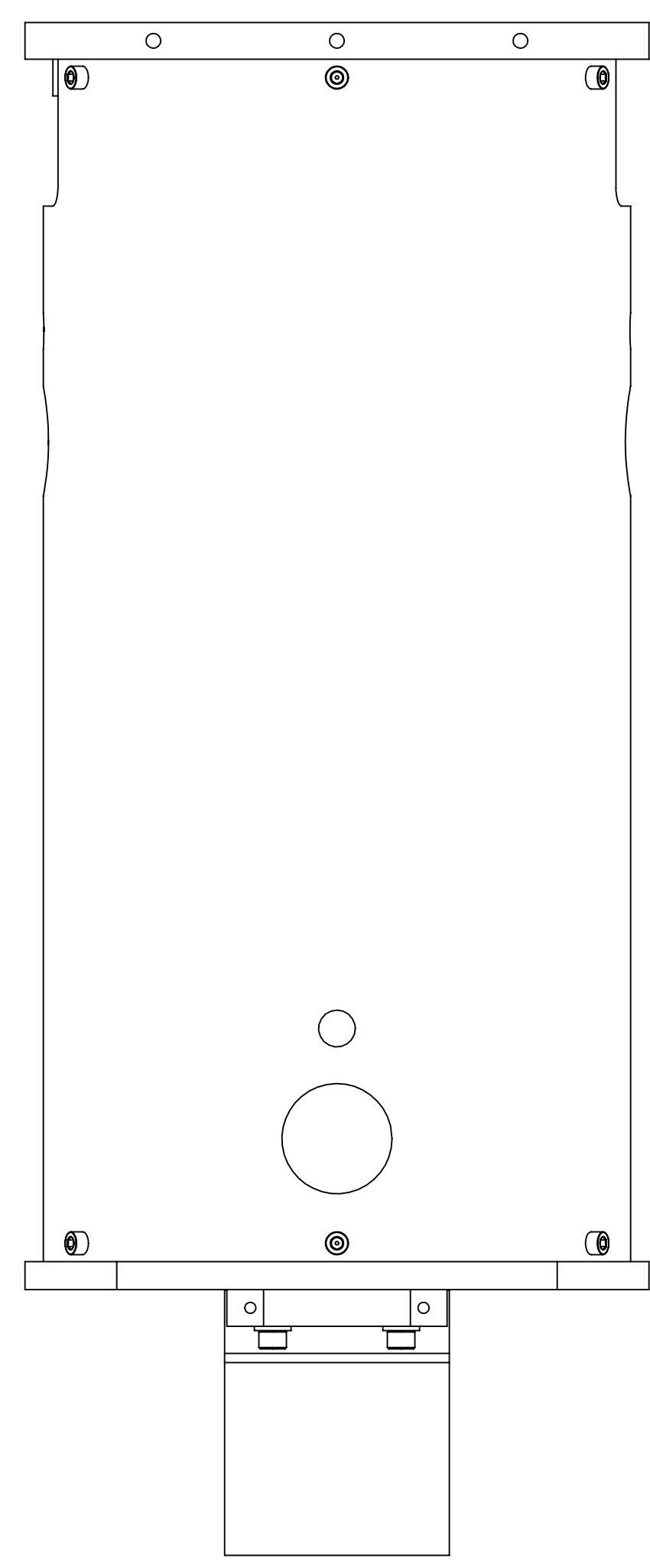
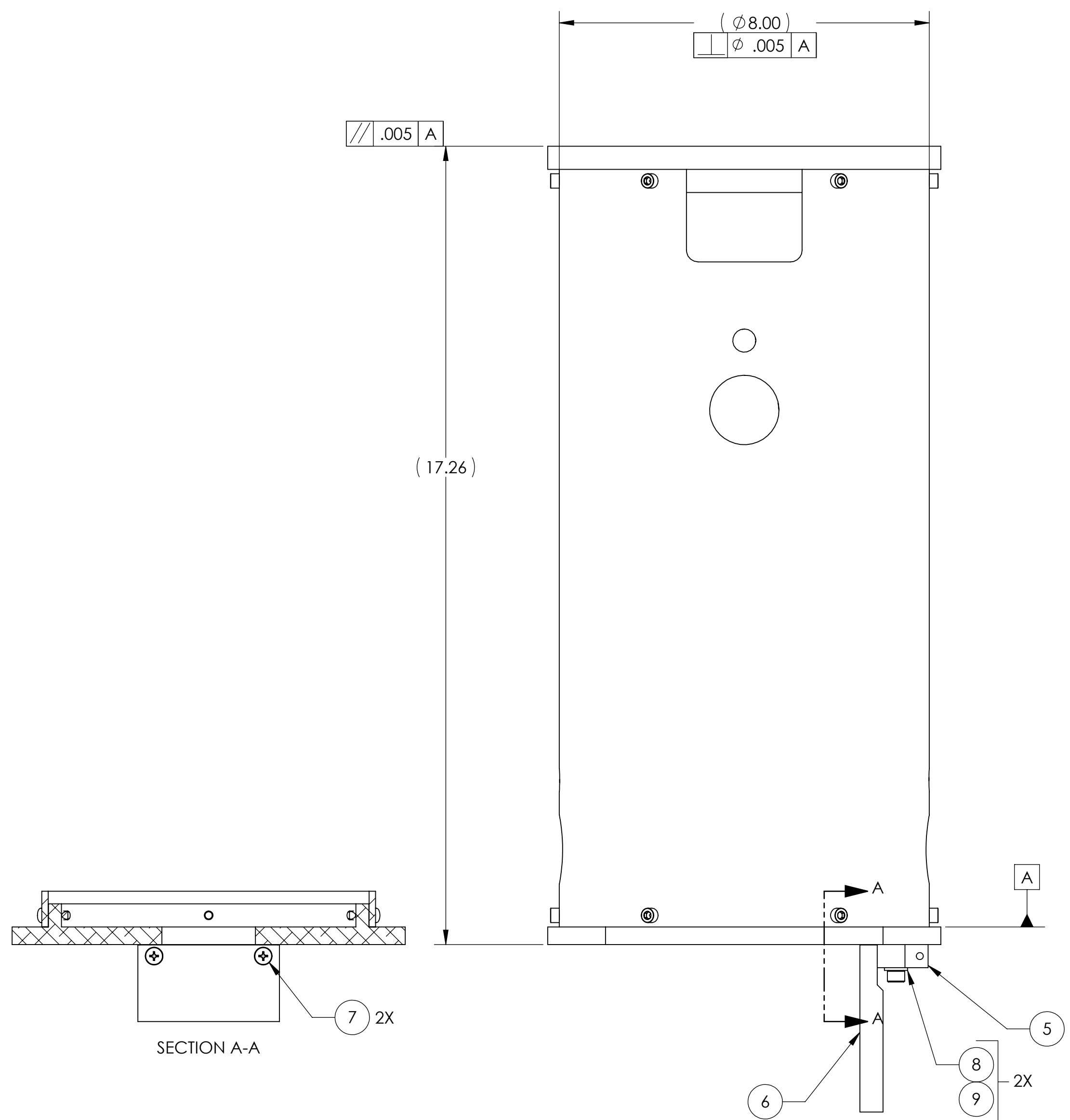
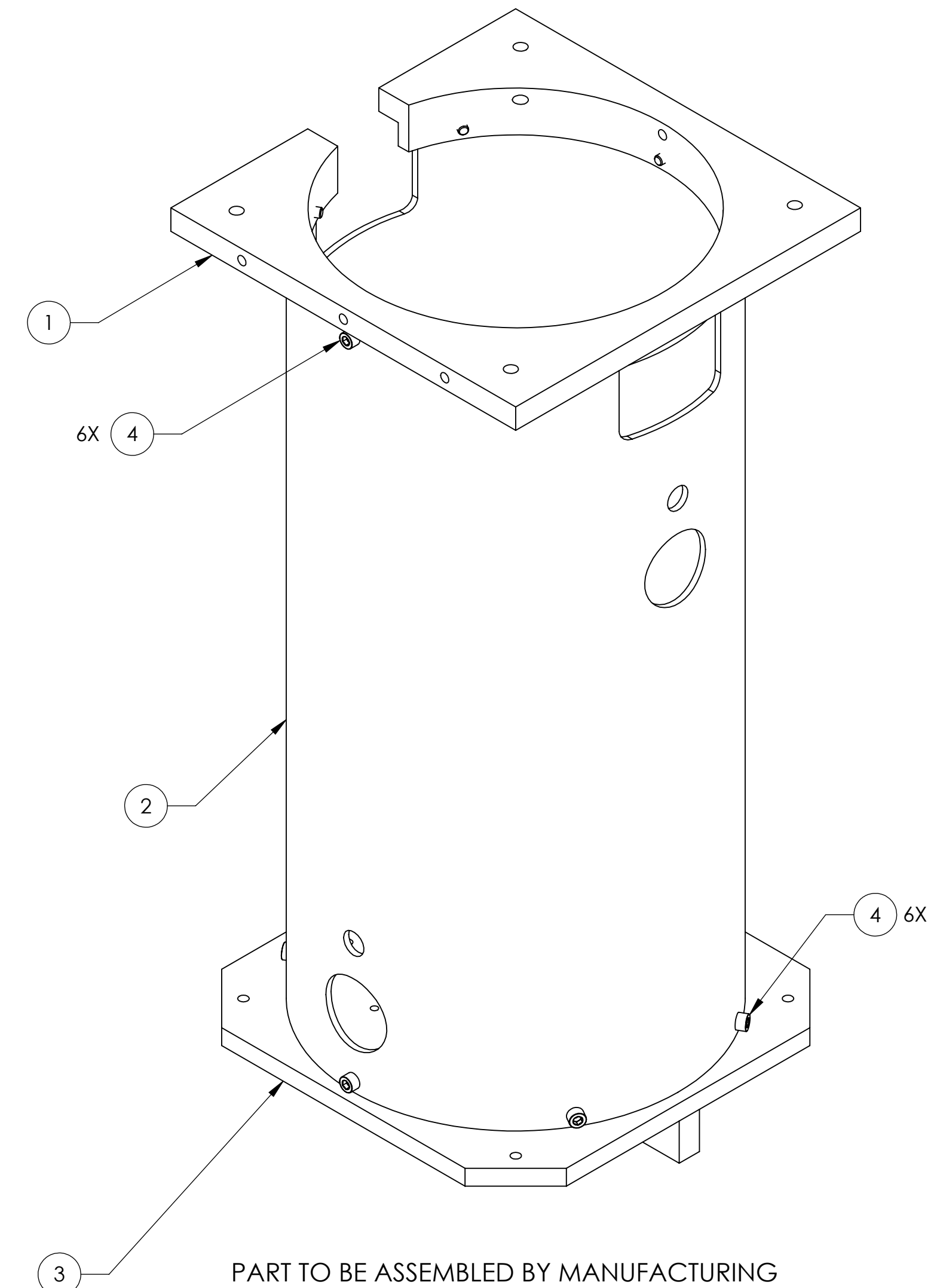
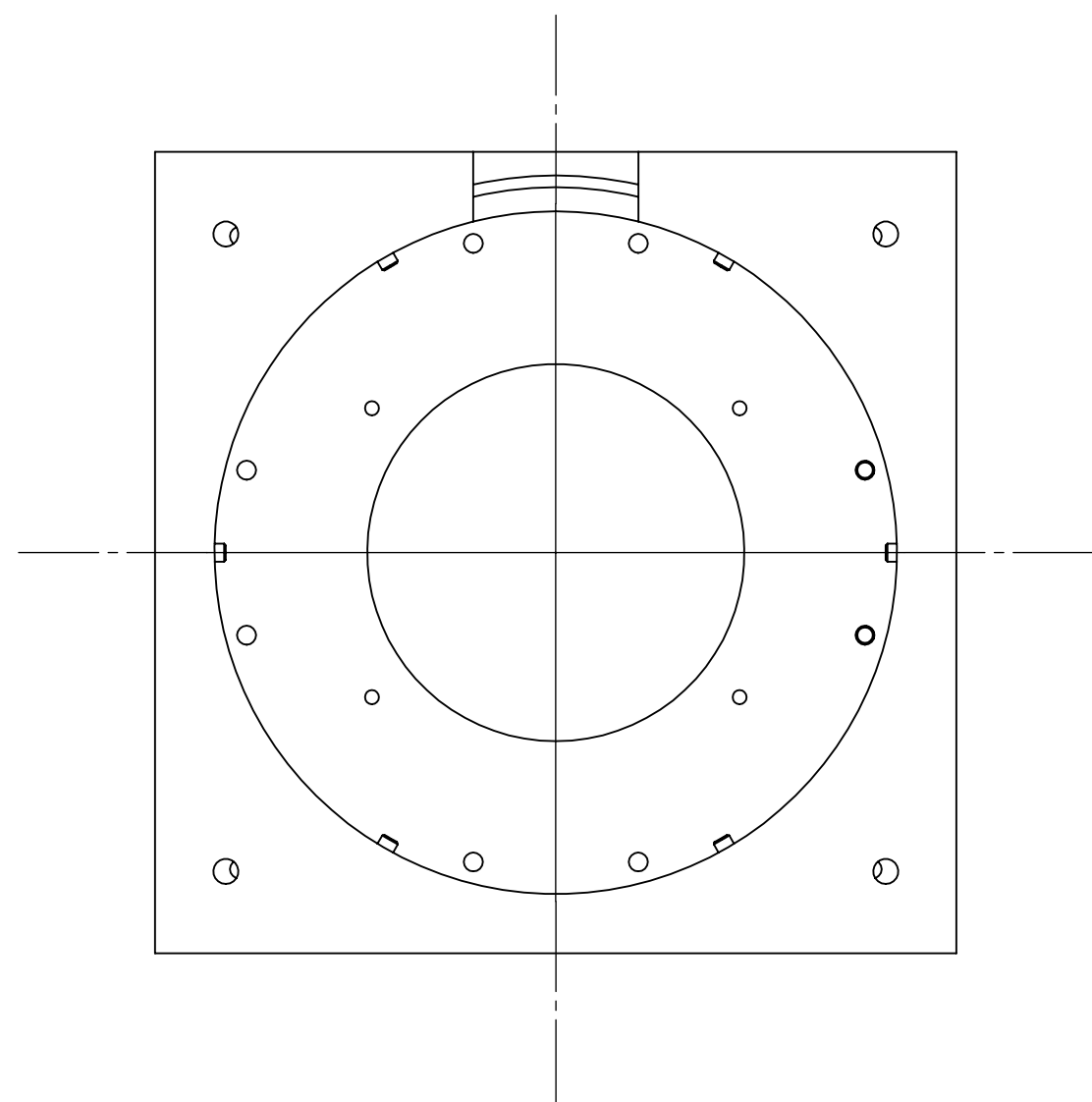


REV.	DATE	DCN #	DRAWING TREE #
v1	02 JUN 2010	E1100216	E1000647
v2	05 DEC 2011	E1100335	



ITEM NO.	PART NUMBER	DESCRIPTION	MATERIAL	REQ	SPARE	TOTAL
9	95435A755	SCREW SHCS #.25-20 X .75, McMASTER	TITANIUM	2		2
8	93286A044	WASHER #25 ALUM, McMASTER	6061-T6	2		2
7	90233A815	FLAT HD SCREW # 10-24 X .50, McMASTER	TITANIUM	2		2
6	D1000909	SLC COPPER PLATE	COPPER	1		1
5	D1000929	SLC COPPER SUPPORT PLATE	6061-T6 Al	1		1
4	92200A242	SCREW, SOCKET HEAD CAP, #10-24 UNC-2A X 0.5 LONG, McMASTER	300 SSTL	12	6	18
3	D1002617	SLC DAMPING TUBE LOWER PLATE	6061-T6 Al	1		1
2	D1002561	SLC DAMPING 8 DIA TUBE	6061-T6 Al	1		1
1	D1002560	SLC DAMPING TUBE TOP PLATE	6061-T6 Al	1		1

NOTES AND TOLERANCES: (UNLESS OTHERWISE SPECIFIED)

1. INTERPRET DRAWING PER ASME Y14.5-1994.
 2. REMOVE ALL SHARP EDGES, R.02 MIN.
 3. DO NOT SCALE FROM DRAWING.
 4. ALL MACHINING FLUIDS MUST BE FULLY SYNTHETIC, FULLY WATER SOLUBLE AND FREE OF SULFUR, SILICONE, AND CHLORINE.

DIMENSIONS ARE IN INCHES

TOLERANCES:
 .XX ±
 .XXX ±

ANGULAR ± °

MATERIAL N/A FINISH N/A

LIGO CALIFORNIA INSTITUTE OF TECHNOLOGY
 MASSACHUSETTS INSTITUTE OF TECHNOLOGY

SYSTEM ADVANCED LIGO SUB-SYSTEM AOS

NEXT ASSY D1002564

PART NAME
SLC DAMPING 8 DIA TUBE ASSEMBLY

DESIGNER	N.Nguyen	01 Jun 2010	SIZE	DWG. NO.	REV.
DRAFTER	TG. NGUYEN	15 JUL 2010	D	D1002563	v2
CHECKER	M. SMITH	1 NOV 2010			
APPROVAL	D. COYNE	10 NOV 2010	SCALE: 1:2	PROJECTION:	SHEET 1 OF 1

D1002563_AsdLIGO_AOS_SLC Damping 8 Dia Tube Assy. PART PDM REV: X034 DRAWING PDM REV: X010