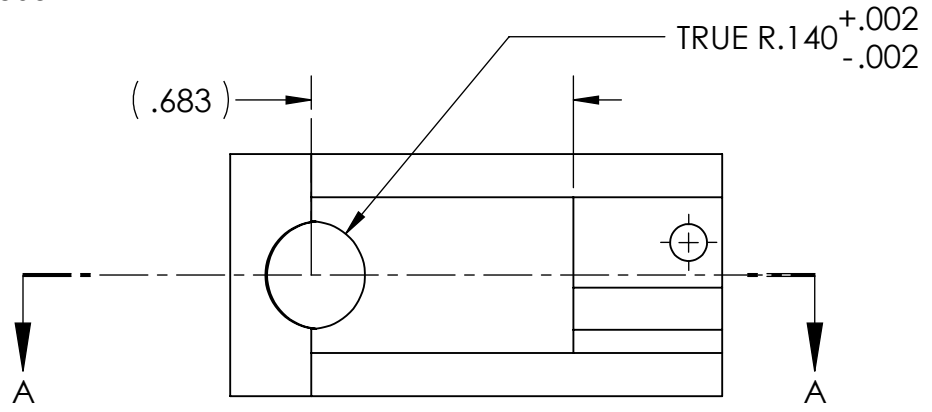
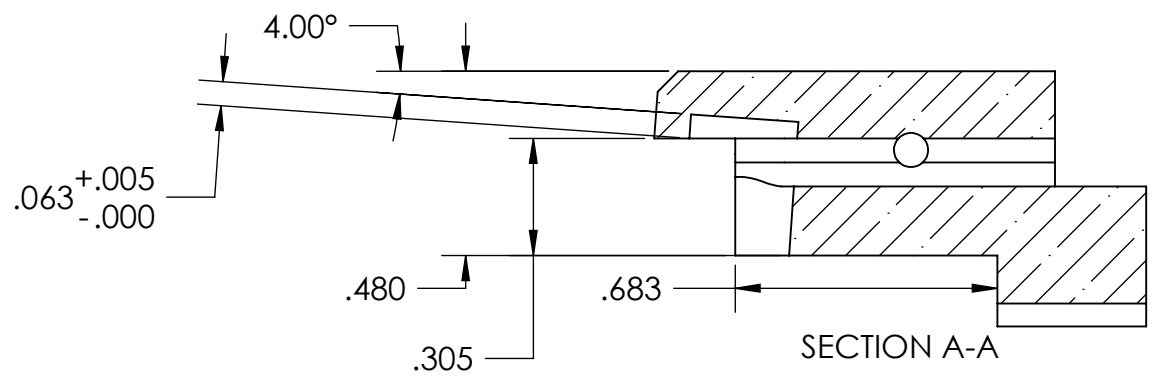
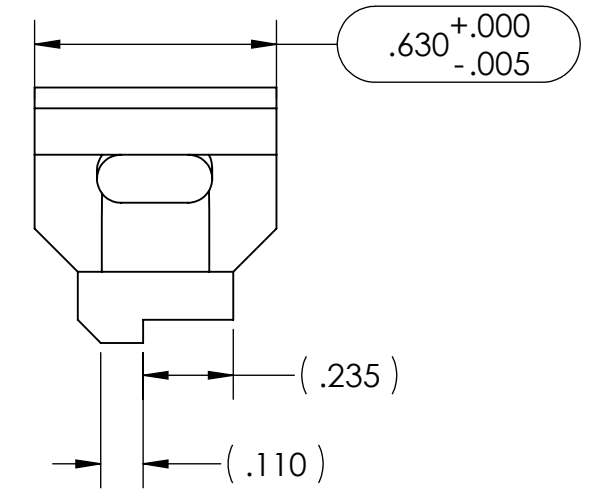
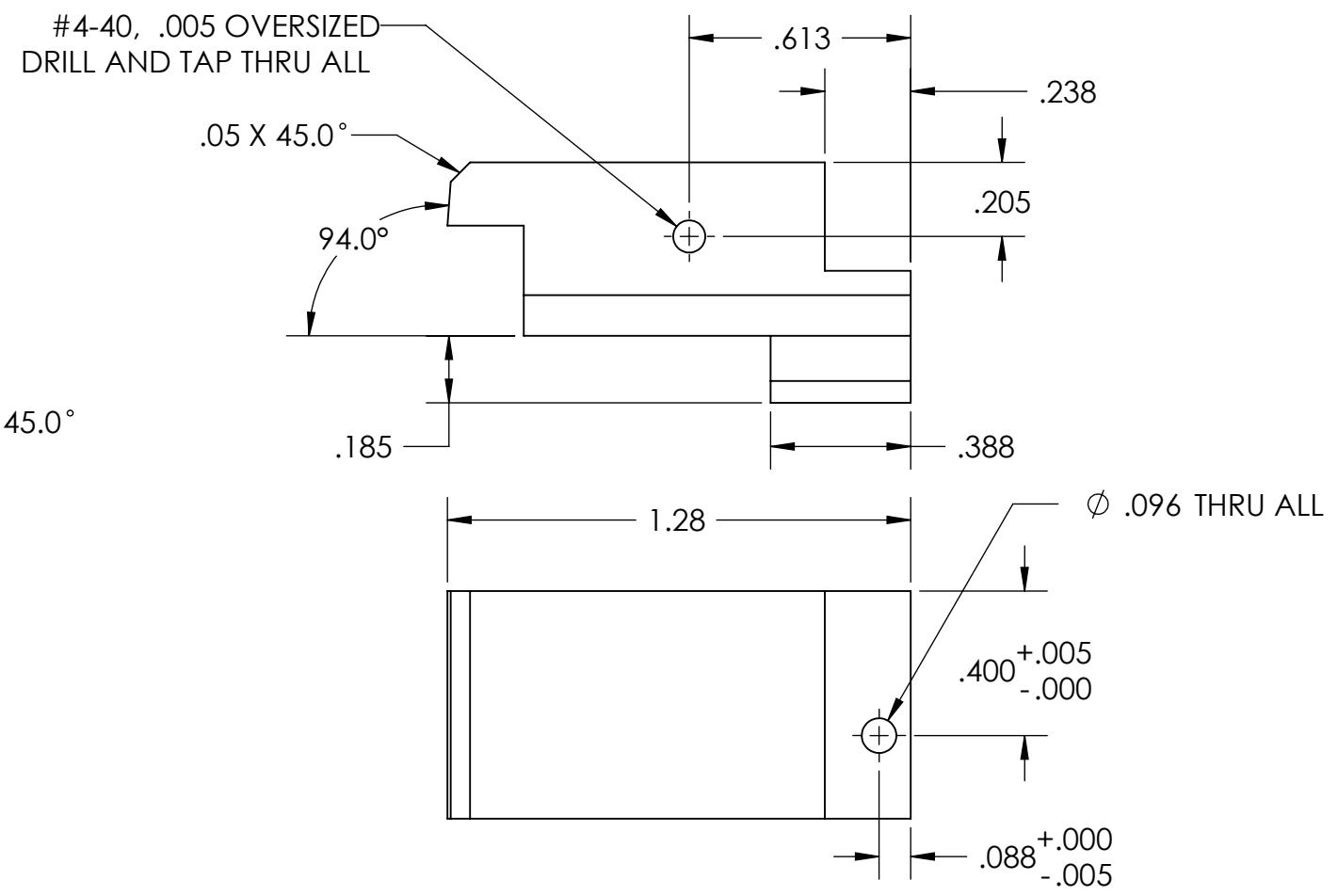
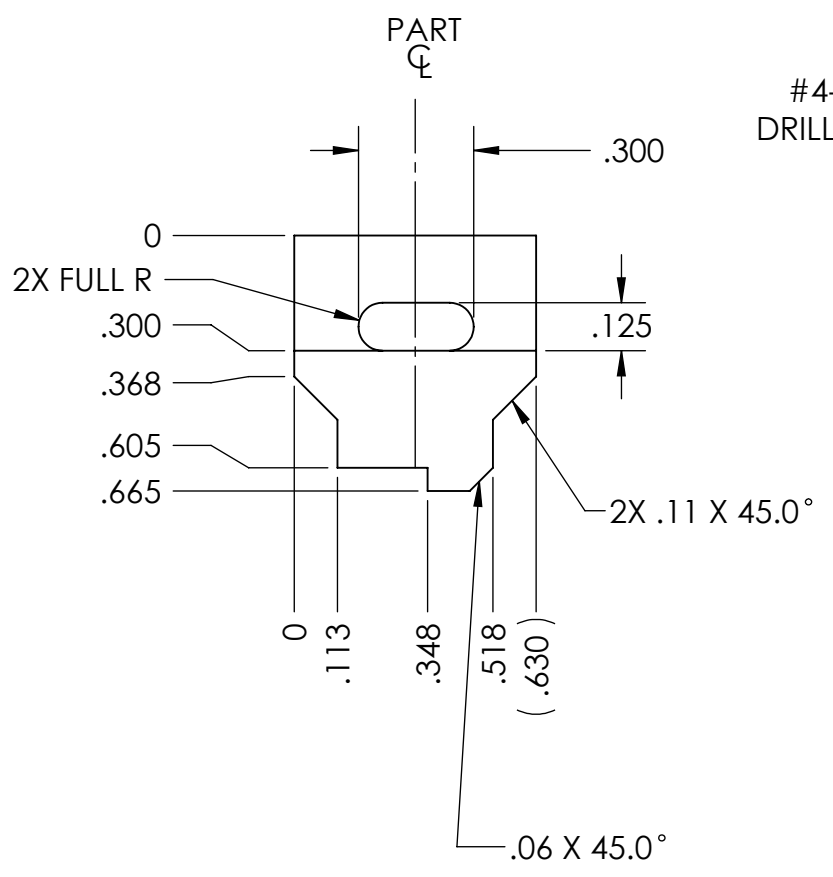
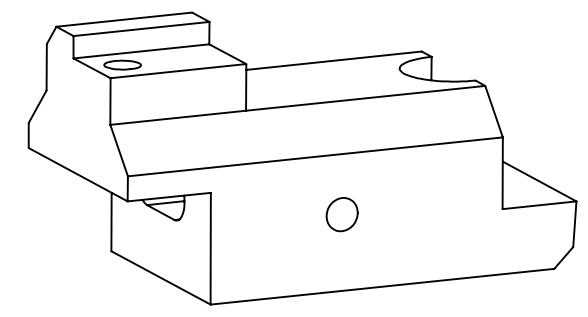


D1002543_RH ELEMENT RETAINER, SIMPLIFIED LEFT, PART PDM REV: X-012, DRAWING PDM REV: X-018

- NOTES CONTINUED:**
- 5. SCRIBE, ENGRAVE, OR MECHANICALLY STAMP (NO DYES OR INKS) A UNIQUE THREE DIGIT SERIAL NUMBER & REVISION NUMBER ON EACH PART. SERIAL NUMBERS START AT 001 FOR THE FIRST ARTICLE AND PROCEED CONSECUTIVELY. BAG AND TAG PARTS WITH THEIR DRAWING PART NUMBER, REVISION, VARIANT OR "TYPE" (IF APPLICABLE), AND QUANTITY. IF PARTS ARE TOO SMALL TO SCRIBE, BAGGING AND TAGGING ALONE IS SUFFICIENT.
EXAMPLE (PART): 001-v1
EXAMPLE (TAG): DXXXXXX-VY, TYPE-XX, QTY: TBD
 - 6. APPROXIMATE WEIGHT = 0.03 LB.
 - 7. MACHINE ALL SURFACES TO REMOVE OXIDES AND MILL FINISH. USE OF ABRASIVE REMOVAL TECHNIQUES IS NOT ALLOWED.
 - 8. ALL PARTS SHALL BE MANUFACTURED IN ACCORDANCE WITH LIGO SPECIFICATION E0900364.



REV.	DATE	DCN #	DRAWING TREE #
v1	13-OCT-2010		
v2	06-NOV-2010	E1000291-v3	E1000295-v4



NOTES AND TOLERANCES: (UNLESS OTHERWISE SPECIFIED)				LIGO CALIFORNIA INSTITUTE OF TECHNOLOGY MASSACHUSETTS INSTITUTE OF TECHNOLOGY		PART NAME	
DIMENSIONS ARE IN INCHES TOLERANCES: .XX ± .01 .XXX ± .005 ANGULAR ± 0.1°				1. INTERPRET DRAWING PER ASME Y14.5-1994. 2. REMOVE ALL SHARP EDGES, R.02 MAX. 3. DO NOT SCALE FROM DRAWING. 4. ALL MACHINING FLUIDS MUST BE FULLY SYNTHETIC, FULLY WATER SOLUBLE AND FREE OF SULFUR, SILICONE, AND CHLORINE.		RH ELEMENT CONNECTOR, SIMPLIFIED LEFT	
MATERIAL: MACOR CERAMIC				FINISH: 32 μinch		SYSTEM: ADVANCED LIGO SUB-SYSTEM: AOS	
NEXT ASSY: D1001838, D1001859				DESIGNER: M. JACOBSON 01 OCT 2010		SIZE DWG. NO. B D1002543	
				DRAFTER: M. JACOBSON 01 OCT 2010		REV. v2	
				CHECKER: A. COLE 01 OCT 2010		SCALE: 2:1	
				APPROVAL: P. WILLEMS 01 OCT 2010		PROJECTION:	
						SHEET 1 OF 1	