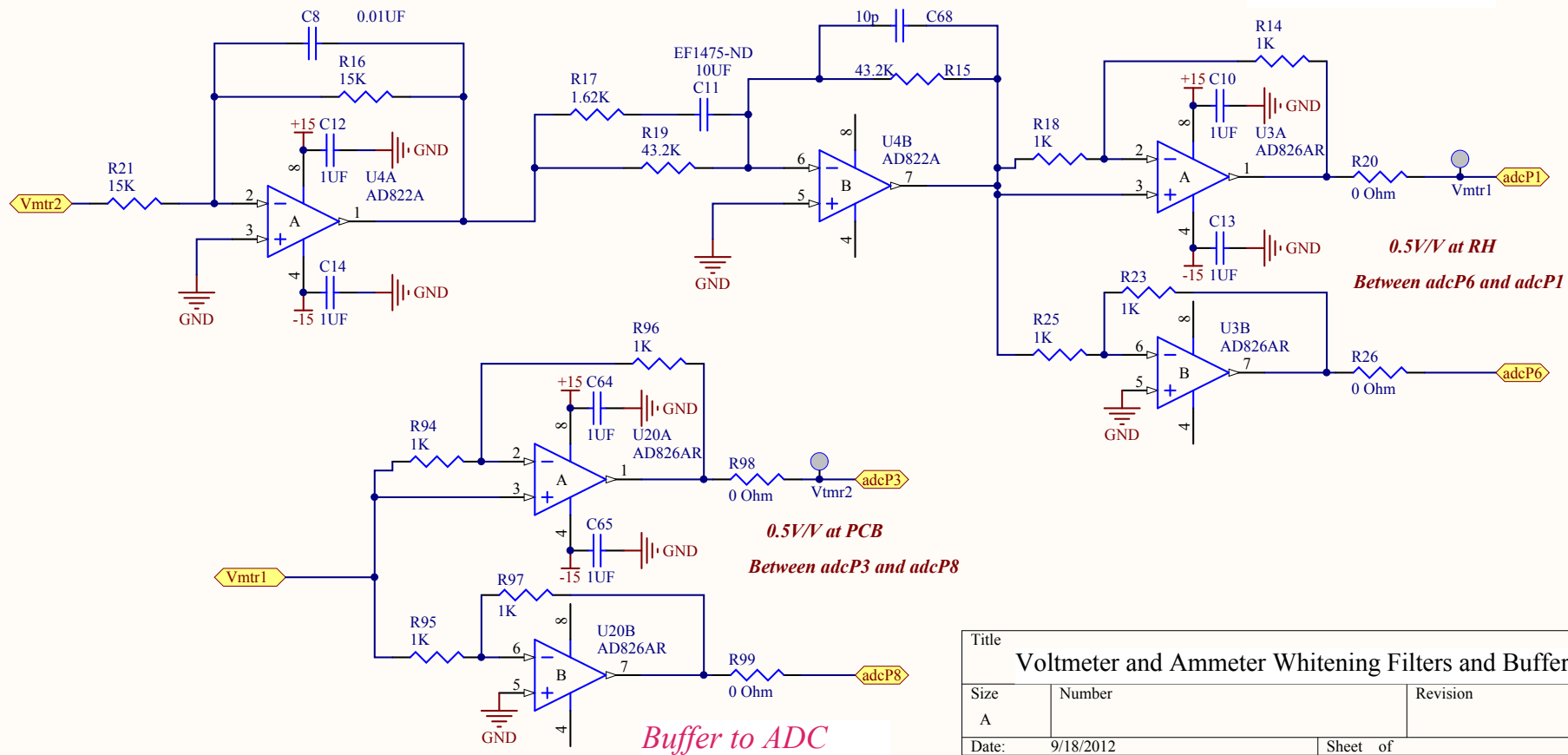
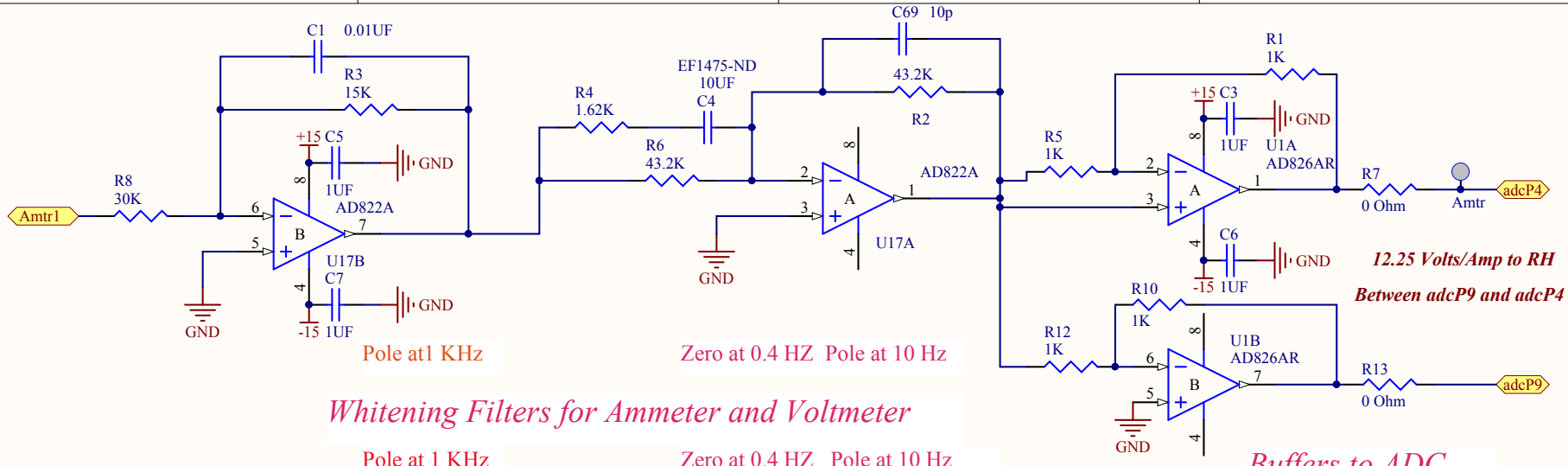


Title Ring Heater Driver		LIGO California Institute of Technology		Last Edited:	
Size: B	DCC Number: LIGO D1002529	Revision: 5	Engineer: Steve O'Connor	Date: 9/18/2012	Time: 6:36:42 PM
File: C:\Documents and Settings\soconnor\My Documents\AltiumDesigns\Ring Heater Driver\SchDoc				Sheet 1 of 1	



Title		
Voltmeter and Ammeter Whitening Filters and Buffers		
Size	Number	Revision
A		
Date:	9/18/2012	Sheet of
File:	C:\Documents and Settings\...DriverMeters.Dsbld	5 of 5

Buffer to ADC

RTD Filter

temp in C
V between adcP7 and adcP2

$V = 2.57 + (0.02) * (temp)$

10 mV/C

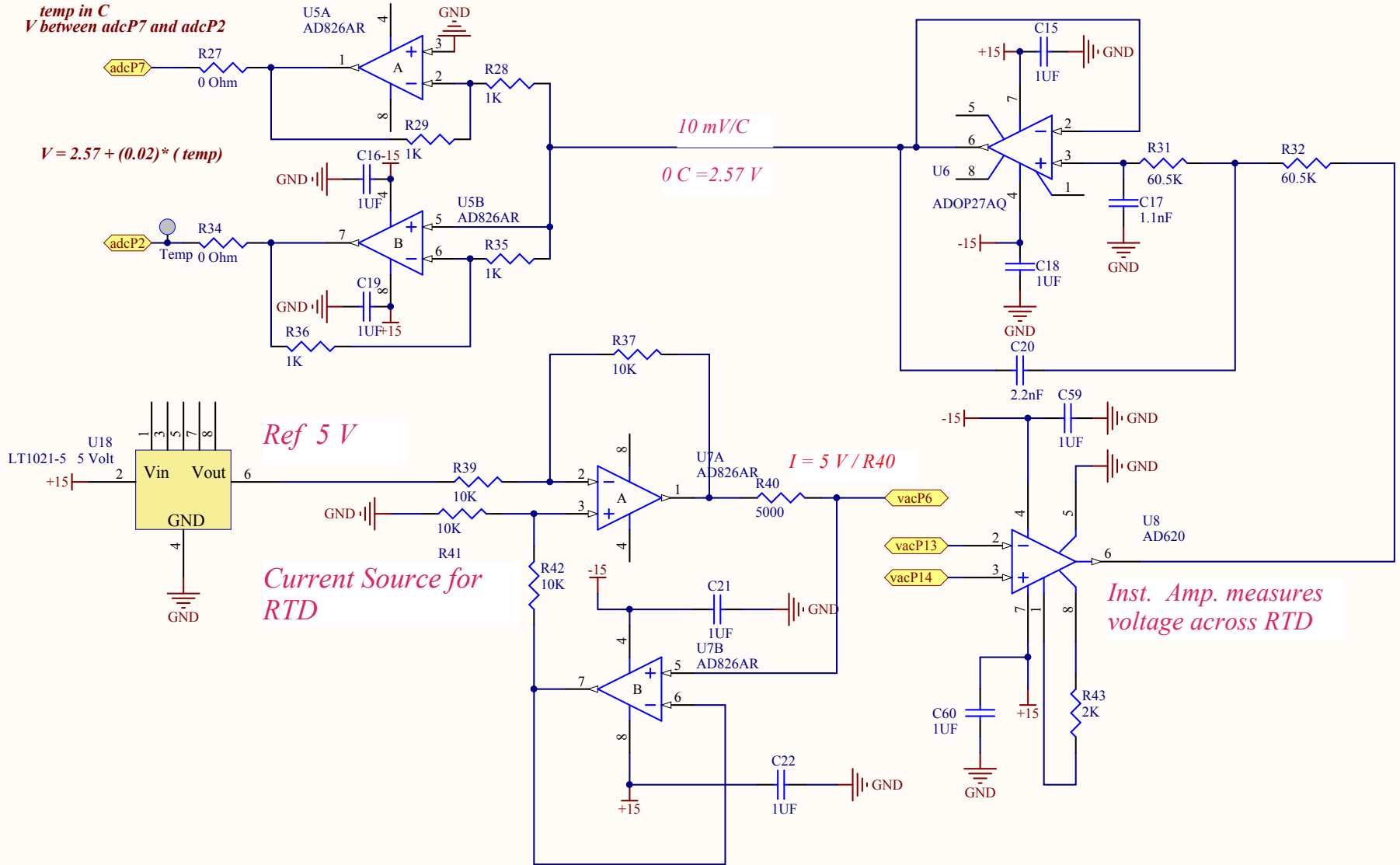
0 C = 2.57 V

Ref 5 V

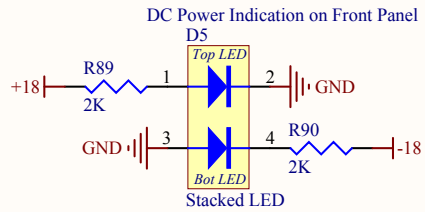
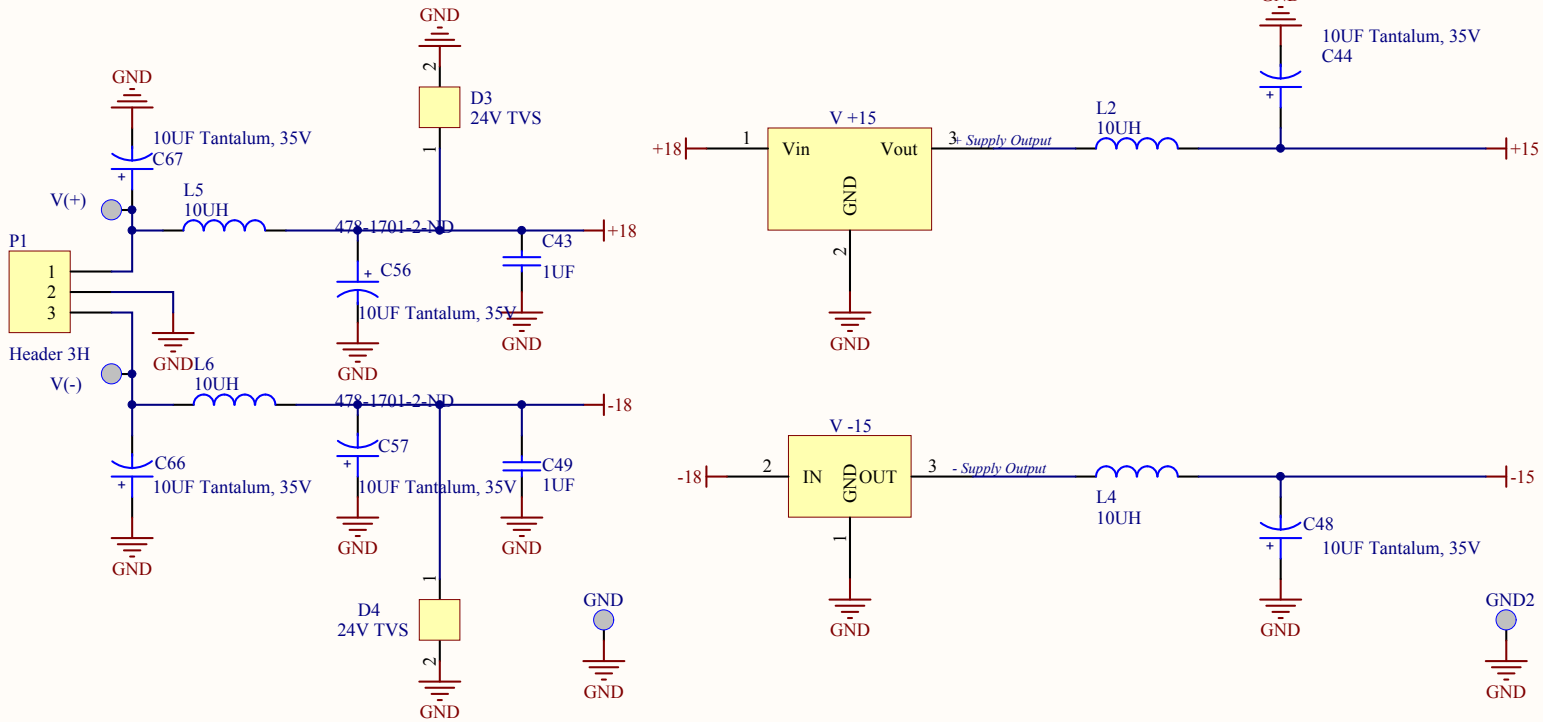
Current Source for RTD

$I = 5 V / R40$

Inst. Amp. measures voltage across RTD



Title		
Temperature Sensor		
Size	Number	Revision
A		
Date:	9/18/2012	Sheet of
File:	C:\Documents and Settings\... \DriverMonitor	6 of 6



Title		
DC Power		
Size	Number	Revision
A		
Date:	9/18/2012	Sheet of
File:	C:\Documents and Settings\... \DriverPowerSupplyByhDoc	

