

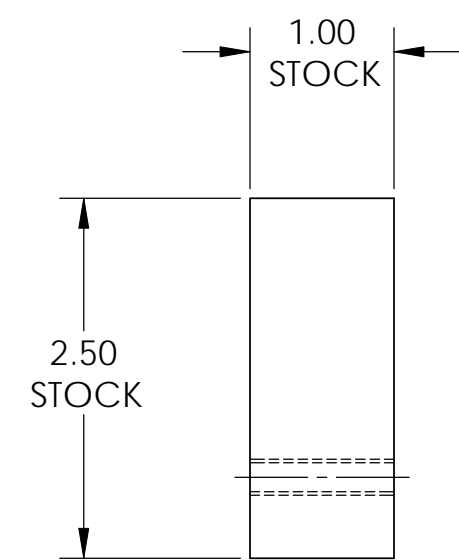
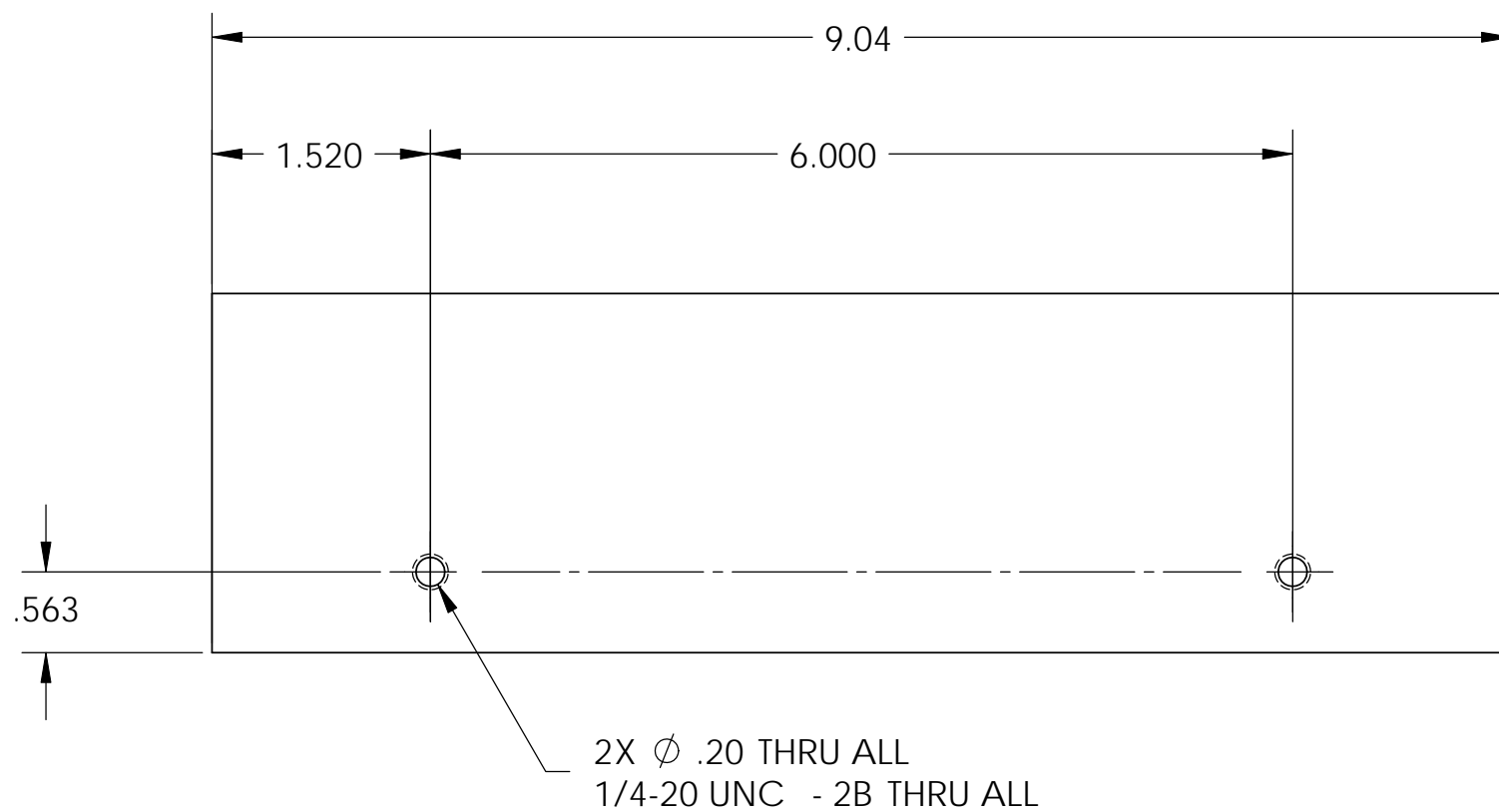
D1002499 aLIGO OPLEV STIFFENER WELDMENT BAR, PART PDM REV: X-015, DRAWING PDM REV: X-004

8 7 6 5 4 3 2 1

NOTES CONTINUED:

- 5. APPROXIMATE WEIGHT = 2.18 LBS.
- 6. SURFACE FINISH TO BE AS-PROCESSED FROM MILL/SUPPLIER, FREE FROM SCRATCHES OR GOUGES.

REV.	DATE	DCN #	DRAWING TREE #
v1	17 FEB 2011	E1100106-v1	-
-	-	-	-
-	-	-	-



D C B A

NOTES AND TOLERANCES: (UNLESS OTHERWISE SPECIFIED)	
DIMENSIONS ARE IN INCHES	1. INTERPRET DRAWING PER ASME Y14.5-1994. 2. REMOVE ALL SHARP EDGES, .005-.015, FOR MACHINED PARTS. ROUND ALL EDGES APPROXIMATELY R.02 FOR SHEET METAL PARTS. 3. DO NOT SCALE FROM DRAWING. 4. ALL MACHINING FLUIDS MUST BE FULLY SYNTHETIC, FULLY WATER SOLUBLE AND FREE OF SULFUR, SILICONE, AND CHLORINE.
TOLERANCES: .XX ± .03 .XXX ± .005	
ANGULAR ± 0.5°	
MATERIAL	304 SSSL
FINISH	μinch

CALIFORNIA INSTITUTE OF TECHNOLOGY MASSACHUSETTS INSTITUTE OF TECHNOLOGY		PART NAME aLIGO OPLEV STIFFENER WELDMENT BAR	
SYSTEM ADVANCED LIGO	SUB-SYSTEM AOS	DESIGNER J. TERRAZAS	DATE 17 FEB 2011
NEXT ASSY D1002493	CHECKER	APPROVAL	SCALE: 1:2
		SIZE B	DWG. NO. D1002499
		PROJECTION:	
		SHEET 1 OF 1	

8 7 6 5 4 3 2 1