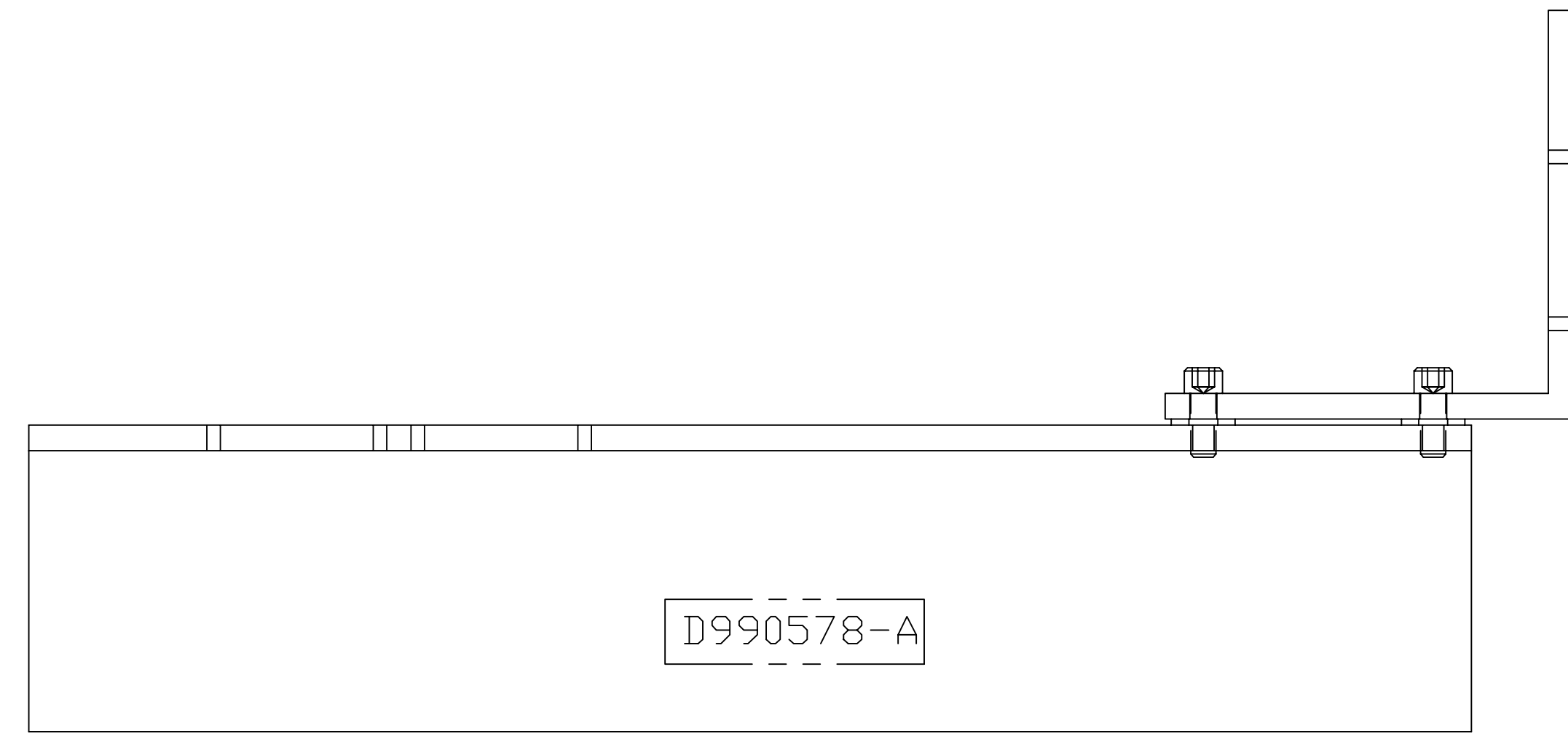
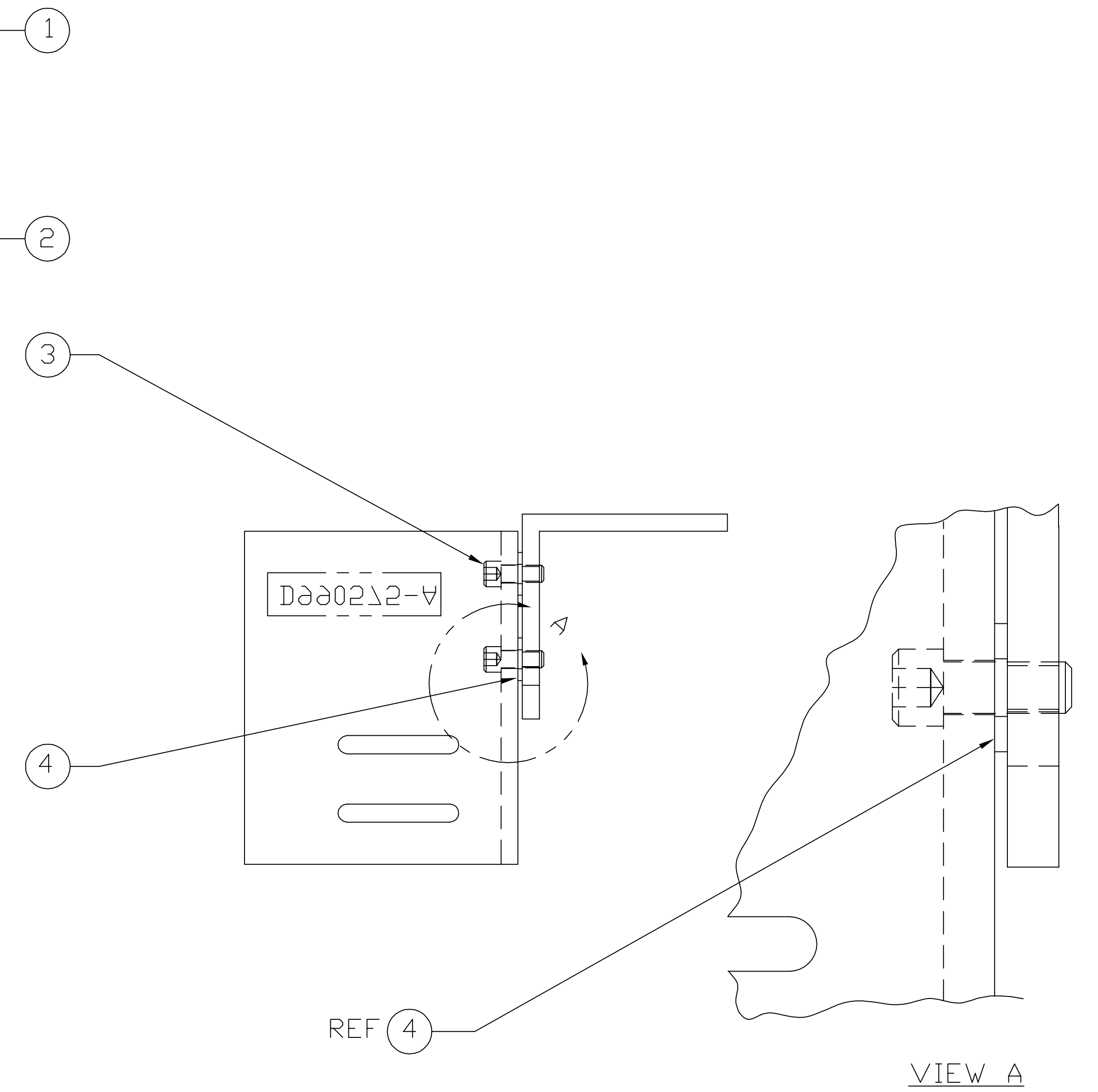
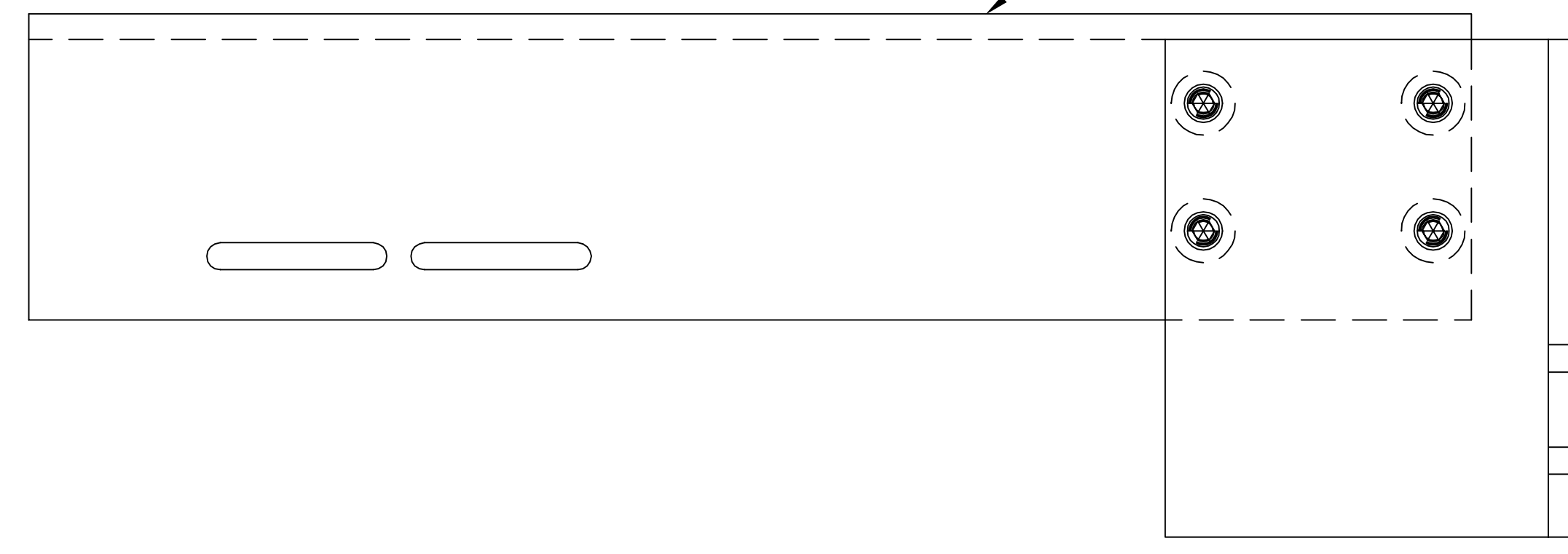
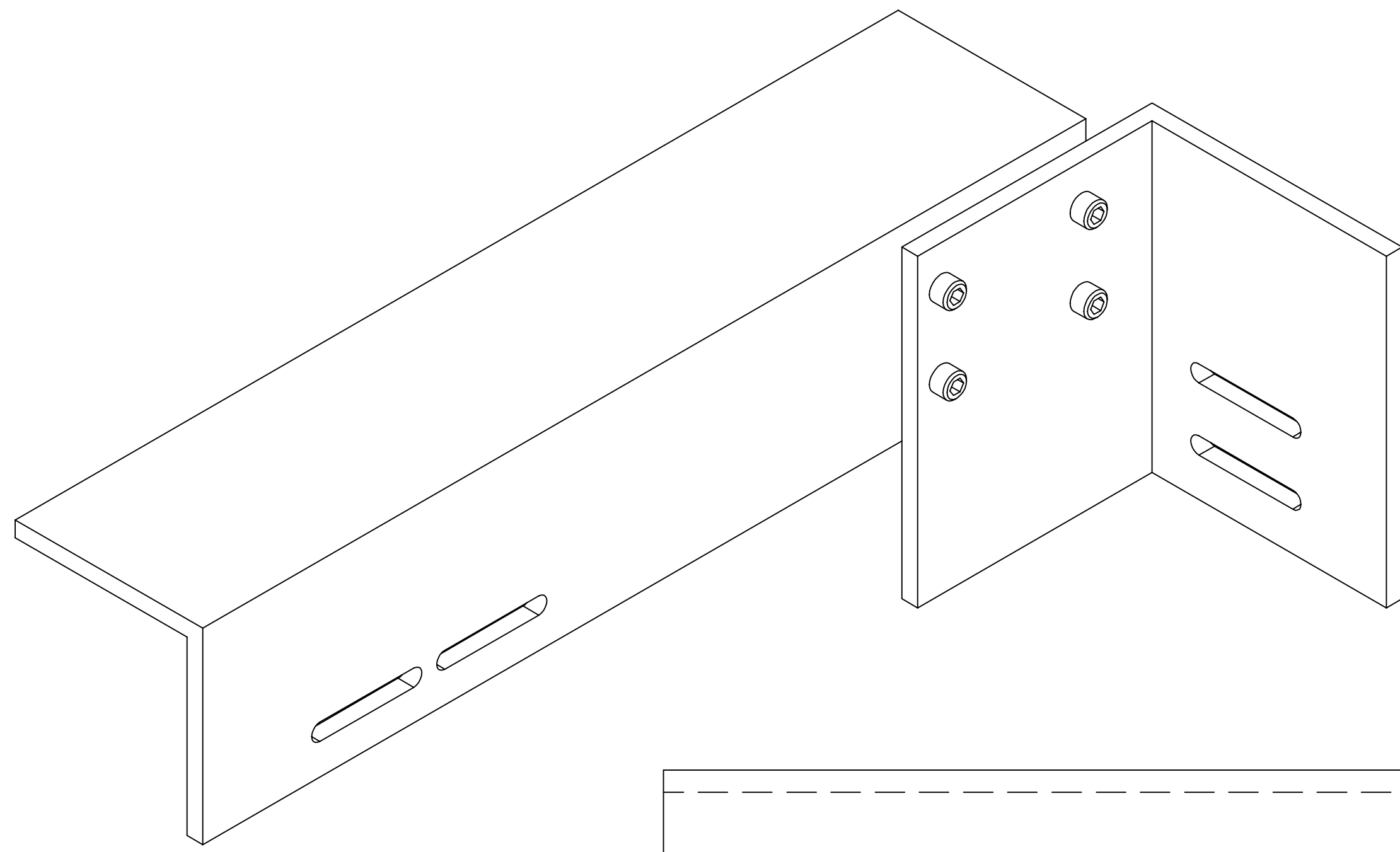


NOTES: (UNLESS OTHERWISE SPECIFIED)  
 1. THIS IS A UHV APPLICATION AND ALL PARTS ARE TO BE KEPT CLEAN AND FREE FROM CONTAMINANTS INCLUDING LUBRICANTS, PRIOR TO AND DURING ASSEMBLY.



REF	QTY	PART or DRWG No.	DESCRIPTION	MATERIAL
4	4	UC COMPONENTS # WFV-25	1/4 NOM I.D. FLAT WASHER-VENTED	STAINLESS STEEL
3	4	UC COMPONENTS # C-2812-NA	1/4-28 x .75 LONG SHCS	STAINLESS STEEL W/SILVER PL
2	1	D990575	RIGHT CLIP	-
1	1	D990578	RIGHT SUPPORT ANGLE	-

UNLESS OTHERWISE SPECIFIED DIMENSIONS ARE IN INCHES		TOLERANCES: FRACTIONAL ± ANGULAR ± ANGULARMACH ± BEND ± TWO PLACE DECIMAL ±		THREE PLACE DECIMAL ± FINISHED SURFACE RMS BREAK CORNERS IN: OUT: REMOVE ALL BURRS		MATERIAL:		HEAT TREAT:		FINISH:		A		RELEASE		E990036		-		-		-		KABOT		3-10-99		CAD FILE		SIZE DWG. NO.	
DWG. NO.		DESCRIPTION		USED ON:		NEXT ASS'Y: D990597, D990616		REV		DESCRIPTION		DCN NUMBER		APPR'D		CHECK		DRWN		DATE		SCALE		NTS		SHEET		1 OF 1			
REFERENCE DRAWINGS																															

LIGO CALIFORNIA INSTITUTE OF TECHNOLOGY  
 MASSACHUSETTS INSTITUTE OF TECHNOLOGY  
 I. D. BAFFLE,  
 RIGHT SUPPORT ASSEMBLY  
 angclip\_R.dwg  
 D9900590-A