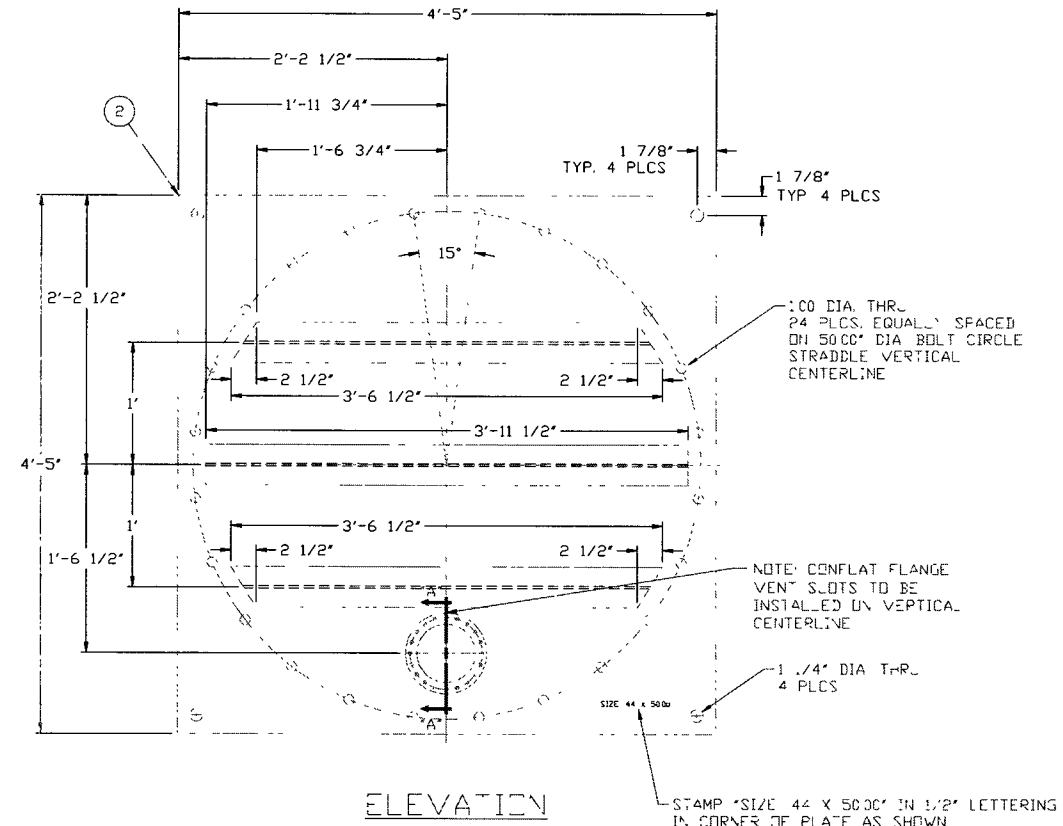
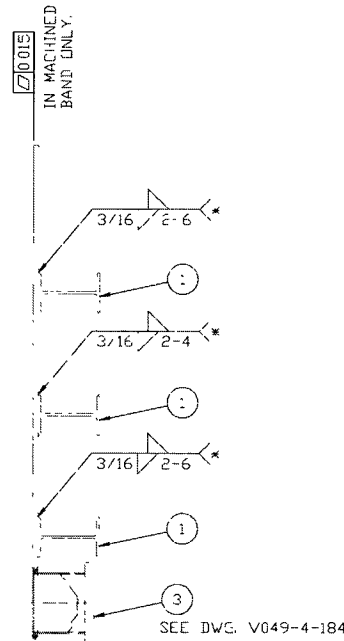
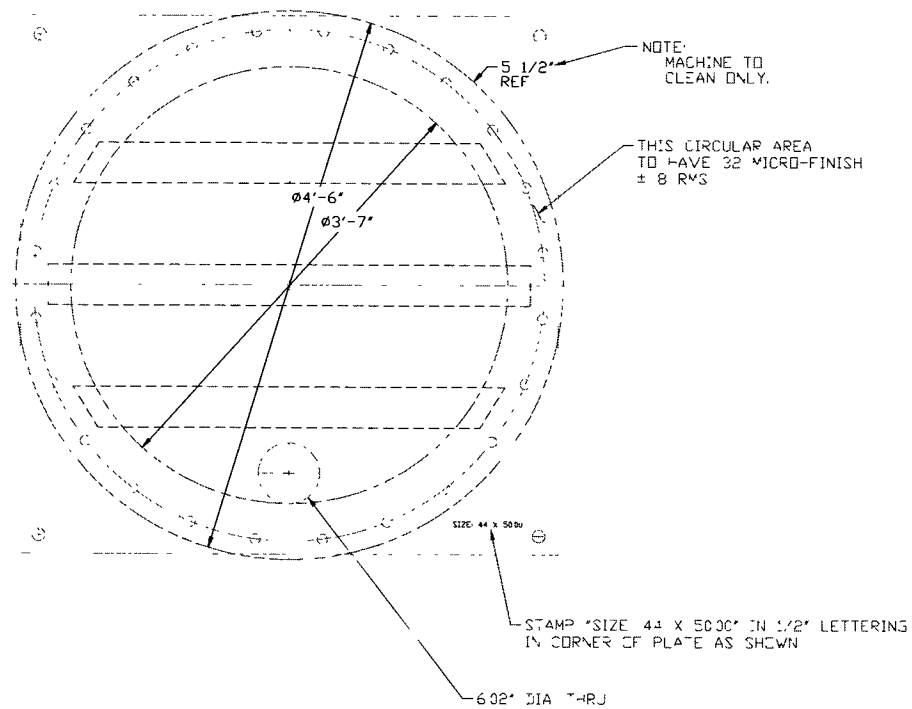


# ELECTRONIC COPY



NOTES  
 \*1 WELDING PROCESS TO MINIMIZE DISTORTION/FLATNESS OF PLATE. VENDOR TO FLATTEN ASSEMBLY AFTER WELDING

LIGO-D990322-01-V

ITEM	PART NUMBER	QTY	U/M	DESCRIPTION
3	304 S/S	1	EA	HALF IN. PPLE 6" CD TUBE X 8" DC CF X 5' LG
2		195	SF	PLATE, 1/2" THK X 4'-5" SQ, 304 SST
1		11'-1'	FT	1/2" BEAM, W6 X 12 MAT'L A36

BILL OF MATERIALS

PROPRIETARY AND CONFIDENTIAL  
 THIS DOCUMENT CONTAINS PROPRIETARY INFORMATION BELONGING TO PROCESS SYSTEMS INTERNATIONAL, INC. OR ITS AFFILIATED COMPANIES AND SHALL BE USED ONLY FOR THE PURPOSE FOR WHICH IT WAS SUPPLIED. IT SHALL NOT BE COPIED, REPRODUCED OR OTHERWISE USED, NOR SHALL SUCH INFORMATION BE FURNISHED IN WHOLE OR IN PART TO OTHERS EXCEPT IN ACCORDANCE WITH THE TERMS OF ANY AGREEMENT UNDER WHICH IT WAS SUPPLIED OR WITH THE PRIOR WRITTEN CONSENT OF PROCESS SYSTEMS INTERNATIONAL, INC. AND SHALL BE RETURNED UPON REQUEST.

DWG NO	DESCRIPTION	DWG NO	DESCRIPTION
	REFERENCE DRAWINGS		

REV	DESCRIPTION	CHKD	DRWN	DATE	DESH
1	ISSUED FOR FABRICATION		PV	2/7/97	0405
0	ISSUED FOR QUOTES		BAR	1/14/96	

UNLESS OTHERWISE SPECIFIED DIMENSIONS ARE IN INCHES  
 TOLERANCES:  
 FRACTIONAL ±  
 ANGULAR/CHAMF 30°-90° BEND ±2°  
 TWO PLACE DECIMAL ±.01  
 THREE PLACE DECIMAL ±.005  
 FINISHED SURFACE RMS  
 BREAK CORNERS 3/16" OUT  
 REMOVE ALL BURRS

DO NOT SCALE THIS DRAWING

USED IN: \_\_\_\_\_

NEXT ASS'Y: \_\_\_\_\_

PROCESS SYSTEMS INTERNATIONAL, INC.  
 20 WALKUP DR WESTBOROUGH, MASSACHUSETTS 01581 USA

TESTING COVERS, 44 X 5000" B.C.  
 FLAT FACE WITH PORT  
 LIGO VACUUM EQUIPMENT

CAD FILE: V0494188  
 SIZE: D  
 DWG NO: V049-4-188  
 REV: 1

SCALE: 1/8" = 1'-0"  
 SHEET: 1 OF 1

NON-COMMERCIAL USE

Feb 08, 1997 - 132637