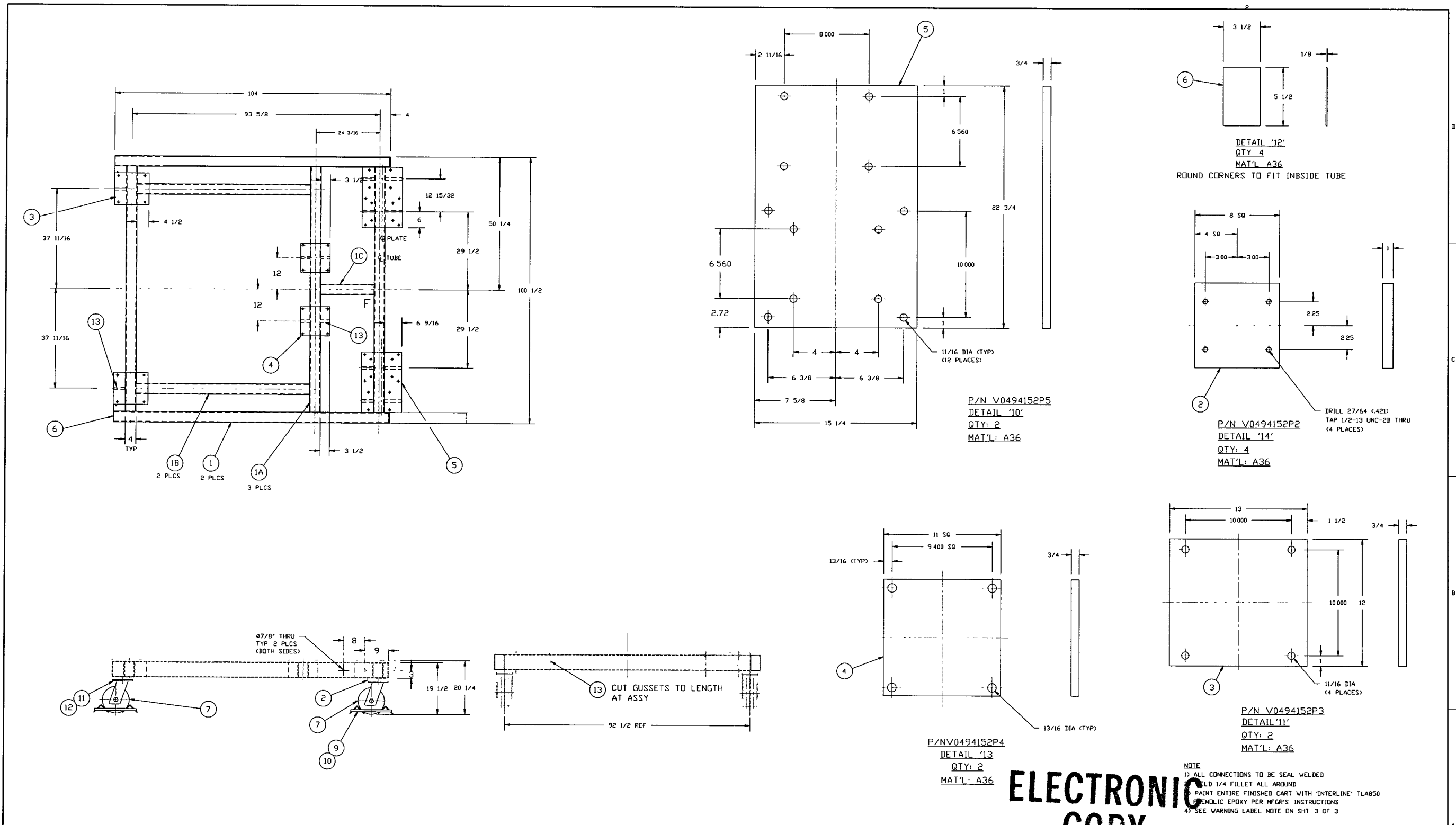


EDUCATION VERSION - NOT FOR COMMERCIAL USE



**ELECTRONIC COPY**

<b>PROPRIETARY AND CONFIDENTIAL</b>				<table border="1"> <tr> <th>SYMBOL</th> <th>CHARACTERISTIC</th> <th>UNLESS OTHERWISE SPECIFIED</th> </tr> <tr> <td><math>\square</math></td> <td>FLATNESS</td> <td>DIMENSIONS ARE IN INCHES</td> </tr> <tr> <td><math>\bigcirc</math></td> <td>CYLINDRICITY</td> <td>TOLERANCES</td> </tr> <tr> <td>//</td> <td>PARALLELISM</td> <td>FRACTIONAL ± 1</td> </tr> <tr> <td><math>\perp</math></td> <td>PERPENDICULARITY</td> <td>ANGULAR ± 1</td> </tr> <tr> <td><math>\angle</math></td> <td>ANGULARITY</td> <td>TWO PLACE DECIMAL ± .05</td> </tr> <tr> <td><math>\oplus</math></td> <td>TRUE POSITION</td> <td>THREE PLACE DECIMAL ± .015</td> </tr> <tr> <td><math>\ominus</math></td> <td>CONCENTRICITY</td> <td>FINISHED SURFACE RMS 6.3</td> </tr> </table>		SYMBOL	CHARACTERISTIC	UNLESS OTHERWISE SPECIFIED	$\square$	FLATNESS	DIMENSIONS ARE IN INCHES	$\bigcirc$	CYLINDRICITY	TOLERANCES	//	PARALLELISM	FRACTIONAL ± 1	$\perp$	PERPENDICULARITY	ANGULAR ± 1	$\angle$	ANGULARITY	TWO PLACE DECIMAL ± .05	$\oplus$	TRUE POSITION	THREE PLACE DECIMAL ± .015	$\ominus$	CONCENTRICITY	FINISHED SURFACE RMS 6.3	<p>DO NOT SCALE THIS DRAWING</p> <p>USED ON</p> <p>NEXT ASS'Y:</p>	
SYMBOL	CHARACTERISTIC	UNLESS OTHERWISE SPECIFIED																													
$\square$	FLATNESS	DIMENSIONS ARE IN INCHES																													
$\bigcirc$	CYLINDRICITY	TOLERANCES																													
//	PARALLELISM	FRACTIONAL ± 1																													
$\perp$	PERPENDICULARITY	ANGULAR ± 1																													
$\angle$	ANGULARITY	TWO PLACE DECIMAL ± .05																													
$\oplus$	TRUE POSITION	THREE PLACE DECIMAL ± .015																													
$\ominus$	CONCENTRICITY	FINISHED SURFACE RMS 6.3																													
<p>THIS DOCUMENT CONTAINS PROPRIETARY INFORMATION BELONGING TO PROCESS SYSTEMS INTERNATIONAL, INC OR ITS AFFILIATED COMPANIES AND SHALL BE USED ONLY FOR THE PURPOSE FOR WHICH IT WAS SUPPLIED. IT SHALL NOT BE COPIED, REPRODUCED OR OTHERWISE USED, NOR SHALL SUCH INFORMATION BE FURNISHED IN WHOLE OR IN PART TO OTHERS EXCEPT IN ACCORDANCE WITH THE TERMS OF ANY AGREEMENT UNDER WHICH IT WAS SUPPLIED OR WITH THE PRIOR WRITTEN CONSENT OF PROCESS SYSTEMS INTERNATIONAL, INC AND SHALL BE RETURNED UPON REQUEST.</p>		<p>DA 11/22/96 0359</p> <p>REV 0</p>		<p>DA 11/22/96 0359</p> <p>REV 0</p>																											
<p>DWG NO</p> <p>DESCRIPTION</p> <p>REFERENCE DRAWINGS</p>		<p>DWG NO</p> <p>DESCRIPTION</p>		<p>DA 11/22/96 0359</p> <p>REV 0</p>																											
<p>8</p>		<p>7</p>		<p>6</p>																											
<p>5</p>		<p>4</p>		<p>3</p>																											
<p>2</p>		<p>1</p>		<p>0</p>																											

LIGO-D990304-00-V

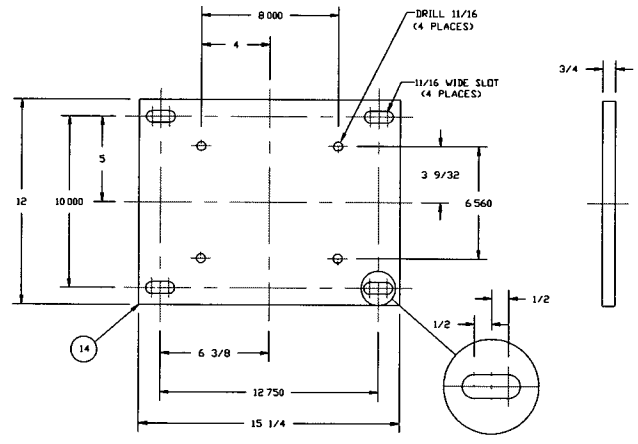
**PROCESS SYSTEMS INTERNATIONAL, INC.**  
20 WALKUP DR WESTBOROUGH, MASSACHUSETTS 01581 USA

**BSC WASH CART (LOWER)**  
LIGO VACUUM EQUIPMENT

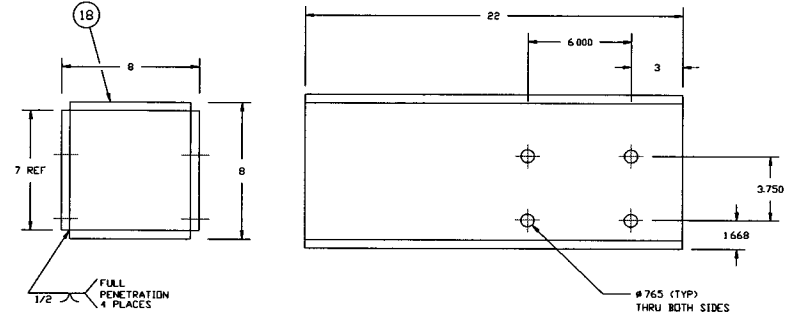
CAD FILE: 4152S1    SIZE: D    DWG NO: V049-4-152    REV: 0

SCALE: 1/16x    SHEET: 1 OF 3

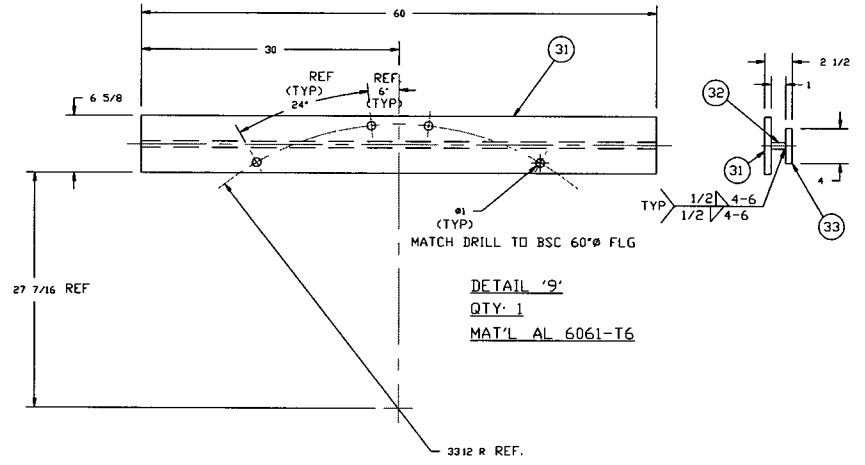
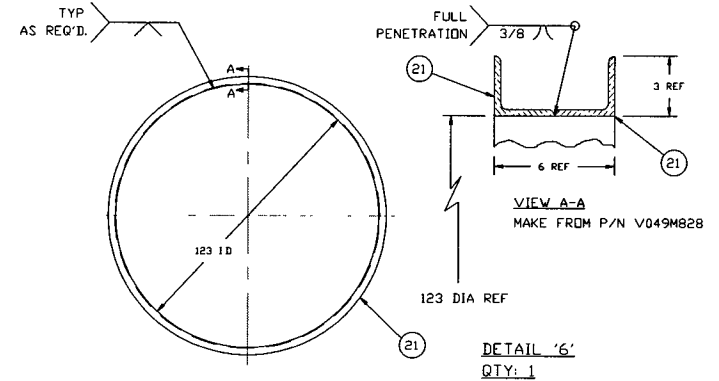
EDUCATION VERSION - NOT FOR COMMERCIAL USE



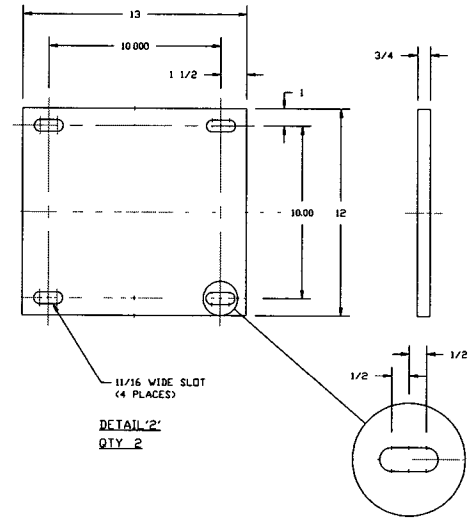
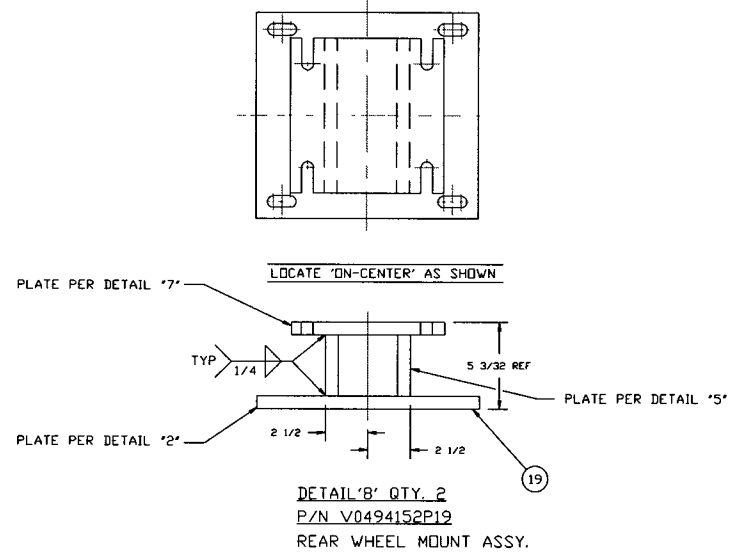
P/N V0494152P14  
DETAIL '1'  
QTY: 2  
MAT'L 304 SST



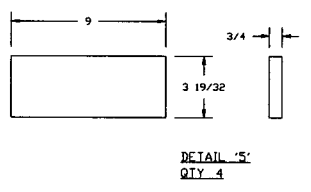
SEE DETAIL '15' SHT 3  
DETAIL '4'  
QTY: 4



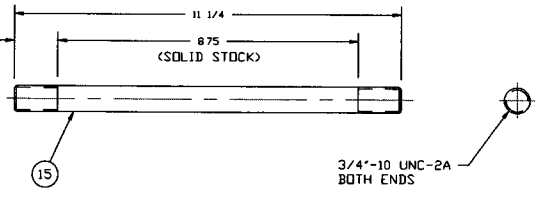
DETAIL '9'  
QTY: 1  
MAT'L AL 6061-T6



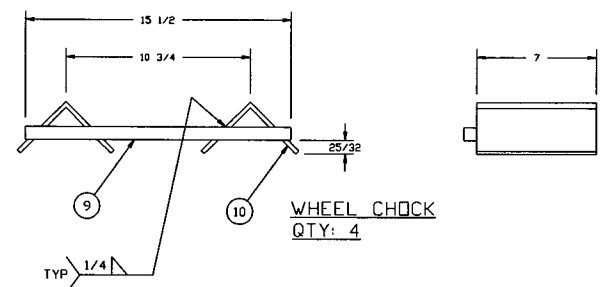
DETAIL '2'  
QTY: 2



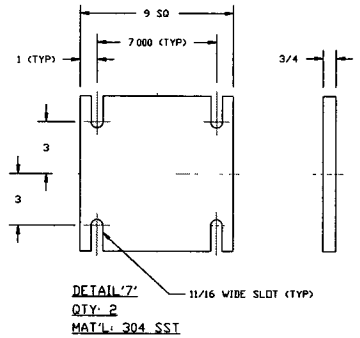
DETAIL '5'  
QTY: 4



P/N V0494152P15  
DETAIL '3'  
QTY: 16  
MAT'L: 304 SST



WHEEL CHECK  
QTY: 4



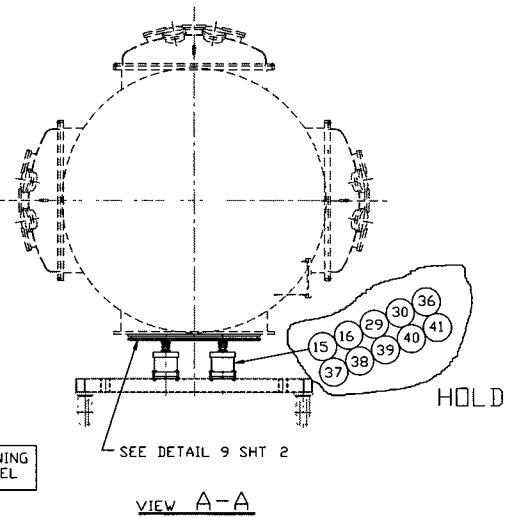
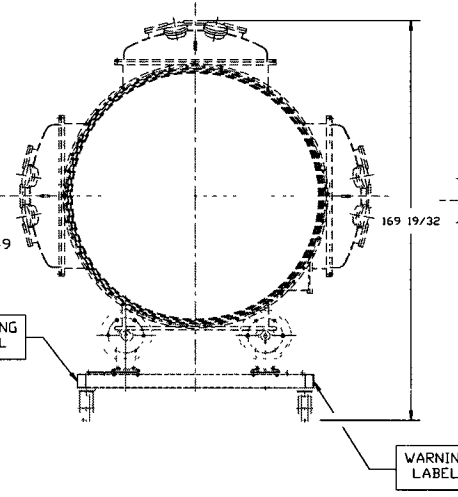
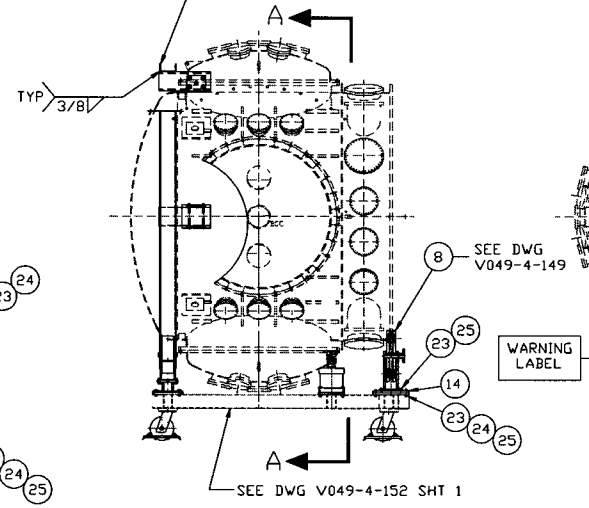
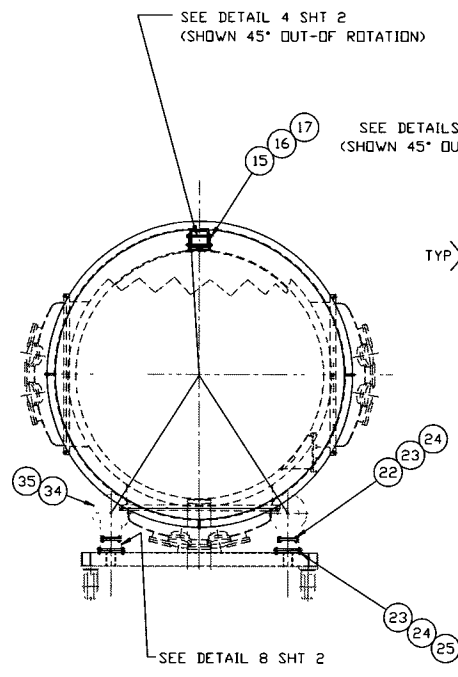
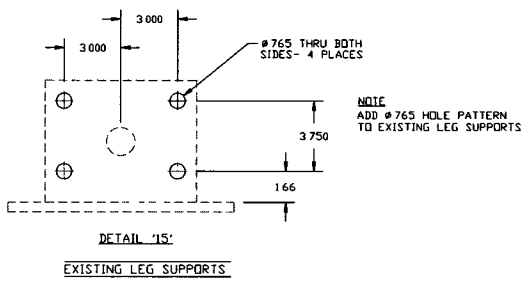
DETAIL '7'  
QTY: 2  
MAT'L: 304 SST

**ELECTRONIC COPY**

PROCESS SYSTEMS INTERNATIONAL INC. 20 WALKUP DR. WESTBOROUGH, MASSACHUSETTS 01581 USA			
BSC WASH CART (LOWER)			
LIGD VACUUM EQUIPMENT			
CAD FILE 415252	SIZE D	REV. NO. V049-4-152	REV 0
SCALE 1/16x	SHEET 2 OF 3		

JUL 15, 1996 - 18-1957

EDUCATION VERSION - NOT FOR COMMERCIAL USE



NOTE:  
SHOP TO PROVIDE WARNING LABELS ON 2 SIDES  
AS SHOWN ABOVE  
LETTERS TO BE RED AGAINST THE WHITE FRAME

WARNING MAX LOAD CAPACITY 10,000 LBS  
ALL WHEELS TO BE SECURED WHEN LOAD IS  
BEING ROTATED OR LIFTED

**ELECTRONIC  
COPY**

PROCESS SYSTEMS INTERNATIONAL INC. 20 WALKUP DR. WESTBOROUGH, MASSACHUSETTS 01581 USA			
BSC WASH CART (LOWER)			
LIGQ VACUUM EQUIPMENT			
CAD FILE 415053	SIZE D	DWG NO. V049-4-152	REV 0
SCALE 1/16x	SHEET 3 OF 3		

JUN 15, 1996 - 104957