

ITEM	PART NUMBER	SUFFIX	QTY	UM	DESCRIPTION	MAT'L
1			2	EA	DETAIL-27, MOUNT PLATE	A36
2			2	EA	PLATE, STL, A36, 1 1/2"x62"x96" LG	A36
3			2	EA	DETAIL-19, GUSSET PLATE	A36
4			2	EA	DETAIL-15, GUIDE RAIL	A36
5			8	EA	PLATE, STL, A36, 1"x20"x60" LG	A36
6			1	EA	DETAIL-8, SADDLE PLATE	A36
7			1	EA	DETAIL-9, SADDLE PLATE	A36
8			1	EA	DETAIL-10, SADDLE PLATE	A36
9			1	EA	DETAIL-11, SADDLE PLATE	A36
10			1	EA	DETAIL-12, SADDLE PLATE	A36
11			2	EA	DETAIL-13, SADDLE PLATE	A36
12			2	EA	DETAIL-14, SADDLE PLATE	A36
13			1	EA	DETAIL-20, SADDLE SUPPORT	A36
14			1	EA	DETAIL-21, SADDLE SUPPORT	A36
15			1	EA	DETAIL-22, SADDLE SUPPORT	A36
16			1	EA	DETAIL-23, SADDLE SUPPORT	A36
17			2	EA	DETAIL-24, SADDLE SUPPORT	A36
18			1	EA	DETAIL-25, SADDLE SUPPORT	A36
19			1	EA	DETAIL-26, SADDLE SUPPORT	A36
20			52	FT	WF, A36, W8x40#	A36
21A			23	FT	TUBE, 1/2" x 4" x 8" x 58 1/8" LG	A500
21B			3	FT	TUBE, 1/2" x 4" x 8" x 49 9/16" LG	A500
22			2	EA	DETAIL-28, INTERFACE PLATE	5083
23			28	FT	FB, STL, A36, 1"x8"	A36
24			24	EA	T-NUT 7/8"-9 UNC (REID #11-13)	
25			24	EA	BOLT, MACHINE, 7/8"-9 UNC x 3" LG	A36
26			24	EA	WASHER, FLAT, 7/8"	CS
27			30	EA	BOLT, FLAT HD 3/8"-16 UNC x 1 1/2" LG	A563

**ELECTRONIC COPY**

LIGO-D990300-00-V

FOR COMMERCIAL USE

DWG NO.	DESCRIPTION	DWG NO.	DESCRIPTION
8	REFERENCE DRAWINGS	7	
6		5	
4		3	
2		1	

UNLESS OTHERWISE SPECIFIED DIMENSIONS ARE IN INCHES  
 TOLERANCES: FRACTIONAL ± .1 ANGULAR ± .5° ± .30° BEND ± .2° TWO PLACE DECIMAL ± .01 THREE PLACE DECIMAL ± .005 FINISHED SURFACE RING BREAK CORNERS IN OUT REMOVE ALL BURRS

DO NOT SCALE THIS DRAWING 0 RELEASED FOR FAB

USED ON \_\_\_\_\_ REV \_\_\_\_\_ DATE \_\_\_\_\_

NEXT ASS'Y: \_\_\_\_\_

ISSUE DESCRIPTION \_\_\_\_\_

CHKD \_\_\_\_\_ PV 7/8/96

DATE \_\_\_\_\_

SCALE 3/8"=1'-0"

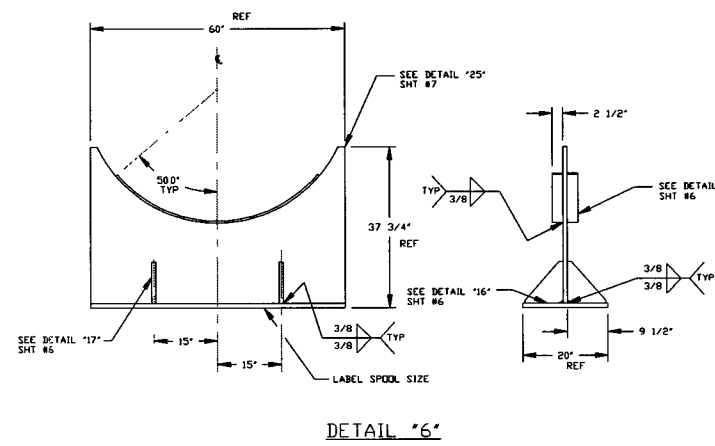
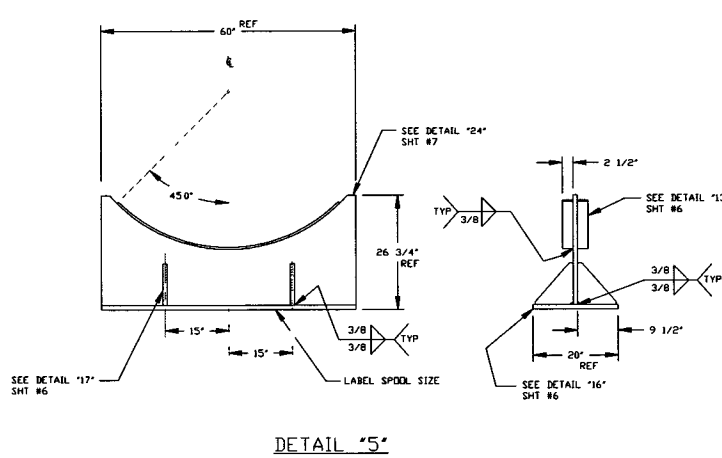
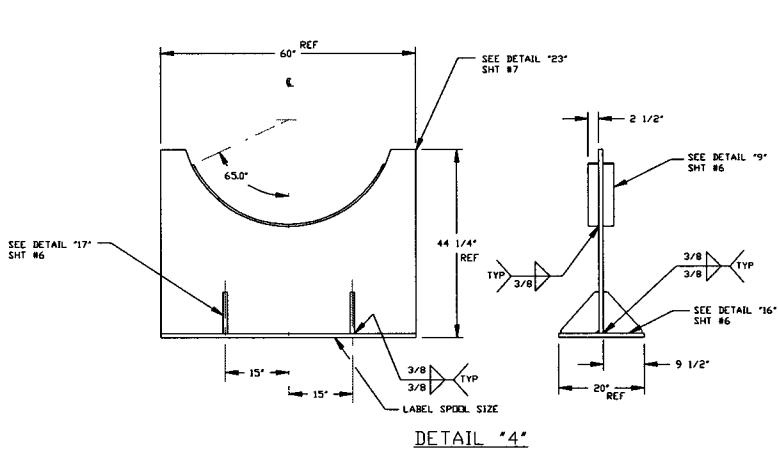
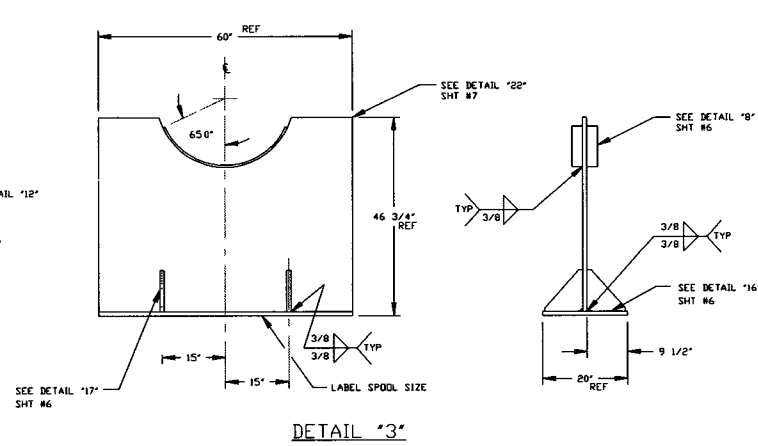
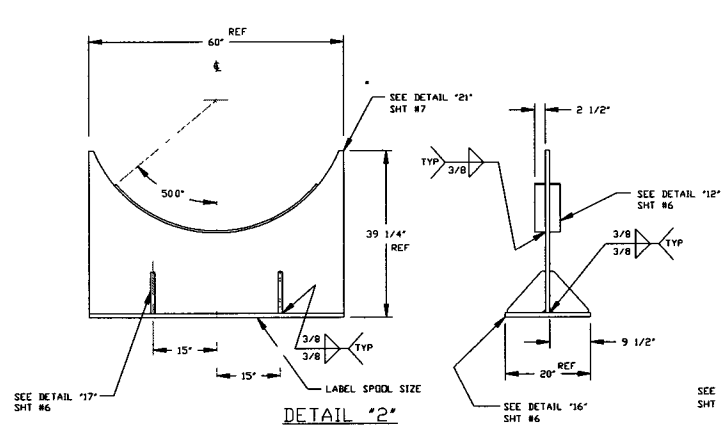
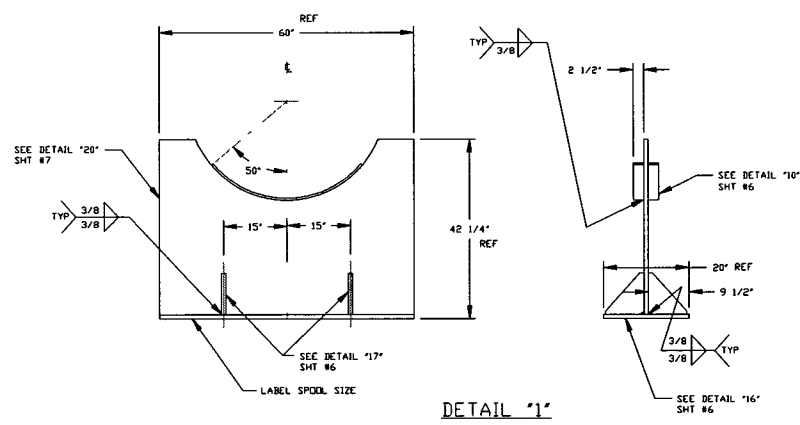
SHEET 1 OF 7

PROCESS SYSTEMS INTERNATIONAL INC.  
 20 WALKUP DR WESTBOROUGH MASSACHUSETTS 01581 USA

CRYO PUMP/SPDOL FIXTURE  
 44 5/8" ID 48 1/4" ID  
 60 1/2" ID 72 1/4" ID

CAB FILE 408551  
 SIZE B  
 DWG NO. V049-4-085  
 REV 0

JUN 26 1996 10:55:00



**ELECTRONIC  
COPY**

<b>PROCESS SYSTEMS INTERNATIONAL INC.</b> 20 WALKUP DR. WESTBOROUGH, MASSACHUSETTS 01581 USA			
<b>CRYOPUMP/SPOOL FIXTURE CENTER SUPPORTS</b>			
CAD FILE 408552	SIZE D	DWG NO. V049-4-085	REV 0
SCALE 3/4"=1'-0"	SHEET 2 OF 7		JUN 06, 1996 - 12:37:08

ELECTRONIC VERSION - NOT FOR COMMERCIAL USE

8

7

6

5

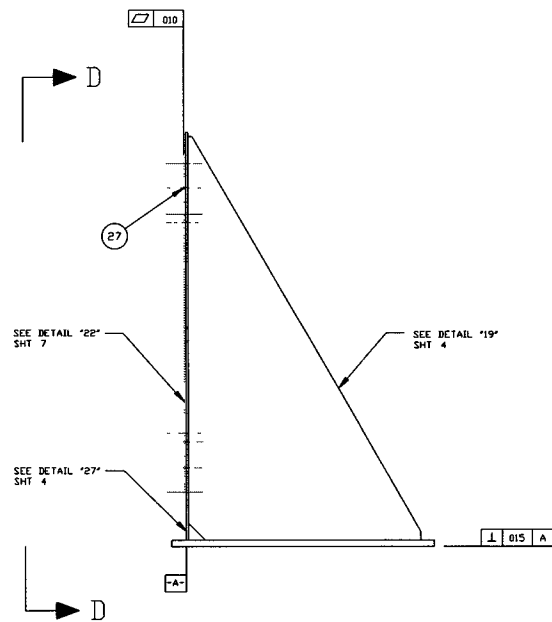
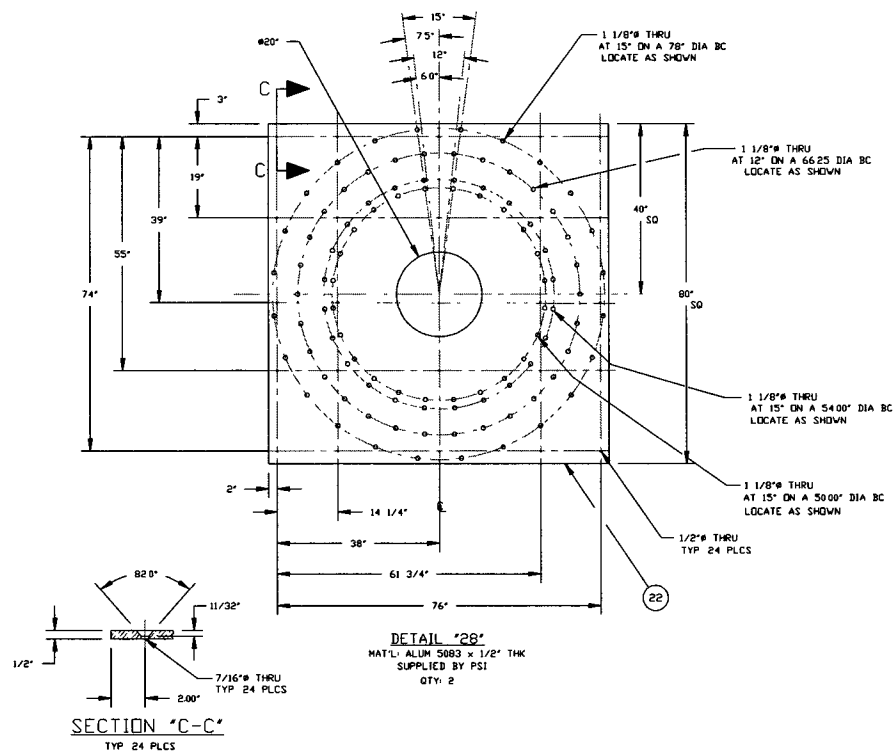
4

3

2

1

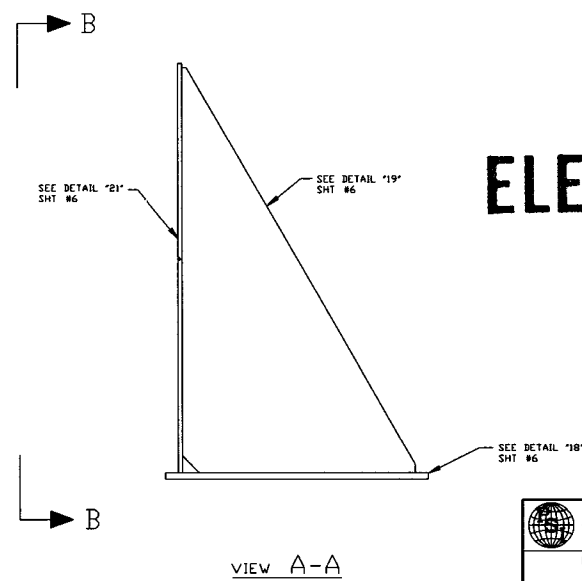
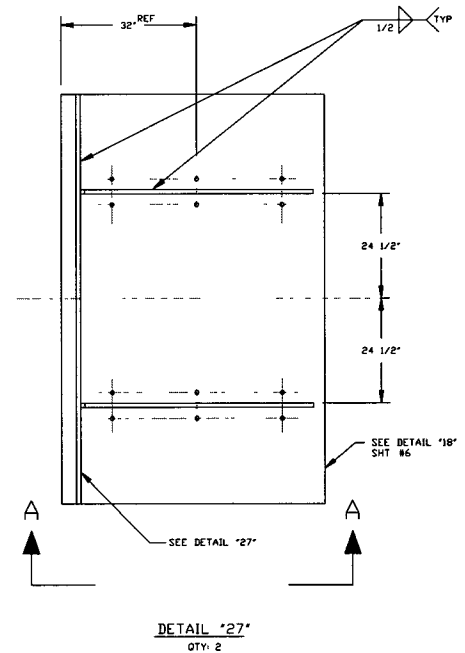
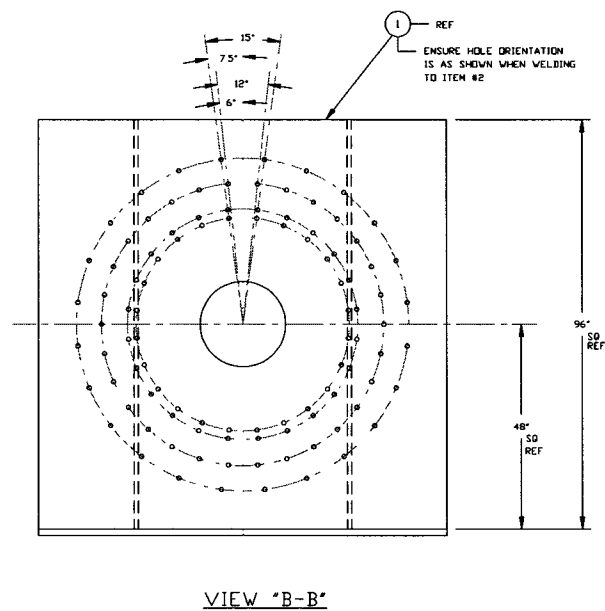
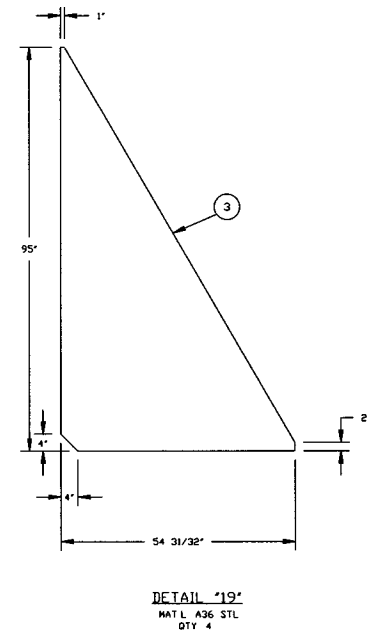
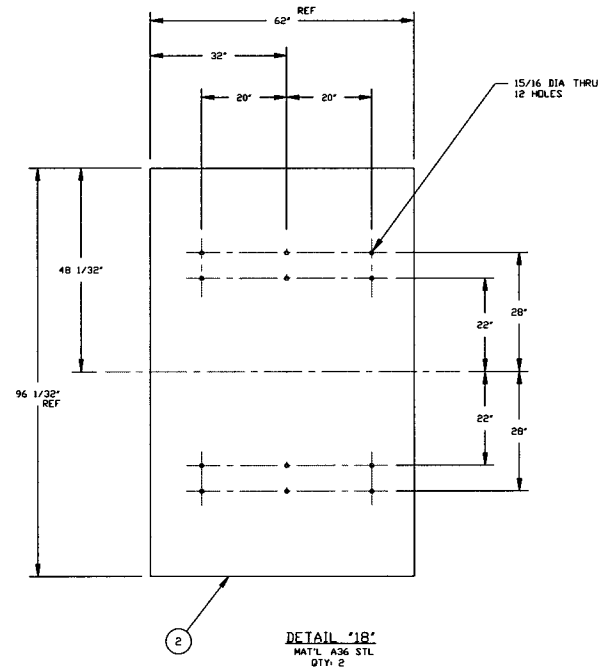
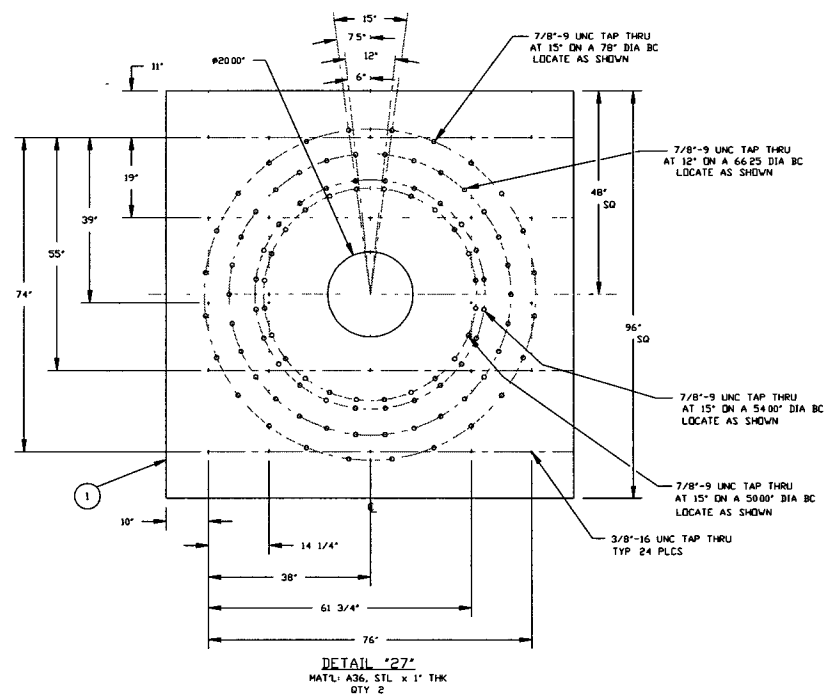
A



**ELECTRONIC COPY**

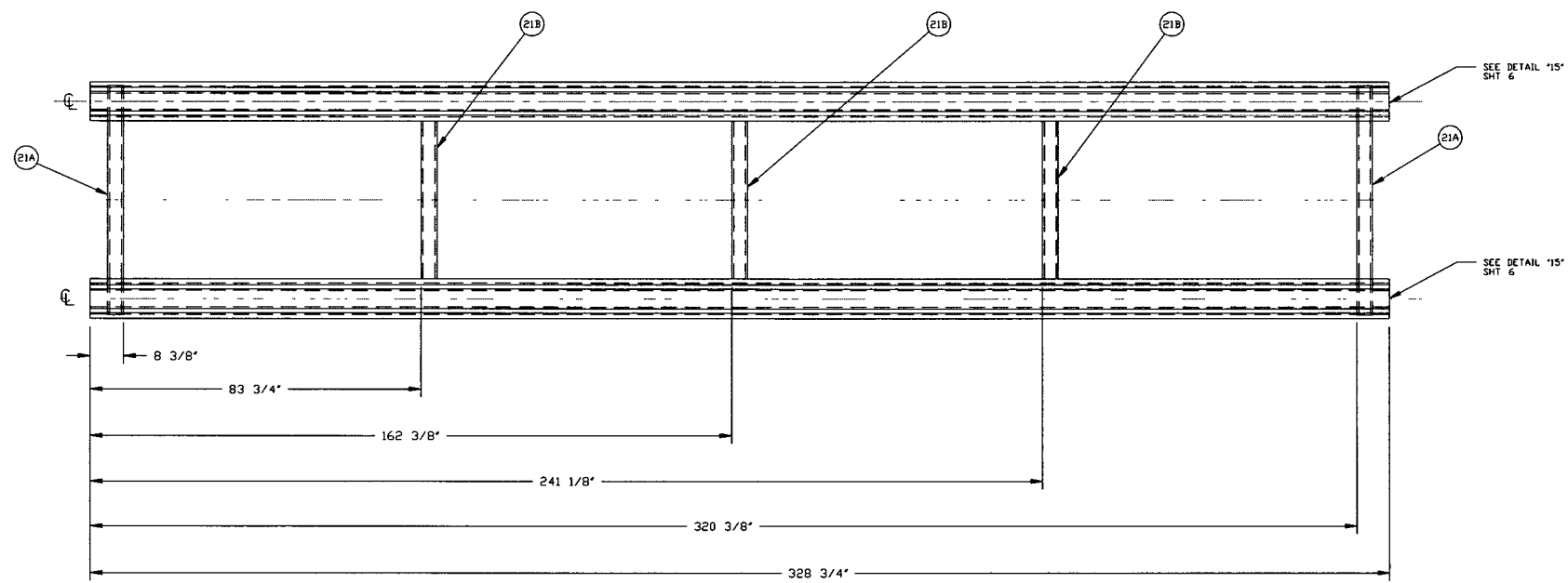
<b>PROCESS SYSTEMS INTERNATIONAL INC.</b> <small>20 WALKUP DR WESTBOROUGH MASSACHUSETTS 01581 USA</small>			
<b>CRYOPUMP/SPOOL FIXTURE WELDING BRACKET</b>			
<small>CAD FILE</small> 408555	<small>SIZE</small> D	<small>DWG NO</small> V049-4-085	<small>REV</small> 0
<small>SCALE</small> 3/4"=1'-0"	<small>SHEET</small> 3 OF 7	<small>JUN 06, 1996 - 13:03:49</small>	

REPRODUCTION PROHIBITED - NOT FOR COMMERCIAL USE

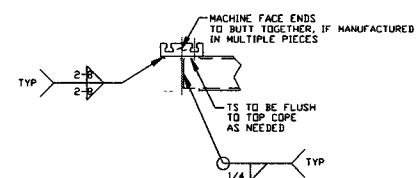
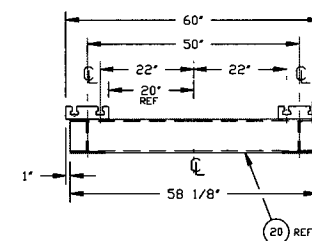
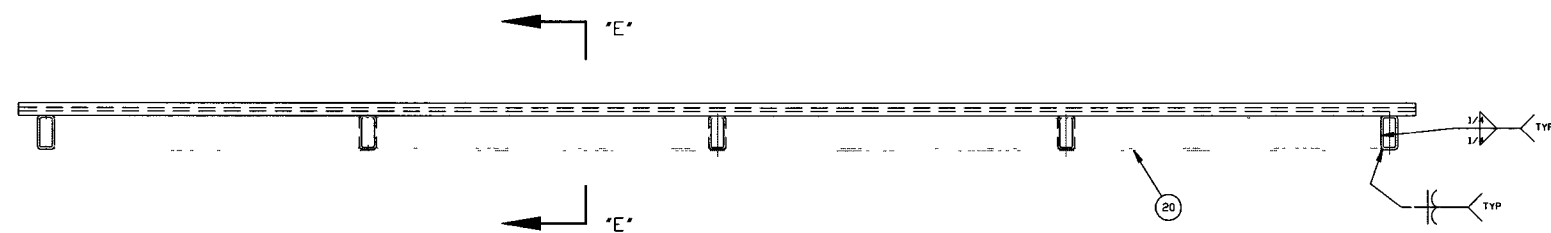


**ELECTRONIC  
COPY**

<b>PROCESS SYSTEMS INTERNATIONAL INC.</b> <small>20 WALKUP DR WESTBOROUGH MASSACHUSETTS 01581 USA</small>			
<b>CRYOPUMP/SPOOL FIXTURE WELDING BRACKET</b>			
CAD FILE 40BSS4	SIZE D	DWG NO V049-4-085	REV 0
SCALE 3/4"=1'-0"	SHEET 4	OF 7	DATE 12/13/99



DETAIL - 29



SECTION "E-E"  
TYP 6 PLCS

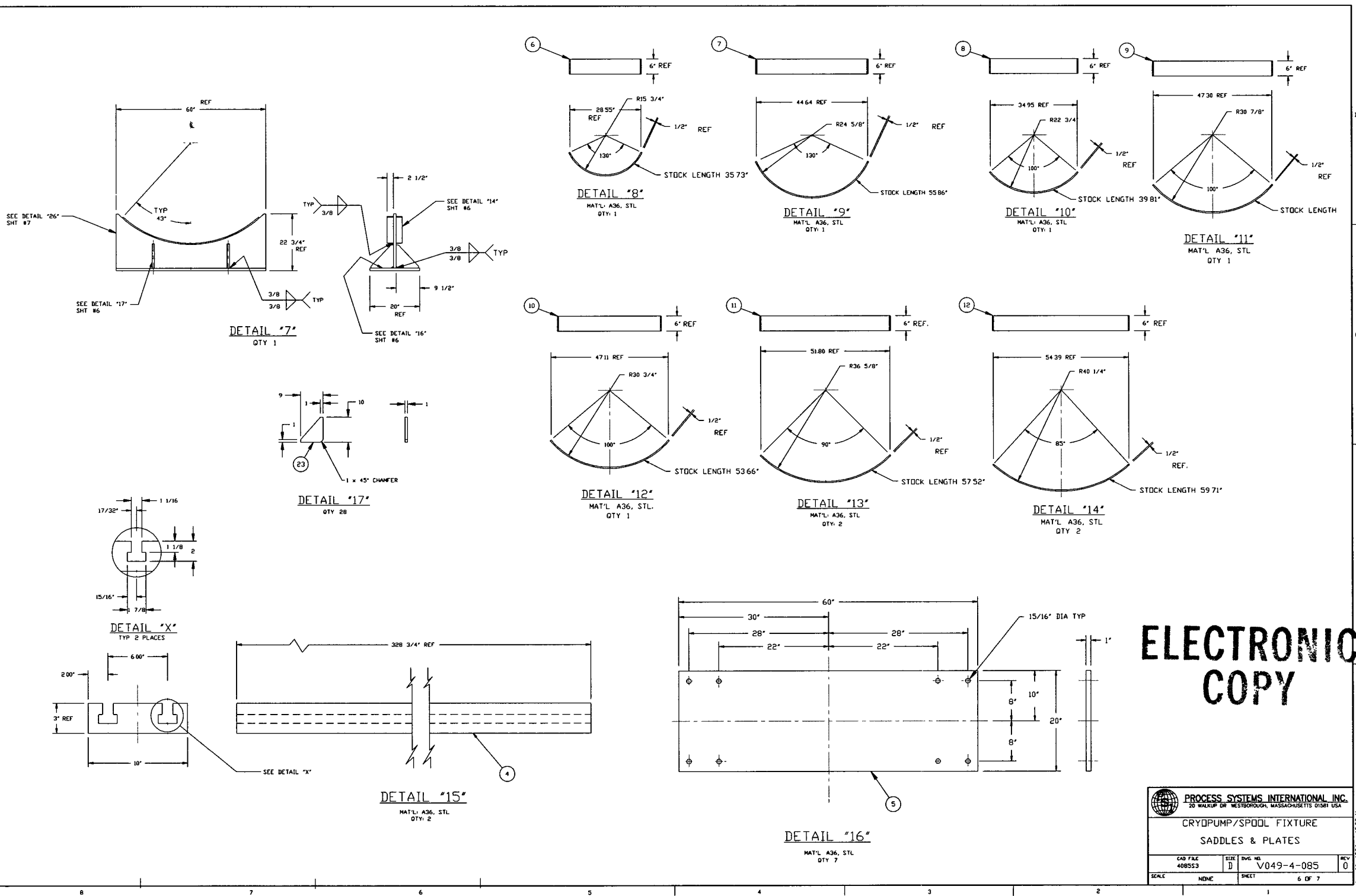
**ELECTRONIC  
COPY**

<b>PROCESS SYSTEMS INTERNATIONAL INC.</b> <small>20 WALKUP DR WESTBOROUGH, MASSACHUSETTS 01581 USA</small>			
<b>CRYO PUMP/SPool FIXTURE BASE WELDMENT</b>			
CAD FILE 408556	SIZE D	DWG NO. V049-4-085	REV 0
SCALE 3/4"=1'-0"	SHEET 5 OF 7		

EDUCATION VERSION - NOT FOR COMMERCIAL USE

8 7 6 5 4 3 2 1

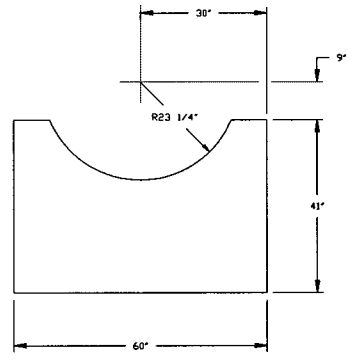
EDUCATION VERSION - NOT FOR COMMERCIAL USE



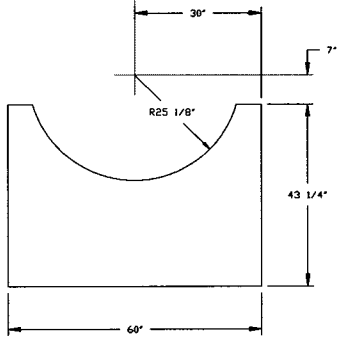
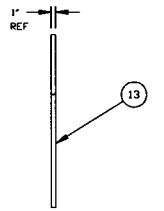
**ELECTRONIC COPY**

<b>PROCESS SYSTEMS INTERNATIONAL INC.</b> <small>30 WALKUP DR WESTBOROUGH, MASSACHUSETTS 01581 USA</small>			
<b>CRYOPUMP/SPOOL FIXTURE</b> <b>SADDLES &amp; PLATES</b>			
CAD FILE 408553	SIZE D	ENG. NO. V049-4-085	REV 0
SCALE NONE	SHEET 6 OF 7		DATE 12/28/11

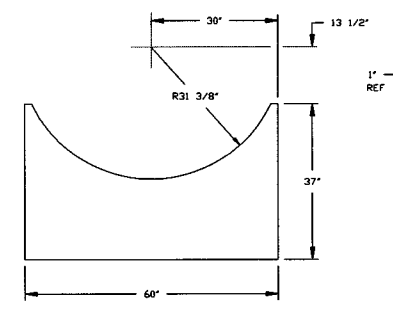
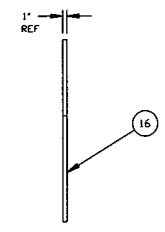
EDUCATION VERSION - NOT FOR COMMERCIAL USE



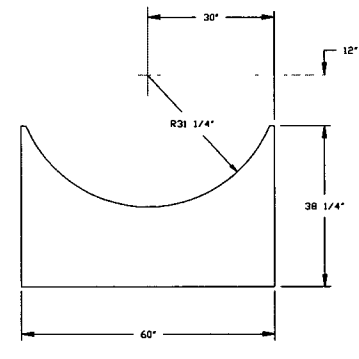
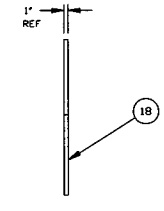
**DETAIL '20'**  
MAT'L: A36, STL  
QTY: 1



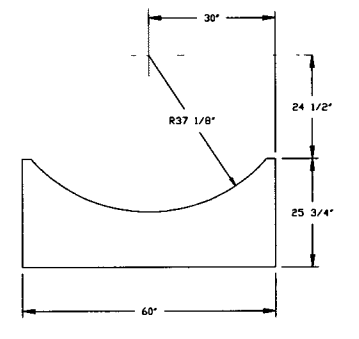
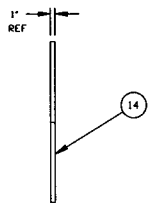
**DETAIL '23'**  
MAT'L: A36, STL  
QTY: 1



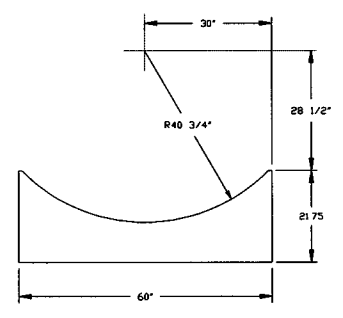
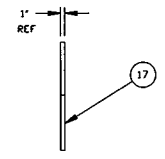
**DETAIL '25'**  
MAT'L: A36, STL  
QTY: 1



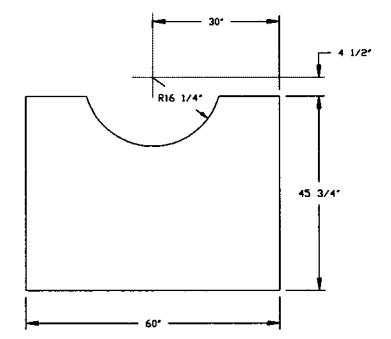
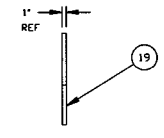
**DETAIL '21'**  
MAT'L: A36, STL  
QTY: 1



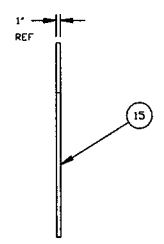
**DETAIL '24'**  
MAT'L: A36, STL  
QTY: 2



**DETAIL '26'**  
MAT'L: A36, STL  
QTY: 2



**DETAIL '22'**  
MAT'L: A36, STL  
QTY: 1



**ELECTRONIC  
COPY**

<b>PROCESS SYSTEMS INTERNATIONAL INC.</b> 20 WALKUP DR. WESTBOROUGH, MASSACHUSETTS 01581 USA			
<b>CRYO PUMP/SPOOL FIXTURE SADDLE DETAILS</b>			
CAD FILE 408557	SIZE D	DWG. NO. V049-4-085	REV 0
SCALE 3/4"=1'-0"	SHEET 7 OF 7		

Jan 06, 1996 - 13:16:37

8 7 6 5 4 3 2 1