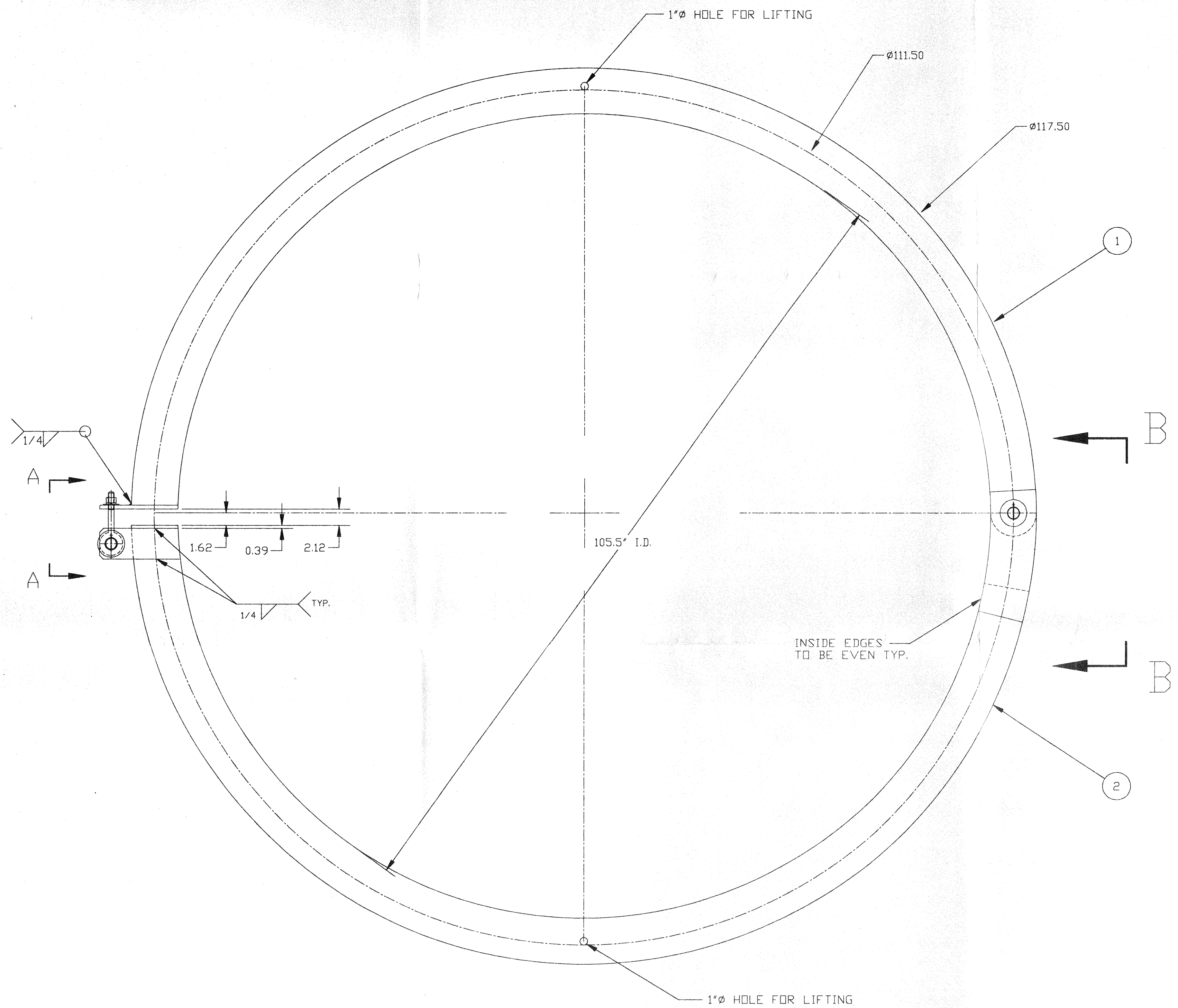
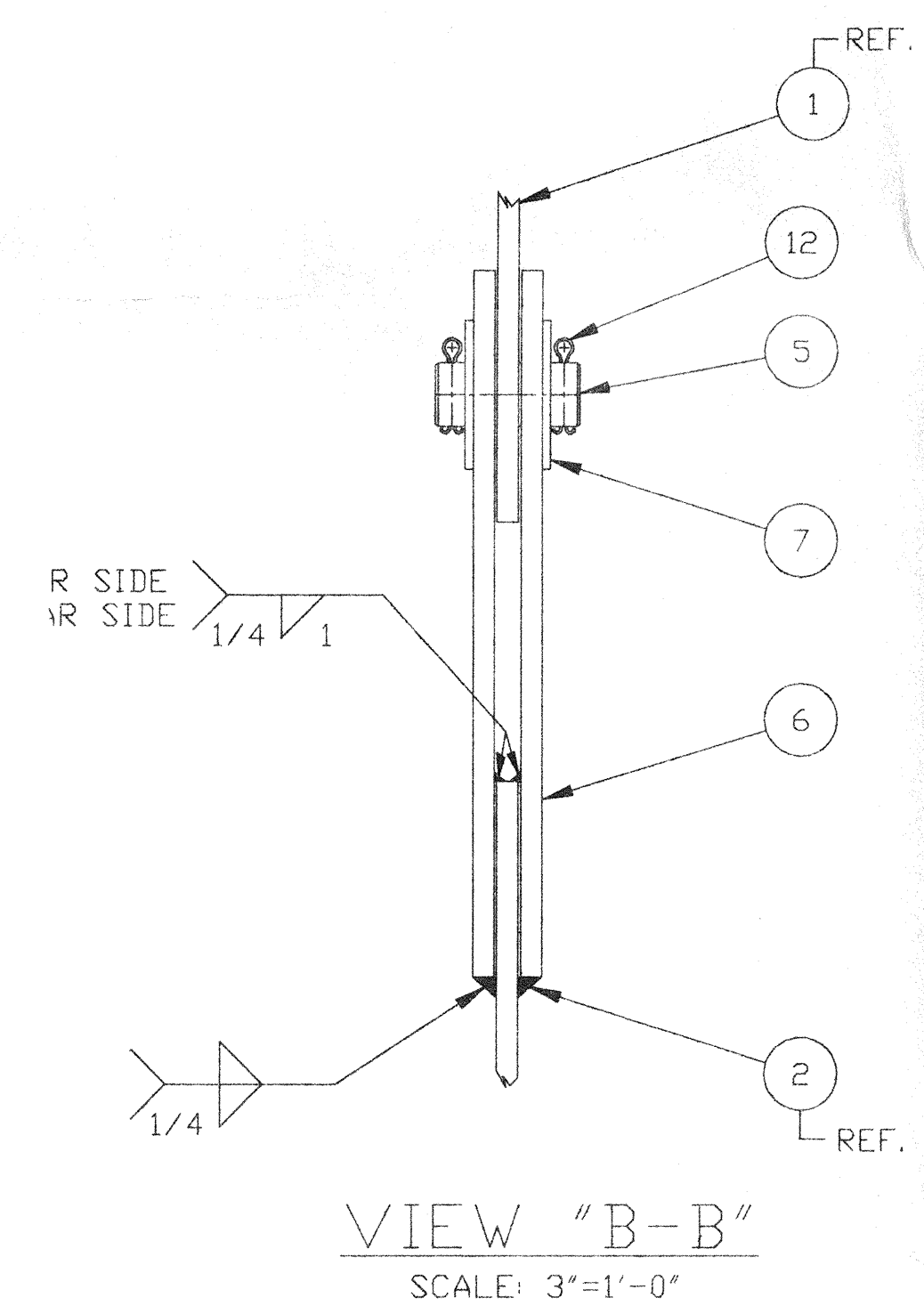


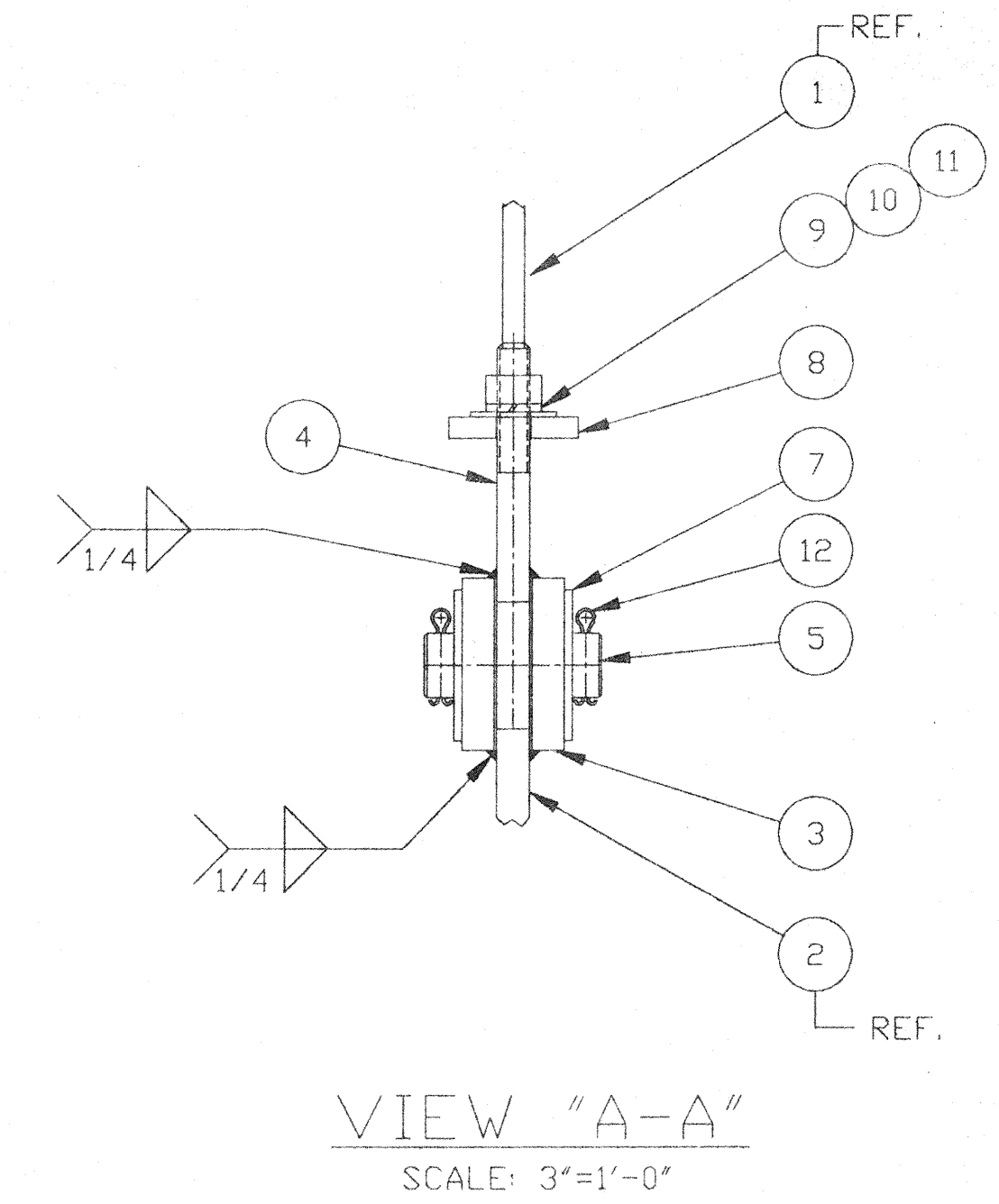
ITEM	PART NUMBER	SUFFIX	QTY	UM	DESCRIPTION
1	V049M074		2	EA	FLAT BAR 1/2x6x20FT 304 A479 ROLLED HW TO 105.5 ID
2			1	EA	FLAT BAR 1/2x6x20FT 304 A479 ROLLED HW TO 105.5 ID
3					MADE FROM DROP OF ITEM (1)
4			1	EA	EYE BOLT MCMASER CARR 3016763
5	C467924		1	FT	ROUND BAR 1 1/2' x 3' LG. 304 A479
6					MADE FROM DROP OF ITEM (1)
7			4	EA	WASHER MCMASER CARR 90108A041
8					MADE FROM DROP OF ITEM (2)
9	C429806		1	EA	FLAT WASHER 3/4 A436 C.S.
10	C439806		1	EA	LOCK WASHER 3/4 A436
11	C109706		1	EA	HEX NUT 3/4 A563
12			2	EA	COTTER PIN 1/4 X 3' C.S.



PLAN VIEW
SCALE: 1 1/2"=1'-0"



VIEW "B-B"
SCALE: 3"=1'-0"

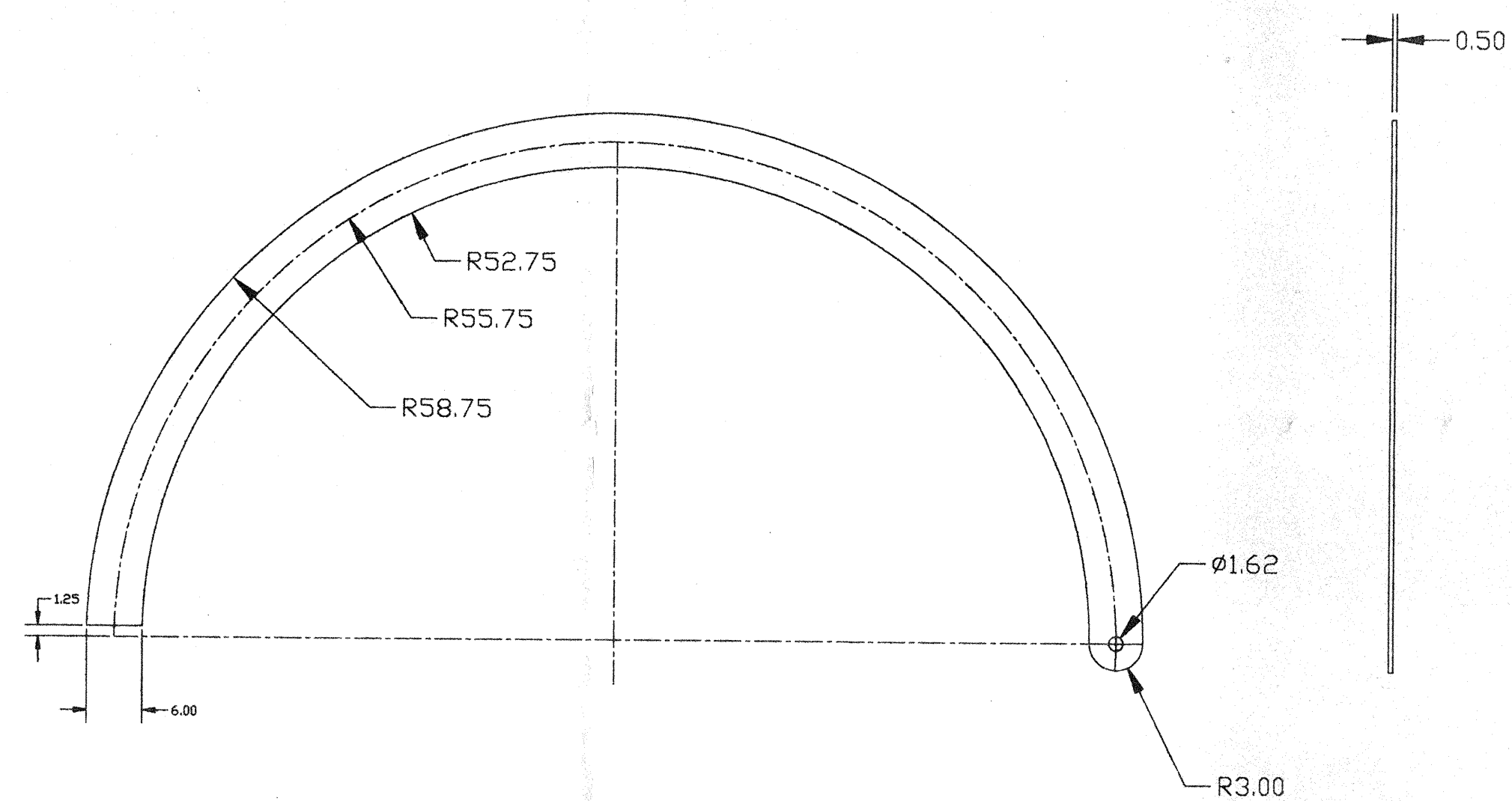


VIEW "A-A"
SCALE: 3"=1'-0"

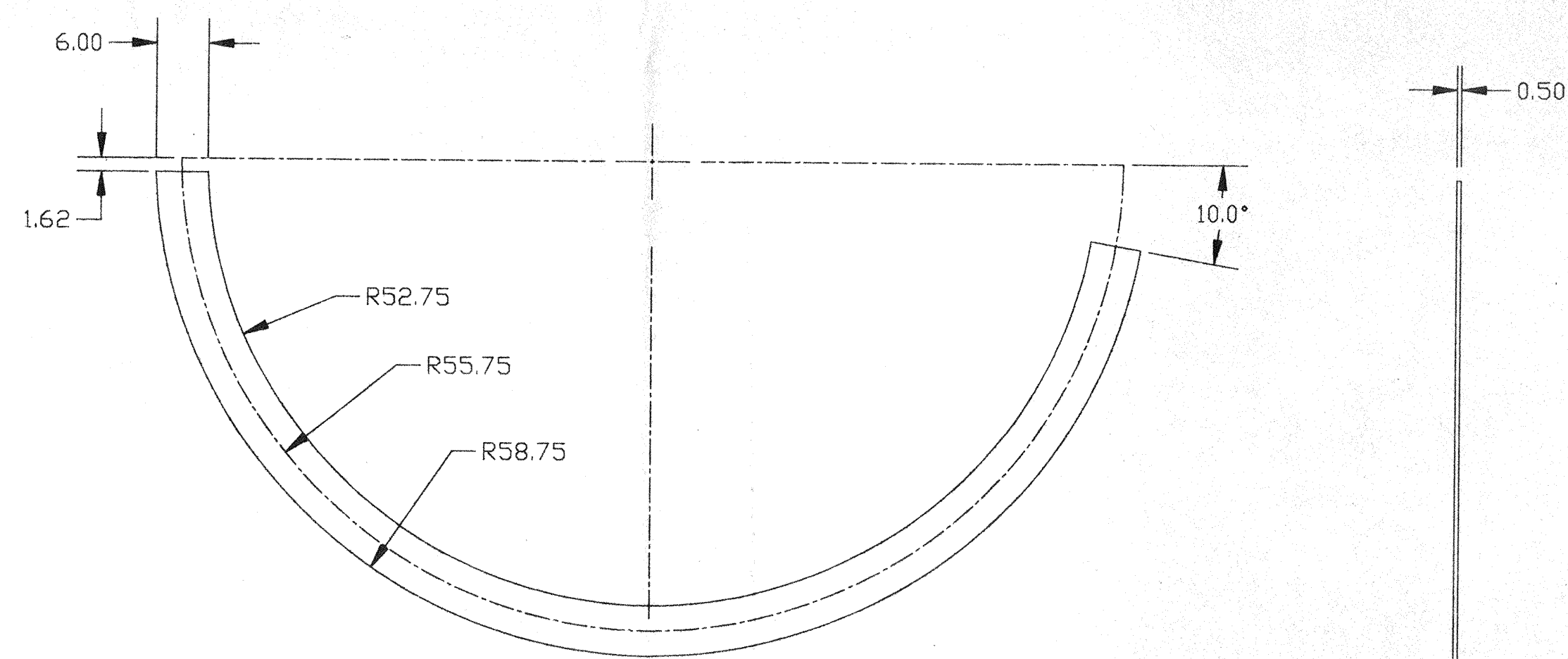
2-REQ'D
D990299-P2-V

PROPRIETARY AND CONFIDENTIAL THIS DOCUMENT CONTAINS PROPRIETARY INFORMATION BELONGING TO PROCESS SYSTEMS INTERNATIONAL, INC. OR ITS AFFILIATED COMPANIES AND SHALL BE USED ONLY FOR THE PURPOSE FOR WHICH IT WAS SUPPLIED. IT SHALL NOT BE COPIED, REPRODUCED OR OTHERWISE USED, NOR SHALL SUCH INFORMATION BE FURNISHED IN WHOLE OR IN PART TO OTHERS EXCEPT IN ACCORDANCE WITH THE TERMS OF ANY AGREEMENT UNDER WHICH IT WAS SUPPLIED OR WITH THE PRIOR WRITTEN CONSENT OF PROCESS SYSTEMS INTERNATIONAL, INC. AND SHALL BE RETURNED UPON REQUEST.				UNLESS OTHERWISE SPECIFIED DIMENSIONS ARE IN INCHES TOLERANCES: FRACTIONAL ± ANGULAR MACH ±0°-30' BEND ±2° TWO PLACE DECIMAL ± .01 THREE PLACE DECIMAL ± .005 FINISHED SURFACE RISKS BREAK CORNERS IN OUT- REMOVE ALL BURRS				P2 RELEASED FOR FABRICATION P1 RELEASED FOR PROTOTYPE FABRICATION REV DESCRIPTION				P.E.C. MA 03/26/96 0097 PV 03/1/96				PROCESS SYSTEMS INTERNATIONAL INC. 20 WALKUP DR. WESTBOROUGH, MASSACHUSETTS 01581 USA EXTERNAL FIXTURE 105.5 I.D. LIGO VACUUM EQUIPMENT			
DWG. NO.		DESCRIPTION		DWG. NO.		DESCRIPTION		CAD FILE		SIZE		DWG. NO.		REV.					
V049-4-001		BEAM SPLITTER CHAMBER ASSY.		4051S1		D		V049-4-051		P2		1 OF 2		1					
REFERENCE DRAWINGS				ISSUE DESCRIPTION				SCALE AS NOTED				SHEET							

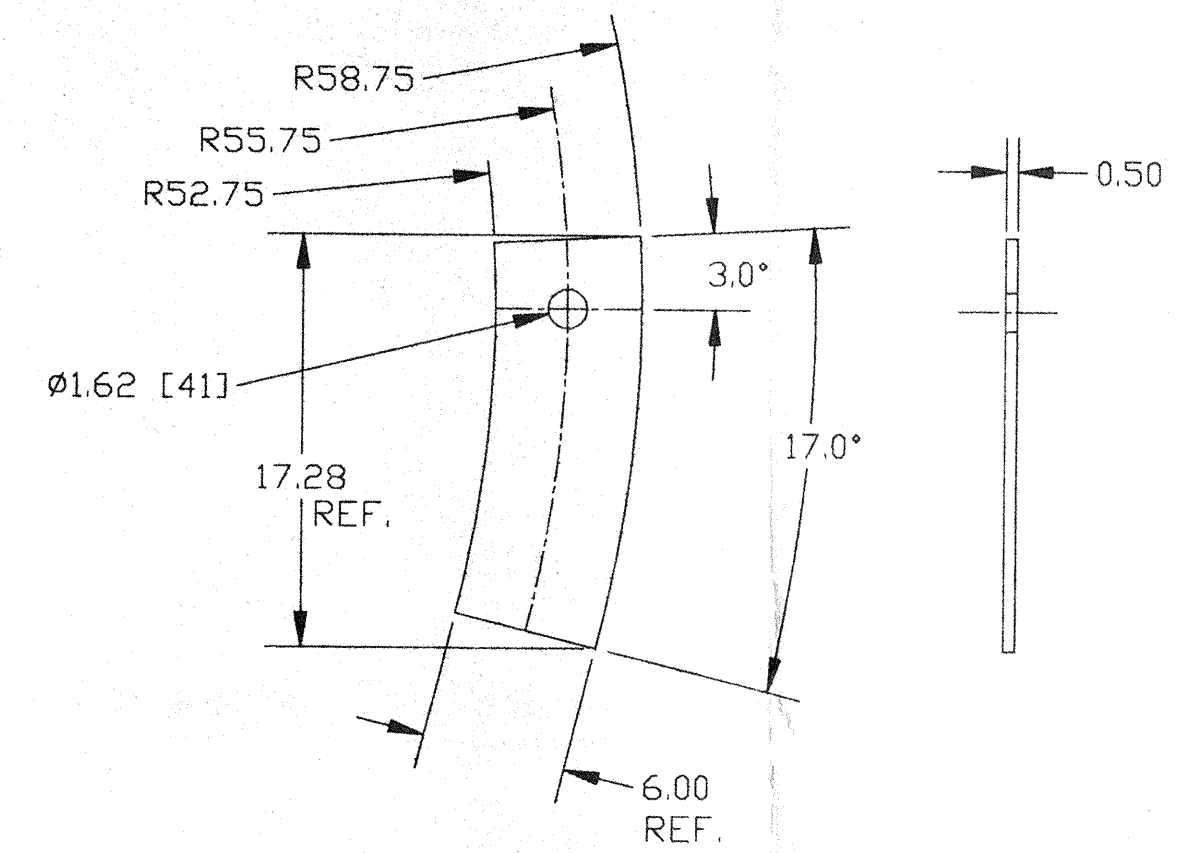
8 7 6 5 4 3 2 1



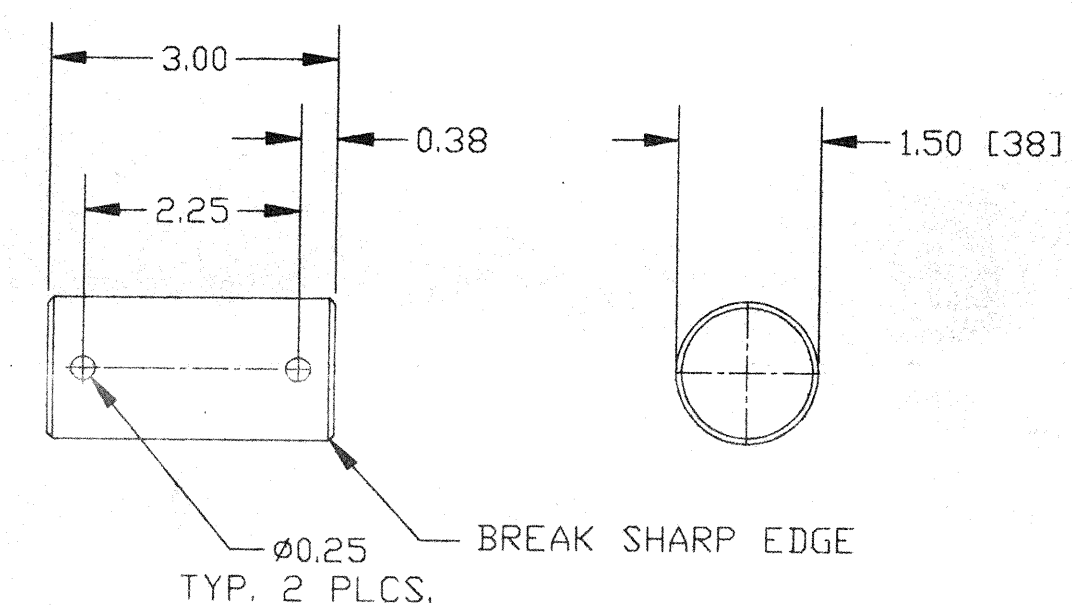
DETAIL OF ITEM 1
SCALE: 3/4"=1'-0"



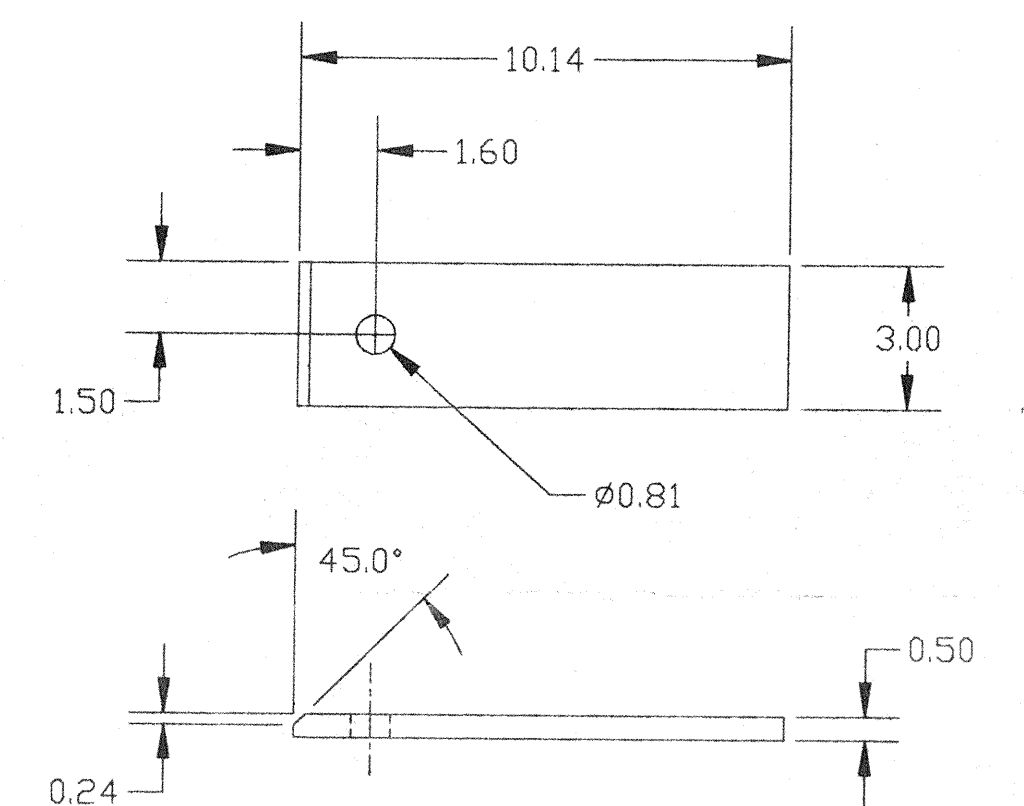
DETAIL OF ITEM 2
SCALE: 3/4"=1'-0"



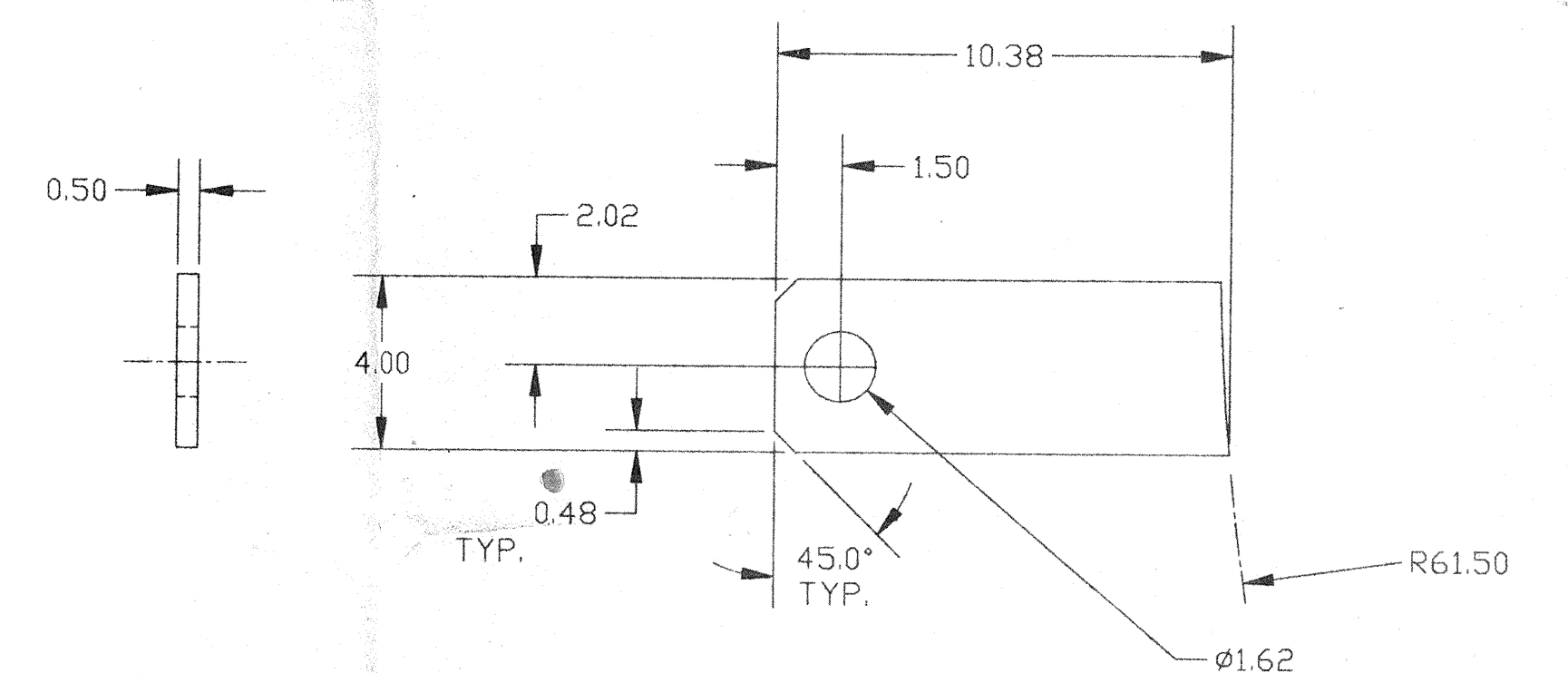
DETAIL OF ITEM 6
SCALE: 1 1/2"=1'-0"
2-REQ'D.



DETAIL OF ITEM 5
SCALE: HALF



DETAIL OF ITEM 8
SCALE: 3"=1'-0"



DETAIL OF ITEM 3
SCALE: 3"=1'-0"
2-REQ'D.

APR 30 1996

D990299-P2-V SEE SHEET 1 FOR REVISIONS

PROCESS SYSTEMS INTERNATIONAL INC.
20 WALKUP DR. WESTBOROUGH, MASSACHUSETTS 01581 USA

EXTERNAL FIXTURE 105.5 I.D.
LIGO VACUUM EQUIPMENT

CAD FILE 4051S2	SIZE D	DWG. NO. V049-4-051	REV. P2
SCALE AS NOTED	SHEET 2 OF 2		

Mar 20 1996 - 1800356