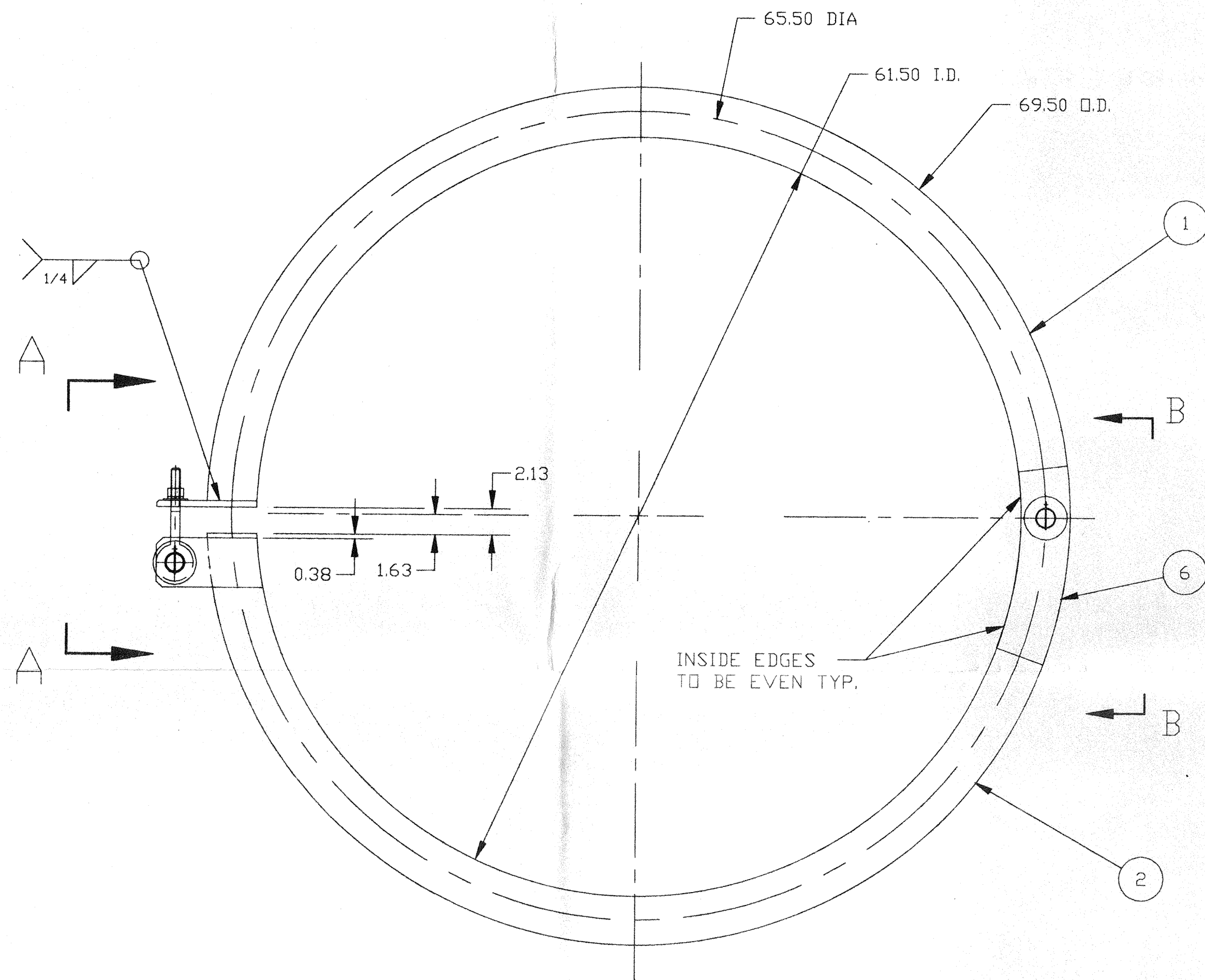
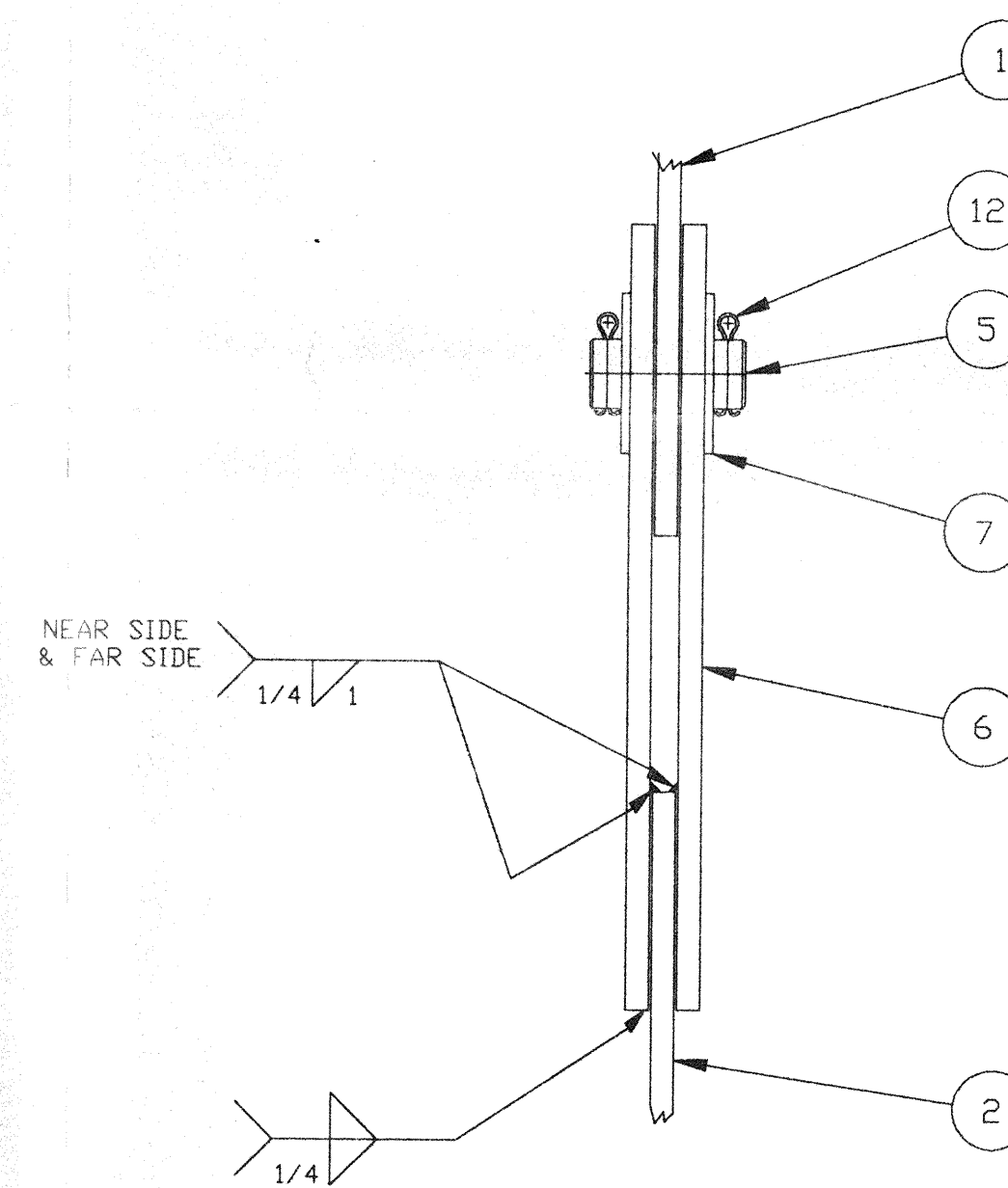


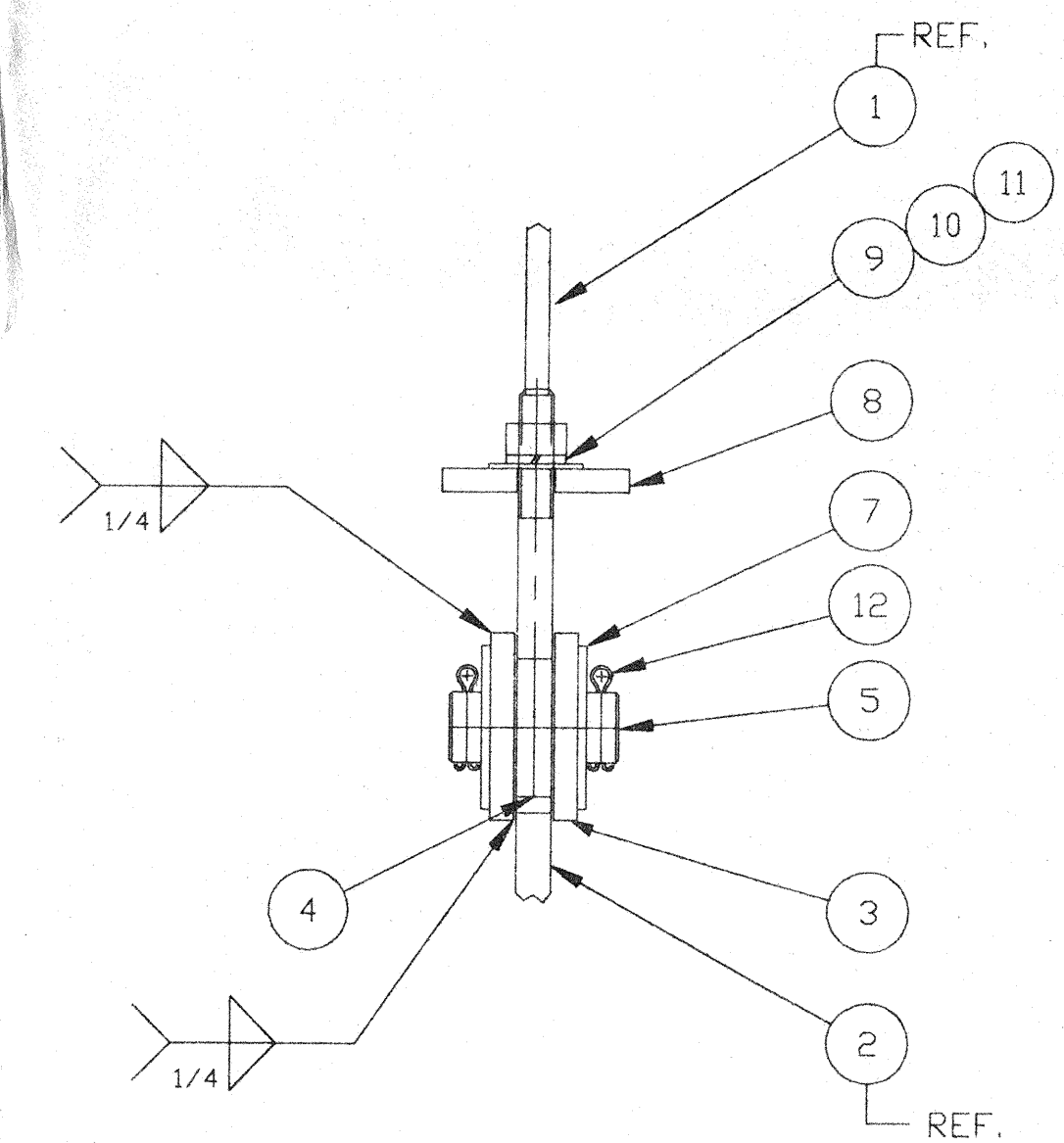
ITEM	PART NUMBER	SUFFIX	QTY	UM	DESCRIPTION
1	V049M075		2	EA	FLAT BAR 1/2X 4X 20FT. 304 A479 ROLLED HARD WAY TO 61 1/2"
2					MADE FROM DF ITEM (1)
3					MADE FROM DROP OF ITEM (1)
4			1	EA	EYE BOLT X 7" LG. MCMASTER CARR 6251K26
5	C467924		1	FT	ROUND BAR 1 1/2" X 3" LG. 304 A479
6					MADE FROM DROP OF ITEM (1)
7			4	EA	1 1/4" WASHER MCMASTER CARR 90108A041
8					MADE FROM DROP OF ITEM (2)
9	429806		1	EA	FLAT WASHER 3/4 A436
10	439806		1	EA	LOCK WASHER 3/4 A436
11	109706		1	EA	HEX NUT 3/4 A563
12			2	EA	COTTER PIN 1/4 X 3" C.S.



PLAN VIEW  
SCALE: 1 1/2"=1'-0"



VIEW "B-B"  
SCALE: 3"=1'-0"



VIEW "A-A"  
SCALE: 3"=1'-0"

PROPRIETARY AND CONFIDENTIAL

THIS DOCUMENT CONTAINS PROPRIETARY INFORMATION BELONGING TO PROCESS SYSTEMS INTERNATIONAL, INC. OR ITS AFFILIATED COMPANIES AND SHALL BE USED ONLY FOR THE PURPOSE FOR WHICH IT WAS SUPPLIED. IT SHALL NOT BE COPIED, REPRODUCED OR OTHERWISE USED, NOR SHALL SUCH INFORMATION BE FURNISHED IN WHOLE OR IN PART TO OTHERS EXCEPT IN ACCORDANCE WITH THE TERMS OF ANY AGREEMENT UNDER WHICH IT WAS SUPPLIED OR WITH THE PRIOR WRITTEN CONSENT OF PROCESS SYSTEMS INTERNATIONAL, INC. AND SHALL BE RETURNED UPON REQUEST.

DWG. NO.	DESCRIPTION	DWG. NO.	DESCRIPTION
V049-4-001	BEAM SPLITTER CHAMBER ASSY.		
REFERENCE DRAWINGS			

UNLESS OTHERWISE SPECIFIED DIMENSIONS ARE IN INCHES  
TOLERANCES:  
FRACTIONAL ±  
ANGULAR/MACH ± 0°-30' BEND ± 2°  
TWO PLACE DECIMAL ± .01  
THREE PLACE DECIMAL ± .005  
FINISHED SURFACE RMS  
BREAK CORNERS IN  
DUTY  
REMOVE ALL BURRS

DO NOT SCALE THIS DRAWING

USED ON:

NEXT ASSY:

REV	DESCRIPTION	CHKD	DRWN	DATE	DETD
P2	RELEASED FOR FABRICATION			03/26/96	0097
P1	RELEASED FOR PROTOTYPE FABRICATION			03/18/96	

APR 30 1996

2-REQ'D

D990298-P2-V

**PROCESS SYSTEMS INTERNATIONAL, INC.**  
20 WALKUP DR. WESTBOROUGH, MASSACHUSETTS 01581 USA

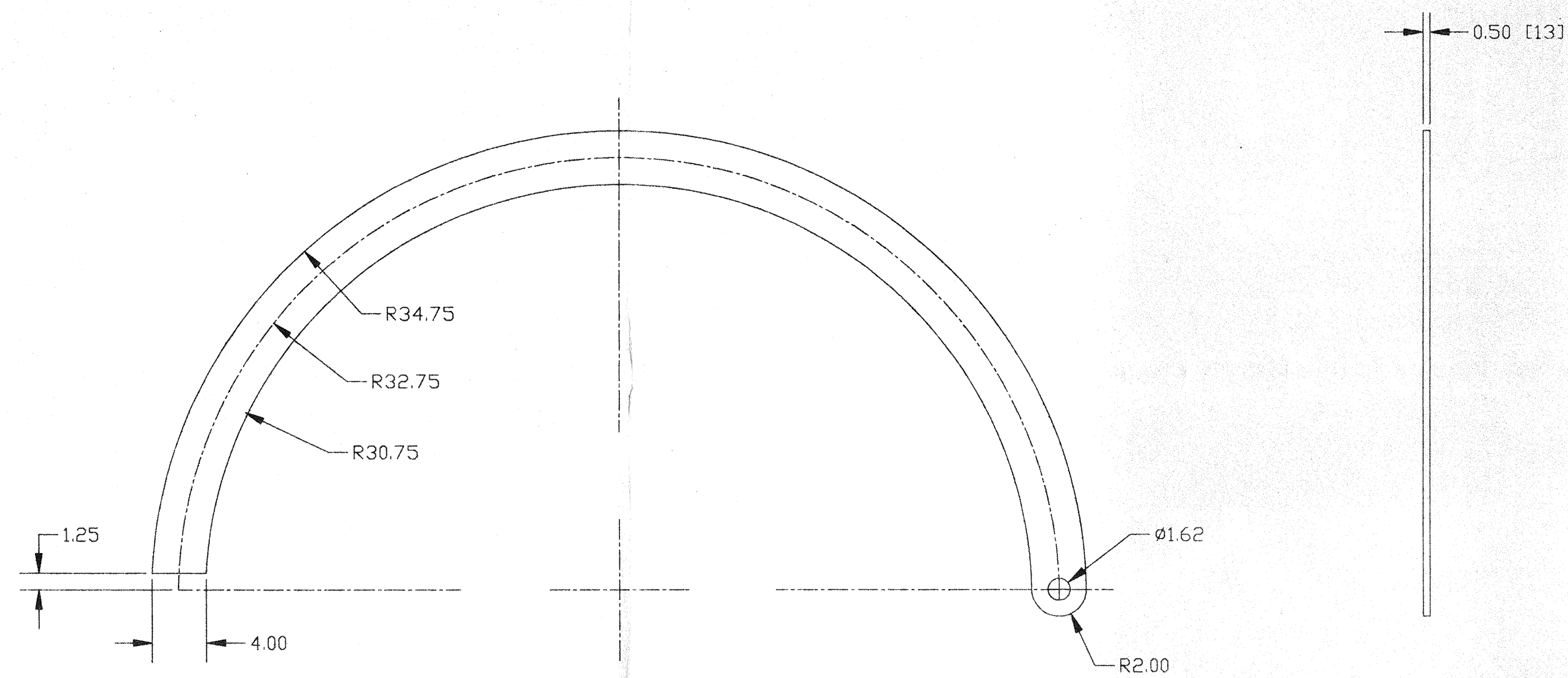
EXTERNAL FIXTURE 61.5 I.D.  
LIGO VACUUM EQUIPMENT

CAD FILE	SIZE	DWG. NO.	REV.
4050S1	D	V049-4-050	P2

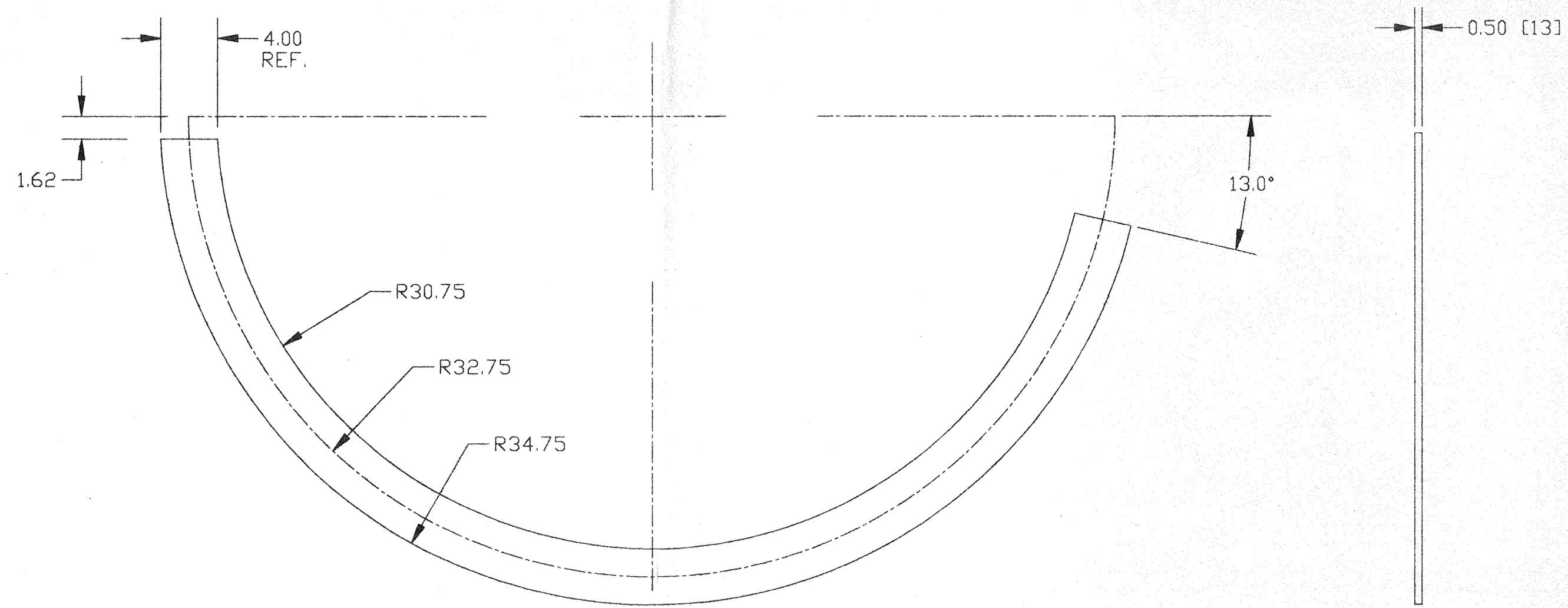
SCALE: AS NOTED SHEET: 1 OF 2

Mar 20, 1996 - 17:59:36

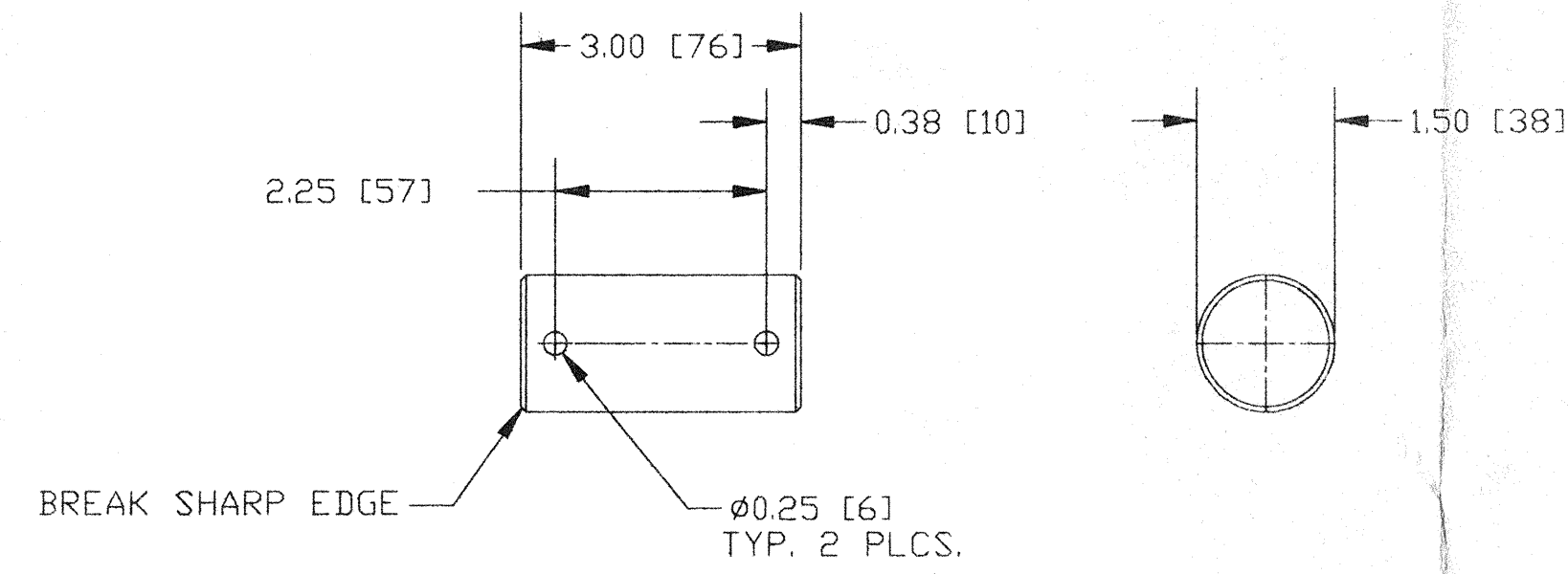




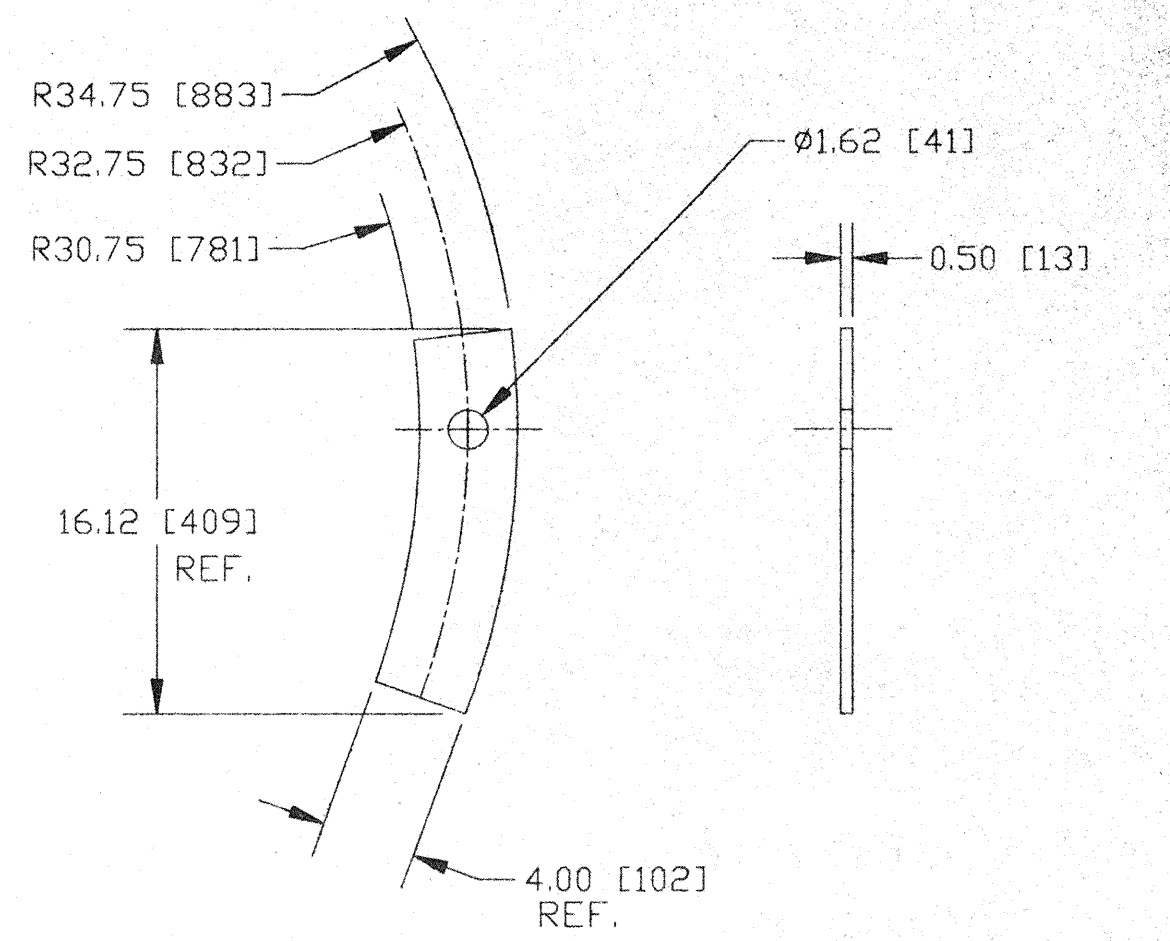
DETAIL OF ITEM 1  
SCALE: 1 1/2"=1'-0"



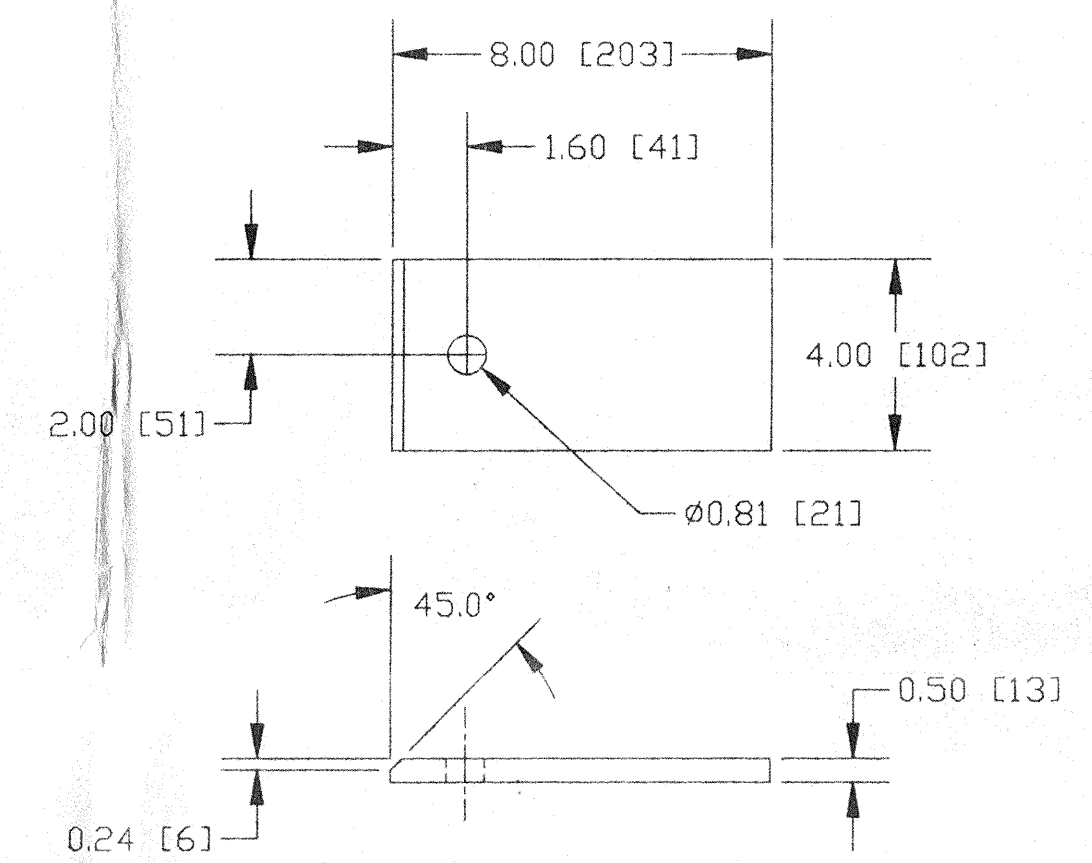
DETAIL OF ITEM 2  
SCALE: 1 1/2"=1'-0"



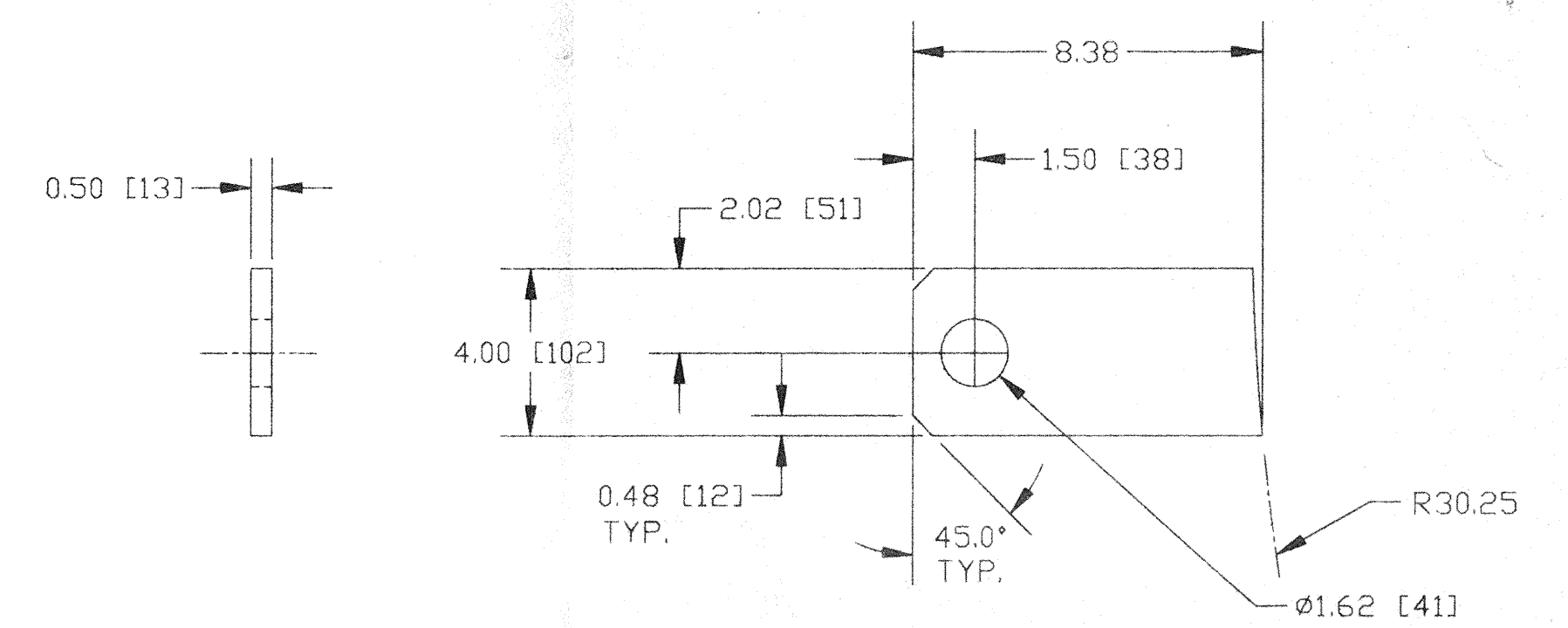
DETAIL OF ITEM 5  
SCALE: HALF



DETAIL OF ITEM 6  
SCALE: 1 1/2"=1'-0"  
2-REQ'D.



DETAIL OF ITEM 8  
SCALE: 3"=1'-0"



DETAIL OF ITEM 3  
SCALE: 3"=1'-0"  
2-REQ'D.

APR 30 1996

D990298-P2-V SEE SHEET 1 FOR REVISIONS

PROCESS SYSTEMS INTERNATIONAL INC.  
20 WALKUP DR. WESTBOROUGH, MASSACHUSETTS 01581 USA

EXTERNAL FIXTURE 61.5 I.D.  
LIGD VACUUM EQUIPMENT

CAD FILE 4050S2	SIZE D	DWG. NO. V049-4-050	REV. P2
SCALE AS NOTED	SHEET 2 OF 2		