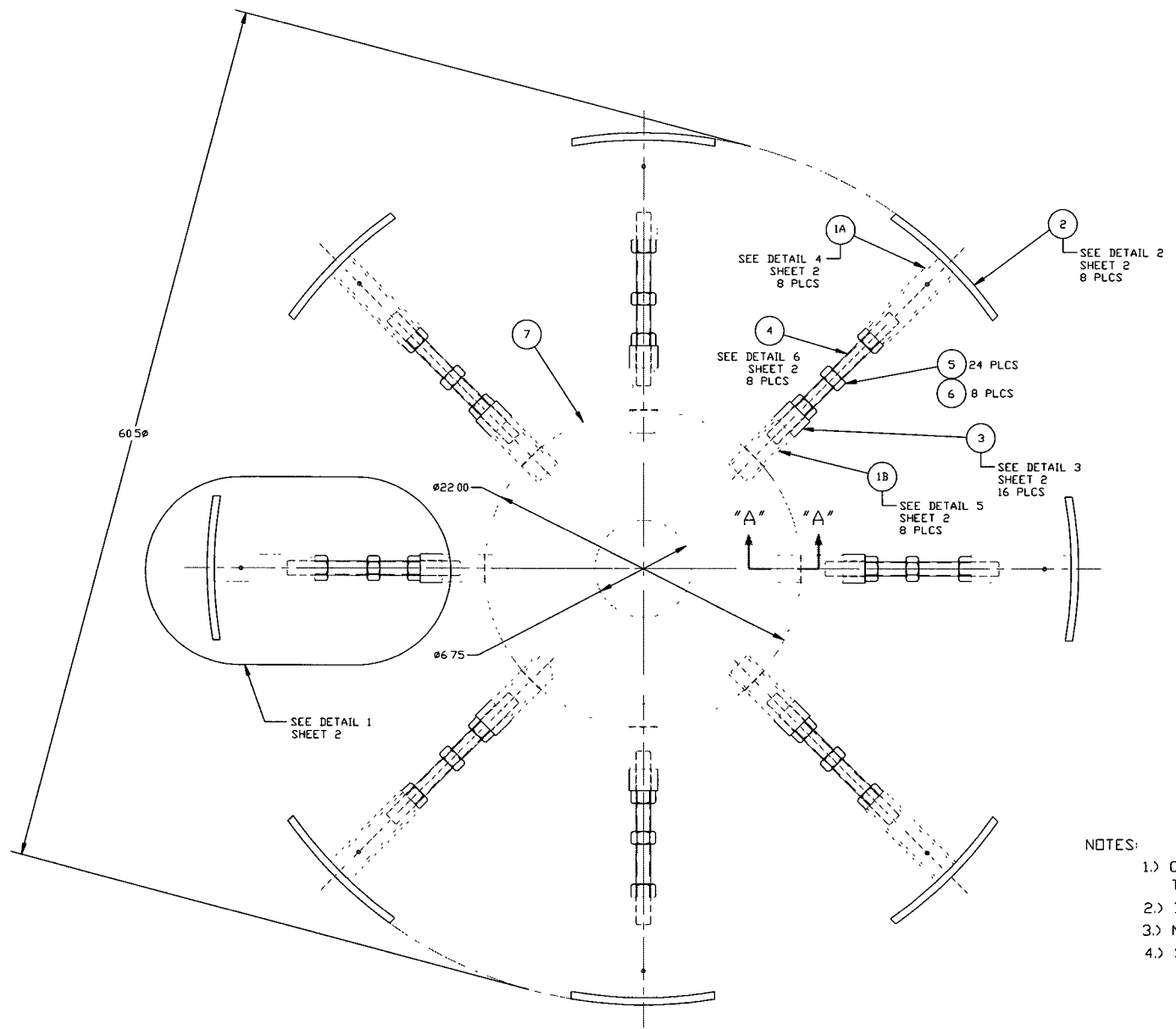
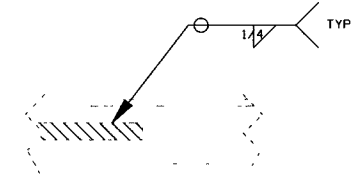


ITEM	PART NUMBER	SUFFIX	QTY	UM	DESCRIPTION
1	C01003-1D		10	FT	PIPE, SCH 80 304 A312 1-1/2"
2	C38790B-06		10	FT	BAR, 1/2" x 6" 304 A479
3	C46793Z		1	FT	ROUND BAR 2" DD 304 A479
4	V049M076		8	FT	ROD, THREADED 1"-8 UNC A193 GR88 NICKLE PLATED
5	C18630B		8	EA	NUT, HEAVY HEX 1"-8 UNC A193 GR88
6	C42960B		8	EA	WASHER, FLAT 1" SST
7	BY VENDOR		1	EA	PLATE, 304 SST 22" DIA X 75 THK



**ELECTRONIC COPY**



NOTES:

- 1.) CLEANING: ASSEMBLY TO BE SCRUBBED WITH NYLON BRUSH AND DETERGENT, THEN RINSED WITH STEM AND DRIED
- 2.) ITEM 2 TO BE CLEANED AND INSPECTED BEFORE EACH INSTALLATION IN A SHELL
- 3.) NO LUBRICANTS ARE ALLOWED ON ANY PARTS, KEEP CLEAN OF ALL HYDROCARBONS
- 4.) SPECIAL CARE IS REQUIRED TO PREVENT CONTAMINATION OF FIXTURE BY COVERING WITH TARPS AND STORING INSIDE WHEN NOT IN USE.

4-REQ'D

LIGO-D990297-P2-V



PROCESS SYSTEMS INTERNATIONAL, INC.  
20 WALKUP DR WESTBOROUGH MASSACHUSETTS 01581 USA

FIXTURE  
605 DD INTERNAL  
LIGO VACUUM EQUIPMENT

CAD FILE 4049S1  
SIZE D  
DWG NO. V049-4-049  
REV P2

SCALE 3" = 1"

SHEET 1 OF 2

NOT COMMERCIAL USE

PROPRIETARY AND CONFIDENTIAL  
THIS DOCUMENT CONTAINS PROPRIETARY INFORMATION BELONGING TO PROCESS SYSTEMS INTERNATIONAL, INC. OR ITS AFFILIATED COMPANIES AND SHALL BE USED ONLY FOR THE PURPOSE FOR WHICH IT WAS SUPPLIED. IT SHALL NOT BE COPIED, REPRODUCED OR OTHERWISE USED, NOR SHALL SUCH INFORMATION BE DISCLOSED IN WHOLE OR IN PART TO ANY OTHER PARTY WITHOUT THE WRITTEN CONSENT OF PROCESS SYSTEMS INTERNATIONAL, INC. AND SHALL BE RETURNED UPON REQUEST.

DWG. NO.	DESCRIPTION	DWG. NO.	DESCRIPTION
	REFERENCE DRAWINGS		

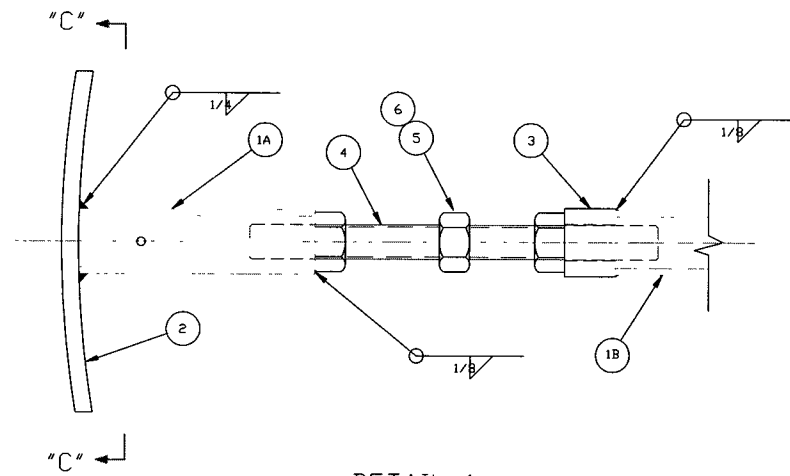
REV	DESCRIPTION	CHKD	DRWN	DATE	DESN
P2	RELEASED FOR FABRICATION		MA	03/26/96	0097
P1	PRELIMINARY DESIGN UPDATE		MAA	3/05/96	

UNLESS OTHERWISE SPECIFIED DIMENSIONS ARE IN INCHES  
TOLERANCES:  
FRACTIONS: ±  
ANGULAR APPROX: ±0.25° BOMB ±0.2°  
THREE PLACE DECIMAL: ±0.005  
FINISHED SURFACE: FINISH  
BREAK CORNERS BY REMOVE ALL SHARP

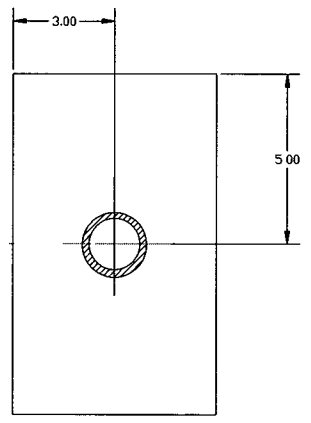
DO NOT SCALE THIS DRAWING

USED ON: NEXT ASS'Y

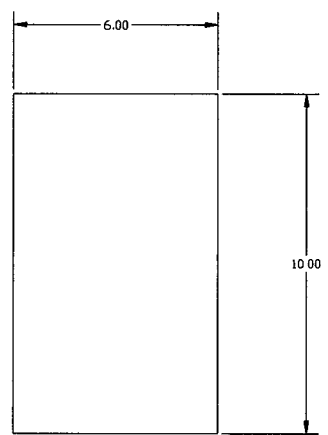
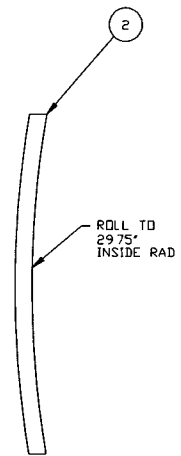
ISSUE DESCRIPTION	SCALE	SHEET
	3" = 1"	1 OF 2



**DETAIL 1**  
8 PLCS

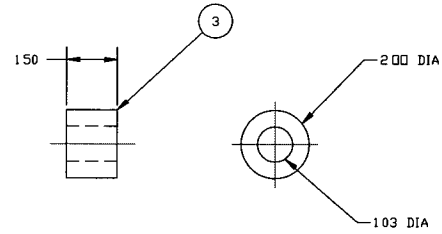


**SECTION "C"- "C"**

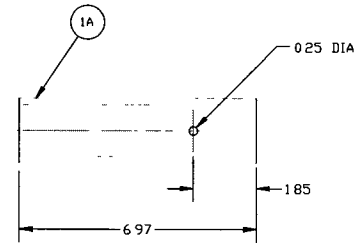


**DETAIL 2**  
QTY 8

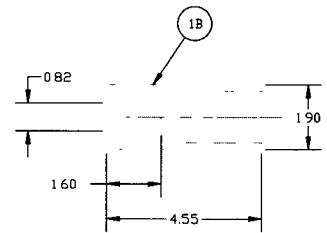
**ELECTRONIC COPY**



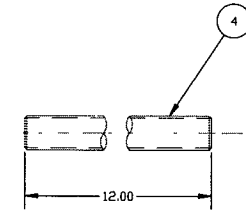
**DETAIL 3**  
QTY 8  
SCALE HALF



**DETAIL 4**  
QTY 8



**DETAIL 5**  
QTY: 8



**DETAIL 6**  
QTY 8

SEE SHEET 1 FOR REVISIONS

<b>PROCESS SYSTEMS INTERNATIONAL INC.</b> <small>20 WALKUP DR WESTBOROUGH MASSACHUSETTS 01581 USA</small>			
<b>FIXTURE</b> <b>60.5" O.D INTERNAL</b> <b>LIGO VACUUM EQUIPMENT</b>			
CAD FILE 4049S2	SIZE D	FIG. NO. V049-4-049	REV P2
SCALE HALF	SHEET 2 OF 2		

EDUCATION VERSION - NOT FOR COMMERCIAL USE