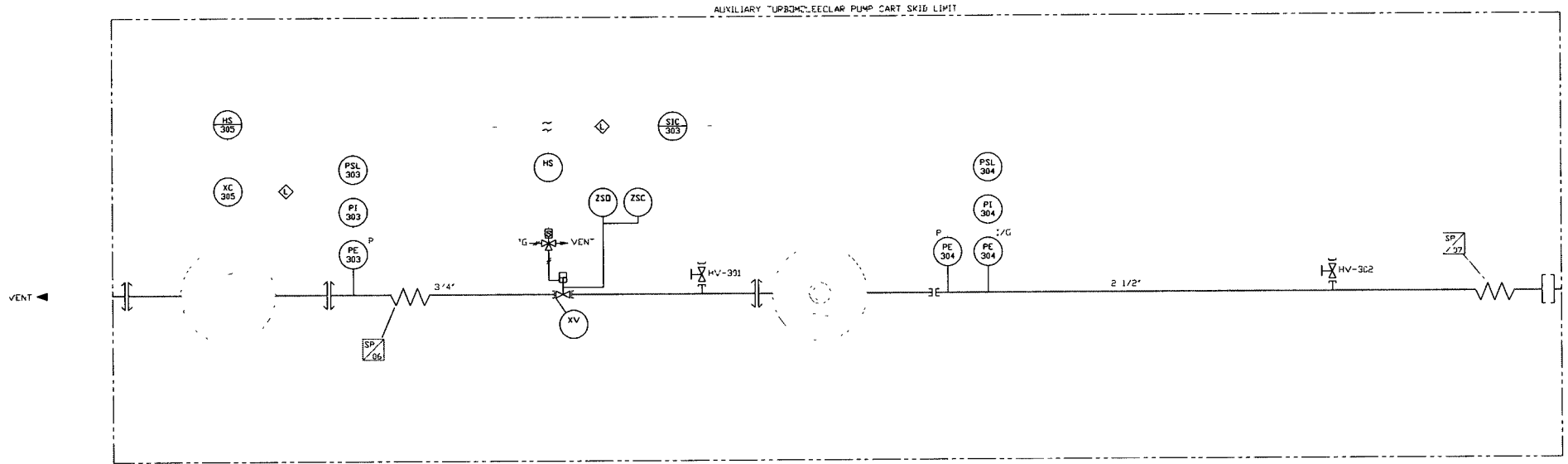
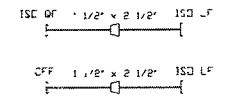


FOR CONSTRUCTION USE



ADAPTERS - 10 OF EACH REQUIRED ( PER CART)



**ELECTRONIC COPY**

LIGO-D990286-P1-V

PROPRIETARY AND CONFIDENTIAL  
 THIS DOCUMENT CONTAINS PROPRIETARY INFORMATION BELONGING TO PROCESS SYSTEMS INTERNATIONAL, INC. OR ITS RELATED COMPANIES AND SHALL BE USED ONLY FOR THE PURPOSE FOR WHICH IT WAS SUPPLIED. IT SHALL NOT BE COPIED, REPRODUCED OR OTHERWISE DISSEMINATED IN WHOLE OR IN PART TO ANY OTHER PARTY WITHOUT THE WRITTEN CONSENT OF PROCESS SYSTEMS INTERNATIONAL, INC. AND SHALL BE RETURNED UPON REQUEST.

DWG NO.	DESCRIPTION	DWG NO.	DESCRIPTION
	REFERENCE DRAWINGS		

REV	DESCRIPTION	CHKD	DRWN	DATE	DESN
PI	PRELIMINARY DESIGN UPDATE			09/26/95	0903

**PROCESS SYSTEMS INTERNATIONAL, INC.**  
 20 WALDEN DR. WESTBOROUGH, MASSACHUSETTS 01581 USA  
 PIPING & INSTRUMENTATION DIAGRAM  
 LIGO VACUUM EQUIPMENT  
 AUXILIARY TURBOMOLECULAR PUMP CART  
 DWG NO. V049-0-042  
 SHEET 1 OF 1

11/16/95 11:42:31