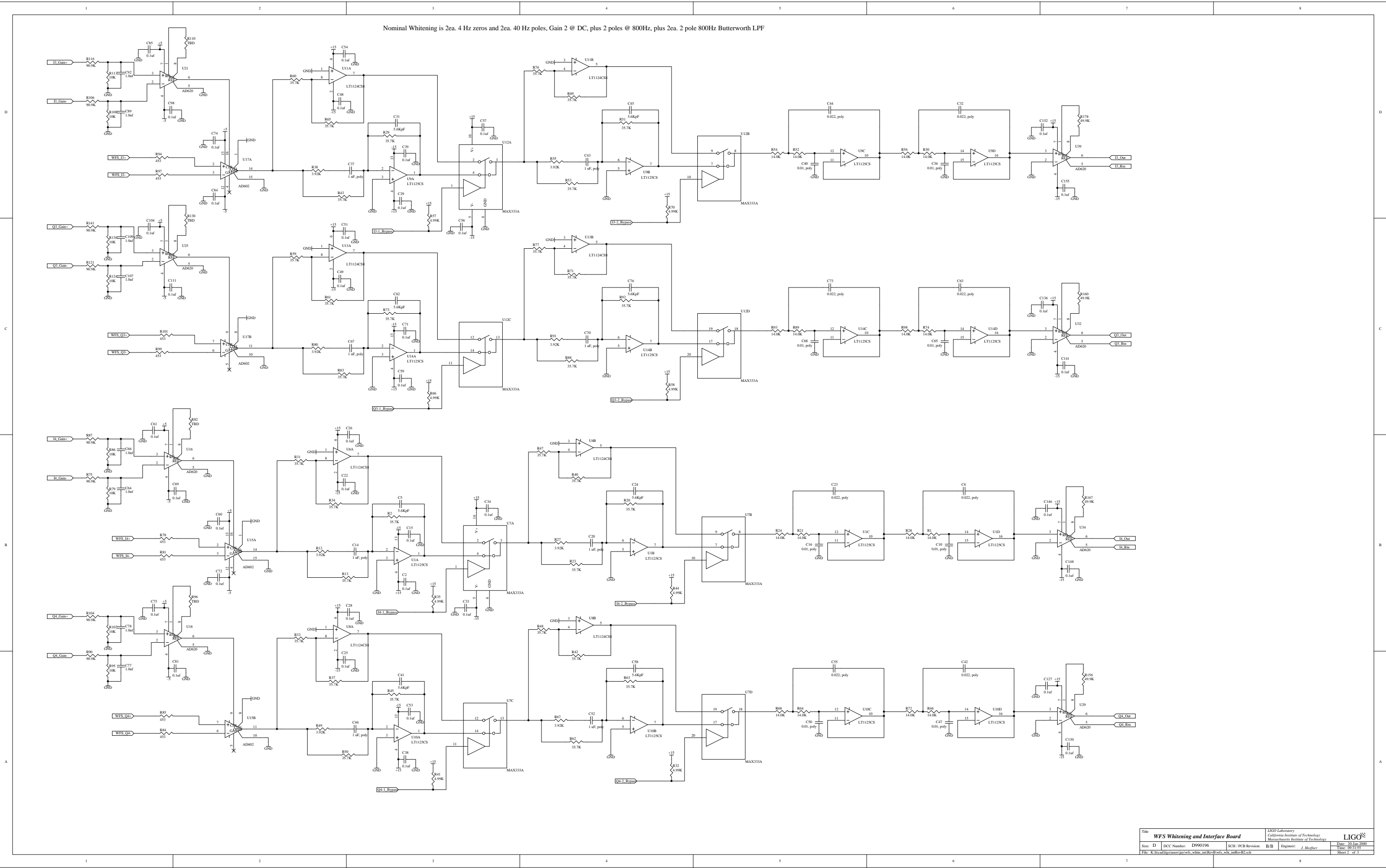
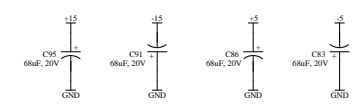
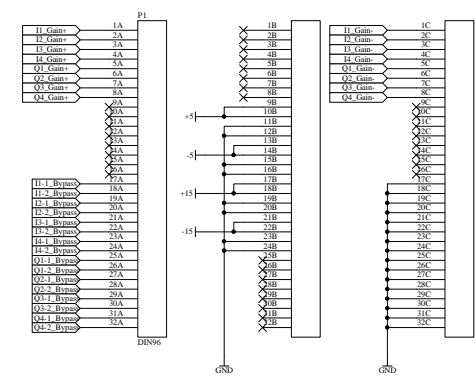
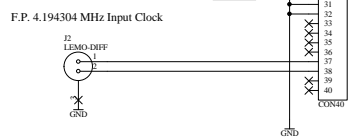
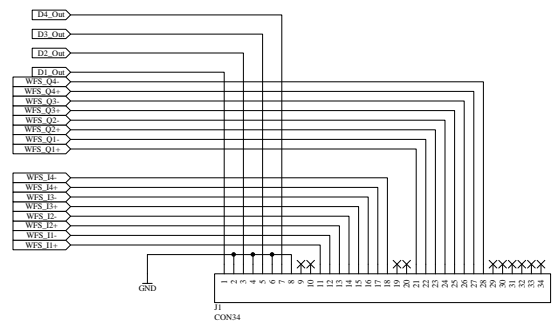


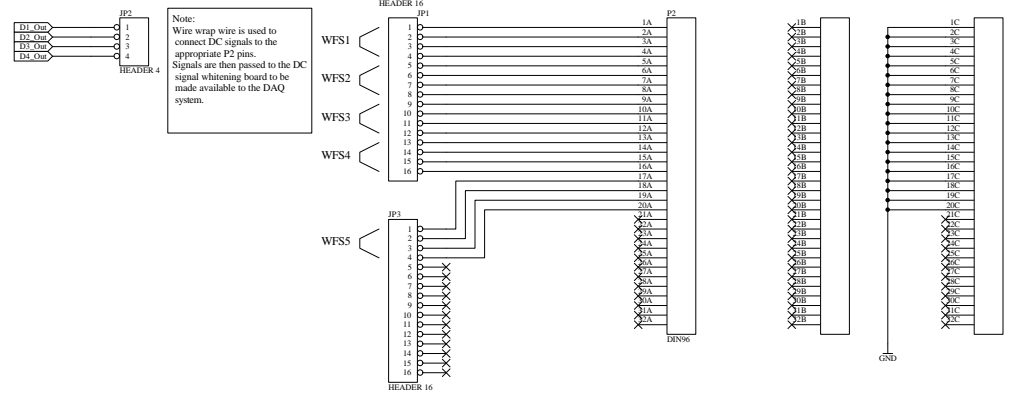
Nominal Whiting is 2ea. 4 Hz zeros and 2ea. 40 Hz poles, Gain 2 @ DC, plus 2 poles @ 800Hz, plus 2ea. 2 pole 800Hz Butterworth LPF



| Revision | Description | Date |
|----------|--|------|
| A | Initial Release | 5/99 |
| B | 1. Added LT1124 op amps in bypass paths to keep signal polarity constant regardless of mode. 2. Added AD620 diff amps to present a true difference input to the gain adjust inputs. | 1/00 |



Daisy-Chained Connection to Other Modules



1

2

3

4

5

6

wfs_wht_intRevB1
wfs_wht_intRevB1.sch

- WFS_I1+
- I1-1_Bypass
- I1-2_Bypass
- I1_Out
- I1_Rtn
- WFS_I1-
- I1_Gain+
- I1_Gain-
- WFS_Q1+
- Q1-1_Bypass
- Q1-2_Bypass
- Q1_Out
- Q1_Rtn
- WFS_Q1-
- Q1_Gain+
- Q1_Gain-
- WFS_I2+
- I2-1_Bypass
- I2-2_Bypass
- I2_Out
- I2_Rtn
- WFS_I2-
- I2_Gain+
- I2_Gain-
- WFS_Q2+
- Q2-1_Bypass
- Q2-2_Bypass
- Q2_Out
- Q2_Rtn
- WFS_Q2-
- Q2_Gain+
- Q2_Gain-

wfs_wht_intRevB2
wfs_wht_intRevB2.sch

- WFS_I3+
- I3-1_Bypass
- I3-2_Bypass
- I3_Out
- I3_Rtn
- WFS_I3-
- I3_Gain+
- I3_Gain-
- WFS_Q3+
- Q3-1_Bypass
- Q3-2_Bypass
- Q3_Out
- Q3_Rtn
- WFS_Q3-
- Q3_Gain+
- Q3_Gain-
- WFS_I4+
- I4-1_Bypass
- I4-2_Bypass
- I4_Out
- I4_Rtn
- WFS_I4-
- I4_Gain+
- I4_Gain-
- WFS_Q4+
- Q4-1_Bypass
- Q4-2_Bypass
- Q4_Out
- Q4_Rtn
- WFS_Q4-
- Q4_Gain+
- Q4_Gain-

wfs_wht_intRevB3
wfs_wht_intRevB3.sch

- WFS_I1+
- WFS_I2+
- WFS_I3+
- WFS_I4+
- D1_Out
- D2_Out
- D3_Out
- D4_Out
- WFS_I1-
- WFS_I2-
- WFS_I3-
- WFS_I4-
- WFS_Q1+
- WFS_Q2+
- WFS_Q3+
- WFS_Q4+
- WFS_Q1-
- WFS_Q2-
- WFS_Q3-
- WFS_Q4-
- I1_Gain+
- I1_Gain-
- I2_Gain+
- I2_Gain-
- I3_Gain+
- I3_Gain-
- I4_Gain+
- I4_Gain-
- Q1_Gain+
- Q1_Gain-
- Q2_Gain+
- Q2_Gain-
- Q3_Gain+
- Q3_Gain-
- Q4_Gain+
- Q4_Gain-
- D1_Out
- D2_Out
- D3_Out
- D4_Out
- I1_Out
- I1_Rtn
- I2_Out
- I2_Rtn
- I3_Out
- I3_Rtn
- I4_Out
- I4_Rtn
- Q1_Out
- Q1_Rtn
- Q2_Out
- Q2_Rtn
- Q3_Out
- Q3_Rtn
- Q4_Out
- Q4_Rtn
- I1-1_Bypass
- I1-2_Bypass
- I2-1_Bypass
- I2-2_Bypass
- I3-1_Bypass
- I3-2_Bypass
- I4-1_Bypass
- I4-2_Bypass
- Q1-1_Bypass
- Q1-2_Bypass
- Q2-1_Bypass
- Q2-2_Bypass
- Q3-1_Bypass
- Q3-2_Bypass
- Q4-1_Bypass
- Q4-2_Bypass

D

D

C

C

B

B

A

A

| | | | | | | | |
|---|---------------------|--|----------------------|--|--|----------------|--|
| Title | | WFS Whitening and Interface Board | | LIGO Laboratory California Institute of Technology Massachusetts Institute of Technology | | LIGO | |
| Size: B | DCC Number: D990196 | SCH / PCB Revision: B/B | Engineer: J. Heefner | Date: 20-Jan-2000 | | Time: 09:31:29 | |
| File: K:\hcad\ligo\users\jay\wfs_white_int\RevB\wfs_wht_intRevB.prj | | | | Sheet 0 of 3 | | | |

1

2

3

4

5

6