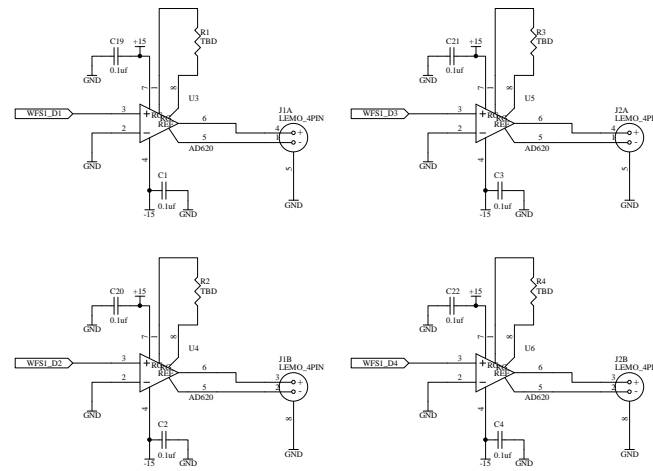
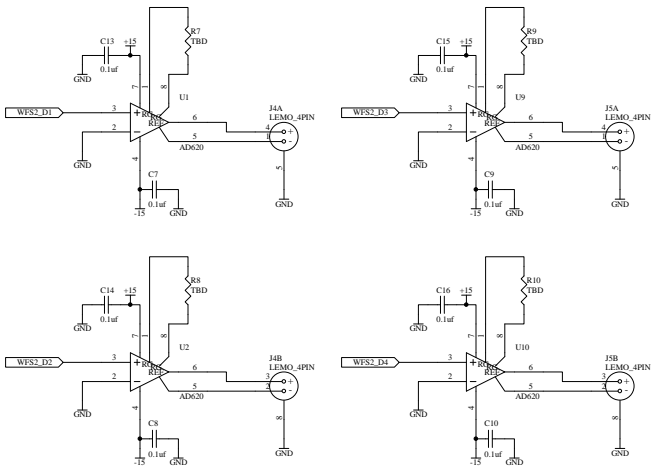


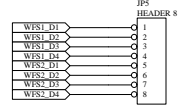
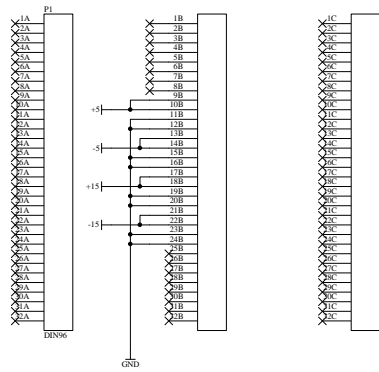
WFS 1 Segment DC DAQ Monitors



WFS 2 Segment DC DAQ Monitors



2 zeros @ 4 Hz, 2 poles @ 40 Hz, 2 Poles @ 825 Hz



Note:
Wire wrap wire is used to connect DC signals to the appropriate P2 pins. Signals are then passed to the DC signal whitening board to be made available to the DAQ system.

